

*Improving
mobility*

*Easing
congestion*

*Strengthening
our communities*

Central Corridor Light Rail Transit

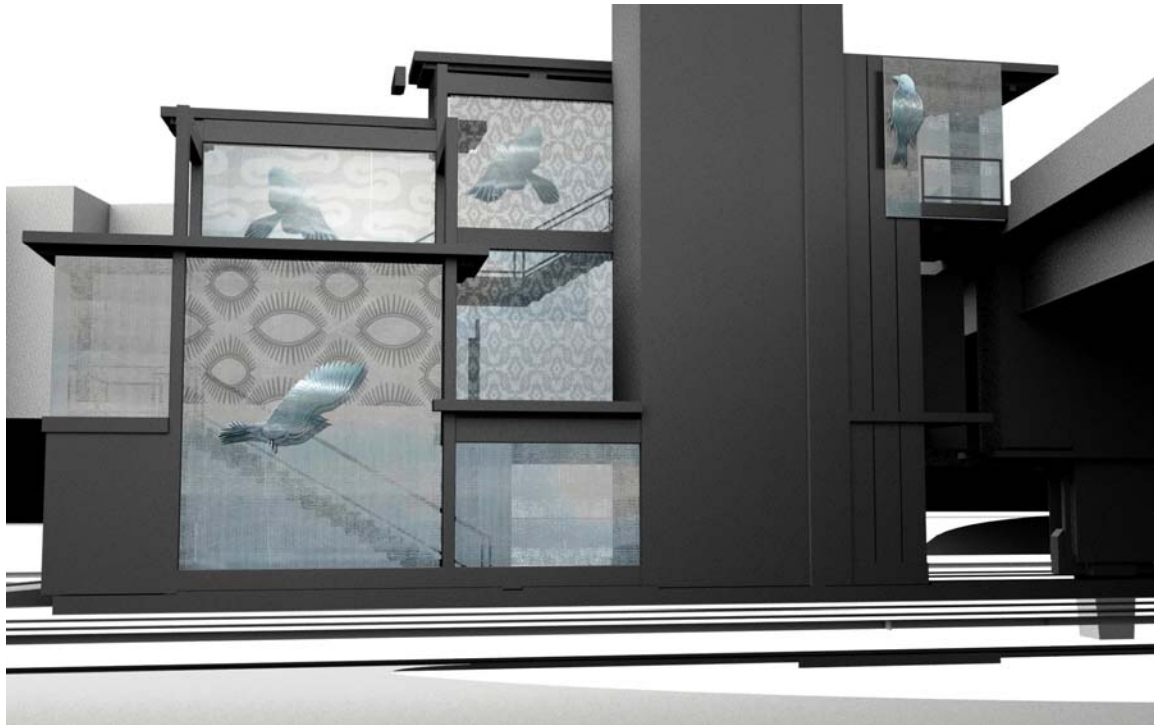
West Bank Station

Artist Nancy Blum developed this design for the West Bank LRT Station based on public input received at the station art visioning session held in March, feedback received at the June public meeting and on research and interviews:

- Design of bird sanctuary, a metaphor representing immigrant groups, students, employees, many cultures and the relationship with the Mississippi River
- Large steel birds in many positions (landing, languishing, in flight) installed on the two stairwells providing vertical circulation from both Cedar and 19th avenues to the station
- The material of the stairwell will be etched to represent different cultural fabrics
- Artist Nancy Blum is working with Scott Lanyon (head of the Department of Ecology, Evolution and Behavior at the University of Minnesota) to identify the bird positions and species native to Minnesota



Migratory birds and cultural themed etching on Cedar and 19th stairwells



Migratory birds and cultural themed etching on Cedar and 19th stairwells

About the project: The Central Corridor Light Rail Transit Project will link downtown St. Paul and downtown Minneapolis along Washington and University avenues via the State Capitol and the University of Minnesota. Construction would begin in 2010 on the planned 11-mile Central Corridor line, with service beginning in 2014. The line would connect with the Hiawatha LRT line at the Metrodome station in Minneapolis and the Northstar commuter rail line, which will begin operation in late 2009, at the new Minneapolis Multimodal Station. The Metropolitan Council will be the grantee of federal funds. The regional government agency is charged with building the line in partnership with the Minnesota Department of Transportation. The Central Corridor Management Committee, which includes the mayors of St. Paul and Minneapolis, the University of Minnesota and commissioners from Ramsey and Hennepin counties, provides advice and oversight. The Central Corridor LRT Project Website is www.centralcorridor.org