

Improving
mobility

Easing
congestion

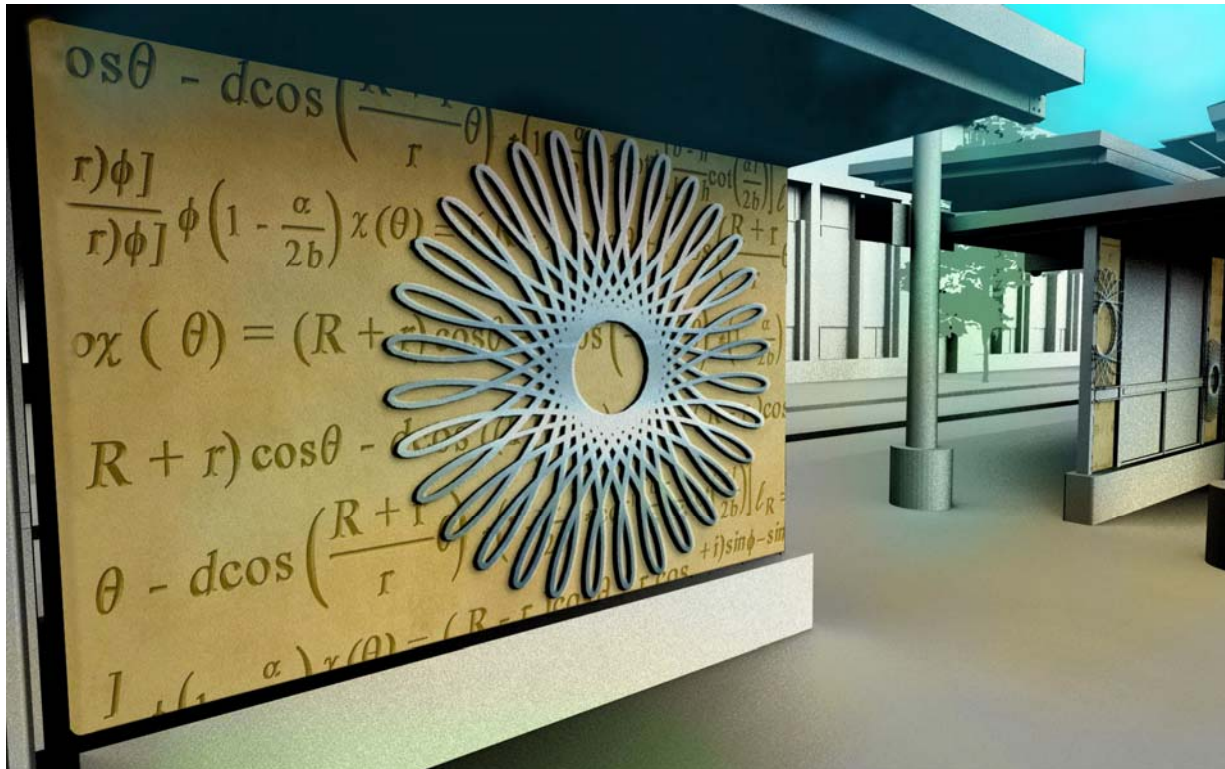
Strengthening
our communities

Central Corridor Light Rail Transit

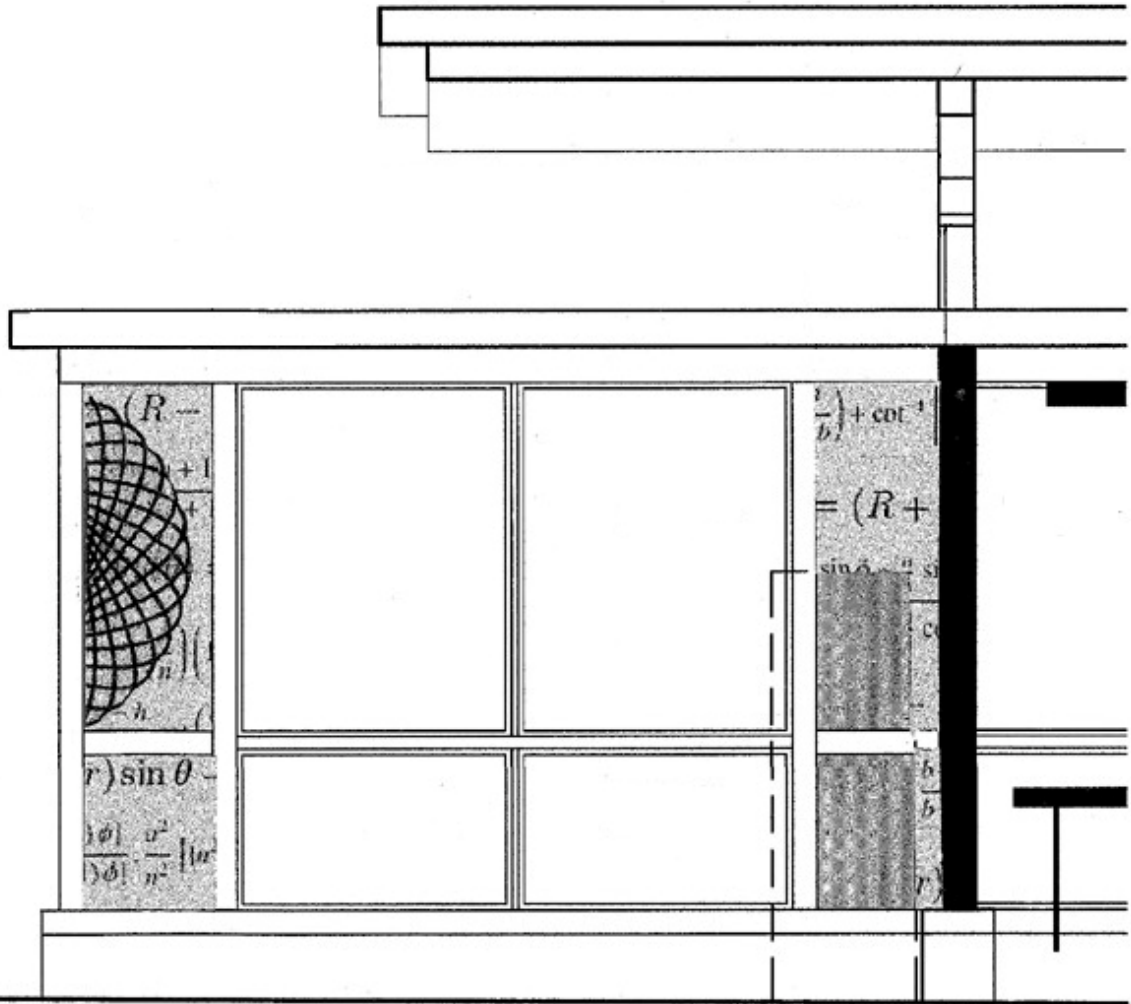
East Bank Station

Artist Nancy Blum developed this design for the East Bank LRT Station based on public input received at the station art visioning session held in March, feedback received at the June public meeting and on research and interviews:

- Design focused on mathematics and science
- Large-scale spirographs cut out of thick stainless steel will be mounted on large precast architectural panels that will have formed mathematical equations that correspond to the spirograph
- The precast panels and stainless steel spirographs will be visible from both sides of the center platform station



Large panels featuring spirographs and mathematical equations



Large panels featuring spirographs and mathematical equations

About the project: The Central Corridor Light Rail Transit Project will link downtown St. Paul and downtown Minneapolis along Washington and University avenues via the State Capitol and the University of Minnesota. Construction would begin in 2010 on the planned 11-mile Central Corridor line, with service beginning in 2014. The line would connect with the Hiawatha LRT line at the Metrodome station in Minneapolis and the Northstar commuter rail line, which will begin operation in late 2009, at the new Minneapolis Multimodal Station. The Metropolitan Council will be the grantee of federal funds. The regional government agency is charged with building the line in partnership with the Minnesota Department of Transportation. The Central Corridor Management Committee, which includes the mayors of St. Paul and Minneapolis, the University of Minnesota and commissioners from Ramsey and Hennepin counties, provides advice and oversight. The Central Corridor LRT Project Website is www.centralcorridor.org.