

*Improving  
mobility*

*Easing  
congestion*

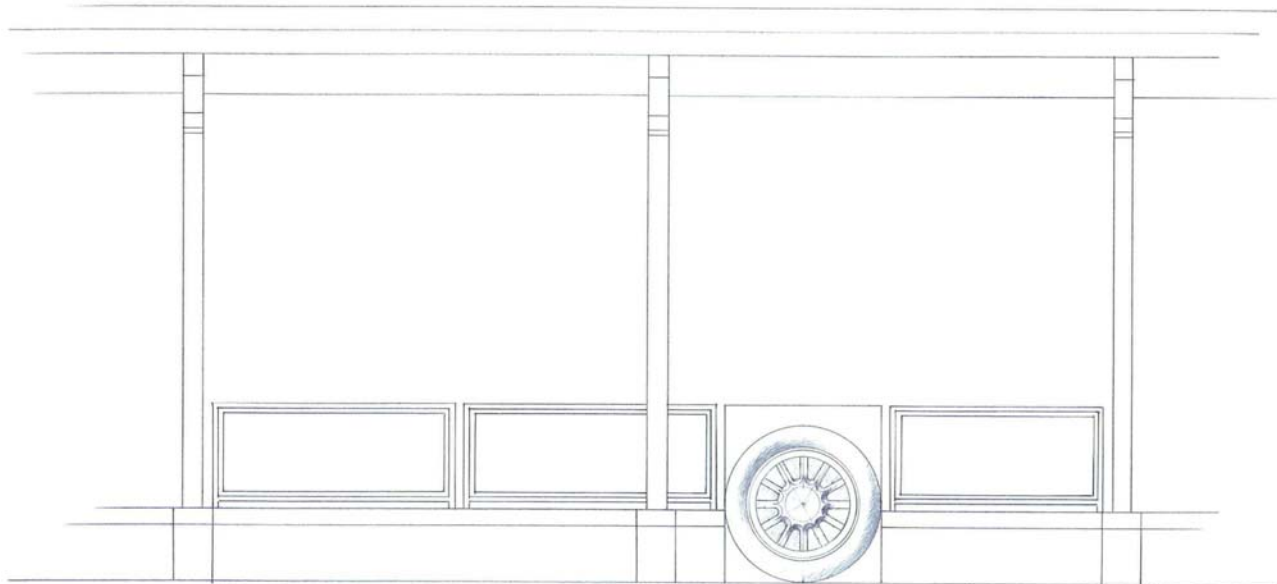
*Strengthening  
our communities*

# Central Corridor Light Rail Transit

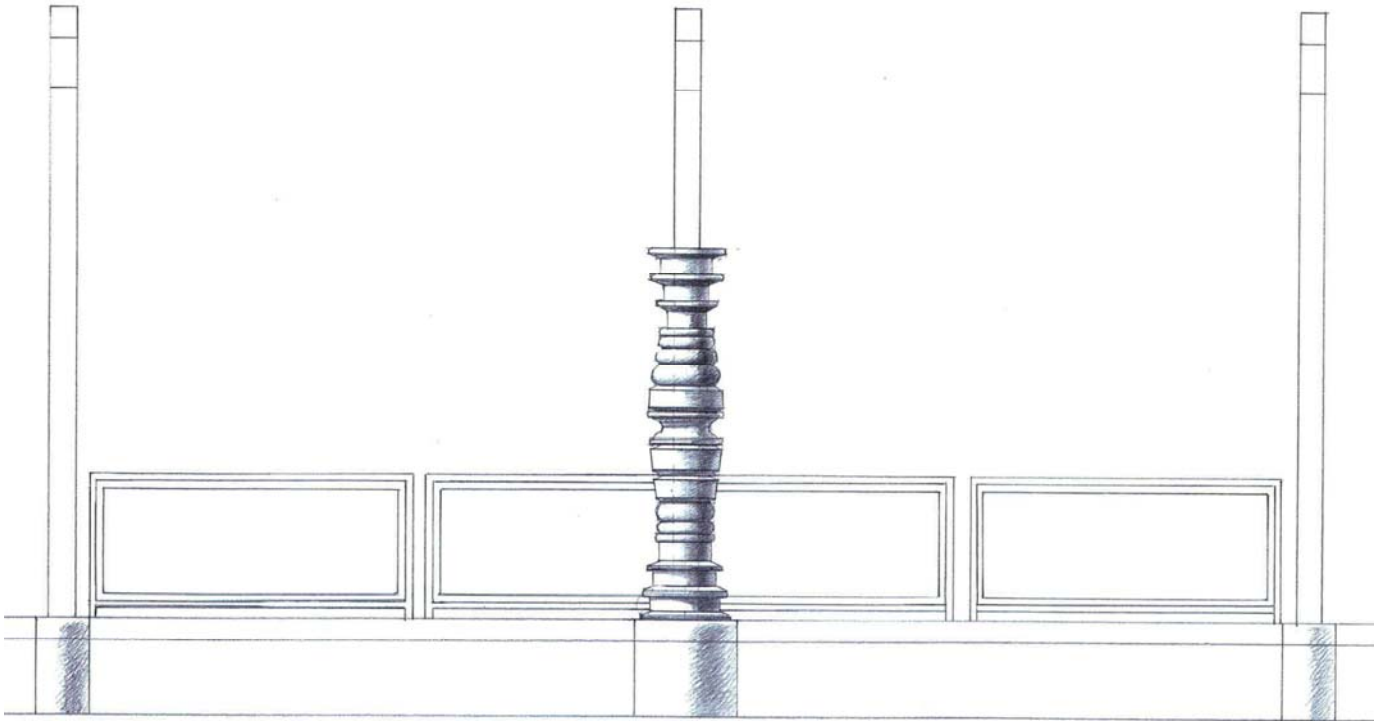
## Westgate Station

Artists Andrea Myklebust and Stanton Sears developed this design for the Westgate LRT Station based on public input received at the station art visioning session held in March, feedback received at the June public meeting and on research and interviews:

- A unique black granite wheel sculpture in a transportation theme located in the center of each station platform (side platform station)
- Carved granite lettering in the paving of each platform denoting “St. Paul” with a directional arrow in one platform and “Minneapolis” with a directional arrow in the other platform
- One bronze sculpture inspired by stacks of different wheels will be placed on a light column on each platform
- A brick and concrete palette complementing the artwork



Black granite tractor wheel



Bronze stack of wheels

**About the project:** The Central Corridor Light Rail Transit Project will link downtown St. Paul and downtown Minneapolis along Washington and University avenues via the State Capitol and the University of Minnesota. Construction would begin in 2010 on the planned 11-mile Central Corridor line, with service beginning in 2014. The line would connect with the Hiawatha LRT line at the Metrodome station in Minneapolis and the Northstar commuter rail line, which will begin operation in late 2009, at the new Minneapolis Multimodal Station. The Metropolitan Council will be the grantee of federal funds. The regional government agency is charged with building the line in partnership with the Minnesota Department of Transportation. The Central Corridor Management Committee, which includes the mayors of St. Paul and Minneapolis, the University of Minnesota and commissioners from Ramsey and Hennepin counties, provides advice and oversight. The Central Corridor LRT Project Website is [www.centralcorridor.org](http://www.centralcorridor.org).