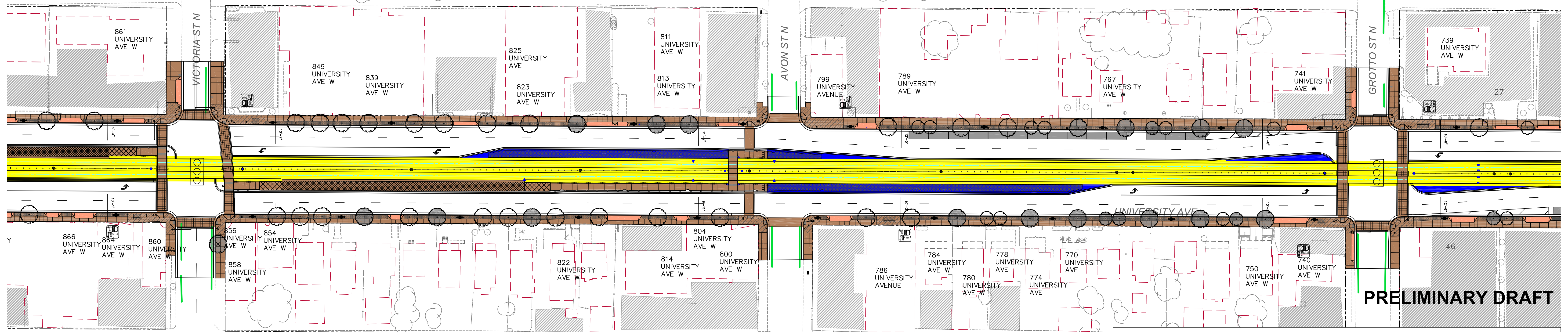


**ON-STREET PARKING (VICTORIA TO AVON-NORTH)**  
 EXISTING: 14 SPACES  
 PROPOSED: 0 SPACES

**ON-STREET PARKING (AVON TO GROTTO-NORTH)**  
 EXISTING: 20 SPACES  
 PROPOSED: 14 SPACES

**EXISTING CROSS STREET PARKING**  
 VICTORIA ST N (NORTH): 5 SPACES

**EXISTING CROSS STREET PARKING**  
 AVON ST N (NORTH): 8 SPACES



**EXISTING CROSS STREET PARKING**  
 VICTORIA ST N (SOUTH): 11 SPACES

**EXISTING CROSS STREET PARKING**  
 AVON ST N (SOUTH): 10 SPACES

**ON-STREET PARKING (VICTORIA TO AVON-SOUTH)**  
 EXISTING: 13 SPACES  
 PROPOSED: 0 SPACES

**ON-STREET PARKING (AVON TO GROTTO-SOUTH)**  
 EXISTING: 20 SPACES  
 PROPOSED: 0 SPACES

**PRELIMINARY DRAFT**

**LEGEND**

	EXISTING CROSS-STREET ON-STREET PARKING AREAS		EXISTING SURFACE PARKING LOT		GREEN SPACE OPPORTUNITY
	PROPOSED ON-STREET PARKING		BUS STOP		LRT TRACK AREA
	SIGNALIZED INTERSECTION		PROPOSED ACCESS CLOSURE		PEDESTRIAN AREAS
	TRACK DEVICES		DRIVEWAY		MEDIAN AREAS
	STREET LIGHTS		TREE		

**NOTES:**

- EXISTING CONDITIONS BASED ON GIS OR FIELD SURVEY DATA & VARIES BY SHEET (SURVEY IN PROGRESS). EXISTING ON-STREET PARKING AND EXISTING SURFACE PARKING LOT BASED ON OCT/NOV 2007 FIELD DATA & AERIAL PHOTOGRAPHY.
- EXISTING CROSS-STREET PARKING BASED ON FEB. 2008 FIELD DATA. EXISTING & PROPOSED PARKING COUNTS BASED ON A 22' SPACE LENGTH.