

Community Outreach Coordinators Central Corridor LRT



Mission: The purpose of the outreach team is to be an intermediary for the Metropolitan Council and the community on the Central Corridor LRT project. We will do this by building relationships with the public by informing, listening, and gathering feedback throughout engineering, construction and operation.

Minneapolis- Downtown to Emerald
New Stations: West Bank, East Bank, Stadium Village, Prospect Park



Jessica Hill
Minneapolis - Lead

(651) 602-1840
jessica.hill@metc.state.mn.us

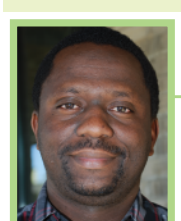
St. Paul West- Emerald to Hamline
Stations: Westgate, Raymond Ave, Fairview Ave, Snelling Ave



Rita Rodriguez
St. Paul West - Lead

(651) 602-1805
rita.rodriguez@metc.state.mn.us

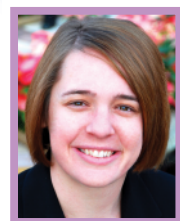
St. Paul East- Hamline to I94
Stations: Hamline Ave, Lexington Pkwy, Victoria St, Dale St, Western Ave, Capitol/Rice, Robert St



Nkongo Cigolo
St. Paul East - Lead

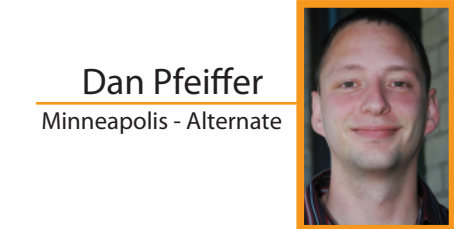
(651) 602-1559
nkongo.cigolo@metc.state.mn.us

Downtown St. Paul- I94 to Lowertown
Stations: 10th St, Central, Union Depot



Dana Happel
Downtown St. Paul - Lead

(651) 602-1954
dana.happel@metc.state.mn.us



Dan Pfeiffer
Minneapolis - Alternate

(651) 602-1952
daniel.pfeiffer@metc.state.mn.us



Abdi Raqib
St. Paul East - Intern

(651) 602-1908
abdi.raqib@metc.state.mn.us



Michelle Webb
St. Paul East - Intern

(651) 602-1485
michelle.webb@metc.state.mn.us



Laura Callaghan
Downtown St. Paul - Intern

(651) 602-1853
laura.callaghan@metc.state.mn.us