

Central Corridor Light Rail Transit

Central Corridor Management
Committee

May 13, 2009



*Improving
mobility*

*Easing
congestion*

*Strengthening
our communities*

Today's Agenda



- CAC/BAC Reports
- WTS Rosa Parks Diversity Leadership Award presentation
- 4th Street areaways
- Station design update & public art
- Cash flow update
- New Starts report
- Washington Ave. Pedestrian Bridge update
- Lafayette Bridge update

Central Corridor Light Rail Transit



CAC Report

CAC Report

April 16, 2009 Meeting



- Presented Parking Solutions Team report
- CAC members provided feedback
 - Promote transit use
 - Address safety of alley parking
 - Include District Councils in critical area workshops
 - Consider impacts to residential neighborhoods

Central Corridor Light Rail Transit



BAC Report

Karri Plowman, CCP



Rosa Parks Diversity Leadership Award Presentation

Mary Gute
WTS Immediate Past President
Minnesota Chapter



Central Corridor Light Rail Transit



4th Street Areaways

Dan Soler, CCPO Engineer

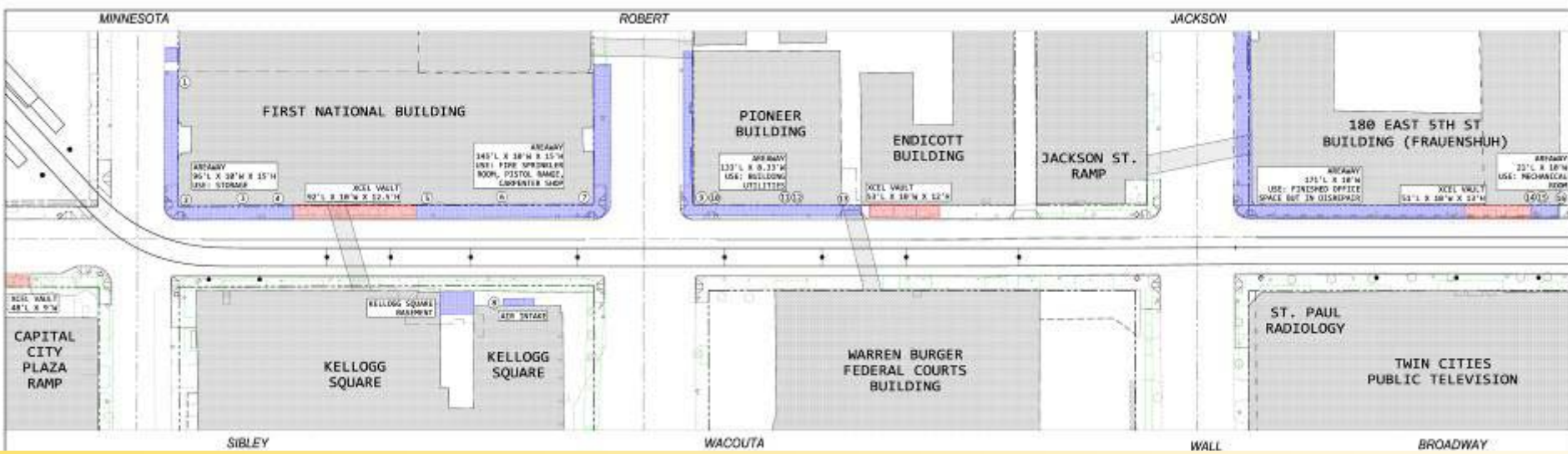
Areaways



- Working with property owners of known areaways in downtown St. Paul
 - Cedar Street
 - 4th Street
- Researching areaways on University and Washington Avenues
- Working with utilities to identify utility vaults

Central Corridor Light Rail Transit

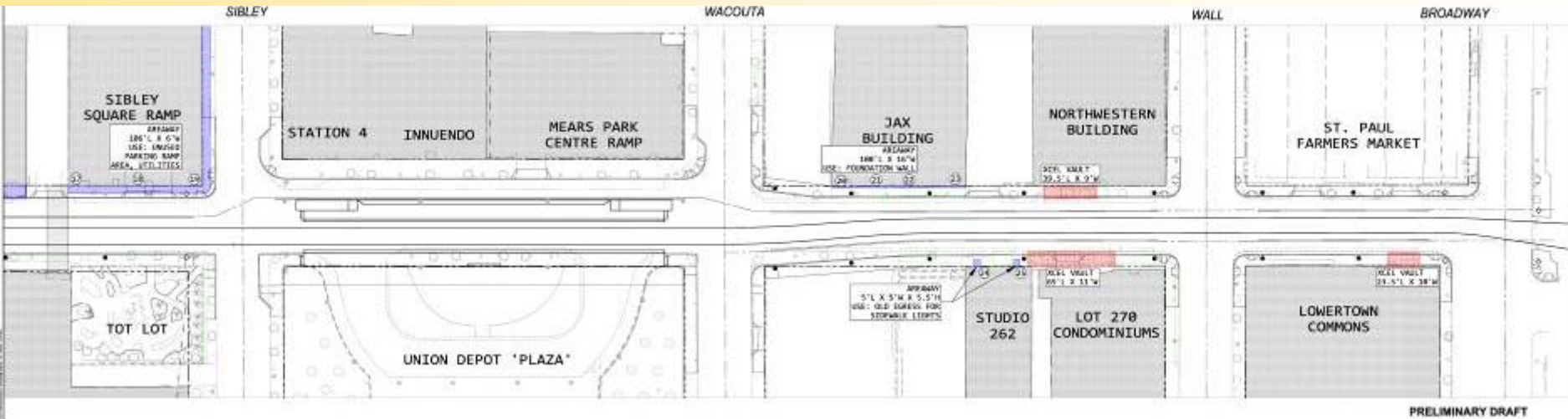
4th Street Areaways Minnesota to Jackson



- Building Areaways
- Xcel Utility Vault

Central Corridor Light Rail Transit

4th Street Areaways Jackson to Broadway

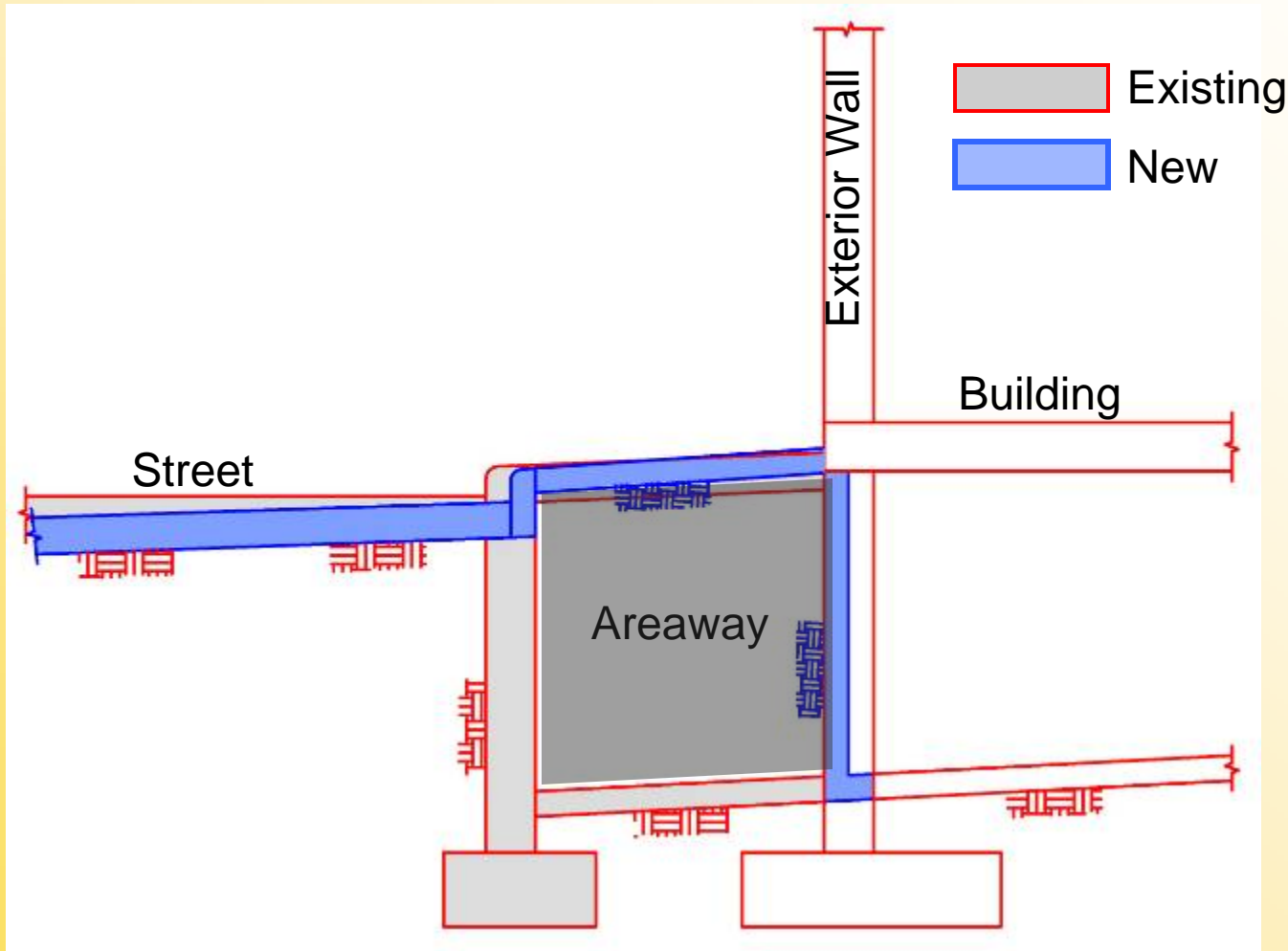


- Building Areaways
- Xcel Utility Vault

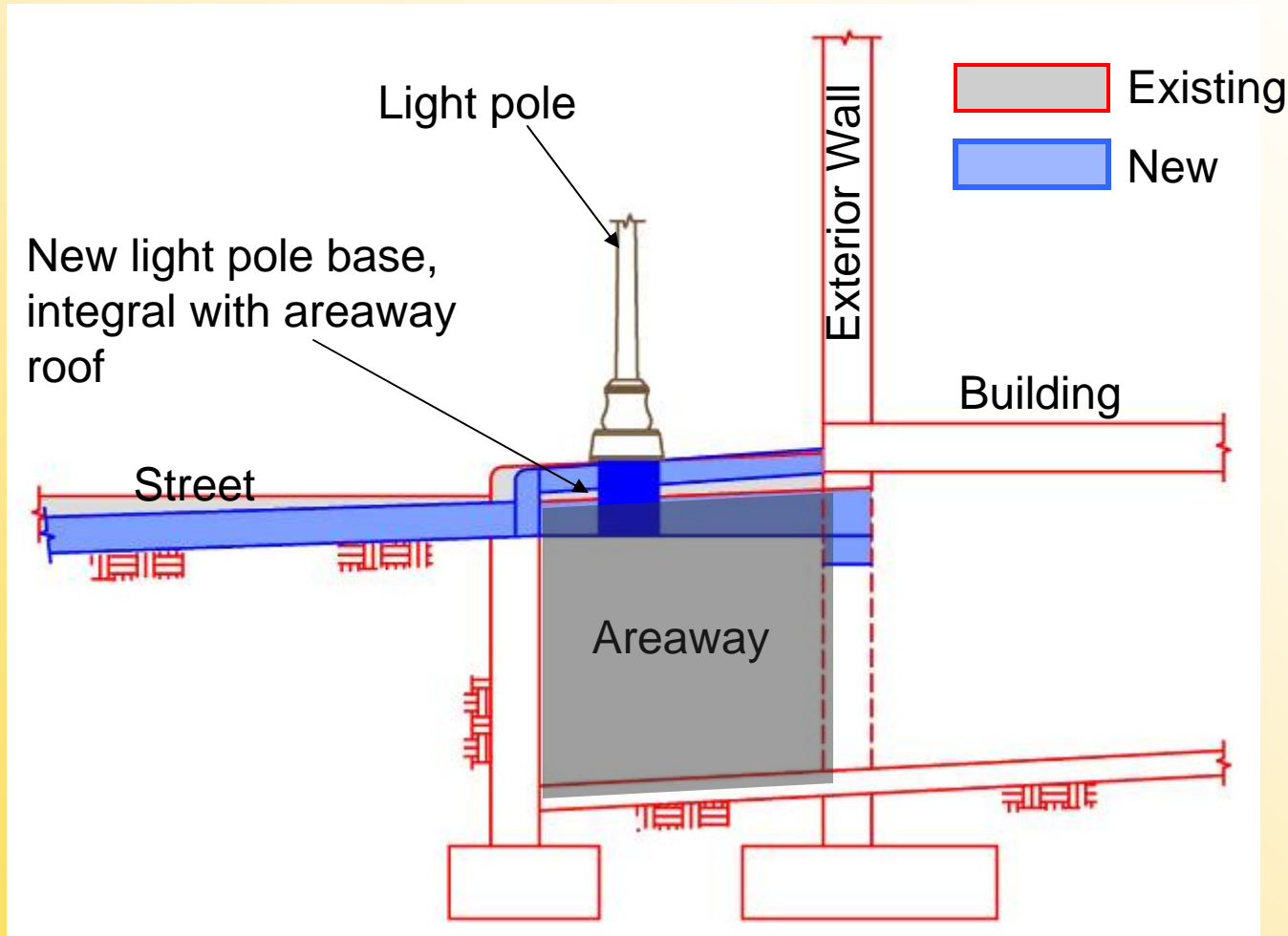
Areaway Photos



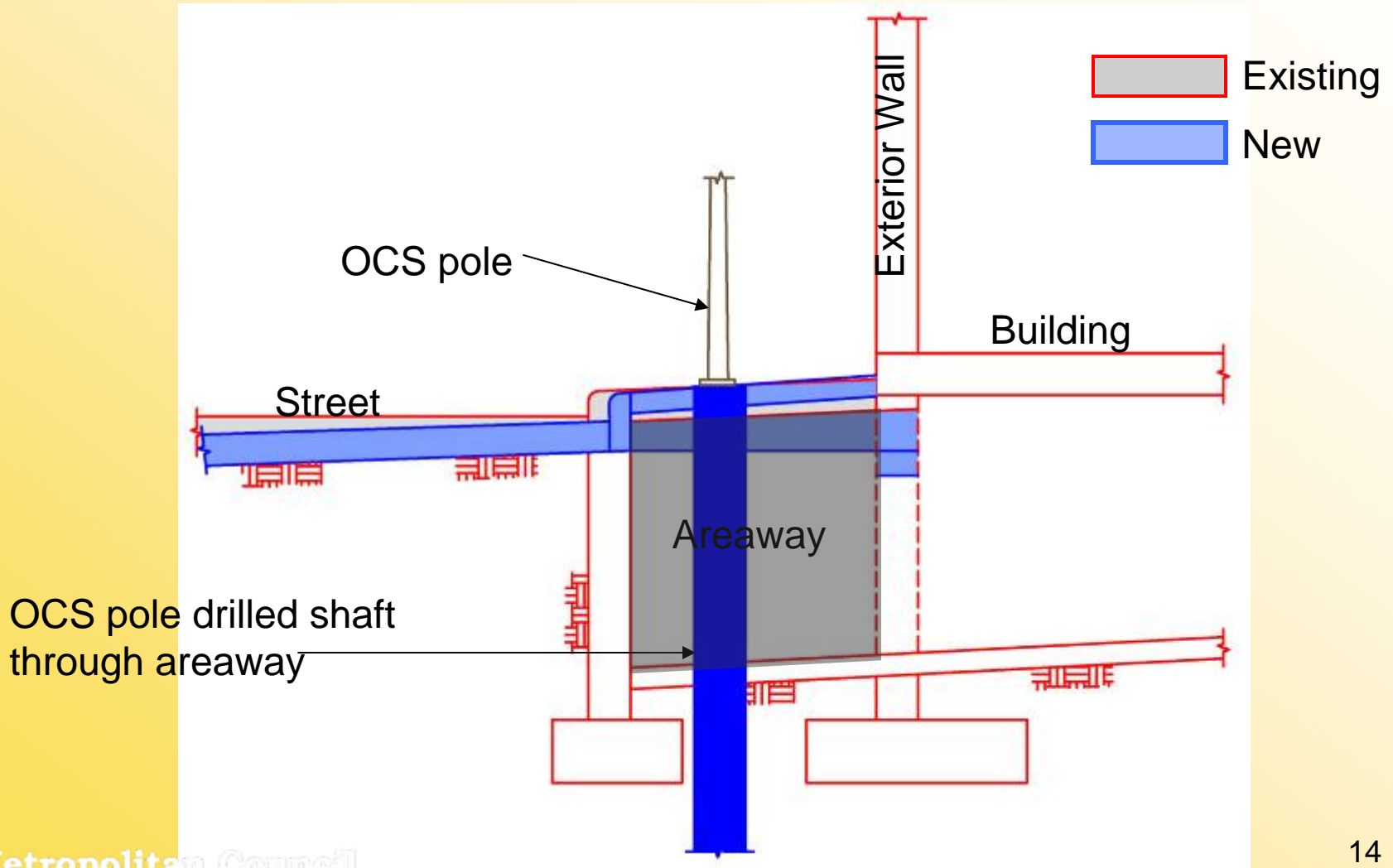
Vacate Areaway



New Areaway Roof with Light Pole



New Areaway Roof with OCS Pole



Central Corridor Light Rail Transit



Station Design

Station Design Update

Central Corridor Light Rail Transit



- Stations have consistent footprint
- Primary materials include copper, concrete, steel, brick, and metal
- Color and material of certain elements can vary from station to station, and can be influenced by station artwork design

Station Design Update

Central Corridor Light Rail Transit



- Cost updated in April 2009, remains within project budget
- Adjustment to canopy design possible by third party as “betterment”

Side Platform Station



Split Side Platform



Center Platform Station



Street Side and Entry



Standard Design Options

Brick, Precast, Metal, Color



Central Corridor Light Rail Transit



Public Art Concepts

Public Art Design Background

Central Corridor Light Rail Transit



- Five artists assigned three stations each
- Each station - unique elements to reflect community
- \$2.8 million budgeted for all stations
 - \$187,000 per station

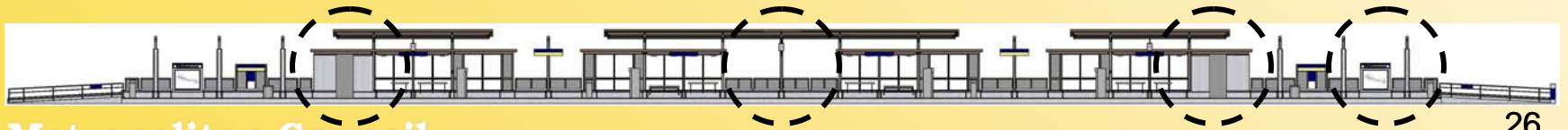
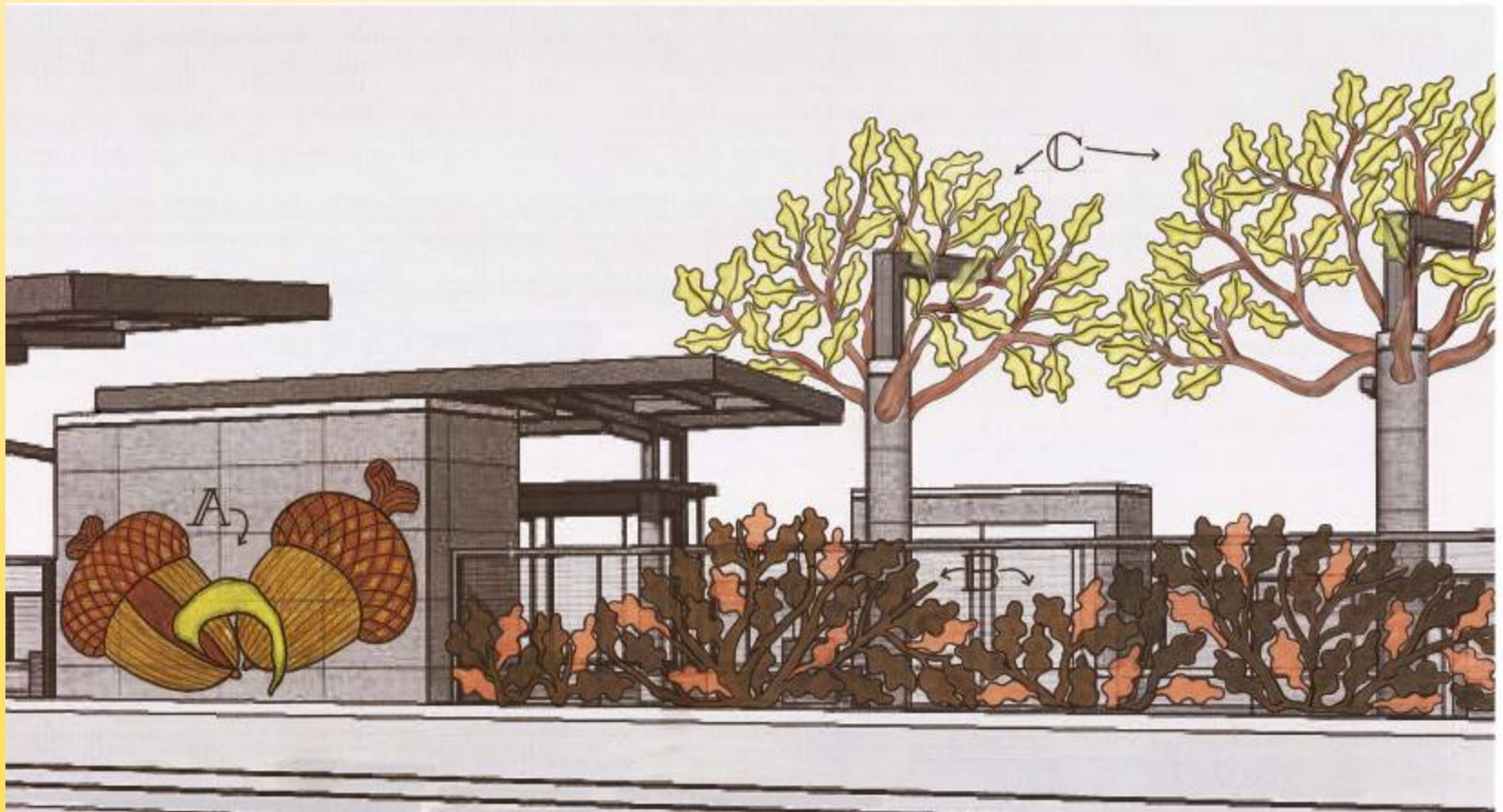
Nancy Blum Stations



Nancy Blum

- West Bank
- East Bank
- Fairview

Nancy Blum Concept



Roberto Delgado Stations



Roberto Delgado

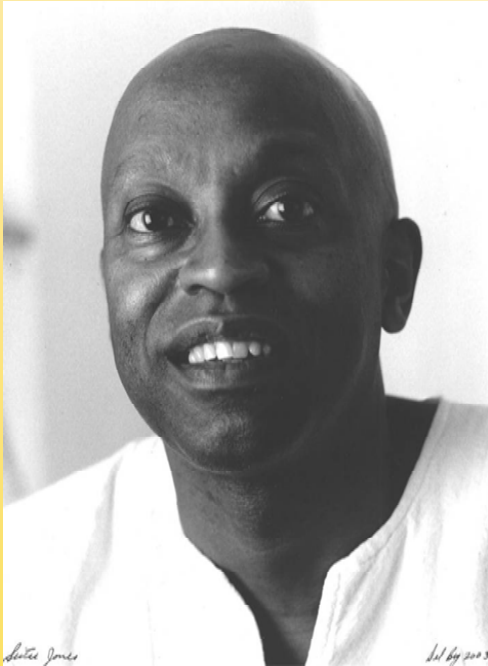
- Stadium Village
- Snelling Avenue
- 4th Street and Cedar Street

Roberto Delgado Concept

Integrated Public Art for the Central Corridor Light Rail Stations - Roberto L. Delgado



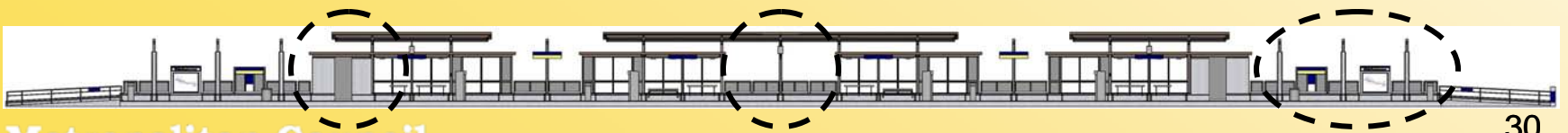
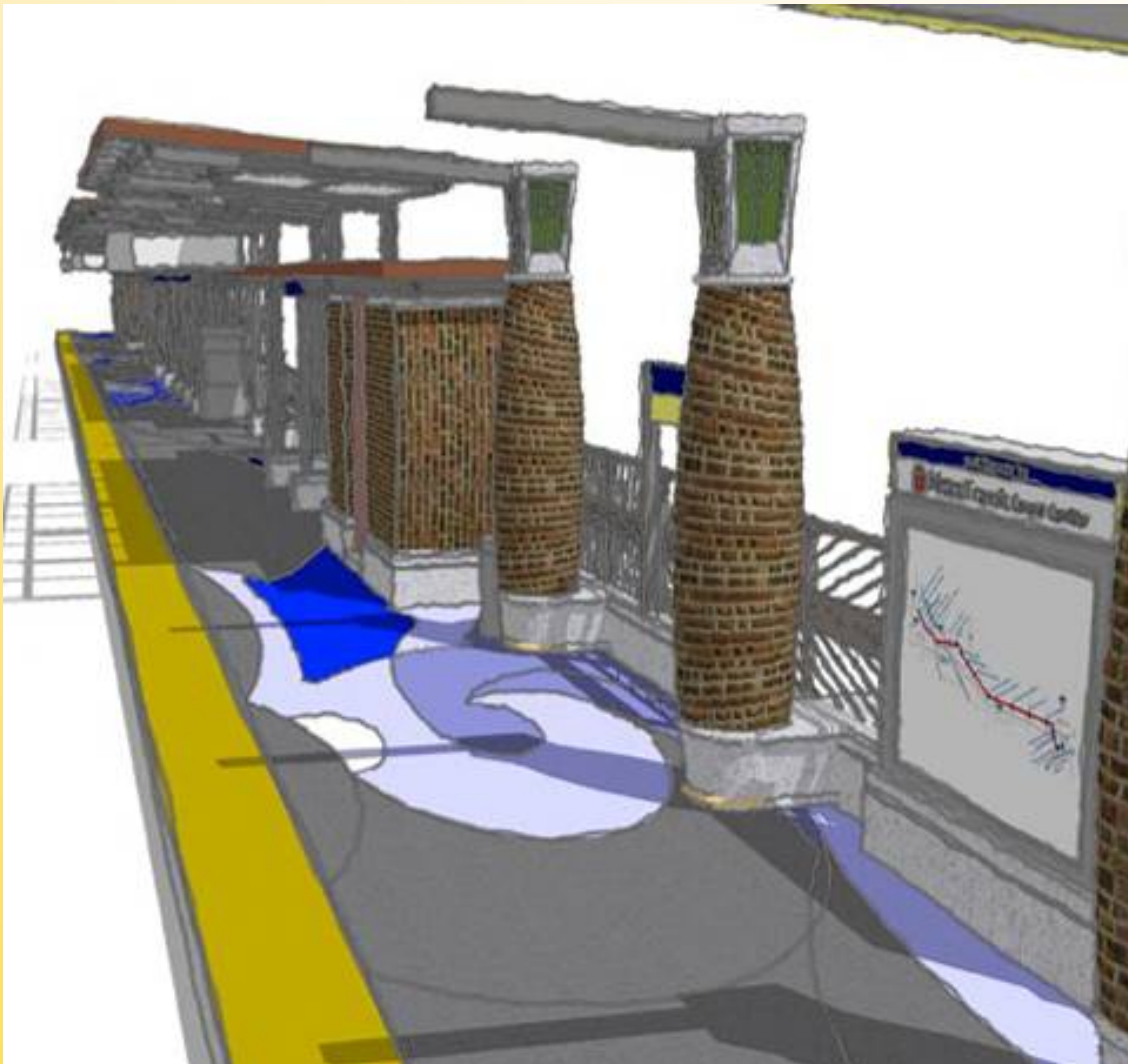
Seitu Jones Stations



Seitu Jones

- Lexington Parkway
- Dale Street
- Rice Street

Seitu Jones Concept



Janet Lofquist Stations



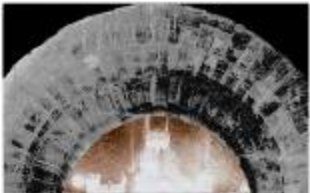
Janet Lofquist

- 29th Avenue
- Capitol East
- 10th Street

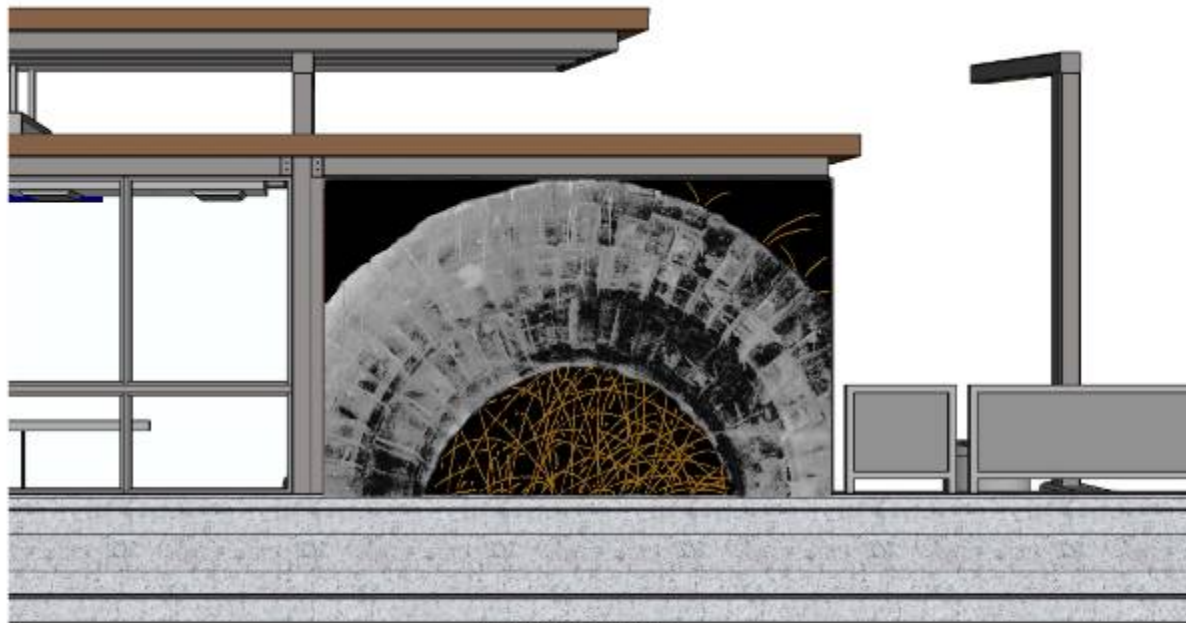
Janet Lofquist Concept



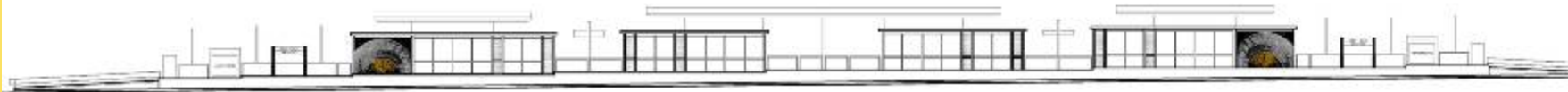
1907 Ice Palace arch
Minnesota Historical Society



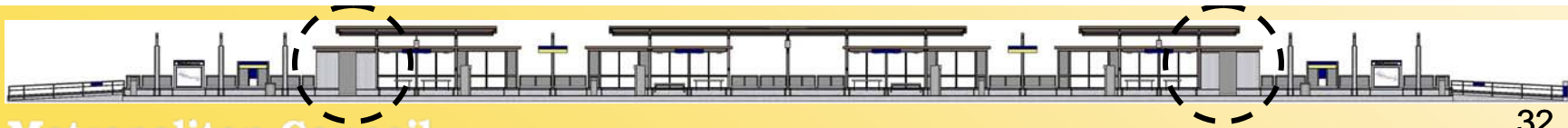
Ice Palace with fireworks



concept to be realized in masonry



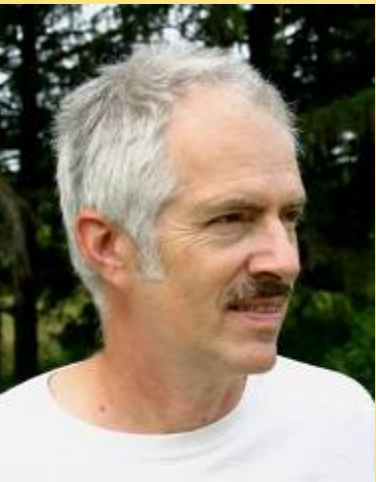
we either try to make the sky to red and come and come in sign of the dedication. for a bill and red it was going green against the white sky and the white color. It was the stone in the sky with the trees and the color was not as white as white and the concrete in the sky. It was a green transparency of the post and of full. From the Ice Palace by F. Scott



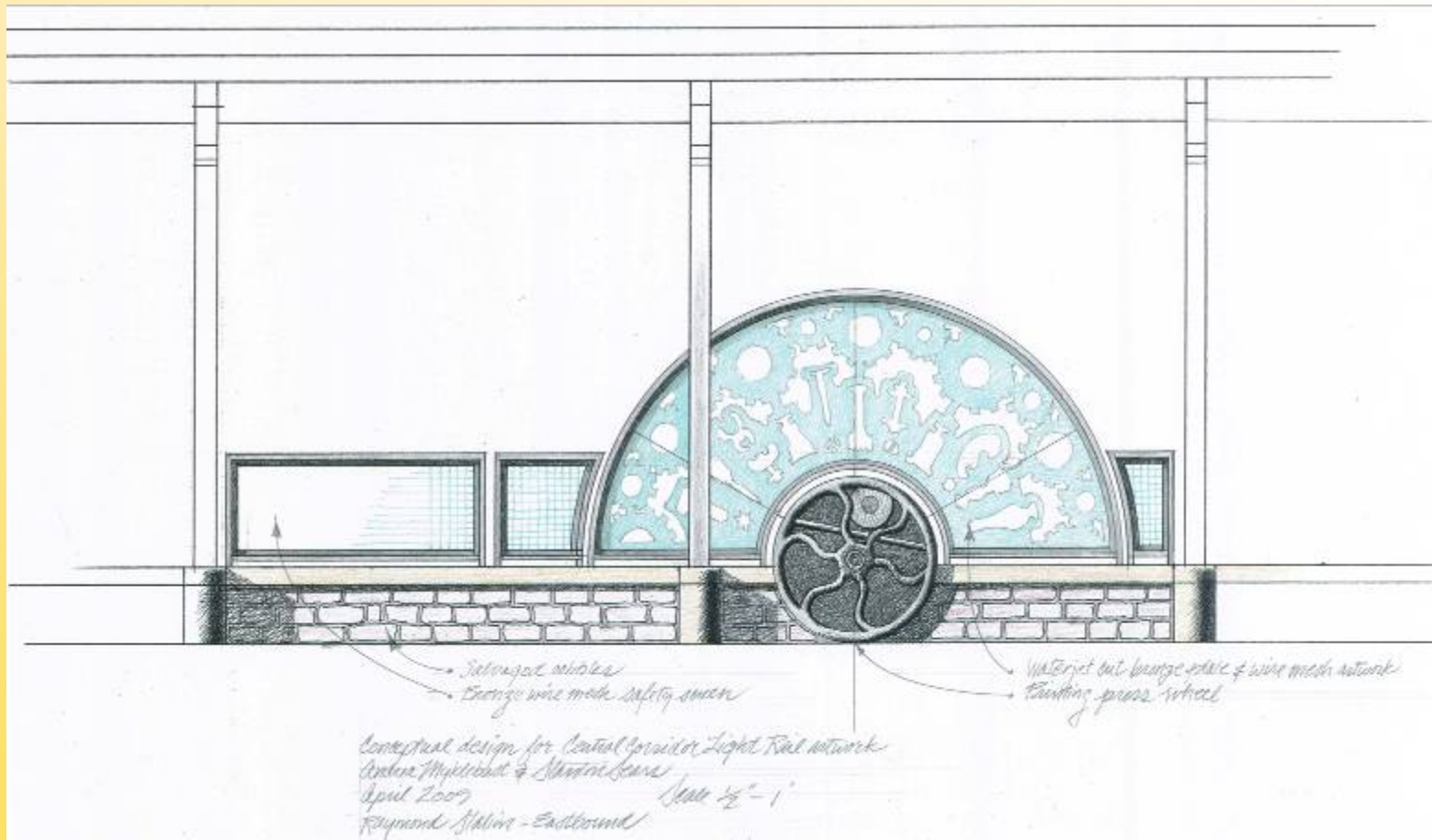
Myklebust+Sears Stations



- Westgate
- Raymond
- Union Depot



Myklebust+Sears Studio Concept



Public Art Process

January

- Create station art committees and hold orientation session

March

- Hold visioning sessions

April

- Artist develops concepts

May-June

- Present concepts to public, CCMC and Met Council

July-Aug

- Present final plans to public
- Seek Met Council approval of preliminary design

Sept-Dec

- Artists advance design

Central Corridor Light Rail Transit



Cash Flow Update

Changes Since 2009 CTIB Grant Application

- Updated expenditure forecast
- \$20 million federal infusion from congress
- Local funders 2009 contributions reduced proportionally

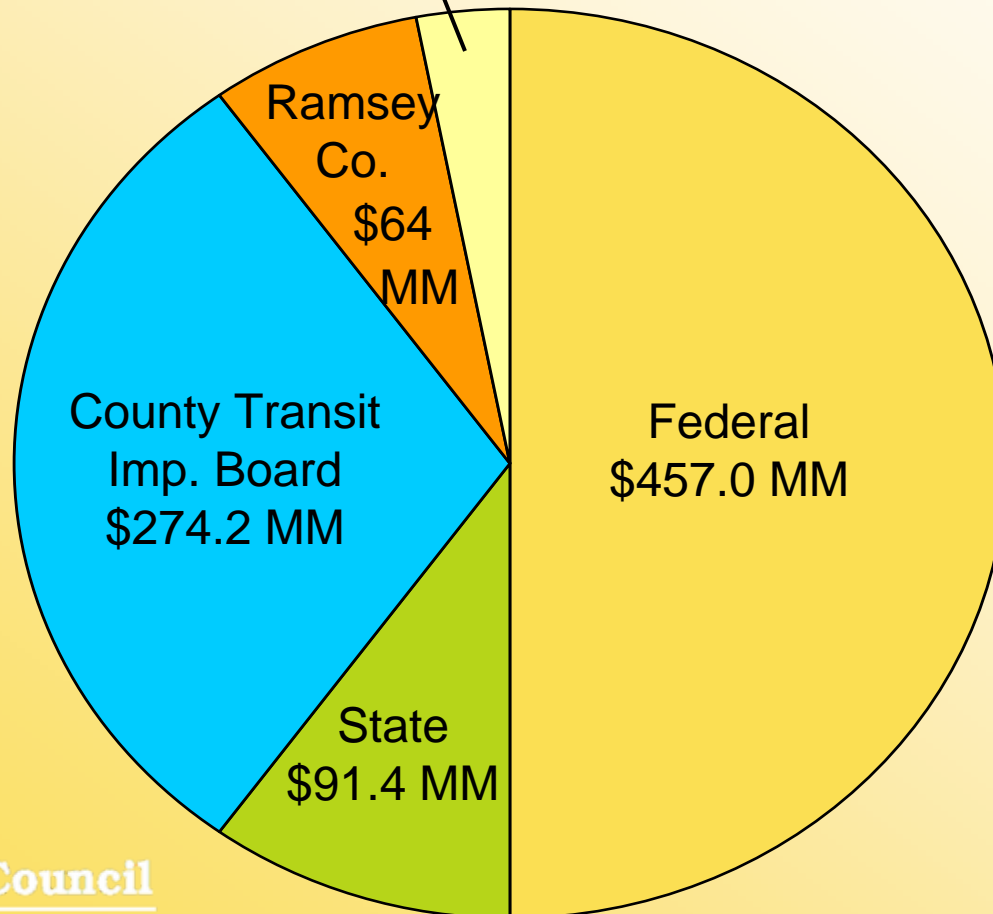


Central Corridor Light Rail Transit

Sources of Funds

Project Cost \$914 Million

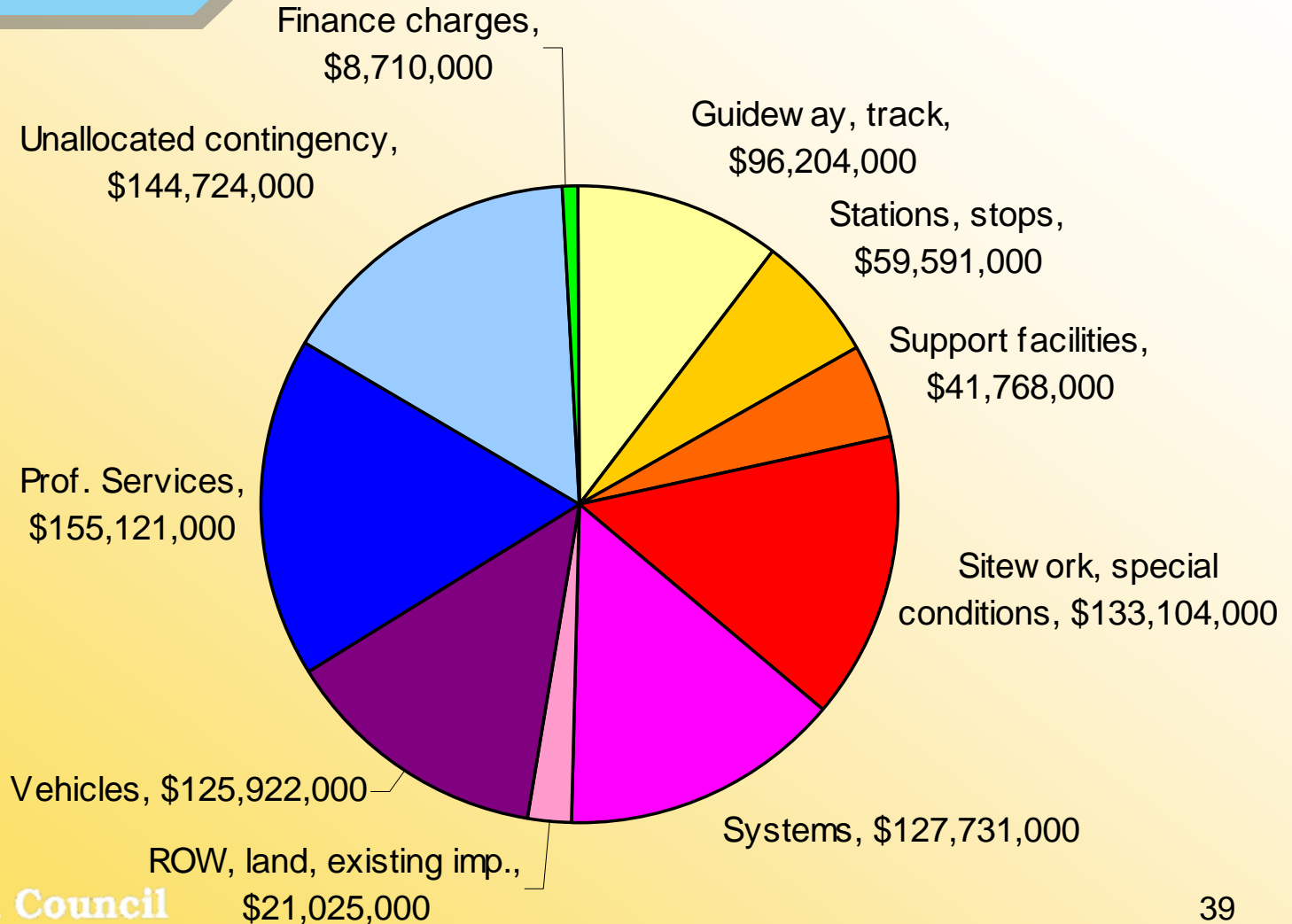
Hennepin Co. \$27.4 MM



Central Corridor Light Rail Transit

Expenditures by Category

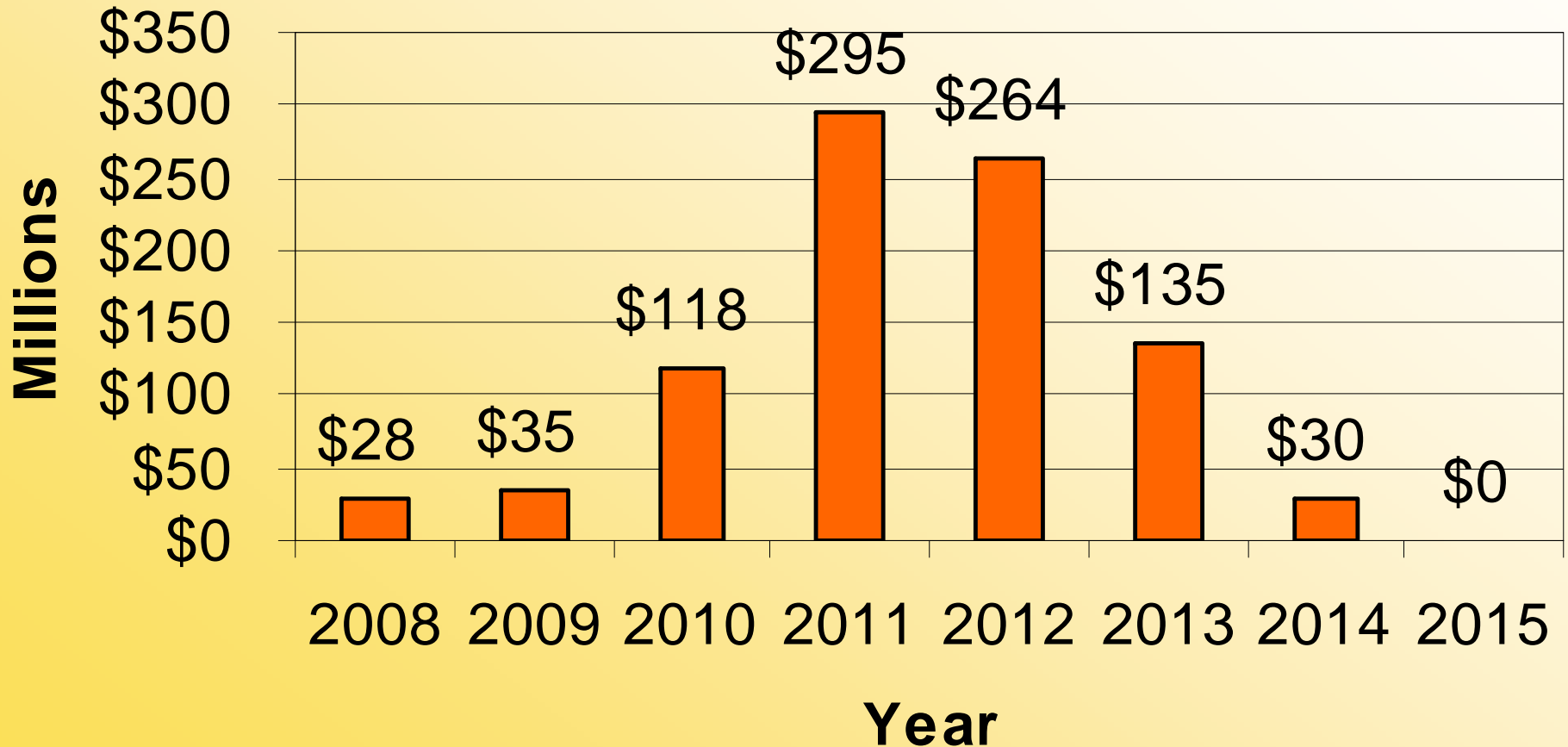
Project Cost \$914 Million



Project Revenue

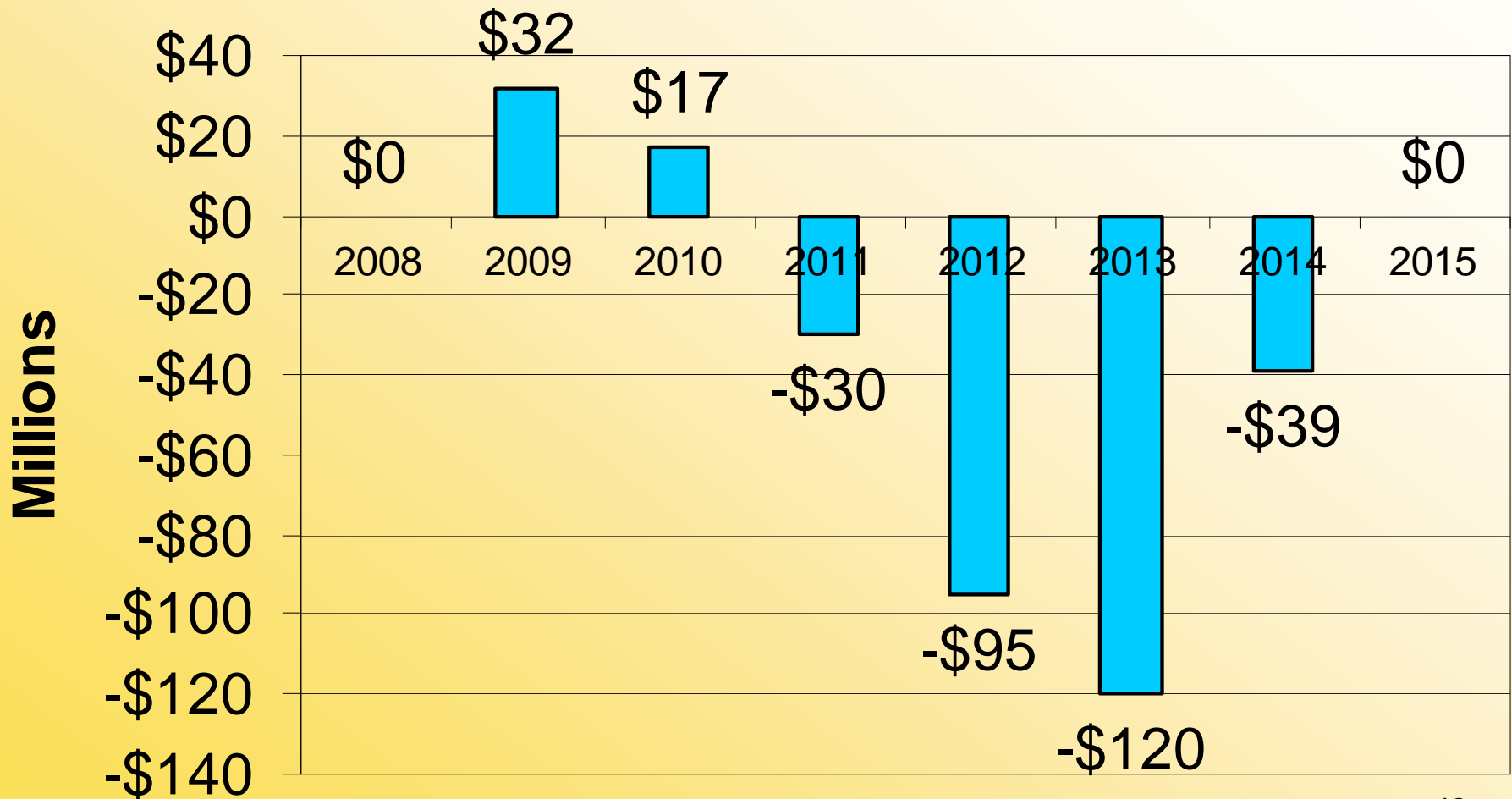


Annual Project Expenditures



Central Corridor Light Rail Transit

Annual Balance (Revenue-Expenditures)



Summary



- Local funders payout in 2009 reduced by \$26.0 MM
- Local funding partners support needed for Letter of No Prejudice activity in 2009
- Met Council developing options for CCLRT cash flow financing 2011 – 2014

Central Corridor Light Rail Transit



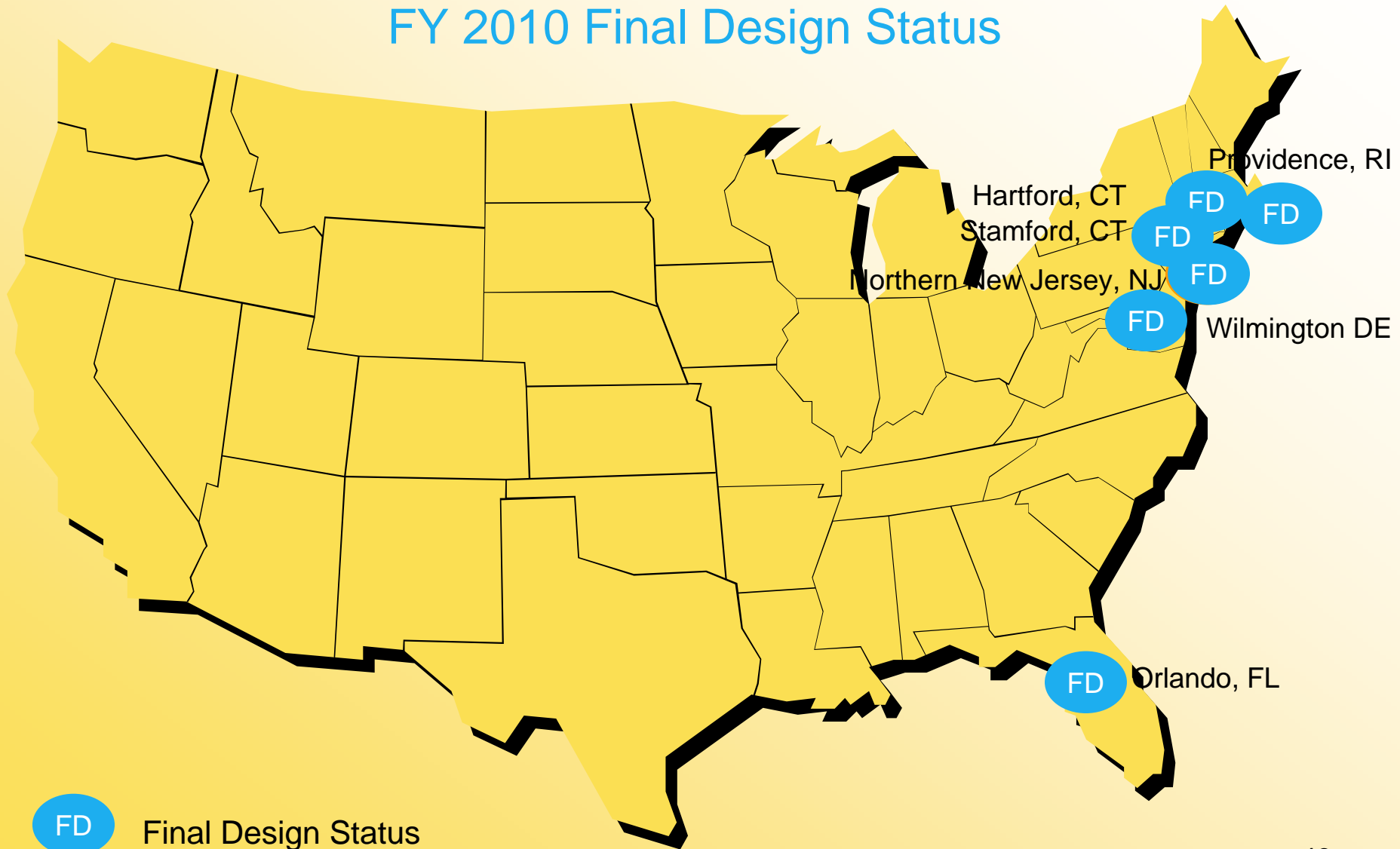
FTA 2010 New Starts Report

New Starts Rating

	<u>2008</u>	<u>2010</u>
Overall	Medium	Medium-High
Local Financial Commitment	Medium	Medium
Project Justification	Medium	Medium-High

Peer “New Starts” Projects

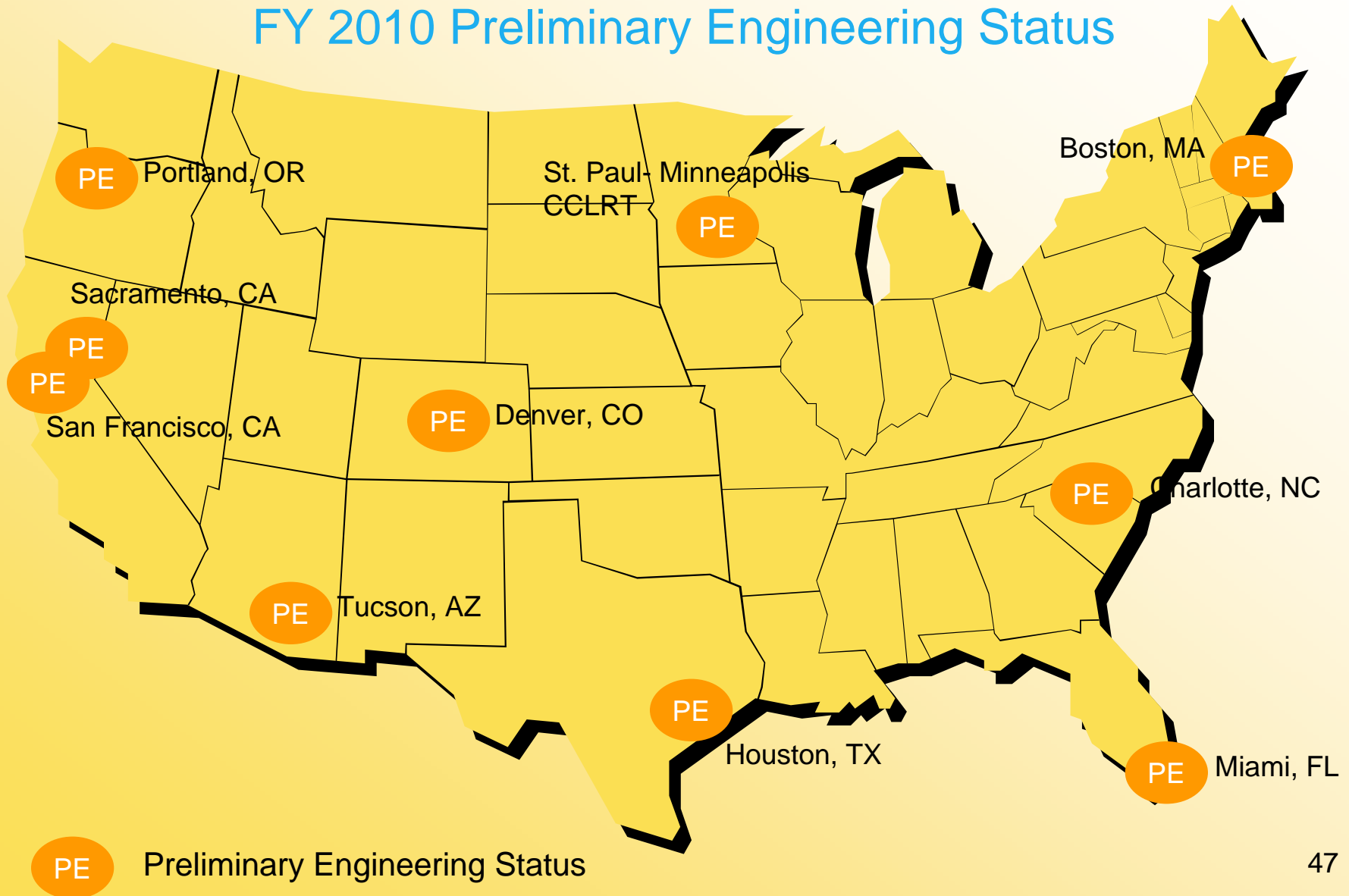
FY 2010 Final Design Status



FD Final Design Status

Peer “New Starts” Projects

FY 2010 Preliminary Engineering Status



Washington Avenue Bridge Pedestrian Deck Modifications



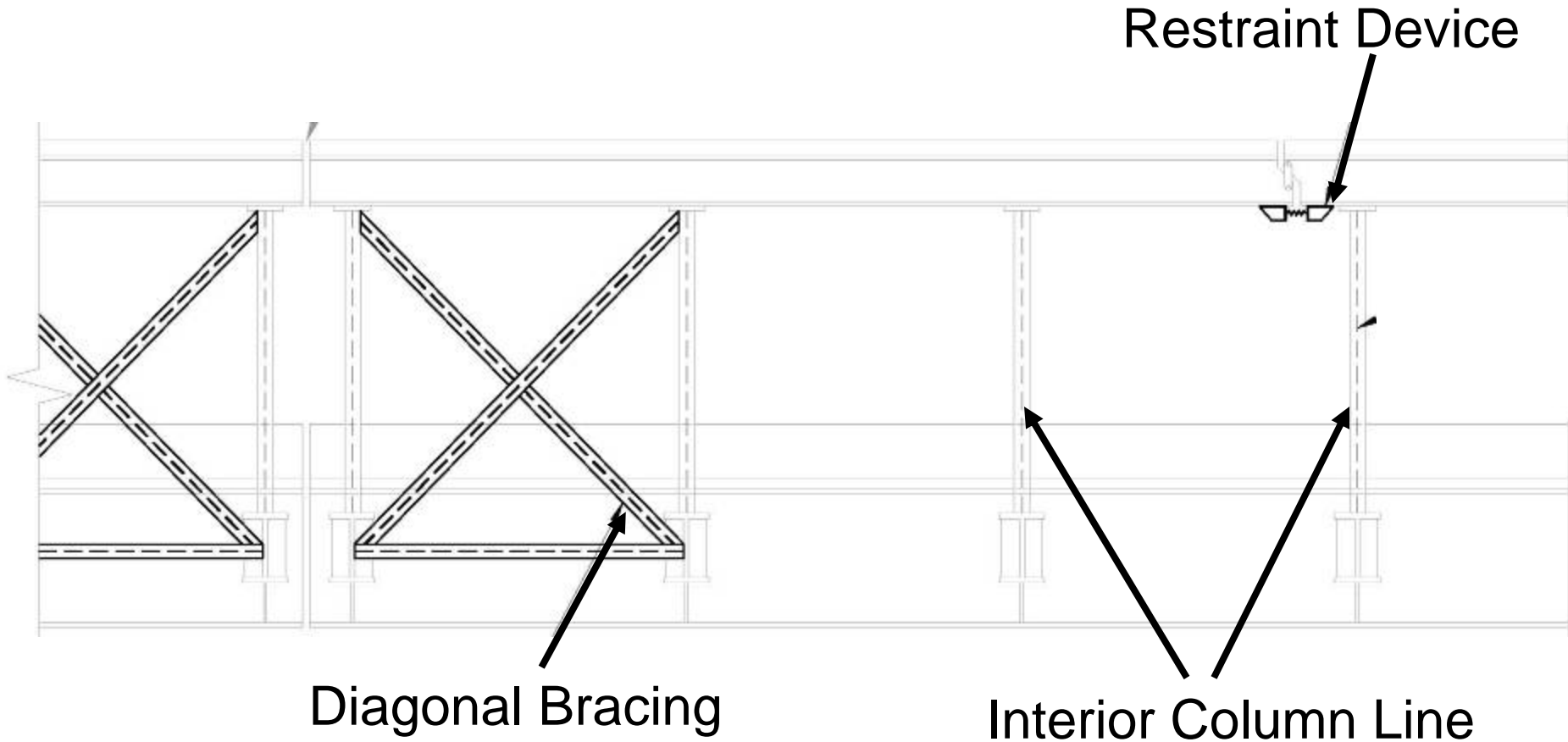
Joe Gladke, Hennepin County

Hennepin County authorized engineering and repair work based on URS Corporation report Aug. 21, 2008



- Worked in close coordination with University of Minnesota and Central Corridor Project Office
- Aug. 22, 2008: restricted bikes and pedestrians to center enclosed segment of bridge upper deck
- Planning began to make structural modifications

WAB Pedestrian Deck Column Retrofit



Bridge modifications performed March and April of 2009



- First phase: installation of structural cross-bracing between center columns of roadway on lower deck
- Construction started March 16, 2009
- Inside lanes of lower deck closed

Bridge modifications (continued)



- Second phase of construction: installation of longitudinal restraint devices to floor beams of pedestrian walkway
- Outside lanes closed during this phase

WAB Pedestrian Deck Timeline

Hennepin County's pedestrian deck retrofit

Nov. 15, 2008

90% Design

Dec. 15, 2008

Final Design

Mar. 16, 2009

Construction begins

Apr. 17, 2009

Complete construction

Summary

- Work completed April 17, 2009
- Project financed by Hennepin County
- Project Cost \$598,156
- Upper and lower decks open to normal operations
- Hennepin County worked in close coordination with University of Minnesota and Central Corridor Project Office



Lafayette Bridge Environmental Assessment

Chris Roy, Mn/DOT

Project Location



Lafayette Schedule

May 2009

- Hold EA Public Hearing

Summer 2009

- Receive FONSI

Fall 2010

- Advertise Contract

2011 - 2014

- Construction

More Information

Check out our website:

- www.centralcorridor.org

Contact Central Corridor Project Office:

- 540 Fairview Avenue North
St. Paul, MN 55104
- Comment Line: 651-602-1645
- Email: centralcorridor@metc.state.mn.us

