

Central Corridor Light Rail Transit

Central Corridor Management
Committee

April 30, 2008



*Improving
mobility*

*Easing
congestion*

*Strengthening
our communities*

Central Corridor Light Rail Transit

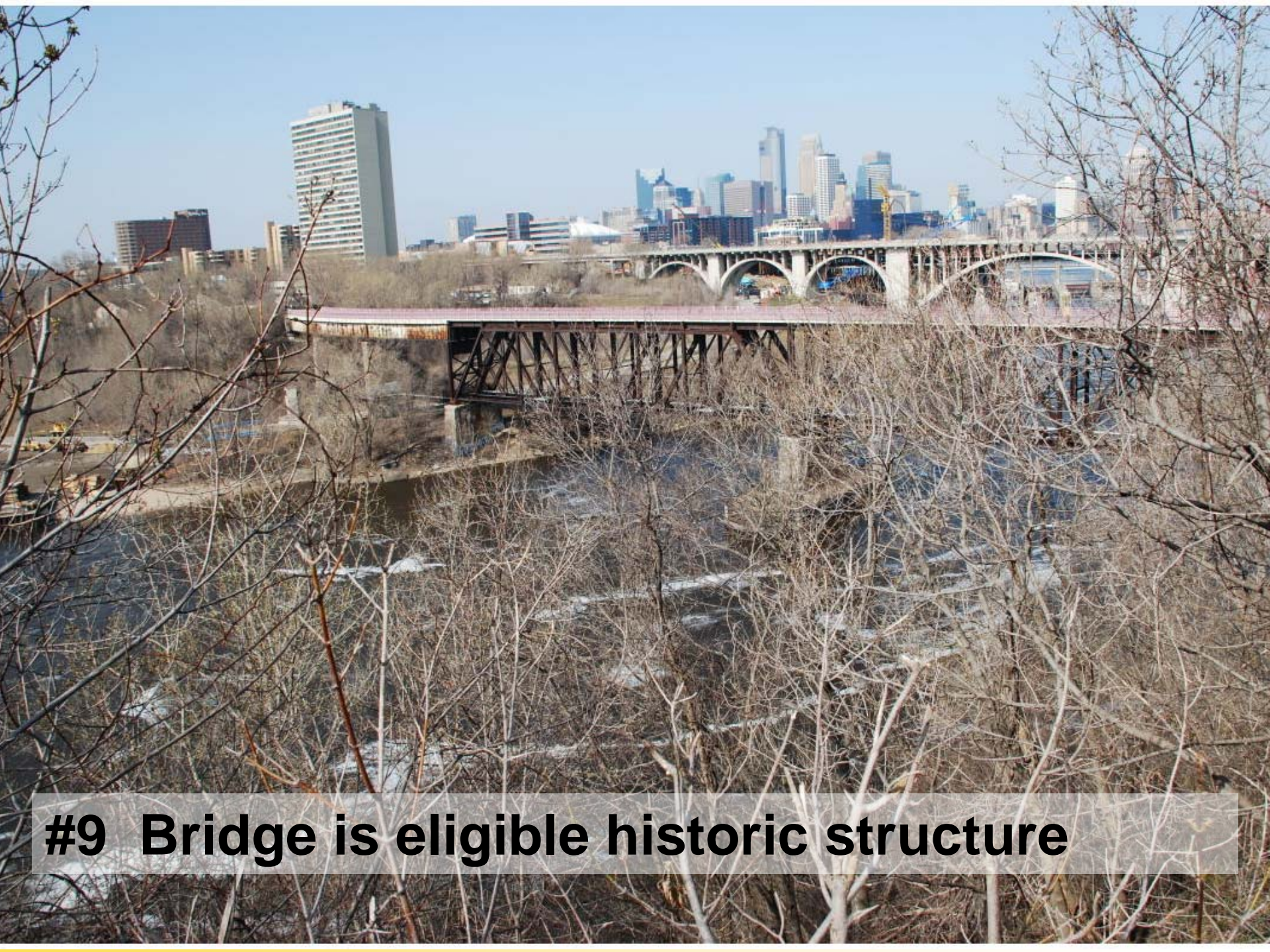


Northern Alignment Outstanding Issues

Environmental Issues



- #9 Bridge is eligible as a historical structure
- #9 Bridge demolition impacts to bike/pedestrian trail
- Removal of Section 8 housing financed by HUD, impacts to remaining units



#9 Bridge is eligible historic structure



Demolition impacts bike/ped trail

Path to Bridge #9



Impacts to Section 8 housing



Additional Environmental Permits

- Corp. of Engineers
- National Park Service/
MNRRA
- FEMA
- Coast Guard



Design Issues



- 25' deep open trench required between 19th Ave. and Law School for LRT to cross Washington Ave. at-grade
- US Coast Guard jurisdiction as a navigable waterway



Trench required between 19th Ave. and Law School to run at-grade with Washington Ave.

Coast Guard looking for opportunities with bridge reconstruction to remove piers



Constructability Issues



- 19th Avenue trench requires retaining walls
 - Impacts to Law School and 19th Ave. structure
 - Construction impacts and method
- Structural integrity of Bridge #9 coffer dam

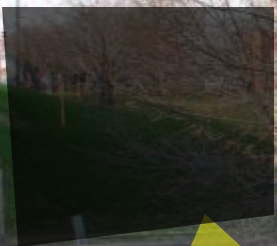
19th Ave.



Law School



30' wide

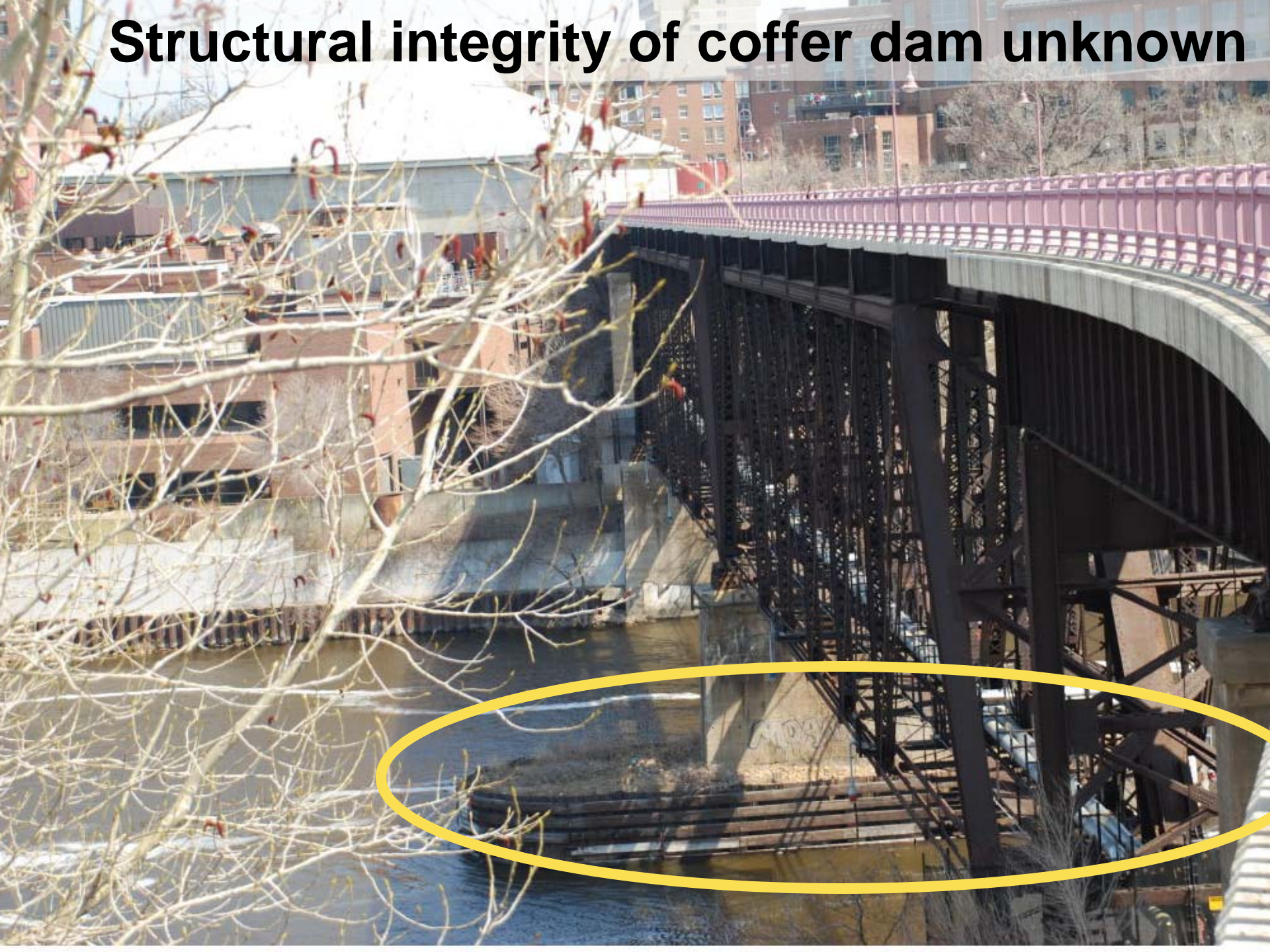


25' deep



Structural and construction impacts to Law School and 19th Ave. roadway and bridge

Structural integrity of coffer dam unknown



Operations and Maintenance Issues



- Fire, life and safety access
 - Difficult in 19th Ave. trench
 - Limited in Dinkytown trench
- Snow removal from 19th Ave. trench
- Maintenance crew access limited due to restricted adjacent available right-of-way

Fire, life, safety, maintenance and construction access limited



Railroad Issues



- Requires right-of-way acquisition from BNSF Railway
- Does not meet track separation requirements between freight and light rail
- Results in \$200 MM insurance, indemnification package due to proximity of passenger rail to freight rail



**NO
TRESPASSING
BNSF RAILWAY**

BNSF POLICE

VIOLATORS WILL
BE PROSECUTED

1-800-832-5452

Requires negotiating with freight railroad company for right-of-way acquisition

Proximity to operating freight railroad does not meet minimum standards



University Avenue

14th Avenue

Light rail

Freight rail

Future Granary Road



**Roy Wilkins Hall
1212 University Ave SE**



**Proximity to operating freight railroad
requires insurance, indemnification in
case of an accident or derailment**

Project Schedule Impacts

	CCLRT	Northern Alignment
Start SDEIS environmental review	July 9, 2007	
Define Project Alignment and Elements	Feb. 27, 2008	May 14, 2008
Restart SDEIS environmental review for Northern Algmnt		June/July 2008
Complete environmental analysis, prepare SDEIS	April 4, 2008	February 2009
Publish SDEIS in Federal Register	June 27, 2008	June 2009
Hold Public Hearing	July 21, 2008	July 2009
Adopt Revised LPA by Met Council	Aug. 27, 2008	Aug. 2009
Submit New Starts Application	Sept. 5, 2008	Sept 4. 2009
Publish draft FEIS	Jan 11, 2009	Jan 2010
FTA issues Record of Decision on FEIS (min. of 30 days)	Feb. 25, 2009	Feb 2010
FTA approves project to move into Final Design	May 6, 2009	May 2010