

Central Corridor Light Rail Transit

“What is Preliminary
Engineering?”

Central Corridor Management
Committee

May 9, 2007

Mark Fuhrmann, Project Director



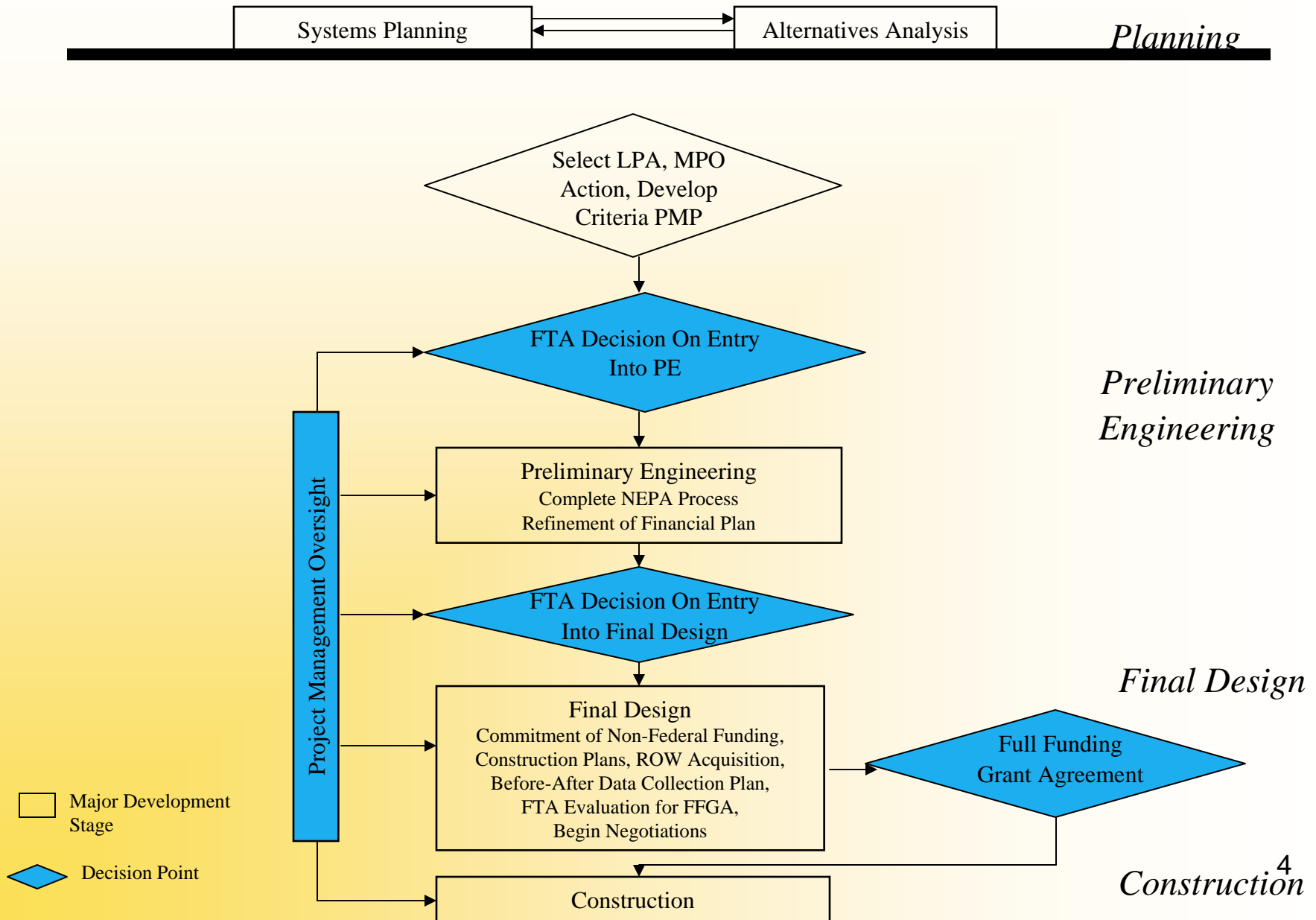
Central Corridor Light Rail Transit



Central Corridor Light Rail Transit



New Starts Planning and Project Development Process



FTA Required Preliminary Engineering (PE) Activities

- Develop project design detail
- Update project cost estimate
- Update ridership and project benefits
- Detail project schedule

FTA Required (PE) Deliverables

- Complete Final Environmental Impact Statement
- Detail Project Management Plan
- Update long-range rail and bus fleet management plans
- Refine Financial Plan
- Update New Starts evaluation criteria

Develop Project PE Detail

- 30% complete plans and specifications
- Informs several key scope decisions
- Supports completion of FEIS
- Refines cost estimate
- Satisfies FTA Cost Effectiveness Index (CEI)
- Local decision to further advance design

Relocation of Existing Utilities



Central Corridor Light Rail Transit

Civil



Central Corridor Light Rail Transit

Structures



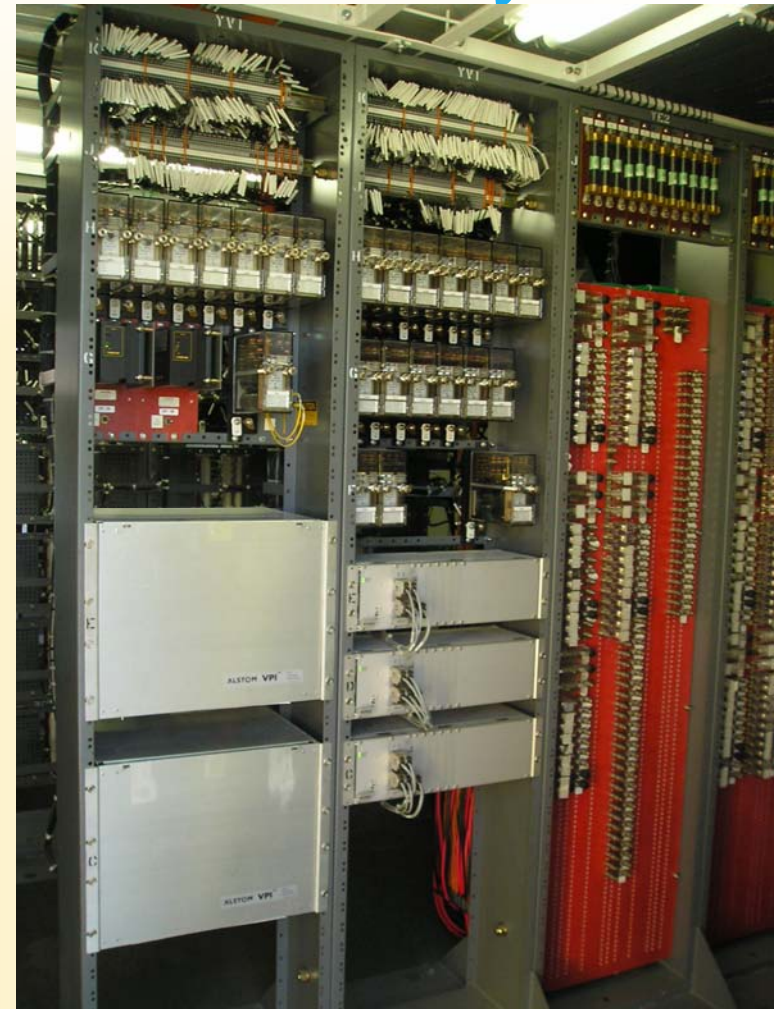
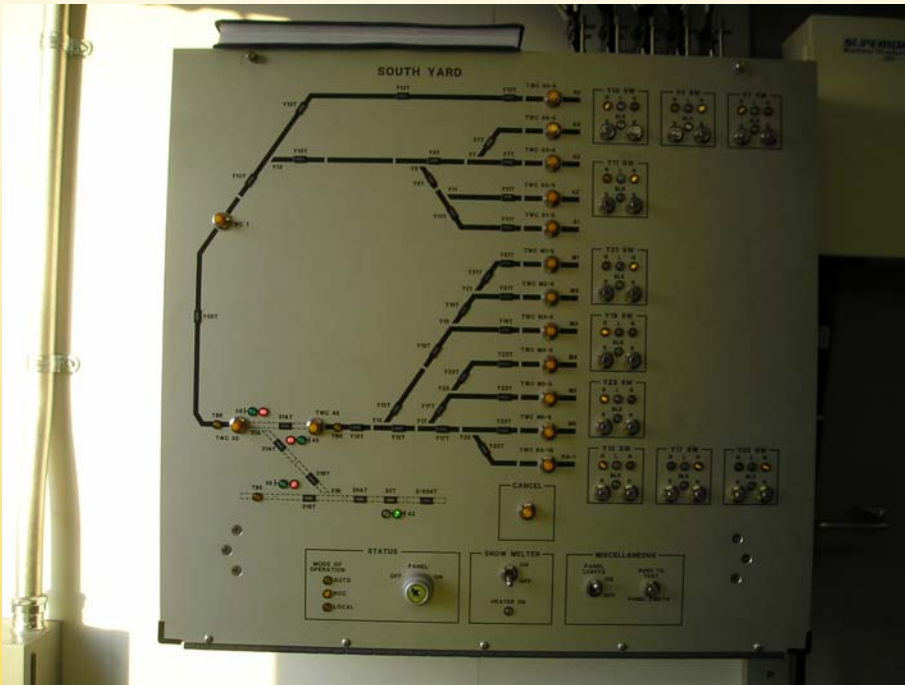
Stations



Traction Power System



Signals and Communications Systems



Fare Collection System



Operations and Maintenance Facilities



Light Rail Vehicles



Advanced Preliminary Engineering

- 70% complete plans and specifications
- Address major identified project risks
- Sufficient detail to gain FTA approval to enter Final Design

Final Environmental Impact Statement

- Social
- Economic
- Environmental
- Transportation
- FTA issuance of a Record of Decision