

Central Corridor Light Rail Transit

Community Advisory Committee

July 17, 2008



*Improving
mobility*

*Easing
congestion*

*Strengthening
our communities*

Today's Agenda



- Reports
- Project Update
 - FTA New Starts Guidelines
 - University Ave. Design
 - Municipal Consent
 - U of M Memorandum of Understanding
- Technical Reports
 - Traffic Study #5
 - Supplemental Draft Environmental Impact Statement (SDEIS)

Central Corridor Light Rail Transit



Outreach Coordinator's Report

Outreach Coordinators Report

Central Corridor Light Rail Transit



"The train's going to get built no matter what. Take advantage of it and see how you can work with it. Get info. Ask questions," said Bobby Lee, owner of Paj Tawg, a store selling groceries, housewares and fabric at 225 University Ave. W. in St. Paul. Lee encourages businesses to take the time to answer a business survey to help engineers design the Central Corridor LRT line and plan mitigation measures to help businesses during the construction phase.

Outreach Coordinators Report

Central Corridor Light Rail Transit

Alliance Clinic provides treatment to individuals and families addressing chemical and mental health needs. Most clients use public transportation to reach the clinic. Central Corridor LRT will provide better access to those seeking help.



Central Corridor Light Rail Transit



PROJECT UPDATES

Central Corridor Light Rail Transit



FTA New Starts Guidance

FTA New Starts Guidance

Central Corridor Light Rail Transit



- Project documentation due September 5
- Revised CEI “Medium” threshold to \$24.49

CCLRT Current CEI	CCLRT Escalated CEI	FTA “Medium” CEI
23.98	24.82	24.49

Central Corridor Light Rail Transit



University Ave. Design Update

Parking



- St. Paul study estimates over 25,000 off-street spaces in lots and ramps within a ¼ mile of proposed LRT stations along University Ave.
- 1,150 existing on-street spaces
- 975 lost due to mandatory and desirable project elements

Completed Steps



- ✓ **Late March** - Worked with City, CCP and outreach staff to identify most impacted areas
- ✓ **Early April** - Met with most impacted properties
- ✓ **Mid April** - Held general public meetings
- ✓ **April-July** –Surveyed businesses

What we heard from the public



- Concern about of loss of on-street parking
- Ensure pedestrian crossings comply with ADA requirements
- Do not build drive lanes over infrastructure for infill stations

Next Steps



- **July** – Compile information, prepare a report
- **August** – Present preliminary findings to CCMC, CAC & BAC
- **September** – Work with City and business community on site specific parking management strategies
- **Fall 2008** - Address parking impacts/ mitigation in FEIS

Central Corridor Light Rail Transit



Municipal Consent

Municipal Consent Process



- June 20 – Minneapolis unanimously approved
- June 24 – Ramsey County unanimously approved
- July 8 – Hennepin County unanimously approved
- July 9 – St. Paul unanimously approved

Central Corridor Light Rail Transit



University of Minnesota Memorandum of Understanding

U of M Memorandum of Understanding

- Project partners identified three types of Improvements
 - Baseline project scope
 - Mitigation measures
 - Betterments



U of M Memorandum of Understanding

- Responsibilities
 - Metro Transit will control design for CCLRT
 - Responsible road authority will control design elements of road
 - University shall donate necessary real property



U of M Memorandum of Understanding

- Next Memorandum of Understanding
 - Detailed design
 - Construction
 - Ownership
 - ROW donations
 - Operations
 - Maintenance



Central Corridor Light Rail Transit



TECHNICAL REPORTS

Central Corridor Light Rail Transit



Traffic Study #5 University Ave.

Traffic Study #5

Purpose

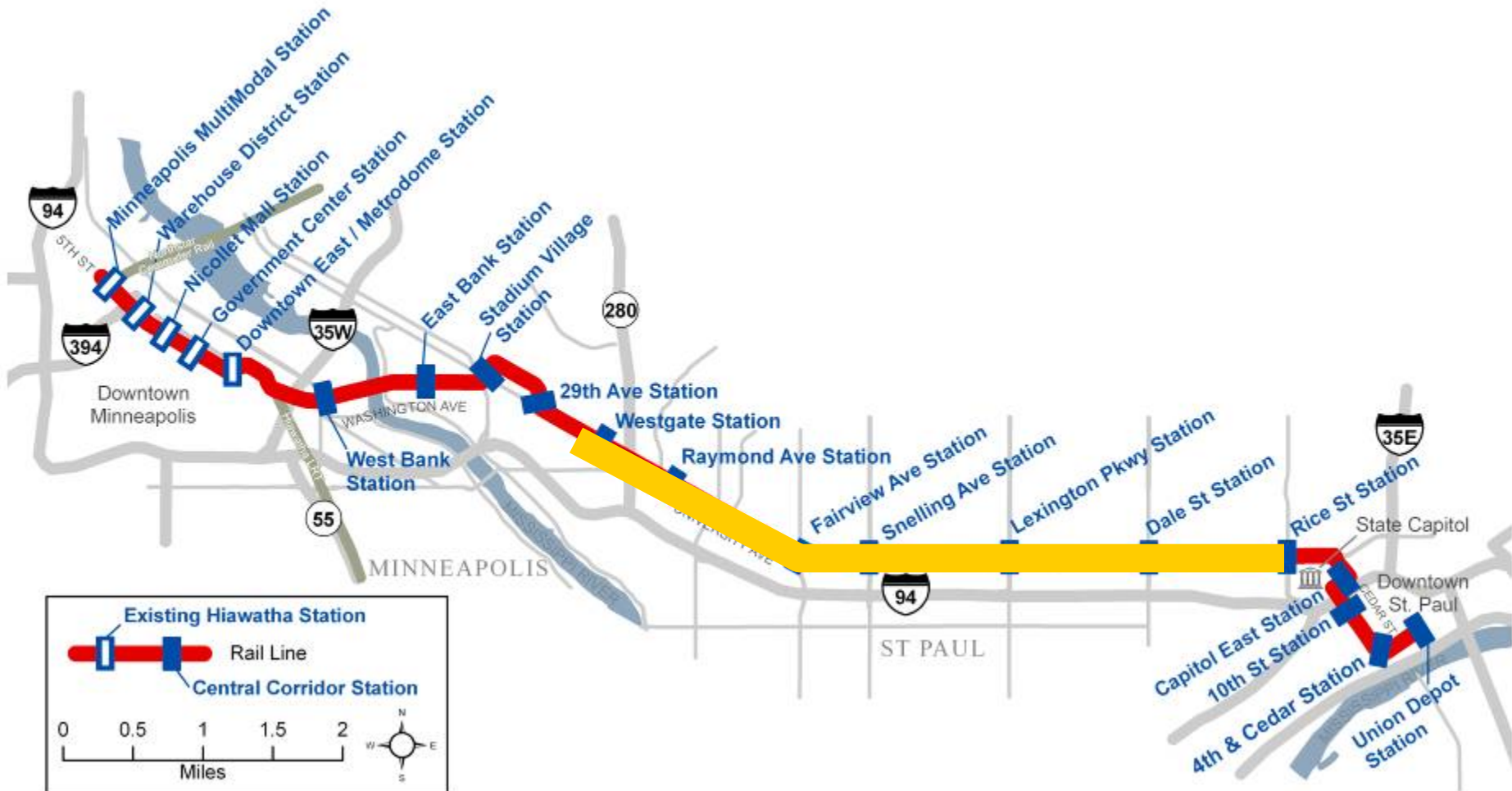
Central Corridor Light Rail Transit



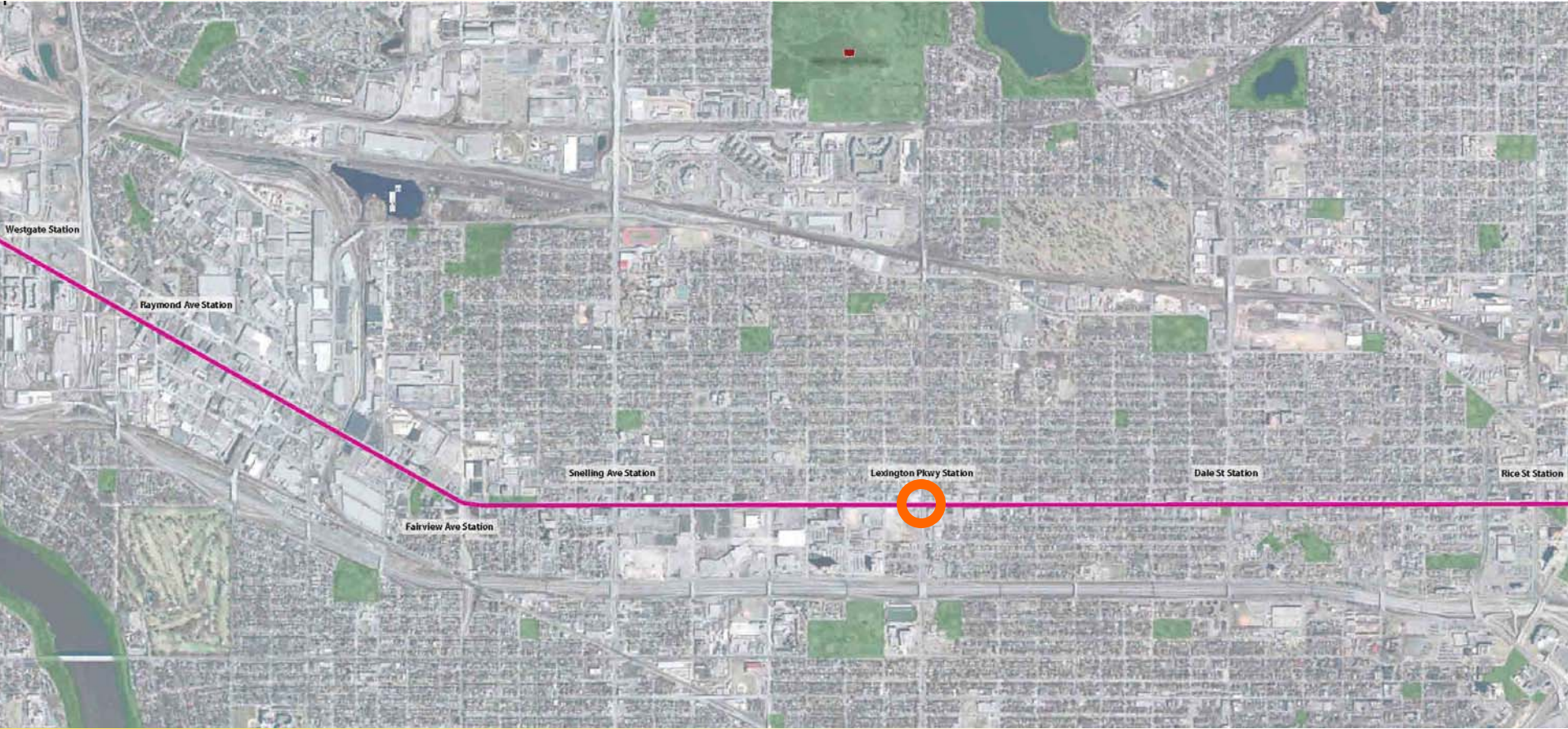
- Determine impacts to roadway and intersection operations assuming
 - A single through lane in each direction
 - Existing turning movement counts
 - University Ave, from Eustis St. to Rice St. in St. Paul


Central Corridor Light Rail Transit

Traffic Study #5 Scope of Study



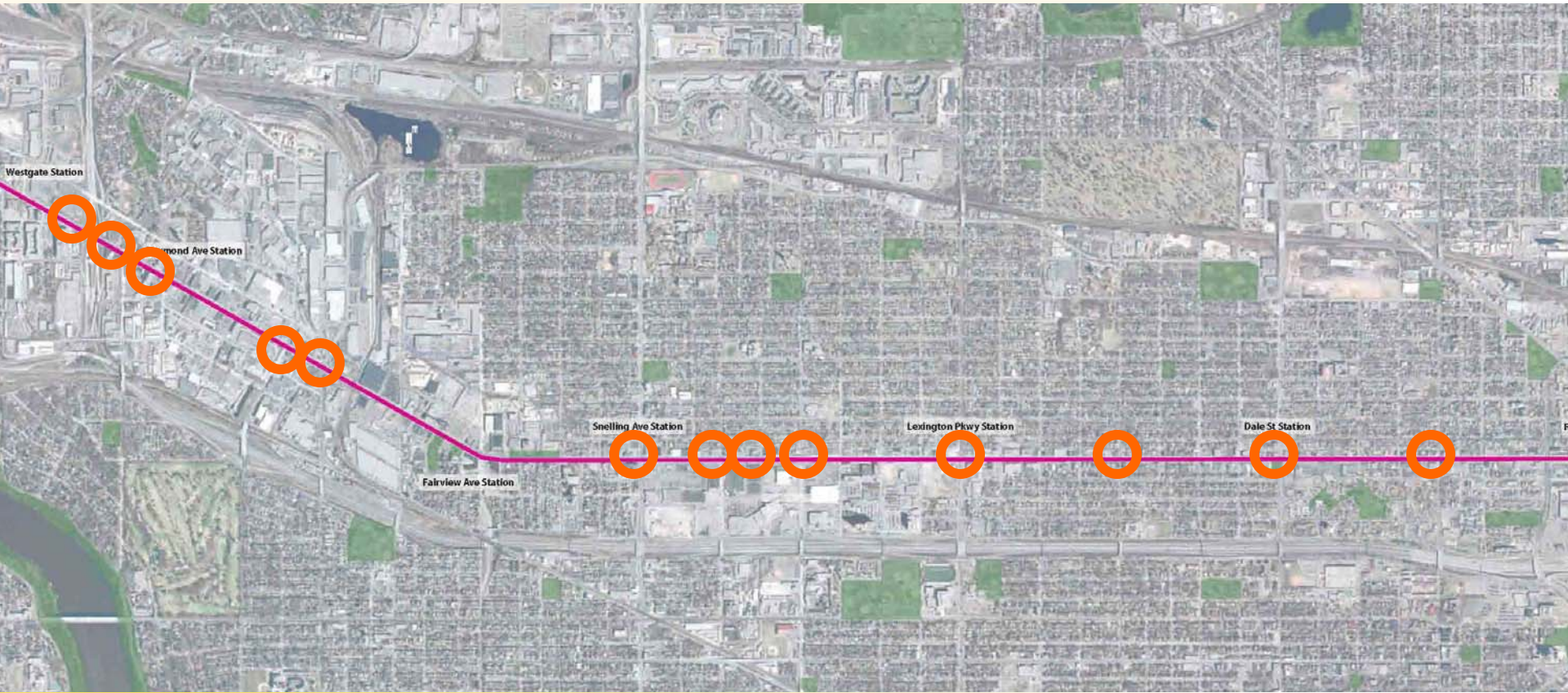
Traffic Study #5 Existing Conditions



 Level of Service E or F, 2007 PM traffic

Central Corridor Light Rail Transit

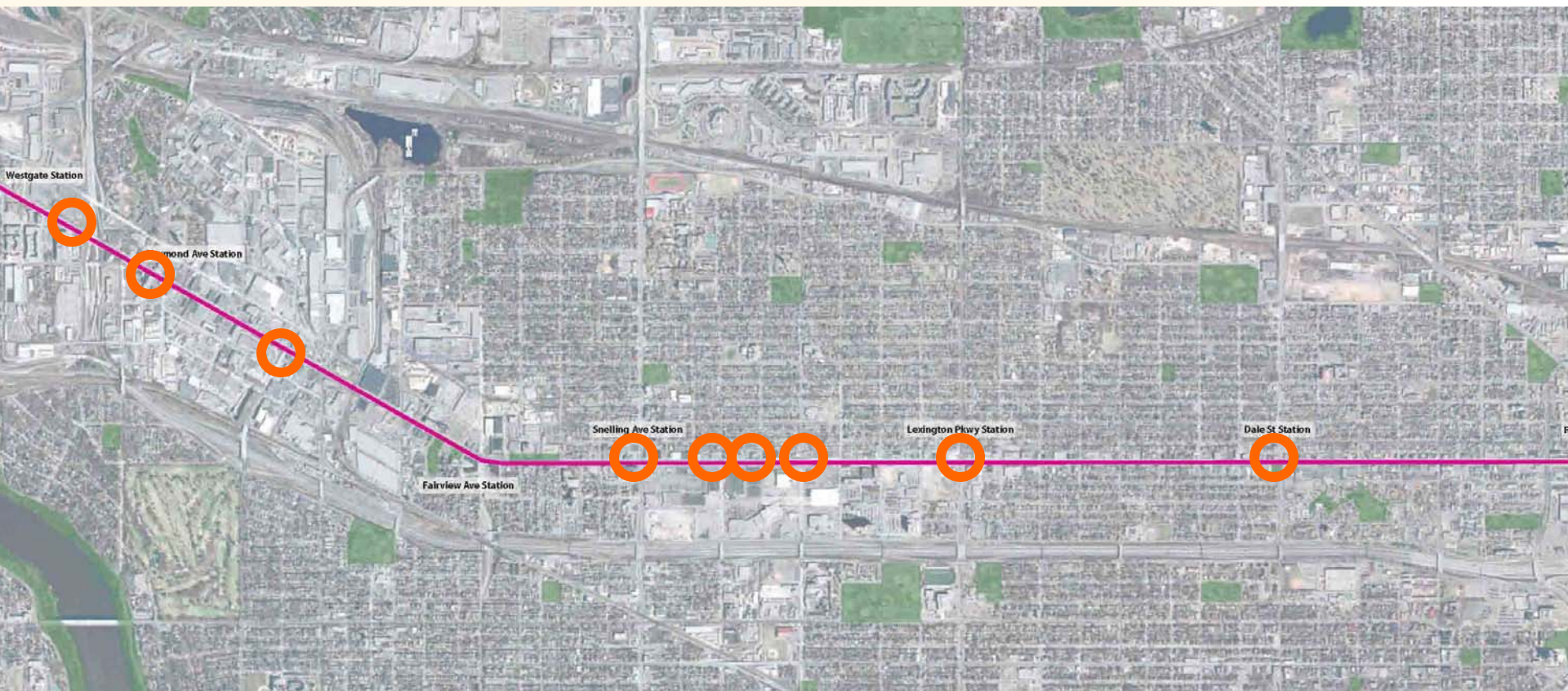
Traffic Study #5 Single Lane



○ Level of Service E or F, 2007 PM traffic

Central Corridor Light Rail Transit

Traffic Study #5 Single Lane w/ 10% Reduction



○ Level of Service E or F, 2007 PM traffic

Traffic Study #5

Findings

Central Corridor Light Rail Transit



- Reduction to one lane in each direction
 - 13 intersections at LOS E or F
- Reduction to one lane in each direction and assume 10% reduction in traffic
 - 9 intersections at LOS E or F

Central Corridor Light Rail Transit



SDEIS Status

SDEIS Status Publication



- NOA published July 11 (Federal *Register*) and July 14 (Minnesota *EQB Monitor*)
- 45-day public comment began July 11
- Comment period ends August 25

SDEIS Status

Public Hearings



- Three hearings scheduled:
 - Monday, August 4 – Wilder Foundation at noon
 - Thursday, August 7 – Brian Coyle Center at 6:00 p.m.
 - Saturday, August 9 – Goodwill Easter Seals at 2:00 p.m.

SDEIS Status Available for Review

- Document available at multiple locations
 - Online at www.centralcorridor.org
 - At 13 local libraries / resource centers
 - Hard copies sent to local jurisdictions, resource agencies, others as required



Focus of SDEIS



- Environmental impacts not disclosed in 2006 DEIS
- Nine key issues:
 - HLRT/Central Connection
 - U of M East Bank alignment
 - Potential Additional Stations
 - Capitol Area Alignment and Stations
 - Downtown St. Paul Alignment and Stations
 - Traction Power Substations
 - 3-Car Platforms
 - Vehicle Maintenance Facility
 - Washington Avenue Bridge

More Information

Check out our website:

- www.centralcorridor.org

Contact Central Corridor Project Office:

- 540 Fairview Avenue North
St. Paul, MN 55104
- Comment Line: 651-602-1645
- Email:
centralcorridor@metc.state.mn.us

