

Central Corridor Light Rail Transit

Community Advisory Committee

March 15, 2007



*Improving
mobility*

*Easing
congestion*

*Strengthening
our communities*

Community Advisory Committee

- **Purpose**
 - Advise Corridor Management Committee (CCMC)
 - Provide input and feedback to staff
 - Issues related to planning, design & construction
- **Responsibilities**
 - Advise CCMC on issues such as station design, parking, accessibility and construction mitigation
 - Facilitate greater citizen participation
 - Provide feedback on structure and effectiveness of communication and public involvement efforts

Central Corridor Light Rail Transit

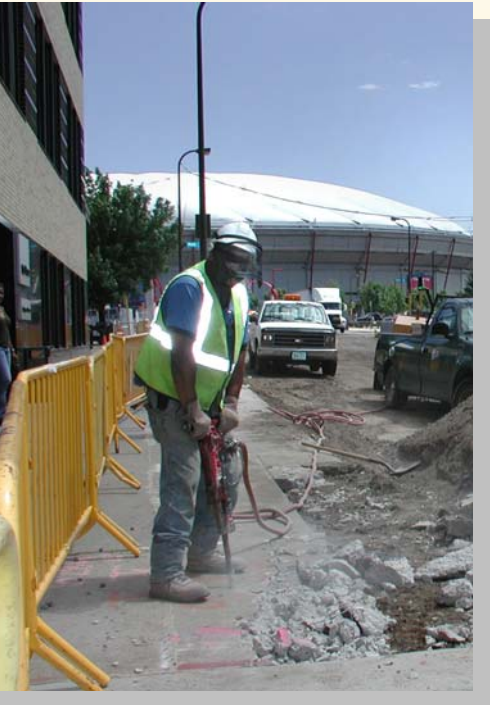


Metropolitan Council's Disadvantaged Business Enterprise (DBE) Program

Wanda Kirkpatrick
Director, Office of Diversity

Overview of Federal DBE Program

Central Corridor Light Rail Transit

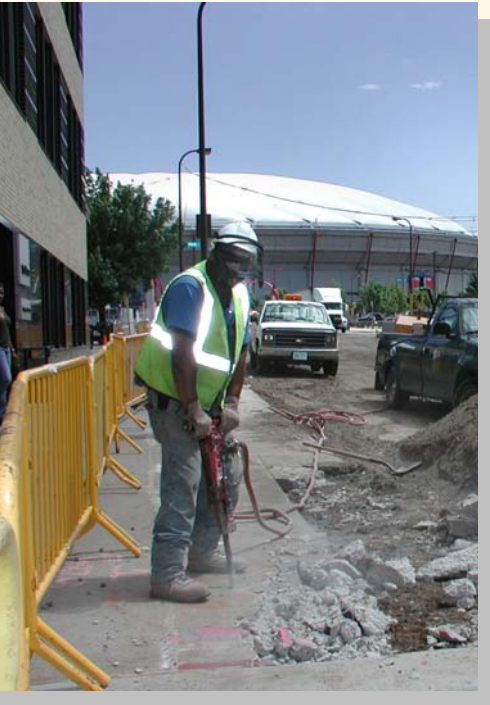


- DBE programs required
 - Any federal highway fund
 - >\$250,000/yr transit or airport funds
- DBE rules and regs
 - 49 CFR Parts 23 & 26
 - Set goals
 - Collect data
 - Account for use of funds
 - Implement program to ensure compliance

3/15/07 GAC

Met Council's DBE Program

Central Corridor Light Rail Transit



- Council's DBE objectives
 - Ensure non-discrimination in federally funded projects
 - Create level playing field
 - Tailor program in accordance with law
 - Ensure participating firms comply with eligibility standards
 - Remove barriers to DBE's

Met Council's DBE Program

Central Corridor Light Rail Transit



- DBE eligibility
 - Socially disadvantaged
 - Economically disadvantaged
- Unified Certification Program used to certify DBE's
- Requires DBE certification not alternative programs
- List of DBE's is available online

http://www.metrocouncil.org/doing_business/overview.htm

Met Council's DBE Program

Central Corridor Light Rail Transit



- DBE goals based on
 - Availability of DBE's
 - Realistic expectations
- 2007 overall goal of 17%
 - Contracts can be more or less
 - Contract goals set if subs are possible
 - Central DBE goals reflect overall goal
- DBE regs apply if fed funds are passed through

Met Council's DBE Central Corridor Plan

Central Corridor Light Rail Transit



- Vision
 - Project provides opportunities for woman & minority-owned and other small disadvantaged firms to participate in project
- Mission
 - Ensure non-discrimination in the award and administration of any and all contracts related to the project

Met Council's DBE Central Corridor Plan

Central Corridor Light Rail Transit



- Goals
 - Non-discrimination
 - Public participation
 - Removal of barriers
 - Technical assistance

Met Council's DBE Program

Central Corridor Light Rail Transit



- Where is the Met Council today?
- What is the Planning Process?
- How does the DBE goal relate to the existing project management consultant request for proposals?
- What about the future ?

Central Corridor Light Rail Transit



Questions?

Central Corridor Light Rail Transit



Metropolitan Council and Corridor Management Committee Report

Arlene McCarthy

Director, Metropolitan Transportation Services

Central Corridor Light Rail Transit



Communication and Public Involvement Strategic Plan

Robin Caufman

Manager of Public Involvement

Mark Fuhrmann

Project Director

Central Corridor Light Rail Transit

Goals



- To develop and maintain broad public support
- To create transparency and build mutual trust
- To encourage meaningful public participation
- To ensure that messages are clear, consistent and responsive

Avenues for Public Involvement

Central Corridor Light Rail Transit



- Community Advisory Committee
- Business Advisory Council
- Public meetings and forums
- Website and telephone comment lines

Key Audiences



- General public
- Elected officials
- Corridor residents
- Corridor businesses
- Transit users
- Community groups
- Business groups
- Educational institutions
- Media

3/15/07 CAC

Central Corridor Light Rail Transit

Stakeholders identified at 2/15/07 CAC

- Airport Users
- Auto Commuters
- Bicycle Riders
- Business Owners
- Children
- Churches & Institutions
- Church-goers
- Community/Neighborhood Residents
- Cultural & Historic Groups
- Customers
- Displaced Homeowners & Business Owners
- Diverse Demographics
- Diverse Groups with Unique Needs
- Drivers
- Elderly
- Employees
- Employers
- ESL & ELL Groups
- Environmental Justice Communities
- Escorted School Groups
- Faculty
- Families
- Gentrification
- Home Owners & Renters with rising costs
- Homeowners
- Immigrants
- Job Seekers/Commuters
- Large Business Owners
- Low Income Residents
- Low Income Riders
- Non-English Speakers
- Parking Facility Owners
- Pedestrian Commuters
- Pedestrians
- People Living in Poverty
- People with Disabilities
- Police
- Professionals
- Residents
- Seniors
- Shoppers
- Small Business Owner
- State Employees
- Students
- Teenagers
- Tourists/Visitors
- Transit Dependent People
- Transit Users
- Travelers with Luggage
- Users of University Avenue and Cross Traffic
- Workers
- Youth

Action Plan Includes



- Web pages with project description, map, timeline, links, agenda, & meeting notices
- Brochures, fact sheets, PowerPoint presentation,
- Newspaper articles and cable TV
- *Making Tracks* newsletter providing project updates
- E-mail and telephone hotlines for public input

3/13/07 CAC

Central Corridor Light Rail Transit

Communication Techniques Identified at 2/15/07 CAC

- Audio tapes
- Being open – provide detailed information
- Billboards
- Black Groups
- Block Club Communication
- Braille
- Business groups and organizations
- Cable Access
- Chambers of Commerce
- Churches
- Communication with different means
- Community Centers
- Community Leaders
- Community Meetings
- Cultural and Historic Groups
- Direct Mail
- District Councils
- Door-knocking
- Ethnic Newspapers
- Face-to-face at Shelters
- Healing Process (Rondo)
- Hub Centers
- Immigrants groups
- Leaflets and Door Hangers to residents
- Libraries
- LIR-District Councils
- Neighborhood groups and newsletters
- Neighborhood Newspapers
- News Channels
- Newsletters
- Non-profit Institutions
- Non-profit Sector
- NRP
- One-on-one contact
- Oral (important in certain cultures)
- Organizations such as Headstart and YWCA
- Personal Visits, especially to seniors
- Posters in Bus Shelters
- Problem – too many meetings – overload
- Radio Shows – KFAI for elders and E. African Community
- Small Business Associations (SBO)
- Social Service Organizations
- Sporting Events
- State Fair
- Students – internet, e-mail
- TV
- Visual Presentations
- Working through trust issues
- Written (all languages when possible)
- Written material through case workers

3/15/07 CAC

Public Involvement Timeline

Central Corridor Light Rail Transit



May

- Hire Project Management Consultant

June-Aug

- Start technical analysis

Aug-Nov

- Complete technical work
- Present to CAC, BAC, CCMC
- Hold public meetings

Nov-Dec

- Report to the CCMC
- Present recommendation
 - Transportation Cmte

Level of Public Involvement



- Will vary depending on the issue
- Each decision will be assigned a level
 - Inform
 - Input
 - Influence

Level of Public Involvement

Central Corridor Light Rail Transit



- Inform
 - Definition: Present technical information and analysis to the public
 - Objective: Assist the public in understanding the issues, alternatives and solutions
 - Example: Utilities

Level of Public Involvement

Central Corridor Light Rail Transit



- Input
 - Definition: Ask the public for information about different aspects of the project
 - Objective: Understand public concerns as project is engineered and designed
 - Example: Parking

Level of Public Involvement

Central Corridor Light Rail Transit



- Influence
 - Level: Public included in the development of alternatives and selection of the preferred solution
 - Objective: Community reflected in Central Corridor LRT project
 - Example: Station design

By 12/31/07 General



- Capacity
 - 2 or 3 car trains/platforms **Inform**
 - Maintenance facility & storage **Inform**
- Traffic Signals & intersections **Inform**
- Utilities **Inform**

By 12/31/07 St. Paul

Central Corridor Light Rail Transit



- University Ave. **Input**
- Add/reduce # of stations **Input**
- Downtown St. Paul alignment **Input**
- Railroad & other bridges **Inform**

By 12/31/07 Minneapolis



- U of M East Bank Alignment & Station **Input**
- Connection w/ Hiawatha **Inform**
- West Bank Station **Input**
- Washington Ave. bridge **Inform**

Central Corridor Light Rail Transit

In 2008



- Parking **Input**
- Station
 - Design **Influence**
 - ADA Access **Influence**
- ROW for substations & infrastructure **Inform**
- Construction mitigation plans **Input**

3/15/07 CAC

Central Corridor Light Rail Transit



Business Advisory Council Report

Karri Plowman

Director, Central Corridor Partnership

Central Corridor Light Rail Transit

More Information

Check out our website:

- www.metrocouncil.org

Contact the Data Center:

- Metropolitan Council
390 N. Robert St.
St. Paul, MN 55101
- Phone: 651-602-1140
- Email: data.center@metc.state.mn.us



Central Corridor Light Rail Transit



Metropolitan Council's Disadvantaged Business Enterprise (DBE) Program

Wanda Kirkpatrick
Director, Office of Diversity

Overview of Federal DBE Program

Central Corridor Light Rail Transit



- DBE programs required
 - Any federal highway fund
 - >\$250,000/yr transit or airport funds
- DBE rules and regs
 - 49 CFR Parts 23 & 26
 - Set goals
 - Collect data
 - Account for use of funds
 - Implement program to ensure compliance

Met Council's DBE Program

Central Corridor
Light Rail Transit



- Council's DBE objectives
 - Ensure non-discrimination in federally funded projects
 - Create level playing field
 - Tailor program in accordance with law
 - Ensure participating firms comply with eligibility standards
 - Remove barriers to DBE's

Met Council's DBE Program

Central Corridor Light Rail Transit



- DBE eligibility
 - Socially disadvantaged
 - Economically disadvantaged
- Unified Certification Program used to certify DBE's
- Requires DBE certification not alternative programs
- List of DBE's is available online

http://www.metrocouncil.org/doing_business/overview.htm

Met Council's DBE Program

Central Corridor Light Rail Transit



- DBE goals based on
 - Availability of DBE's
 - Realistic expectations
- 2007 overall goal of 17%
 - Contracts can be more or less
 - Contract goals set if subs are possible
 - Central DBE goals reflect overall goal
- DBE regs apply if fed funds are passed through

Central Corridor Light Rail Transit

Met Council's DBE Central Corridor Plan



- Vision
 - Project provides opportunities for woman & minority-owned and other small disadvantaged firms to participate in project
- Mission
 - Ensure non-discrimination in the award and administration of any and all contracts related to the project

Central Corridor Light Rail Transit

Met Council's DBE Central Corridor Plan



- Goals
 - Non-discrimination
 - Public participation
 - Removal of barriers
 - Technical assistance

Met Council's DBE Program

Central Corridor
Light Rail Transit



- Where is the Met Council today?
- What is the Planning Process?
- How does the DBE goal relate to the existing project management consultant request for proposals?
- What about the future ?