

# Central Corridor Light Rail Transit

**Community Advisory Committee**

January 18, 2007



*Improving  
mobility*

*Easing  
congestion*

*Strengthening  
our communities*

# Today's Agenda

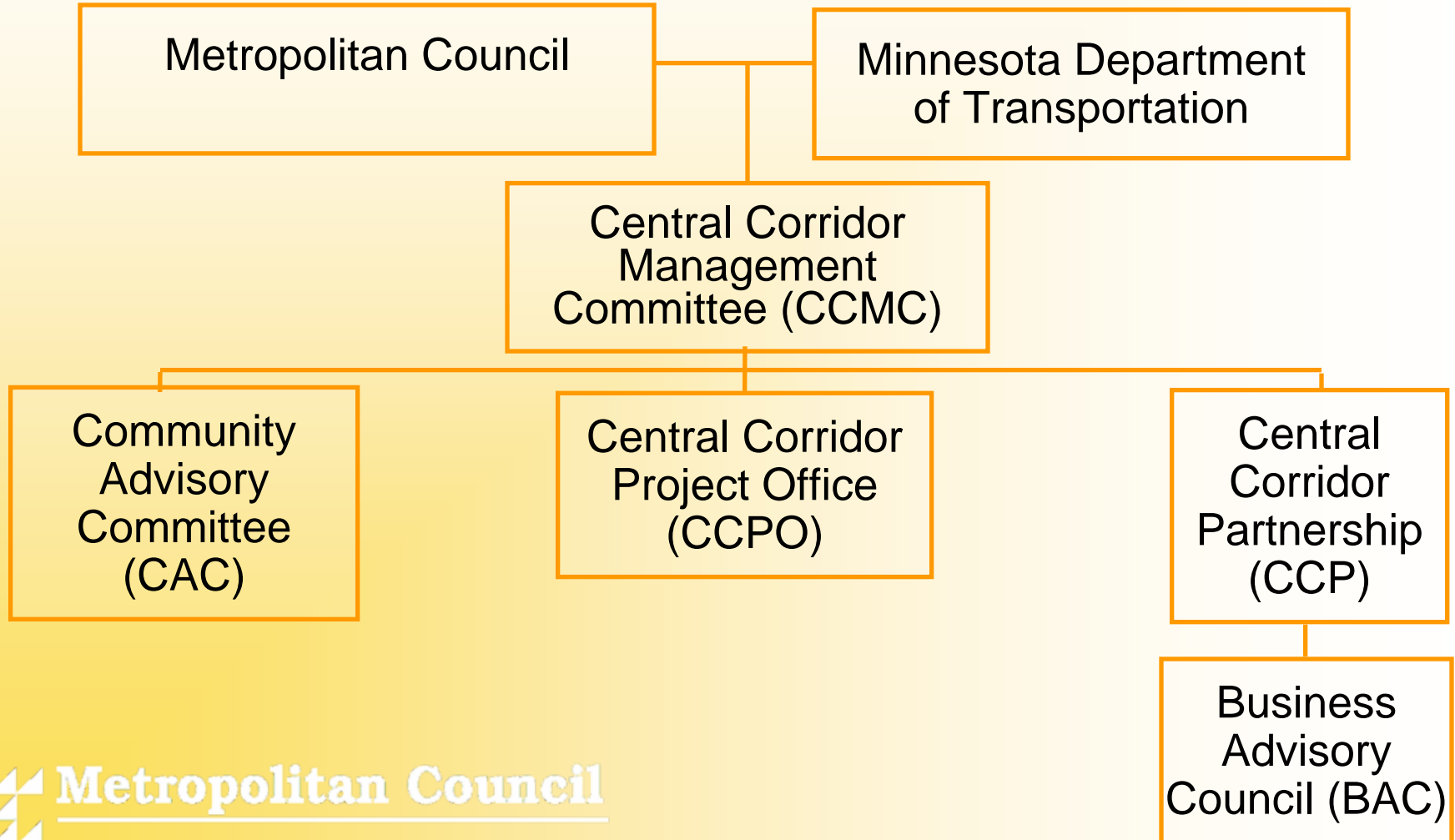


- **Introductions**
- CAC Charter
- Overview of the Central Corridor LRT project
- Central Corridor Management Committee Report

# Today's Agenda



- Introductions
- **CAC Charter**
- Overview of the Central Corridor LRT project
- Central Corridor Management Committee report



# Roles and Responsibilities



- Advise Corridor Management Committee on key issues
- Facilitate public participation
- Provide feedback to the project

## What to expect



- Not revisiting past decisions
  - Alignment & mode
- Need to meet federal guidelines
- Initial series of discussions
  - U of M & St. Paul alignments
  - Level of road reconstruction
- Second series of discussions
  - Station placement & design
  - Parking issues
  - Construction impact mitigation

# Today's Agenda



- Introductions
- CAC Charter
- **Overview of the Central Corridor LRT project**
- Central Corridor Management Committee Report

## What is LRT?



- LRT = Light rail transit
- High capacity
- Fast acceleration & braking
- Electricity powered
- Quiet operation
- Frequent service 21 hours/day
- Stops every ½ - 1 mile

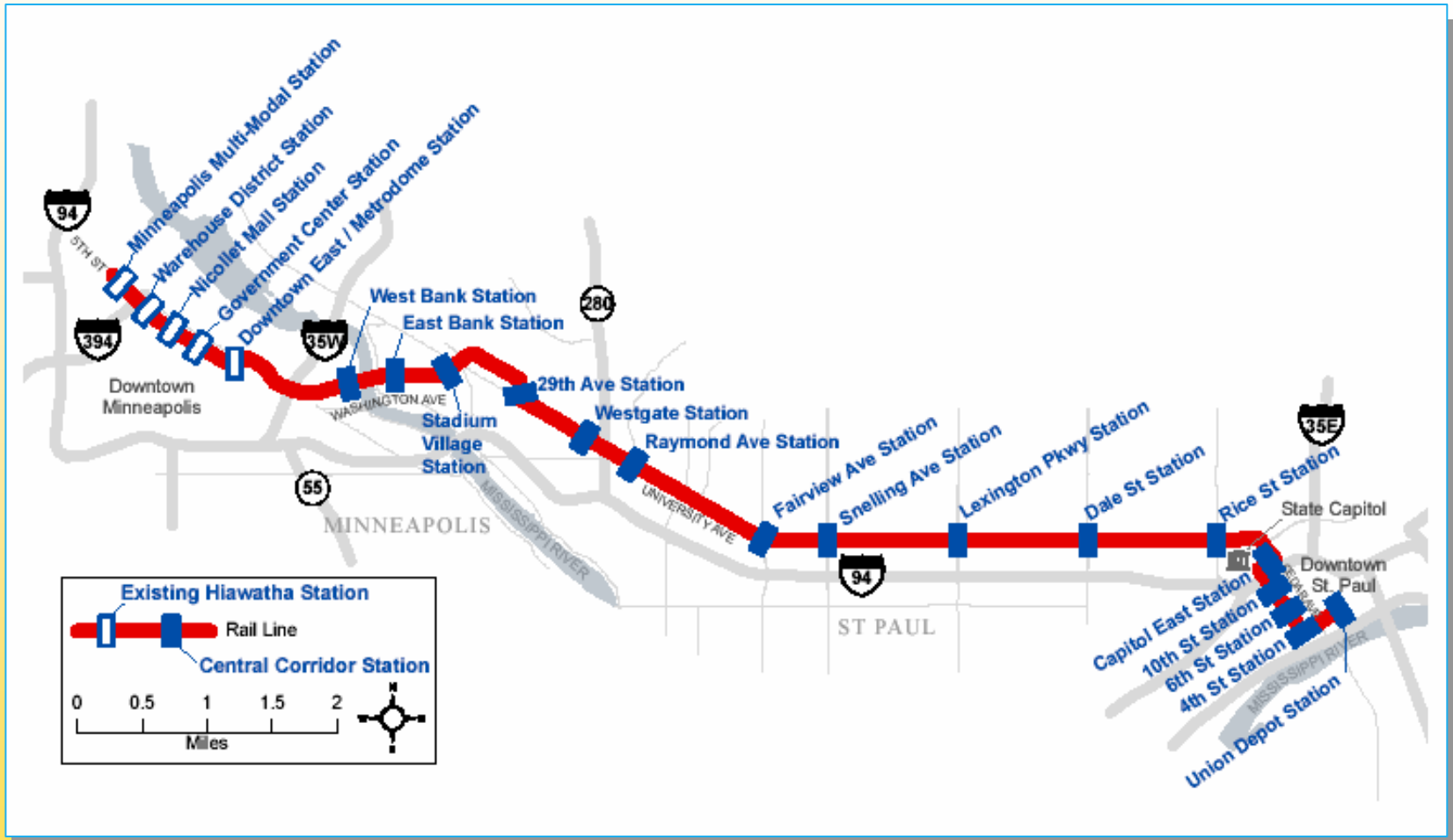
# Hiawatha LRT Success Stories



- Exceeding expectations
  - 28,100 ave. weekday riders
  - Exceeds year 2020 projections
  - 40% of riders new transit users
- Outstanding safety record
- Supporting development
  - 5,400 new housing units constructed
  - 7,000 more in planning stages

# Central Corridor Light Rail Transit

# Route

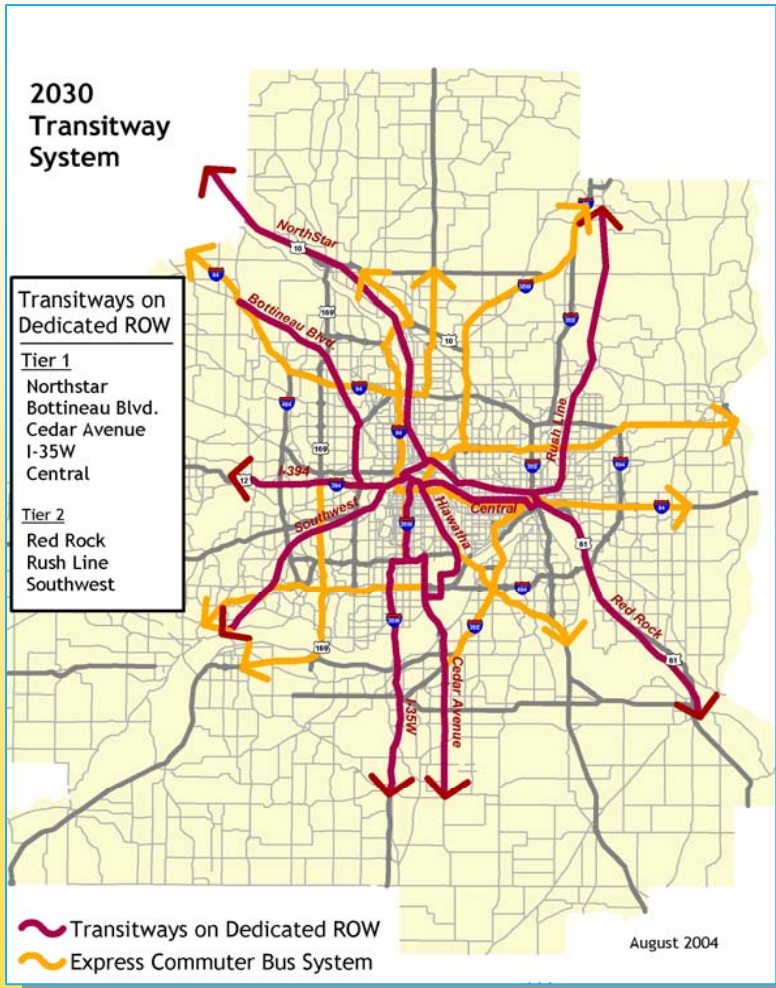


Alignment and stations as shown in the Draft Environmental Impact Statement dated April 3, 2006

## Central Corridor Light Rail Transit

# Regional Transit System

- Important link in the regional transit network
  - Transitways
  - Bus network



## Operations



- 35 minutes from downtown to downtown
- 7 ½ minutes between trains during peak periods
- 31 vehicles
- 135 people per vehicle
- Projected weekday riders
  - 38,100 by 2020
  - 43,270 by 2030

## Central Corridor Light Rail Transit

# Timeline Completed Steps



Complete

Draft Environmental  
Impact Statement  
(DEIS)

Complete

Alignment Selected:  
**Washington/  
University**

Complete

Mode Selected:  
**Light Rail Transit**

## Central Corridor Light Rail Transit

# Timeline Next Steps



2007 - 2008:

Preliminary  
Engineering (PE)

2009:

Enter Final Design  
and Apply for  
Federal Funding

2010 - 2013:

Construction

2014:

Operation

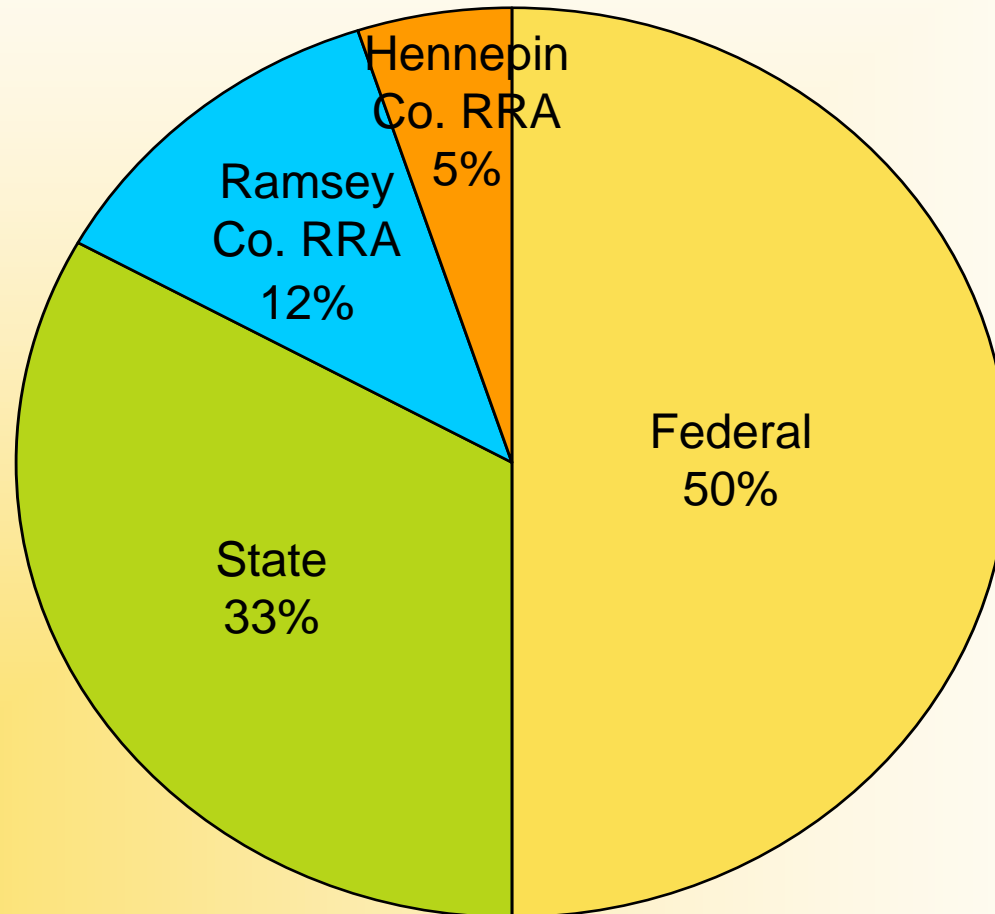
# Preliminary Engineering



- Make decisions about the scope of the project
- Refine sources and uses of funds
- Meet Federal Cost Effectiveness Index (CEI) guidelines

Central Corridor  
**Light Rail Transit**

# Sources of Capital Funds



## Central Corridor Light Rail Transit

# FTA Cost Effectiveness Index



$$\text{CEI} = \frac{\text{Annualized capital and operating costs}}{\text{Annual travel time savings}}$$

## Central Corridor Light Rail Transit

# CEI Ratings Needed to Advance Projects



Enter Preliminary Engineering  $\leq$  \$28.99

Enter Final Design  $\leq$  \$28.99

Secure Full Funding Grant  $\leq$  \$22.99

# Cost Effectiveness for Peer LRT Projects

Central Corridor  
**Light Rail Transit**

Preliminary Engineering

<b>Peer Project</b>	<b>Rating</b>	<b>CEI</b>
• Sacramento South	Medium-High	\$13.59
• Seattle University	Medium	\$19.93
• Norfolk	Medium	\$21.66
• Houston North	Medium-Low	\$23.80
• Houston South	Medium-Low	\$24.31

**Central Corridor  
Light Rail Transit**

Included in current cost est.

# Initial Series of Discussions

<b>Project Component</b>	<b>Est. Cost</b>
University East Bank Tunnel	\$155M
St. Paul Fourth St. to Union Depot	\$ 72M
University Ave. Reconstruction	\$ 55M

## Central Corridor Light Rail Transit

Potential additions to scope & cost

# Initial Series of Discussions

<b>Project Component</b>	<b>Est. Cost</b>
Additional Light Rail Vehicles (LRV)	\$39M
3 LRV Capacity Platforms	\$16M
LRV Storage Facility	\$24M
Traction Power Capacity	\$14M
Revised Inflation Rate	TBD

## Central Corridor Light Rail Transit

# Second Series of Discussions

## Community Concerns



- Station placement and design
- Accessibility
- Traffic signals and intersections
- Construction impacts mitigation
- Parking
- CAC identified issues

# Today's Agenda



- Introductions
- CAC Charter
- Overview of the Central Corridor LRT project
- **Central Corridor Management Committee Report**

# Corridor Management Committee



- Federal Transit Admin. “New Starts” program
- Funding and financing
- Cities land use planning activities
- UofM developments & preferred alignment
- Transportation demand modeling

## More Information

Check out our website:

- [www.metrocouncil.org](http://www.metrocouncil.org)

Contact the Data Center:

- Metropolitan Council  
390 N. Robert St.  
St. Paul, MN 55101
- Phone: 651-602-1140
- Email: [data.center@metc.state.mn.us](mailto:data.center@metc.state.mn.us)

