

Central Corridor Light Rail Transit

BAC

June 15, 2009



*Improving
mobility*

*Easing
congestion*

*Strengthening
our communities*

Today's Topics

- Project Update
- Access during construction
- Communication during construction



Project Schedule

June 26

- Publish FEIS

July 27

- Public review period ends

Aug. 19

- FTA issues Record of Decision

Aug. 20

- FTA approves Letter of No Prejudice for advanced utility relocation

Aug. 31

- CCPO issues Notice to Proceed to 4th St. contractor

Central Corridor Light Rail Transit



Access During Construction

Access During Construction Overview



- Pedestrian access
 - Employees
 - Customers
 - Residential
- Vehicular access
 - Garbage pickup
 - Deliveries
 - Parking lots

Access During Construction Overview



- Typical strategies for maintaining access
 - Phase sidewalk construction
 - Provide portable bridges
 - Provide directional signage
 - Use alley for deliveries, refuse pick up
 - Purchase temporary easements
 - Remove obstructions or provide minor grading to alley access



Barriers provide pedestrian protection



Portable walkways provides access





Access During Construction



- Competing objectives
 - Keep traffic flowing
 - Provide property access
- Two examples of access issues when construction is directly in front of business or property
 - University Avenue
 - Downtown St. Paul, Cedar Street

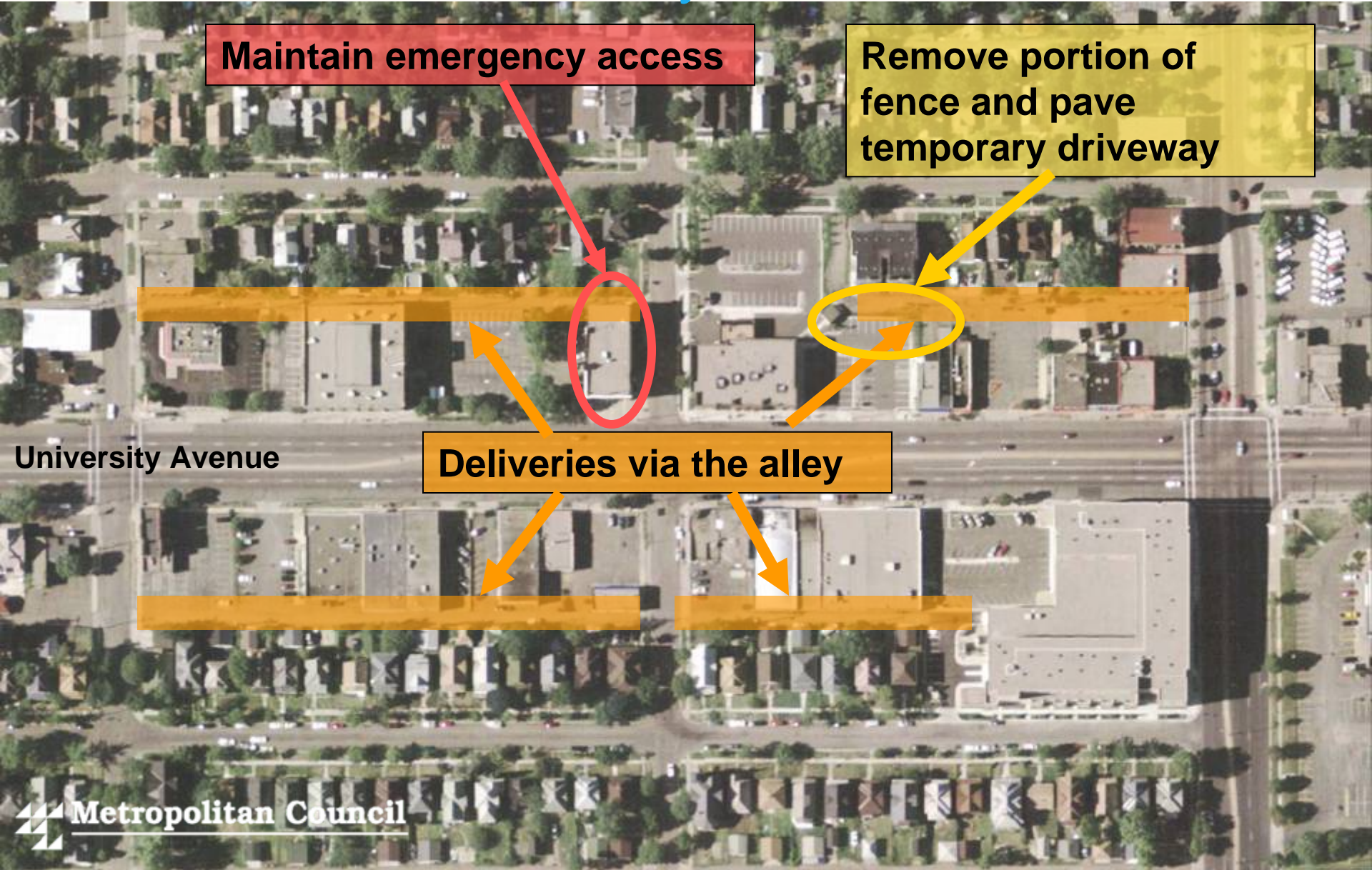
Example Access During Construction University Avenue

Maintain emergency access

Remove portion of fence and pave temporary driveway

Deliveries via the alley

University Avenue



Example Access During Construction

Remove Fencing, Grade for Alley Access



Remove portion of fence, grade, and pave temporary driveway

Example Access During Construction

Remove Obstructions to Alley Access



Remove portion of fence and pave temporary driveway

Example Access During Construction

Use Alley for Deliveries, Refuse Pickup



Example Access During Construction

Maintain Emergency Access

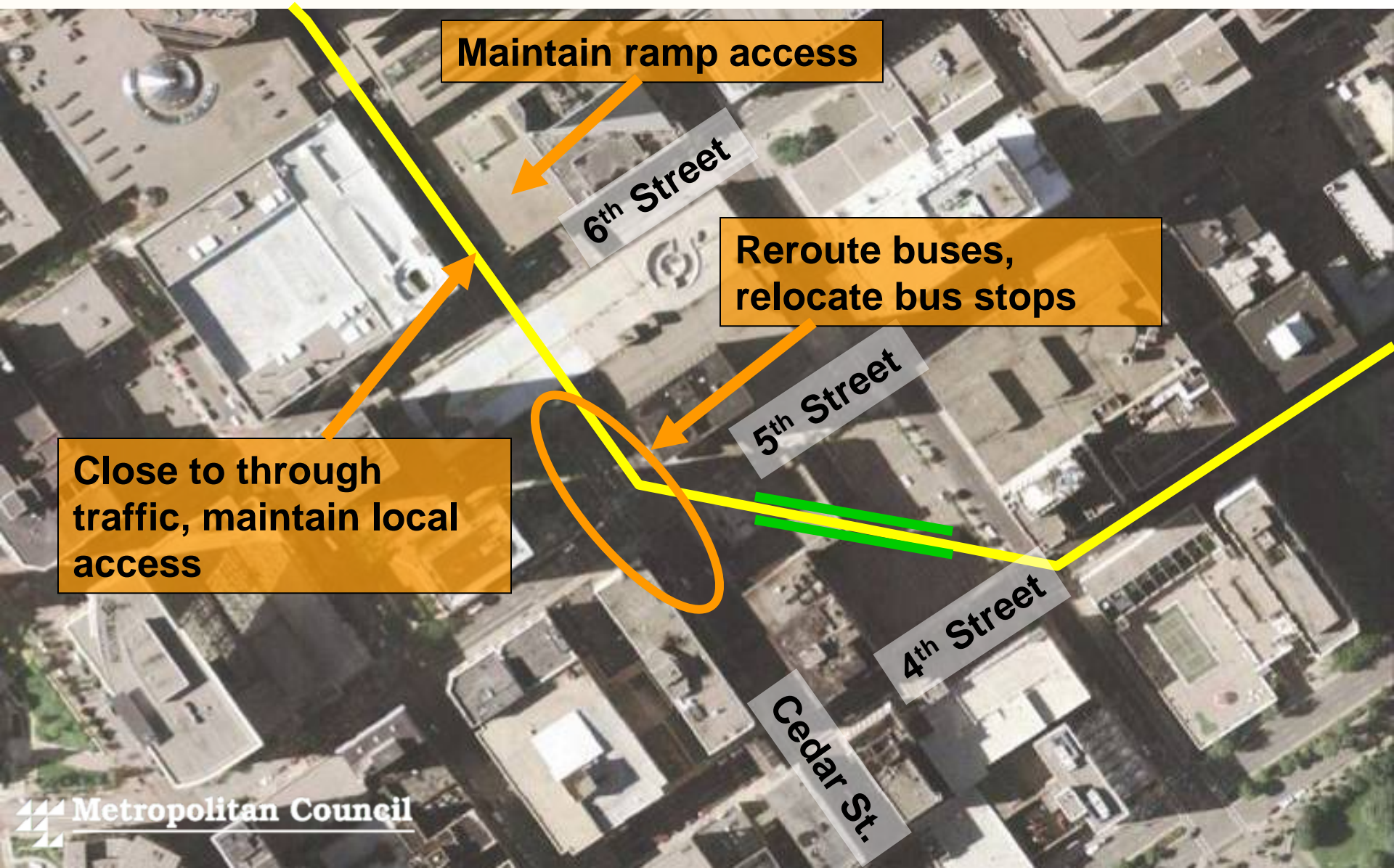


Example Access During Construction Maintain Bus Service



Example Access During Construction

Downtown St. Paul



Maintain ramp access

6th Street

Reroute buses, relocate bus stops

5th Street

Close to through traffic, maintain local access

4th Street

Cedar St.

Example Access During Construction

Close to Through Traffic, Maintain Local Access



Example Access During Construction Reroute Buses & Remove Street Parking



Example Access During Construction

Maintain Pedestrian Access to Entrances



Example Access During Construction

Maintain Ramp Access



Central Corridor Light Rail Transit



Communication During Construction

Met Council Outreach Plan

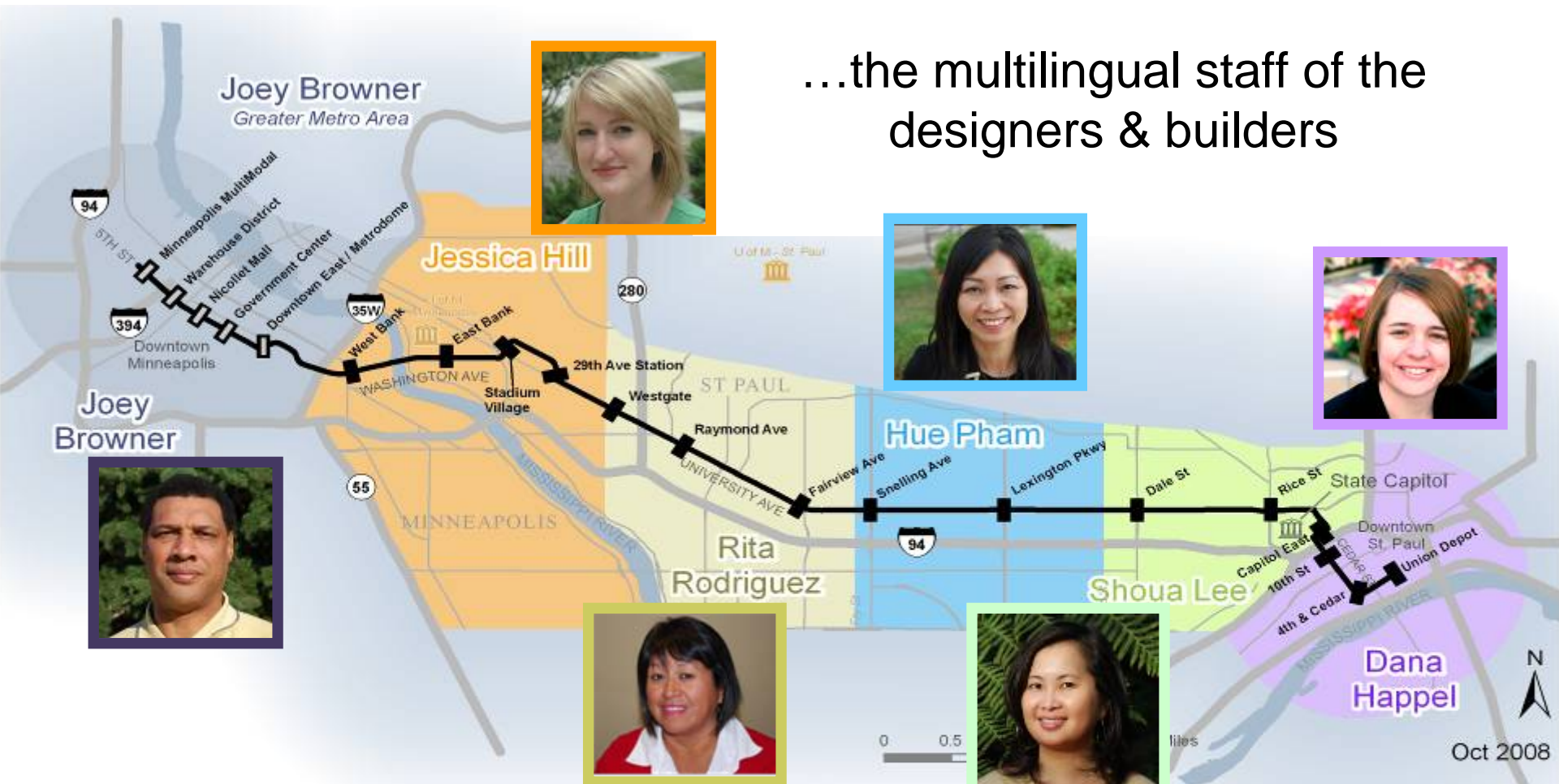
Central Corridor Light Rail Transit



- Met Council staff lead on outreach and communication efforts
- Community outreach coordinators assigned to work with 2-mile segment
 - Businesses and property owners
 - Residents
 - Stakeholders

Your source for Central Corridor Light Rail Transit information...

...the multilingual staff of the designers & builders



Joey Browner
Downtown Minneapolis and Greater Metro area
651-602-1953
joey.browner@metc.state.mn.us

Jessica Hill
29th Ave, Stadium Village, East Bank, West Bank
U of M Campuses - Minneapolis & St Paul
651-602-1840
jessica.hill@metc.state.mn.us

Rita Rodriguez
Fairview, Raymond, and Westgate
651-602-1805
rita.rodriguez@metc.state.mn.us

Hue Pham
Snelling and Lexington
651-602-1559
hue.pham@metc.state.mn.us

Shoua Lee
Dale, Rice, and Capitol East
651-602-1014
shoua.lee@metc.state.mn.us

Dana Happel
Downtown St. Paul
651-602-1954
dana.happel@metc.state.mn.us



- Hotline
- Complaint forms
- Public meetings
- Construction tours
- District Council updates
- Media
- Website
- Weekly newsletter

Construction Communication Coordinating Cmte



- CCPO outreach coordinator
- CCPO construction staff
- CCPO engineering staff
- Contractor point person
- City public works designee
- County public works designee
- UofM transportation designee

Contractors Role in Outreach Plan



- Contractor outreach point person
 - Support CCPO outreach activities
 - Communicate project details
 - Commit to action, respond to concerns
 - Participate in meetings
 - Internal communication coordinating
 - Public construction updates
 - Provide adequate access
 - Provide and maintain signage

Notifications



- 30-day construction notice, schedule
- Weekly construction updates
- 72-hour notice for road, driveway closures
- Notice for utility shut off
 - 72-hours for businesses
 - 48-hours for residents
- Emergencies, as needed

More Information

Check out our website:

- www.centralcorridor.org

Contact Central Corridor Project Office:

- 540 Fairview Avenue North
St. Paul, MN 55104
- Comment Line: 651-602-1645
- Email: centralcorridor@metc.state.mn.us

