

Central Corridor Light Rail Transit

Business Advisory Council

May 18, 2009



*Improving
mobility*

*Easing
congestion*

*Strengthening
our communities*

Today's Agenda

- Review meetings minutes
- Station design
- Public art concepts
- Business mitigation discussion



Central Corridor Light Rail Transit



FTA 2010 New Starts Report

New Starts Rating

	<u>2008</u>	<u>2010</u>
Overall	Medium	Medium-High
Local Financial Commitment	Medium	Medium
Project Justification	Medium	Medium-High

Central Corridor Light Rail Transit



Station Design

Station Design Update

Central Corridor Light Rail Transit



- Stations have consistent footprint
- Primary materials include copper, concrete, steel, brick, and metal
- Color and material of certain elements can vary from station to station, and can be influenced by station artwork design

Station Design Update

- Cost updated in April 2009, remains within project budget
- Adjustment to canopy design possible by third party as “betterment”



Side Platform Station



Split Side Platform



Center Platform Station



Street Side and Entry



Standard Design Options

Brick, Precast, Metal, Color



Central Corridor Light Rail Transit



Public Art Concepts

Public Art Design Background

Central Corridor Light Rail Transit



- Five artists assigned three stations each
- Each station - unique elements to reflect community
- \$2.8 million budgeted for all stations
 - \$187,000 per station

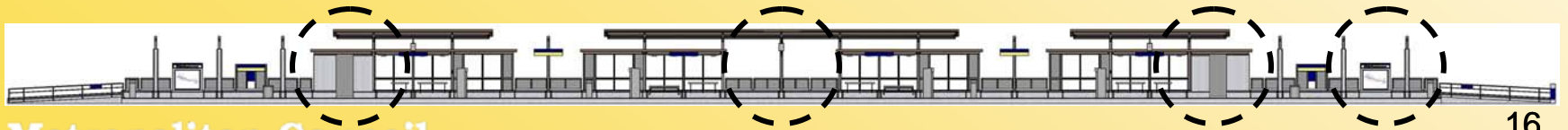
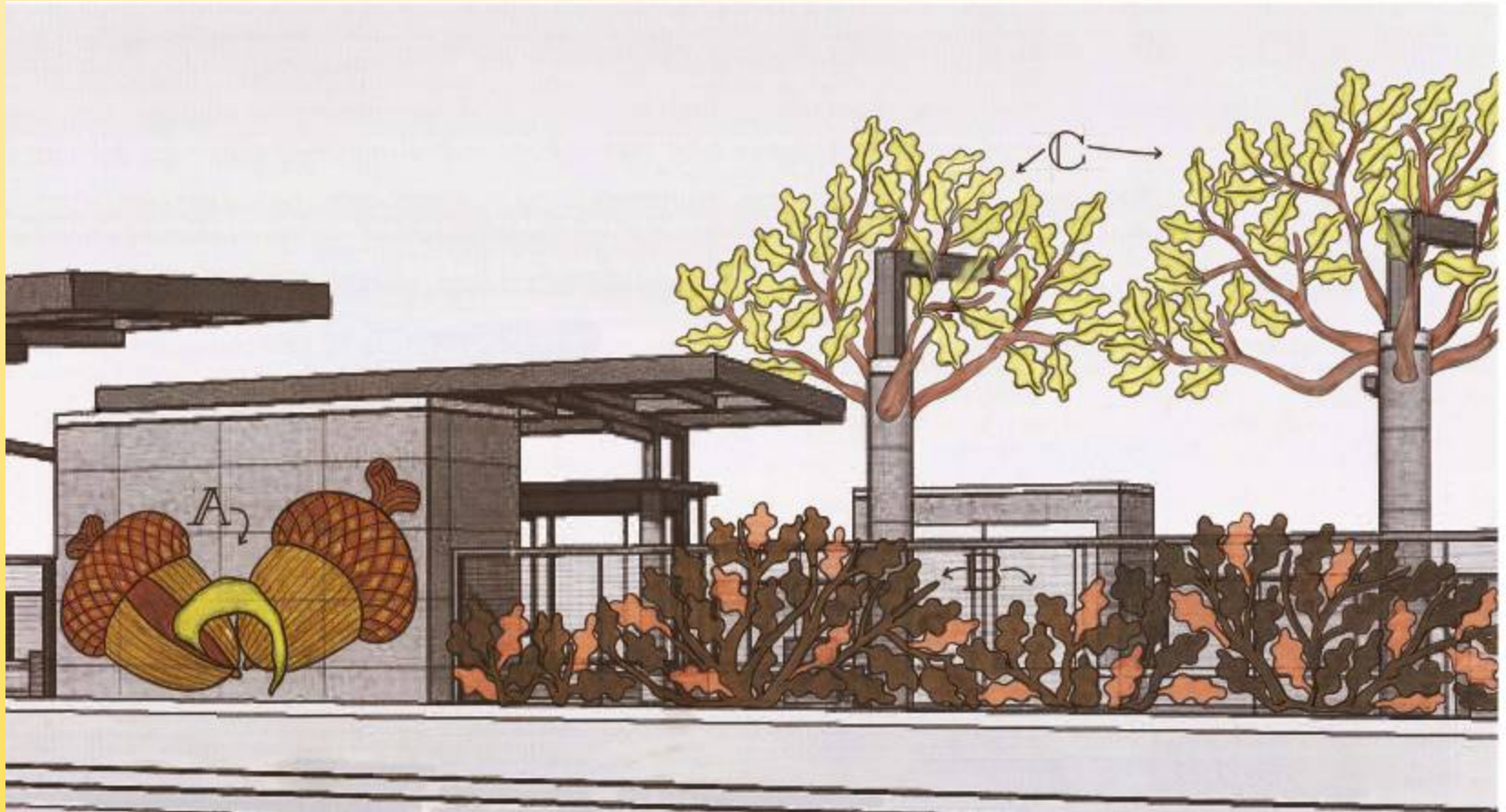
Nancy Blum Stations



Nancy Blum

- West Bank
- East Bank
- Fairview

Nancy Blum Concept



Roberto Delgado Stations



Roberto Delgado

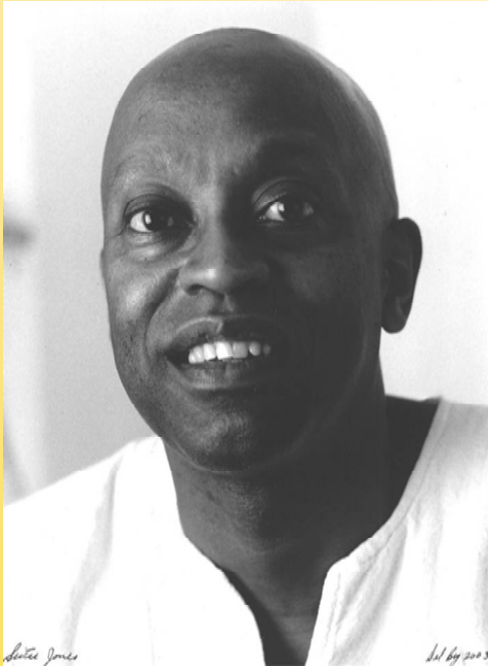
- Stadium Village
- Snelling Avenue
- 4th Street and Cedar Street

Roberto Delgado Concept

Integrated Public Art for the Central Corridor Light Rail Stations - Roberto L. Delgado



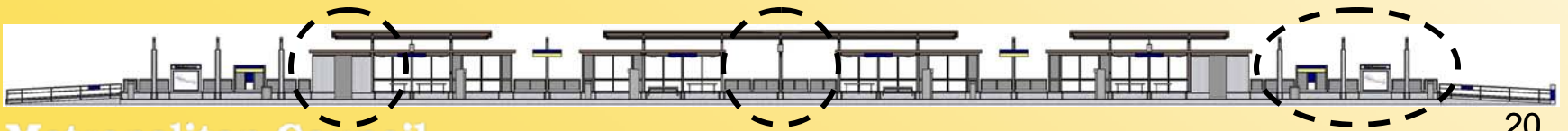
Seitu Jones Stations



Seitu Jones

- Lexington Parkway
- Dale Street
- Rice Street

Seitu Jones Concept



Janet Lofquist Stations



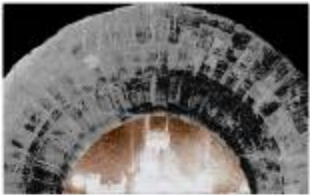
Janet Lofquist

- 29th Avenue
- Capitol East
- 10th Street

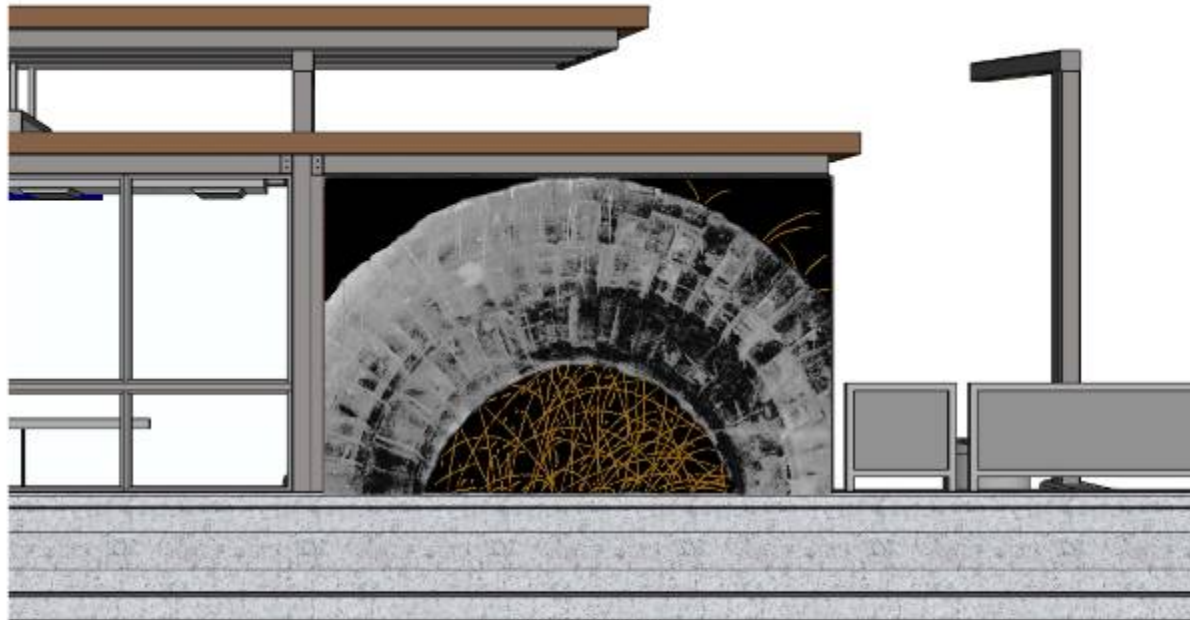
Janet Lofquist Concept



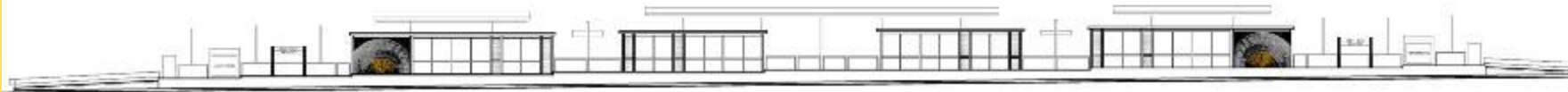
1907 Ice Palace arch
Minnesota Historical Society



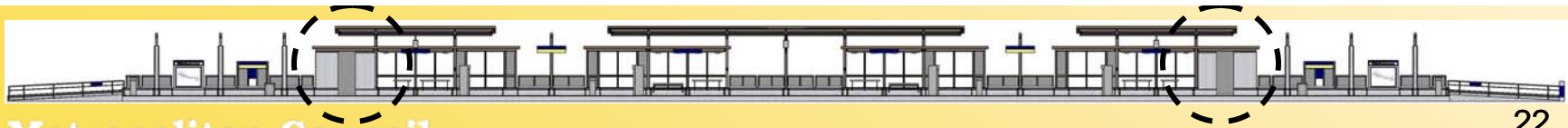
Ice Palace with fireworks



concept to be realized in metals



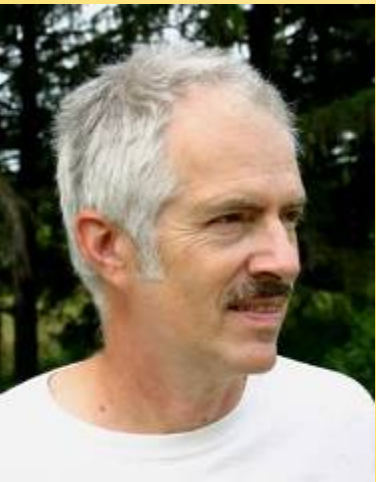
we often try to create a sense of continuity and design of the destination. For a bill and red it was going green against the white sky, used twice in color. It was the stone in the sky with the trees and benches and the concrete structure. The arches were made of metal and the concrete structure. The arches were made of metal and the concrete structure. The arches were made of metal and the concrete structure. From the Ice Palace by P. Scott



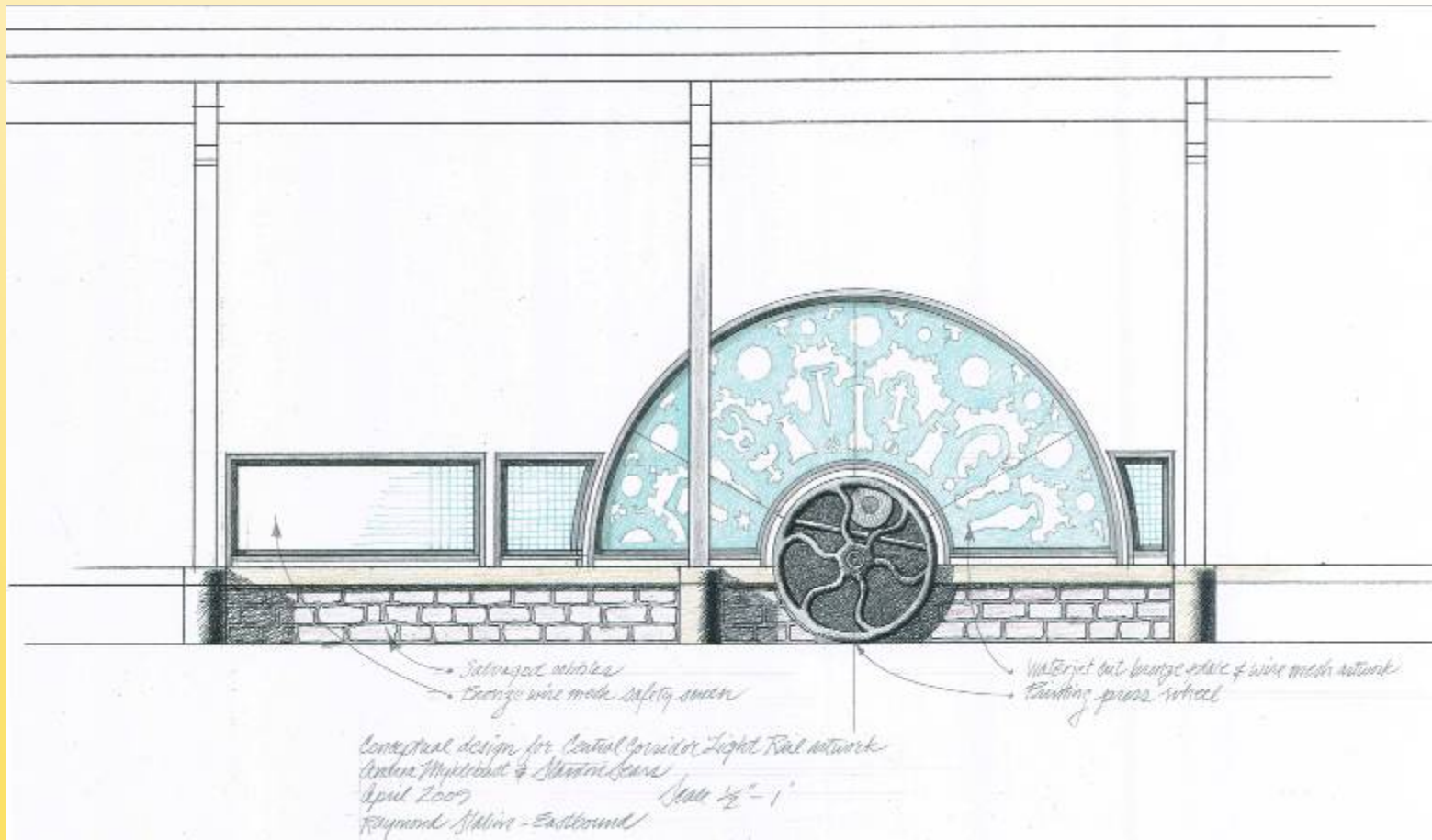
Myklebust+Sears Stations



- Westgate
- Raymond
- Union Depot



Myklebust+Sears Studio Concept



Public Art Process

January

- Create station art committees and hold orientation session

March

- Hold visioning sessions

April

- Artist develops concepts

May-June

- Present concepts to public, CCMC and Met Council

July-Aug

- Present final plans to public
- Seek Met Council approval of preliminary design

Sept-Dec

- Artists advance design

More Information

Check out our website:

- www.centralcorridor.org

Contact Central Corridor Project Office:

- 540 Fairview Avenue North
St. Paul, MN 55104
- Comment Line: 651-602-1645
- Email: centralcorridor@metc.state.mn.us

