

Central Corridor Light Rail Transit

Business Advisory Council

March 16, 2009



*Improving
mobility*

*Easing
congestion*

*Strengthening
our communities*

Today's Agenda



- Updates
 - Public art
 - TPSS and Signal Bungalow
 - OMF layout
 - 4th Street alignment and cross section
- DBE Plan

Public Art Process

January

- Create station art committees and hold orientation session

March

- Hold visioning sessions

April

- Artist develops concepts

May-June

- Present concepts to public, CCMC and Met Council

July

- Present final plans to public
- Met Council approves concept plans

Sept-Dec

- Artists conduct final design

Central Corridor Light Rail Transit



Traction Power Substations and Signal Bungalow

Traction Power Substations (TPSS)

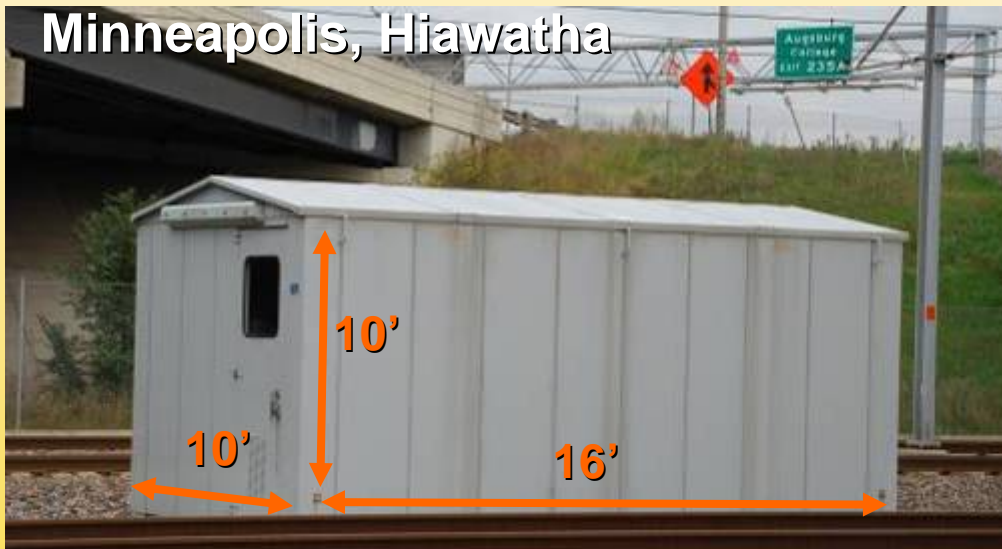


- Convert electricity to power the train
- Placement criteria
 - Within 500' of track
 - Maintenance access
 - Regular spacing about 1 mile apart

Signal Bungalows

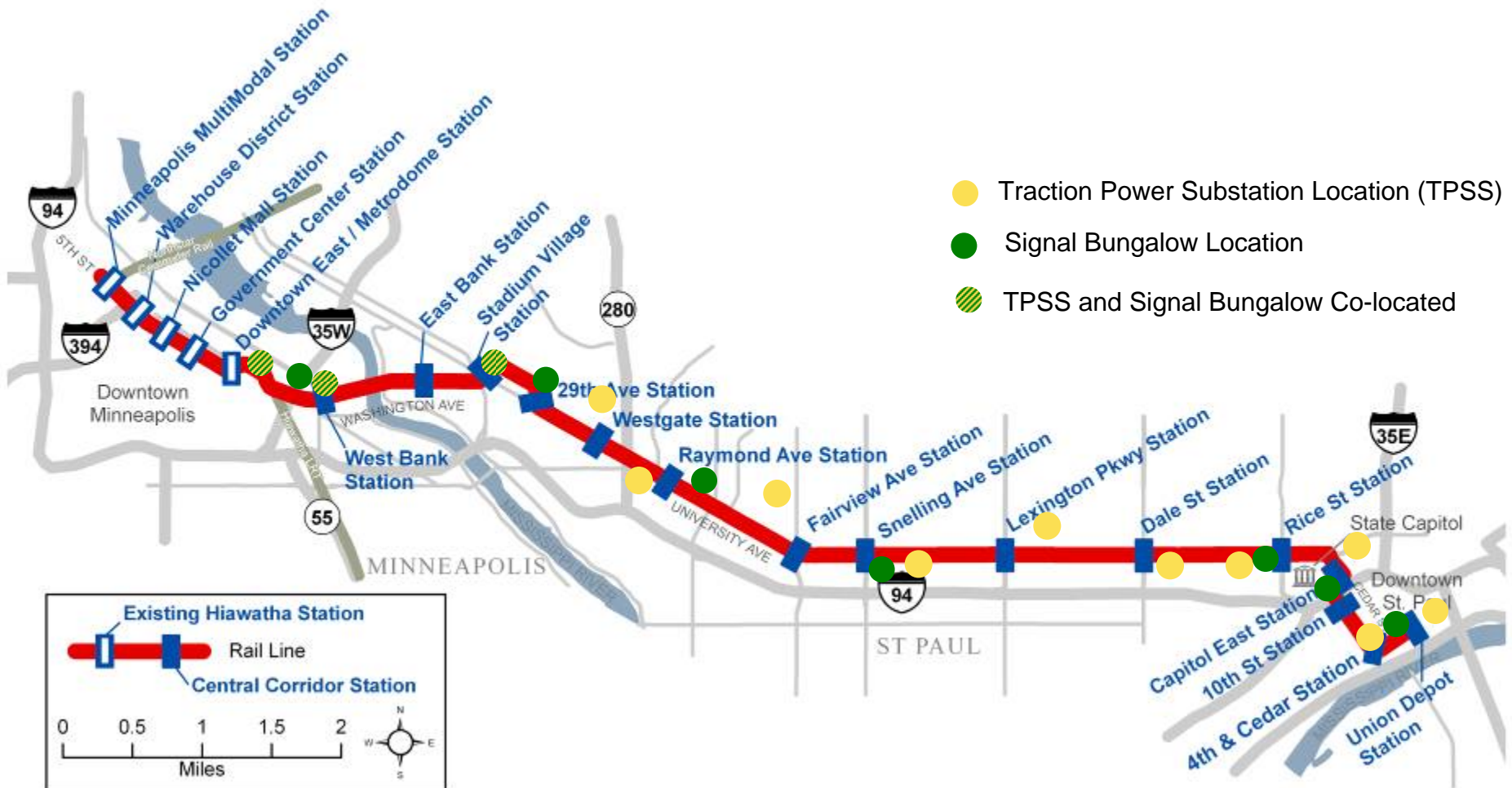
- House communications equipment
- Place near special trackwork

Minneapolis, Hiawatha



Central Corridor Light Rail Transit

TPSS and Signal Bungalow Locations



TPSS and Signal Bungalow Public Input

Central Corridor Light Rail Transit



- Met with community to review proposed locations
 - Six St. Paul District Councils
 - Minneapolis neighborhood groups
- Relocated based on feedback
- Working on specific location of Hamline and Dale St. substations to minimize impacts

Signal Bungalow: Washington & Cedar



Basis for site selection

- County right of way property
- Partially obscured by Cedar Ave bridge

Existing adjacent land use

- 2-5 story MF housing
- Retail/housing mixed-use



TPSS 5: Raymond and Myrtle



Basis for site selection

- Industrial Area
- Accessible
- ~ 500 feet from rail alignment

Existing adjacent land use

- Mixed commercial
- Light industrial
- Heavy industrial
- Tractor-trailer parking



Signal Bungalow: Pillsbury



Basis for site selection

- Proximity to special trackwork
- Accessible

Existing adjacent land use

- Underutilized surface parking
- Mixed commercial
- Light industrial
- Low rise office



Signal Bungalow: University & East of Marion



Basis for site selection

- Proximity to special trackwork
- Accessible

Existing adjacent land use

- Single story retail
- 2-4 story commercial



Signal Bungalow: Sibley Ramp



Basis for site selection

- Proximity to special trackwork
- Accessible

Existing adjacent land use

- Parking Ramp



TPSS 13/14: OMF



Basis for site selection

- Proximity to special trackwork
- Accessible

Existing adjacent land use

- Surface parking



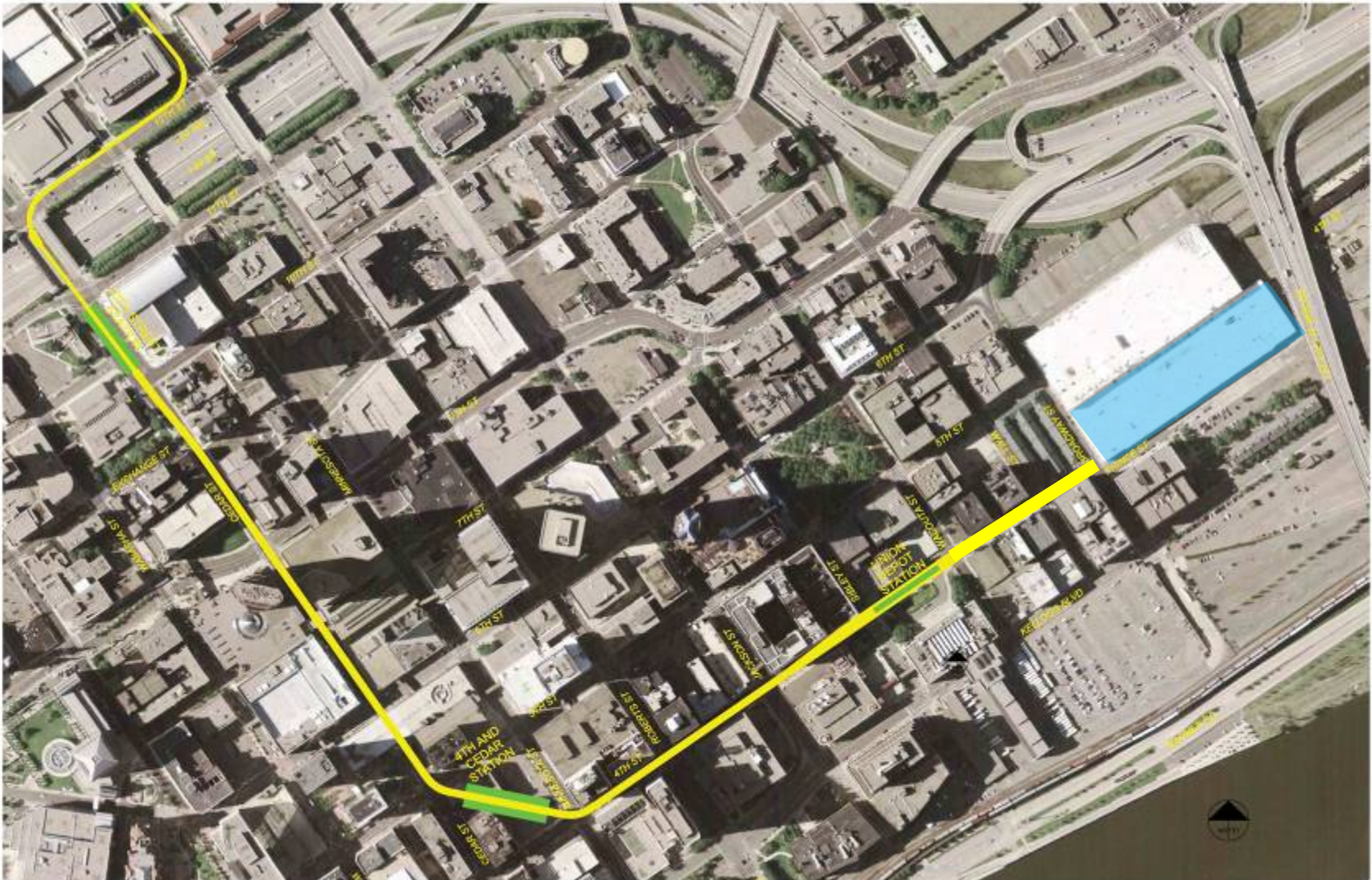
Central Corridor Light Rail Transit



Operations and Maintenance Facility

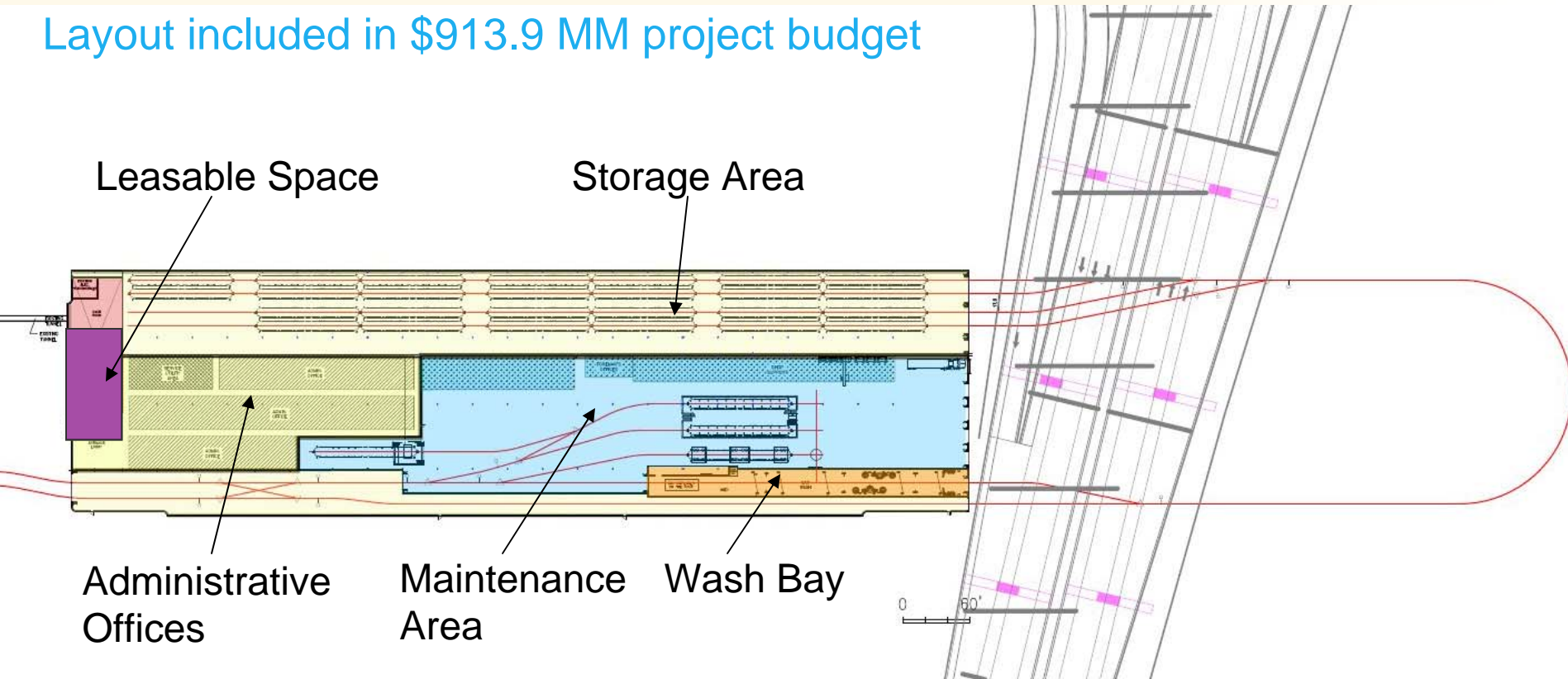
Central Corridor Light Rail Transit

OMF Diamond Products Site

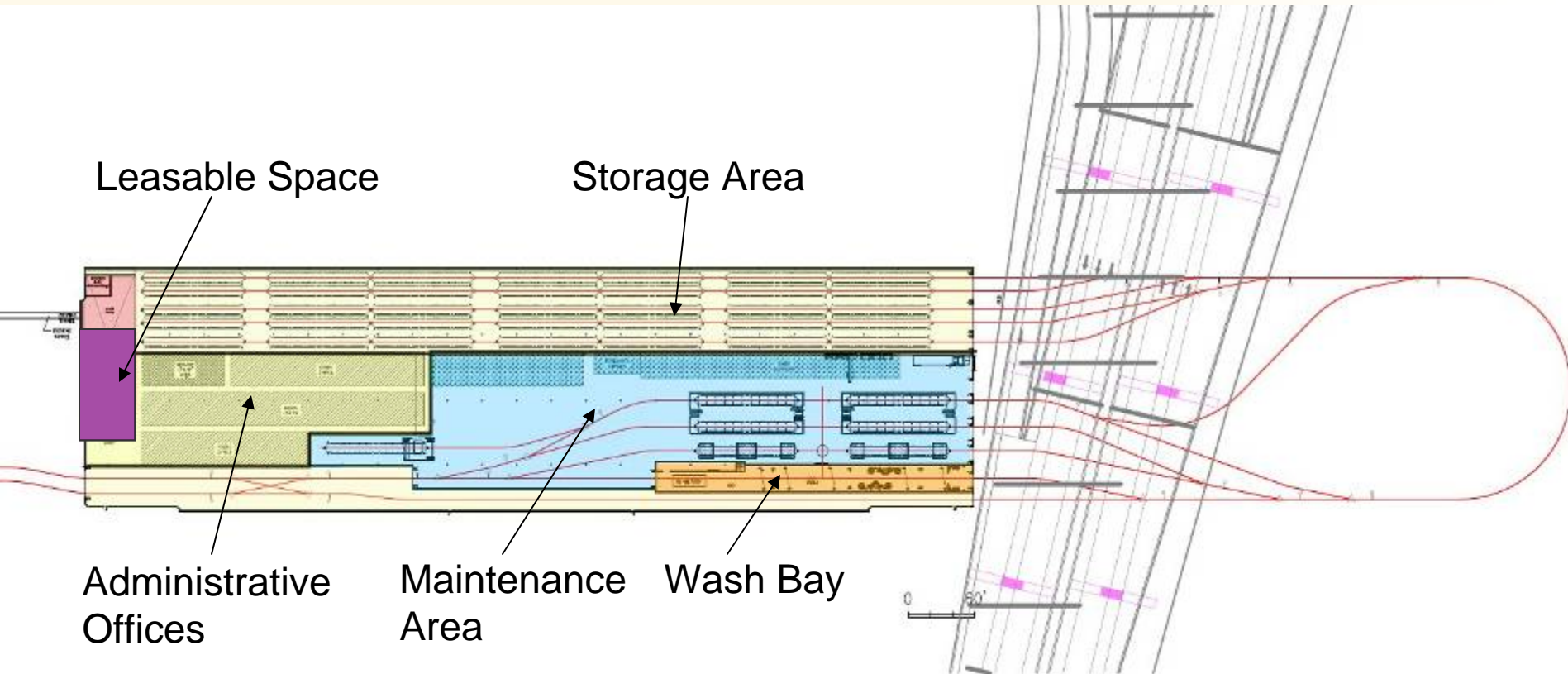


OMF Advanced PE Partial Build Layout

Layout included in \$913.9 MM project budget



OMF Advanced PE Full Build Layout



Community Comments and Concerns



- Realization of community redevelopment goals
- Noise and vibration
- Aesthetics
- Leasable space for non light rail uses
- Access to buildings and Farmers Market
- Consider other sites

Response to Community Concerns

- Create 150 full time jobs in St. Paul
- Adjusted operation plan to minimize bells and horns usage
- Committed to working with the community to modify south façade
- Redesigned facility to preserve ~ 5,000 sq. ft. of leasable space along Broadway
- Worked with Farmers Market to provide alternative access

Other Sites Considered and Rejected



- Ramsey County's Kellogg site
- Minneapolis SEMI sites
- Snelling site north of I-94
- Amtrak
- American Can

Summary



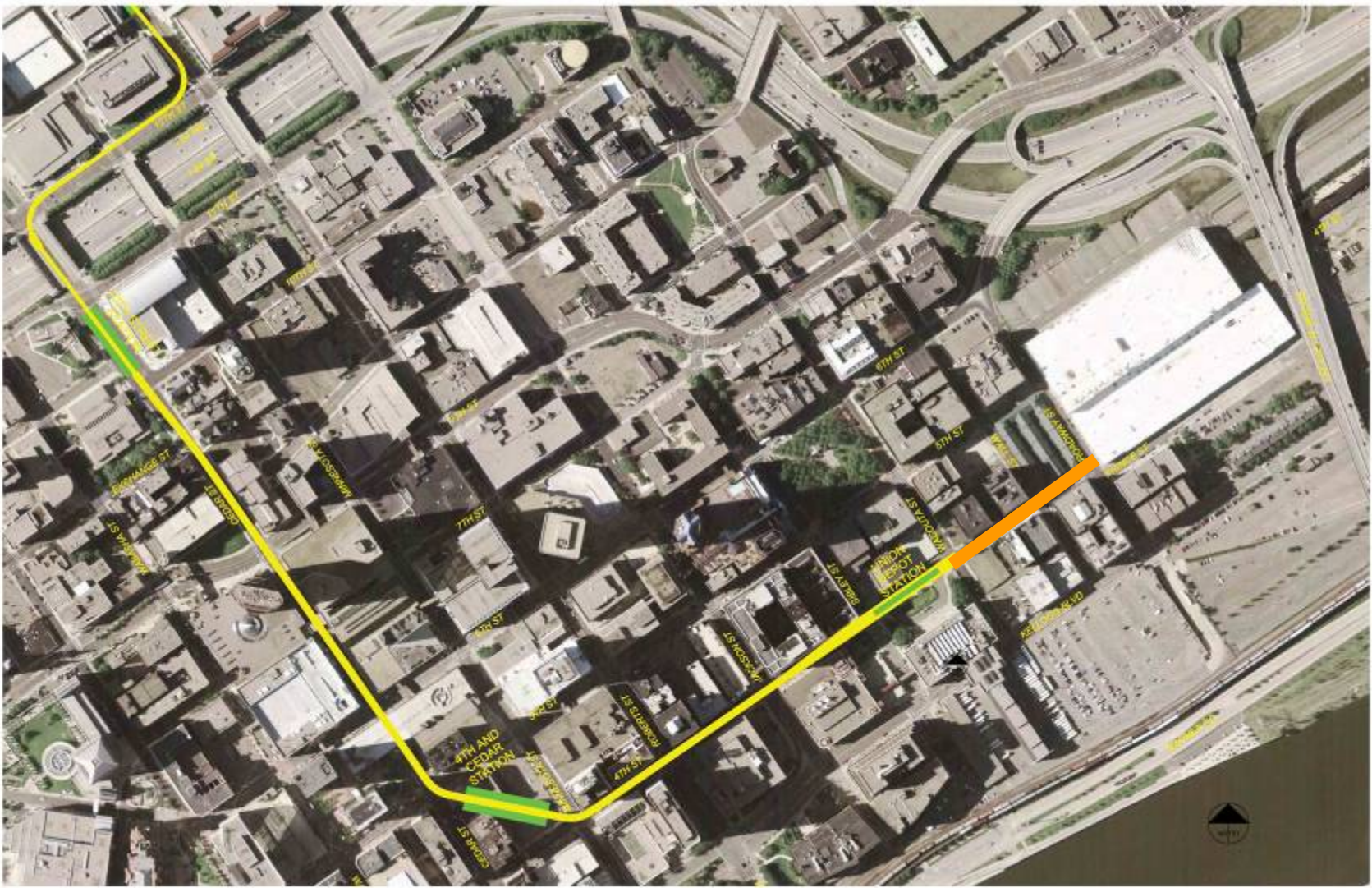
- St. Paul Diamond Product site determined most feasible
 - Minimizes or avoids historic impacts
 - Utilizes existing building
 - Provides full functionality and enclosed train storage
 - Meets project CEI constraints
- CCPO continues to work with the city of St. Paul, residents and businesses to address concerns

Central Corridor Light Rail Transit



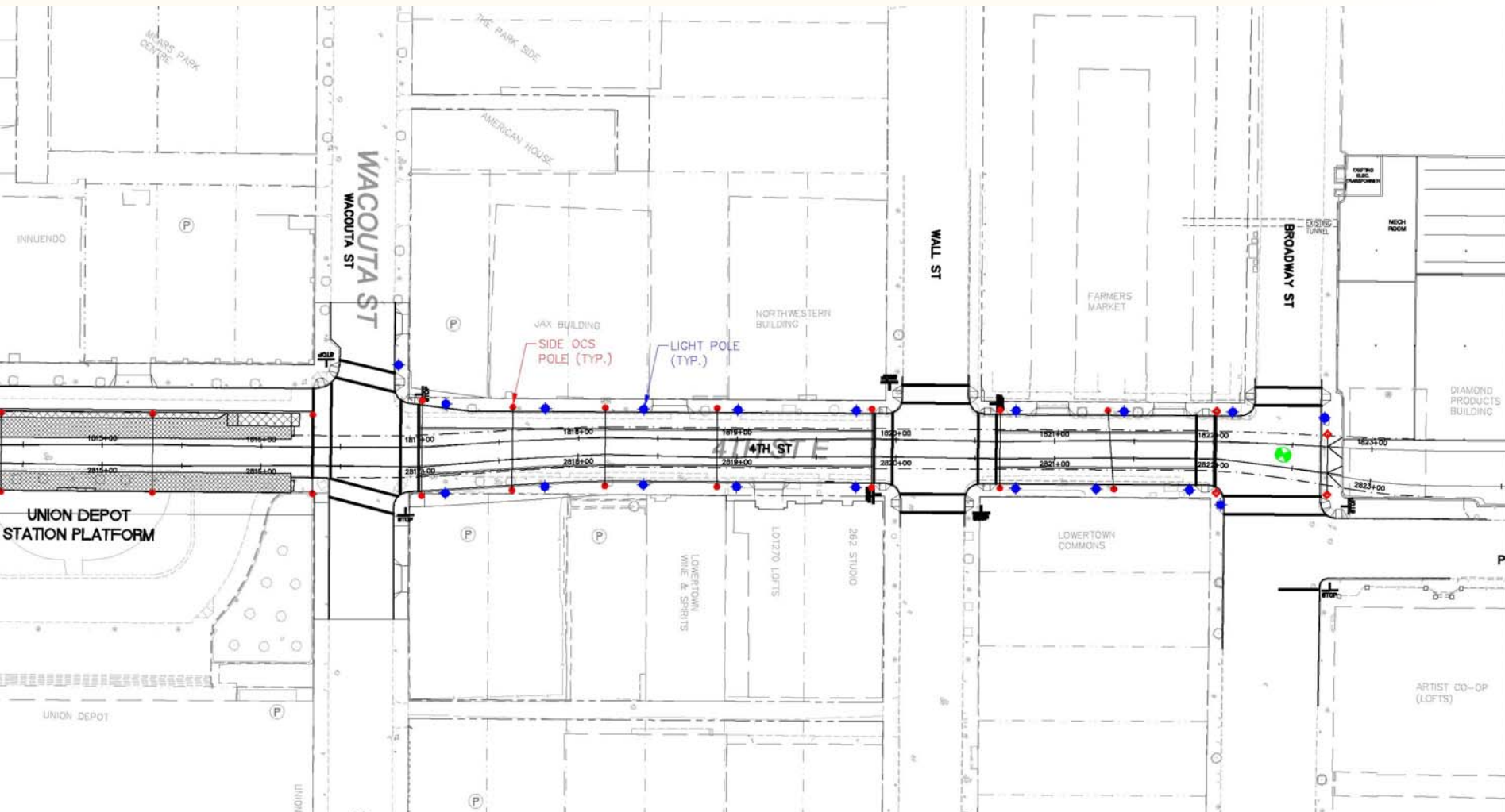
4th Street Alignment and Cross Section

4th Street Alignment



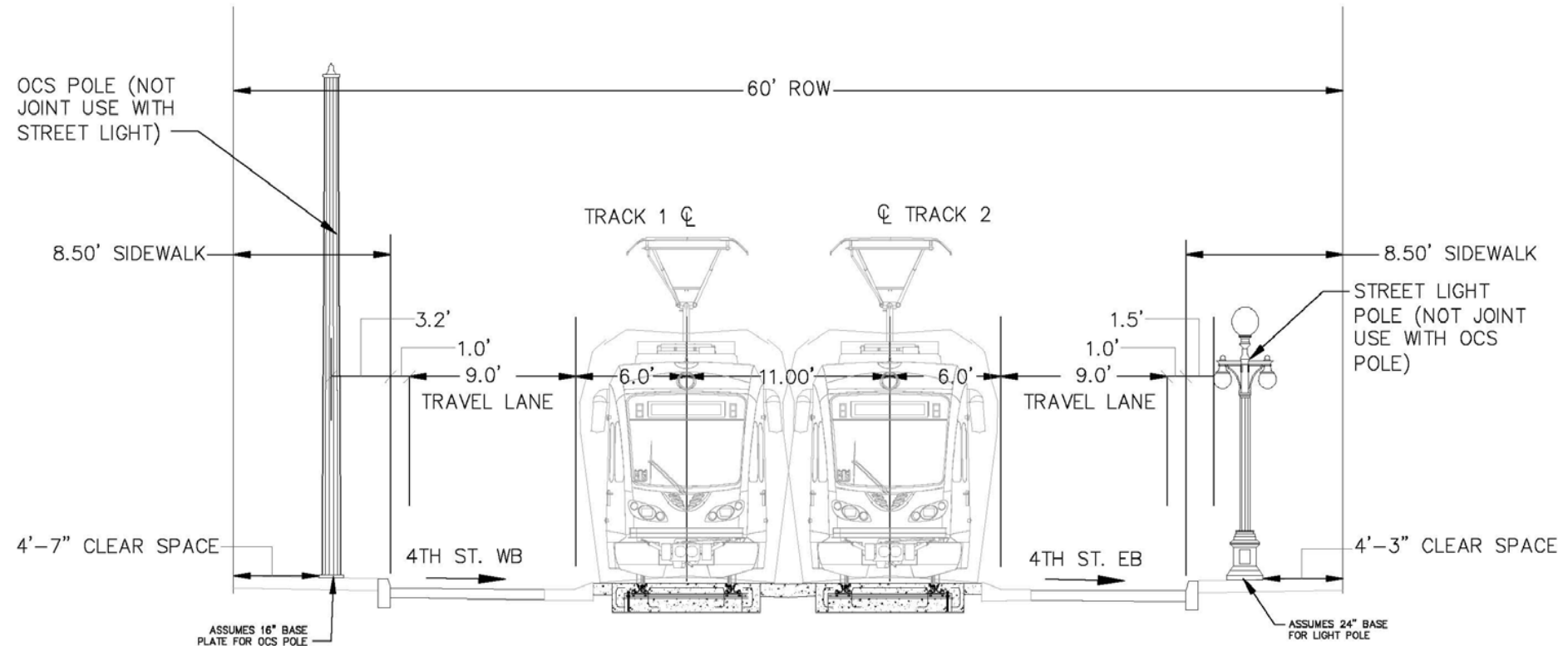
Central Corridor Light Rail Transit

4th Street Alignment



Central Corridor Light Rail Transit

4th Street Cross Section



Central Corridor Light Rail Transit



Disadvantaged Business Enterprise (DBE) Plan

DBE Outreach



Contractors and DBE's
mingle at Feb. 25 Mixer

- DBE Kick-Off Mixer
- Assn. of Women Contractors
- MEDA CPP
- HLRT DBE Lessons Learned
- General Contractor/DBE Exchange

Guidance

- State Goals
 - 11% Minority
 - 6% Women
- OFCCP Designated Mega Project

Outreach

- Twin Cities Coalition for Diversity in Construction
- Workforce Plan Meetings
- Building and Construction Trades Council
- Collaborative Workforce Mixer

Engineering Phase as of 12/08 17% Goal

AECOM	12 DBE's on team	20.5%
HDR	5 DBE's on team	15.0%
PEER*	1 DBE on team	13.0%

*Contract completed

More Information

Check out our website:

- www.centralcorridor.org

Contact Central Corridor Project Office:

- 540 Fairview Avenue North
St. Paul, MN 55104
- Comment Line: 651-602-1645
- Email: centralcorridor@metc.state.mn.us

