

Central Corridor Light Rail Transit

Business Advisory Council

February 16, 2009



*Improving
mobility*

*Easing
congestion*

*Strengthening
our communities*

Today's Agenda



- Project Updates
 - Project budget
 - Streetscape
 - 4th Street Advanced utility construction
 - Construction packages
- Business mitigation discussion

Central Corridor Light Rail Transit



Baseline Cost Estimate Update

Baseline Cost Estimate Update

- Materials Pricing Update
- Scope refinements
- Reevaluate contingency
- Summary



Materials Pricing Update

<u>Item</u>	<u>Unit Measure</u>	<u>Jan. 2009 Price Quote</u>	<u>Sept. '08 to Jan. '09 % Change</u>
Ready Mix Concrete	Cubic yard	\$98.00	+9%
Rail	Ton	\$1,400.00	0%
Underground Piping	Lineal foot	Variable by size	-1%
Asphalt	Ton	\$70.00	-7%
Aggregate	Cubic yard	\$8.49	-8%
Rebar	Pound	\$1.03	-18%

Central Corridor Light Rail Transit

Materials Pricing Update (in millions)

Item	PE Cost Estimate Impact (in \$2008millions)
Ready Mix Concrete	\$ 1.3
Rail	\$ -
Underground Piping	\$ (0.2)
Asphalt	\$ (0.6)
Aggregate	\$ (0.5)
Rebar	\$ (1.9)
<hr/>	
Total Material Variance (2008\$)	\$ (1.9)
Contingency (20%)	\$ (0.4)
Escalation (3 years @ 3%)	\$ (0.2)
Total (2011\$)	\$ (2.5)

Reevaluate Contingency

PE Cost impact +\$13.8 million



	PE Sept. 2008 Estimate (in millions)	Advanced PE Jan. 2009 Estimate (in millions)
Project Budget	\$ 914.9	\$ 913.9
Project Contingency	\$ 130.9	\$ 144.7
Percent of Program Costs*	17.4 %	20 %

* Percentage calculated on unexpended funds

Baseline Cost Estimate Summary

SEPTEMBER 2008 PE COST ESTIMATE (midyear 2011\$ millions) \$914.9

DEDUCTIONS (in millions)

Evaluate Materials Pricing Impacts	(\$2.5)
Scope Refinements	(\$5.2)
Diamond Products OMF	(\$3.0)
West Bank Configuration Modifications	(\$6.5)
Modified Track Cross Section - Reduce undercut and backfill by 1'-0"	(\$3.2)
Duplicative Scope for Traffic Mitigation	(\$1.3)

ADDITIONS (in millions)

Increase guideway cover from 4" concrete to 6" concrete w/ micro fiber. Required for median cover to carry service trucks	\$0.7
Add train bar signals at all traffic signals	\$1.0
Consolidation of TPSS at 4th and Cedar and West Bank not practical	\$1.5
CCLRT Safety Elements	\$3.6

REVISED TOTAL \$900.1

Contingency increased to 20% Program Costs (excludes expended funds) \$13.8

REVISED TOTAL \$913.9

Central Corridor Light Rail Transit



Streetscape

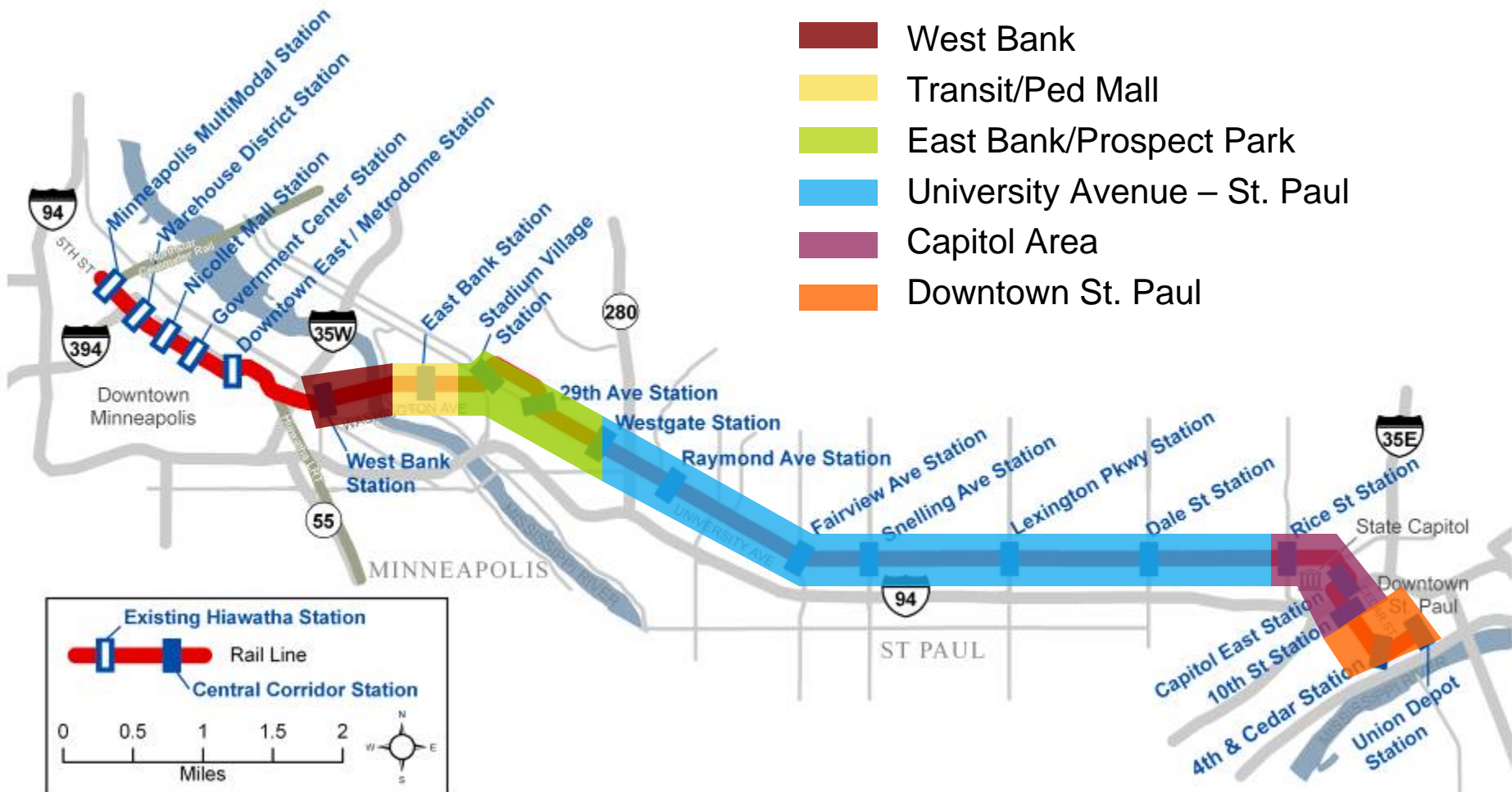
Streetscape



- Design scope includes
 - Baseline plan
 - Master streetscape plan
- Streetscape elements designated as
 - Baseline design elements
 - Stakeholder desired elements, betterments

Central Corridor Light Rail Transit

Streetscape Planning Segments



Streetscape Design Baseline Plan Elements



- Replace existing elements along University Avenue
- Provide safety elements for LRT operation
- Included in baseline budget

Streetscape Design Baseline Plan Elements



- Sidewalk replacement
- Concrete median
- Street lighting, remove and re-install existing light fixtures
- Concrete intersections and crosswalks at signalized intersections

Streetscape Design Baseline Plan Elements



- Bus shelters, remove and re-install existing shelters
- Boulevard trees, in-kind replacement
- Station markers and wayfinding signs

Streetscape Design Baseline Plan Elements



- Inter-track post and double chain fence
- Curb wall and metal railing along road edge of median walkway
- Metal fence along track edge of median walkway
- Concrete bollards at stations adjacent to intersections

Streetscape Design Baseline Plan Elements

- Elements at non signalized pedestrian crossing
 - Tactile warning edges
 - Lighting at intersection and along median walkway
 - Bike racks
 - Striped crosswalks



Project Baseline Plan

Example of University Ave. Intersection, St. Paul



Dale and University

Project Baseline Plan

Example of Non-signalized Pedestrian Crossing, St. Paul



Project Baseline Plan

Example of University Ave. Intersection, Minneapolis



Malcolm and University

Streetscape Design Stakeholder Desired Elements



- Enhancements to existing conditions along University Avenue
- Upgrades to baseline elements, betterments

Streetscape Master Plan

Example of Betterments, University Ave., St. Paul



Dale and University

Streetscape Master Plan

Example of Betterments, University Ave., St. Paul



Streetscape Master Plan

Example of Betterments, University Ave., Minneapolis



Malcolm and University

Baseline to Betterments Cost Comparison

- Examples
 - Street lights
 - Sidewalk treatment
 - Overhead contact system poles



Street Lights – St. Paul

University Avenue (Emerald to Rice)



- **Baseline** project includes replacement and reinstallation of existing street lights
- St. Paul proposes **betterment** of twin lantern street lights
- Costs \$2.5MM more than baseline

Sidewalk Treatment - St. Paul University Avenue (Emerald to Rice)



- **Baseline** project
 - Replacement of existing sidewalk
 - In-kind replacement of trees
- St. Paul proposed **betterments**
 - Boulevard pavers
 - Structural soil
 - Additional trees
- Costs \$8.5MM more than baseline

Overhead Contact System Pole

University Avenue (29th to Marion)

Wide Flange



Tapered Tubular



- **Baseline** project includes wide flange OCS poles
- St. Paul & Minneapolis propose **betterment** of painted tapered tubular OCS poles
- Costs \$1MM more than baseline

Streetscape Design Next Steps

Central Corridor Light Rail Transit



- CCPO finalizing costs for betterment elements for University Ave
- CCPO working with stakeholders to define betterment elements for West Bank, Capitol Area, and downtown St. Paul areas
- Stakeholders must secure funding for betterment elements to be added during construction

Central Corridor Light Rail Transit



4th Street Advanced Utility Relocation

4th Street Advanced Utility Relocation



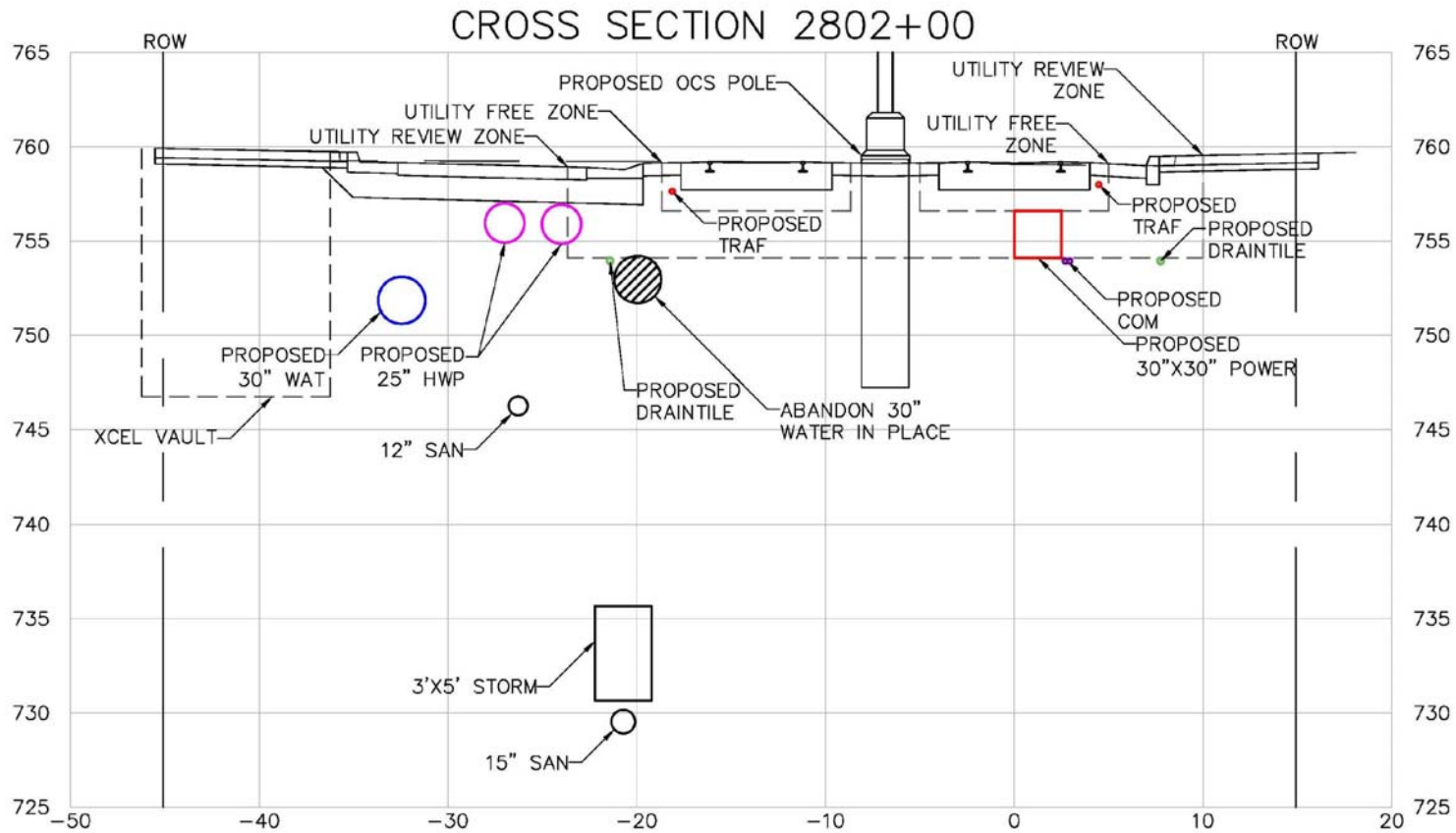
4th Street Advanced Utility Relocation



- Coordinate with public and private utilities
- Minimize impact and cost to all parties
- CCLRT will excavate and restore 4th street at project cost
- Public and private utilities able to remain in 4th St
- Seek similar solutions throughout downtown St. Paul

4th Street Advanced Utility Relocation

Central Corridor Light Rail Transit



Central Corridor Light Rail Transit



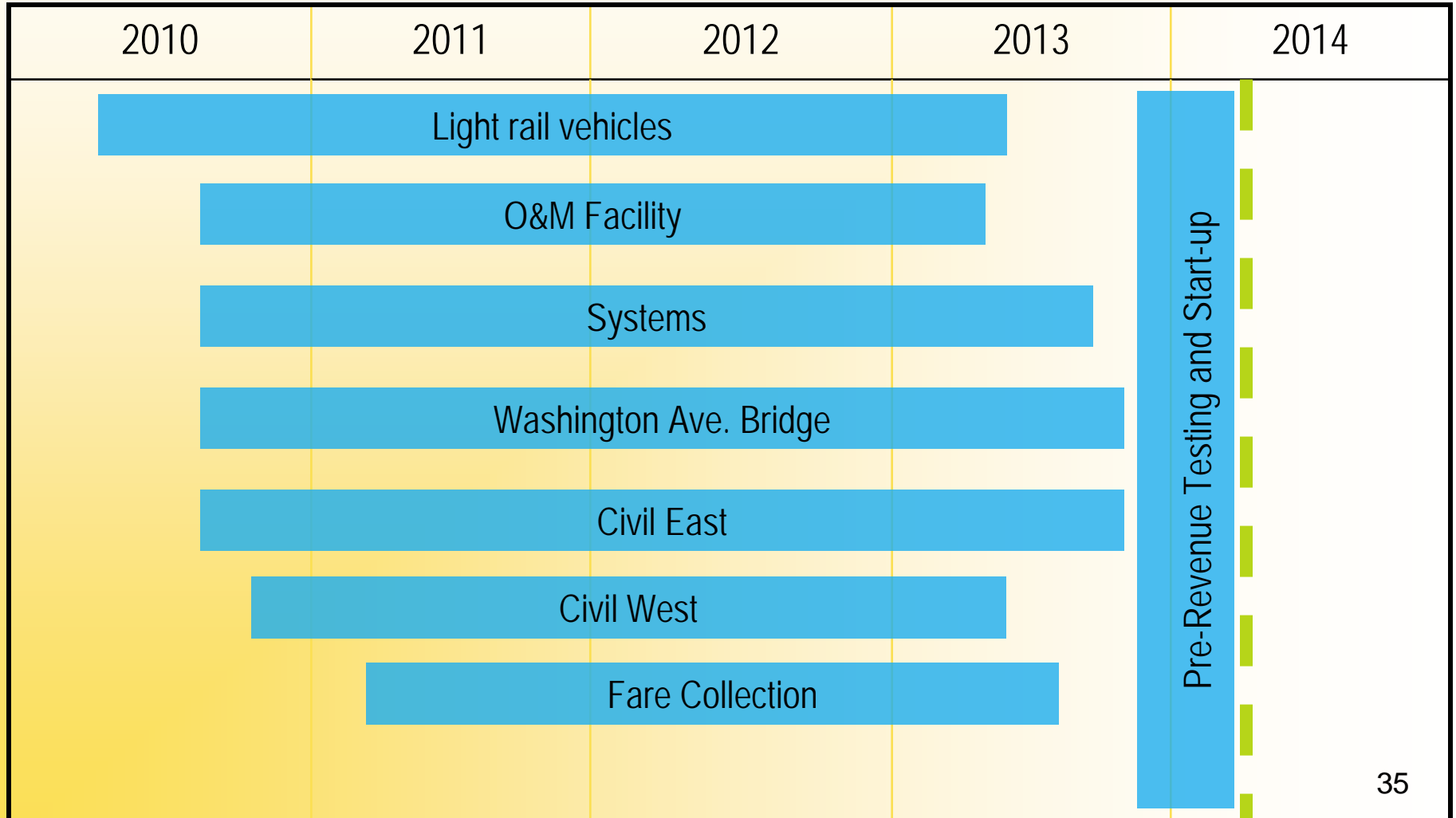
Construction Packages

Project Schedule Update

	Jan 15, 2009 Updated
Meet with FTA	Feb. 3, 2009
FEIS admin draft to FTA	Feb. 9, 2009
FTA comments to CCPO	Mar. 11, 2009
Publish FEIS	Apr. 20, 2009
FEIS review period	May 20, 2009
FTA issues Record of Decision (ROD)	June 3, 2009
CCPO submits LONP for advanced utilities	June 4, 2009
Advertise advanced utility contract	June 4, 2009
Request entry into Final Design	June 23, 2009
Notice to Proceed for advanced utility	Aug. 24, 2009
FTA approves entry into Final Design	Sept. 21, 2009
Submit FFGA application to FTA	Sept. 22, 2009
FFGA from FTA	Summer 2010
Begin heavy construction	Late Summer 2010

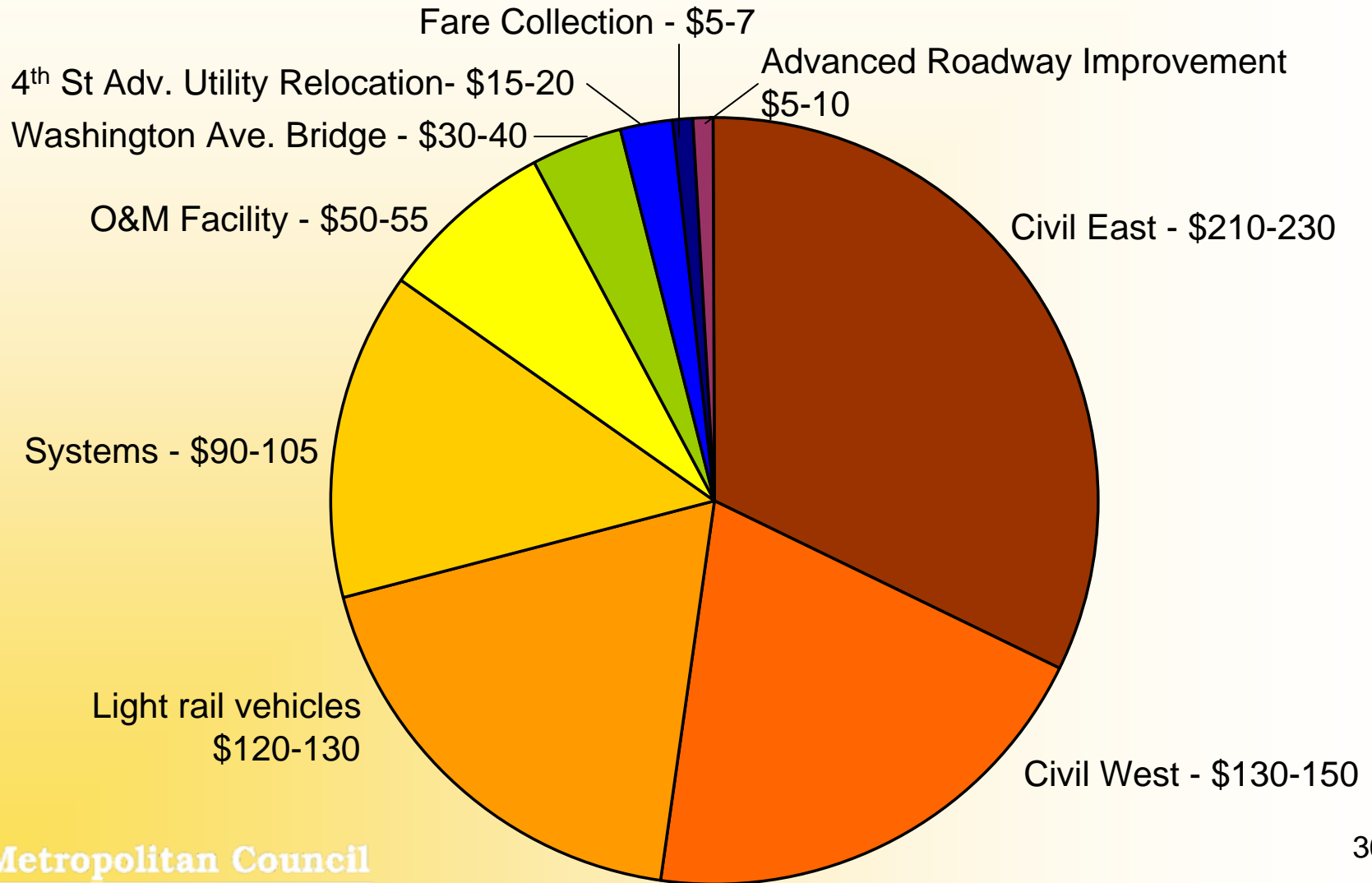
Estimated Heavy Construction Schedule

Central Corridor Light Rail Transit



Anticipated Contracts

(Cost Est. Ranges in \$ Millions)



More Information

Check out our website:

- www.centralcorridor.org

Contact Central Corridor Project Office:

- 540 Fairview Avenue North
St. Paul, MN 55104
- Comment Line: 651-602-1645
- Email: centralcorridor@metc.state.mn.us

