

# Central Corridor Light Rail Transit



*Improving  
mobility*

*Easing  
congestion*

*Strengthening  
our communities*

## What is LRT?



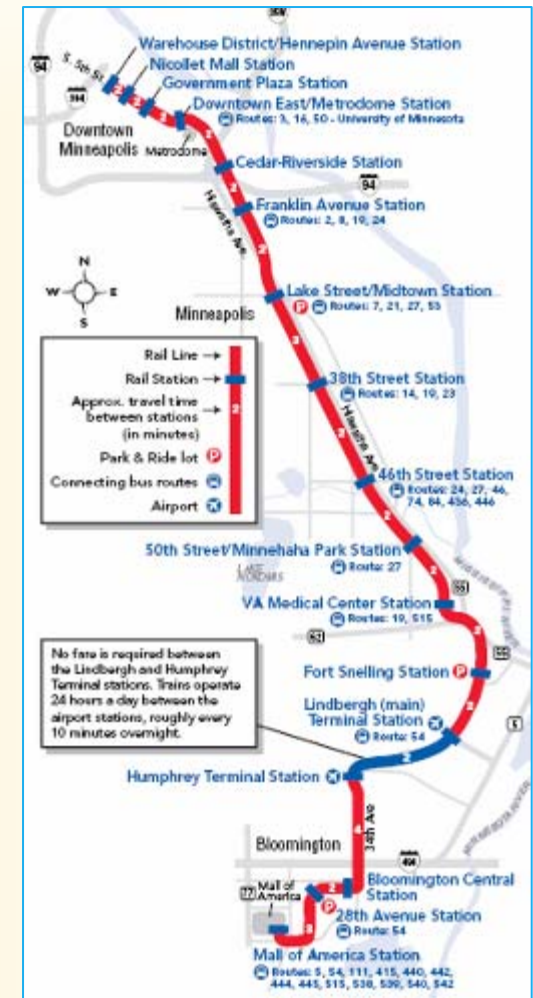
- LRT = light rail transit
- High capacity
- Fast acceleration and braking
- Electricity powered
- Quiet operation
- Frequent service 21 hours/day



## Central Corridor Light Rail Transit

# Building on Hiawatha LRT Success

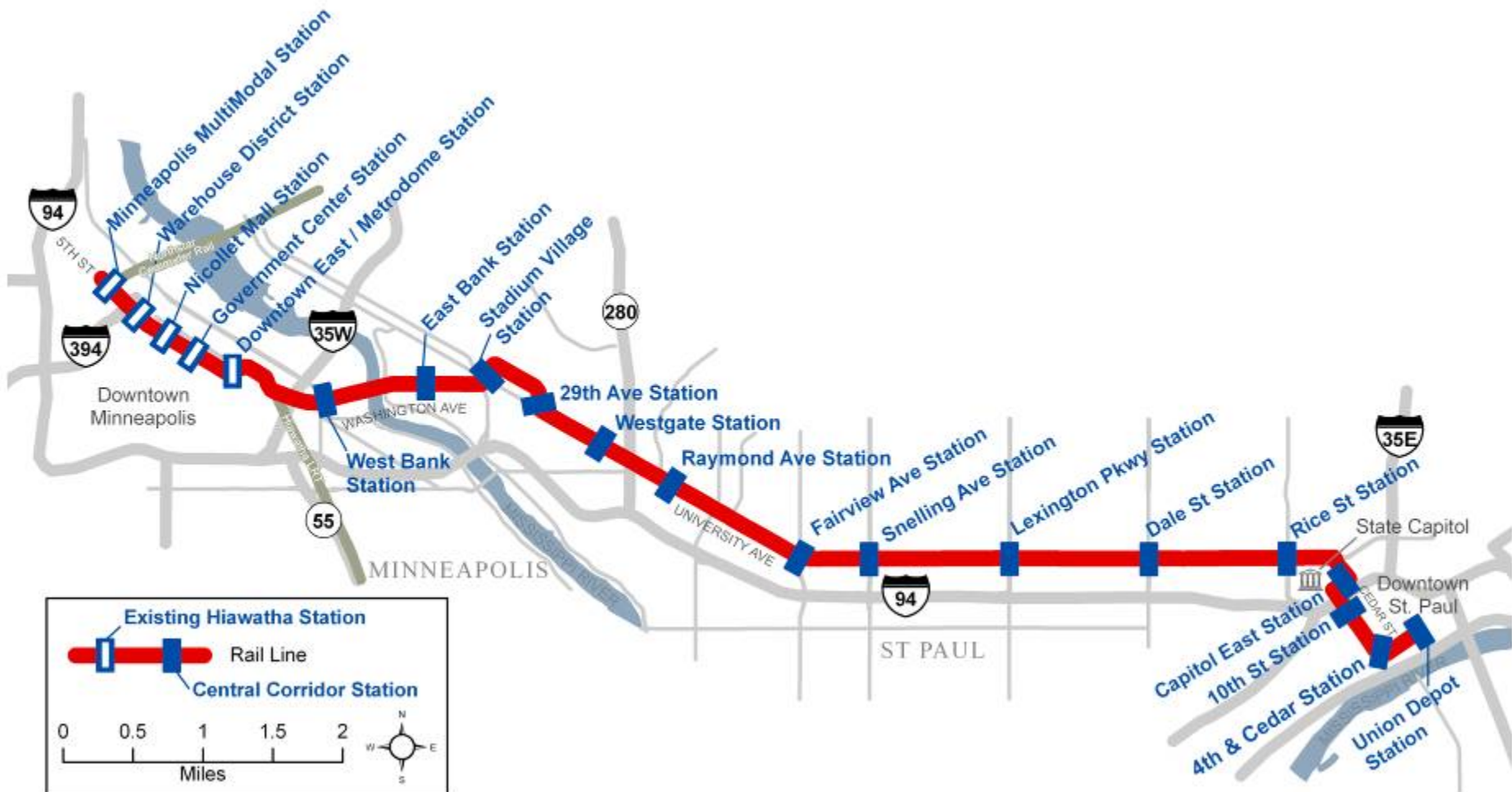
- Exceeding expectations
  - 30,500 ave. weekday riders
  - Half of riders new transit users
- 34 local bus route connections south of downtown
- Supporting development
  - 7,700 new housing units constructed since 2000
  - 7,150 forecasted new housing units by 2020



Sept. 2009

# Central Corridor Light Rail Transit

# Route and Stations



## Operations



- 35 minutes from downtown to downtown
- 7 ½ minutes between trains during peak periods
- 31 vehicles
- 135 people per vehicle
- 41,690 projected riders per weekday by 2030

# Central Corridor Light Rail Transit

## Timeline



Complete

Prepare DEIS; select alignment & mode

2007

Enter Preliminary Engineering (PE)

2009

Enter final design and apply for federal funding

2010

Begin construction

2014

Start operation

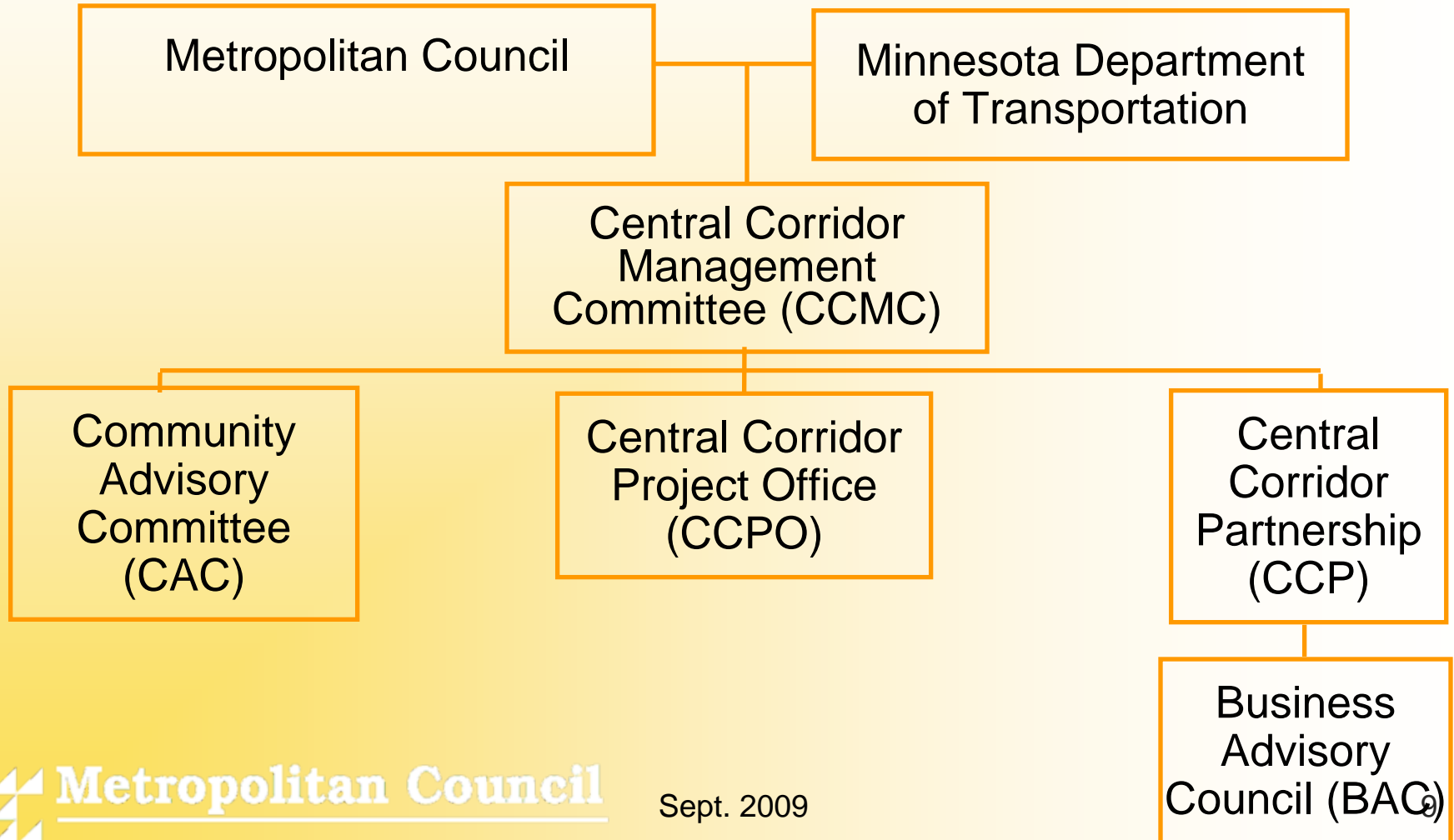
Sept. 2009

# Project Partners



- Met Council/Metro Transit
- Mn/DOT
- Ramsey County
- Hennepin County
- County Transit Improvement Board
- City of St. Paul
- City of Minneapolis
- University of Minnesota

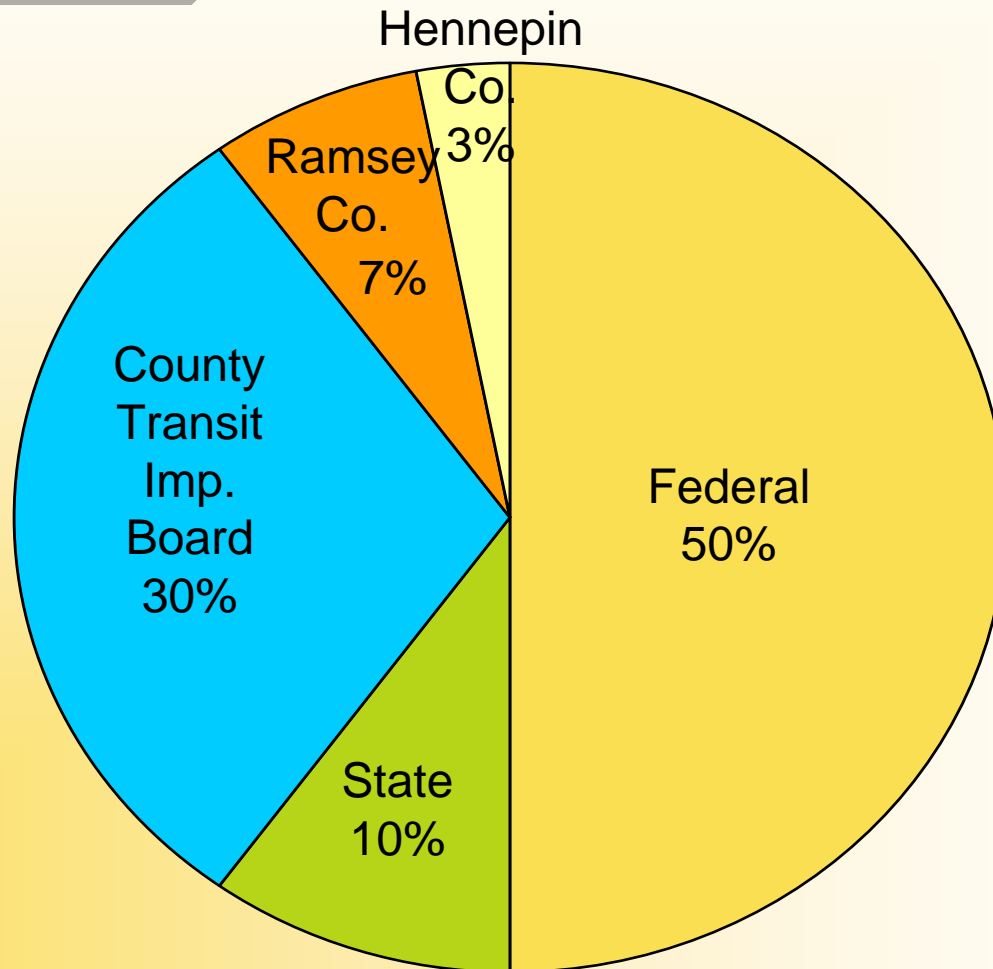
# Organization



# Central Corridor Light Rail Transit

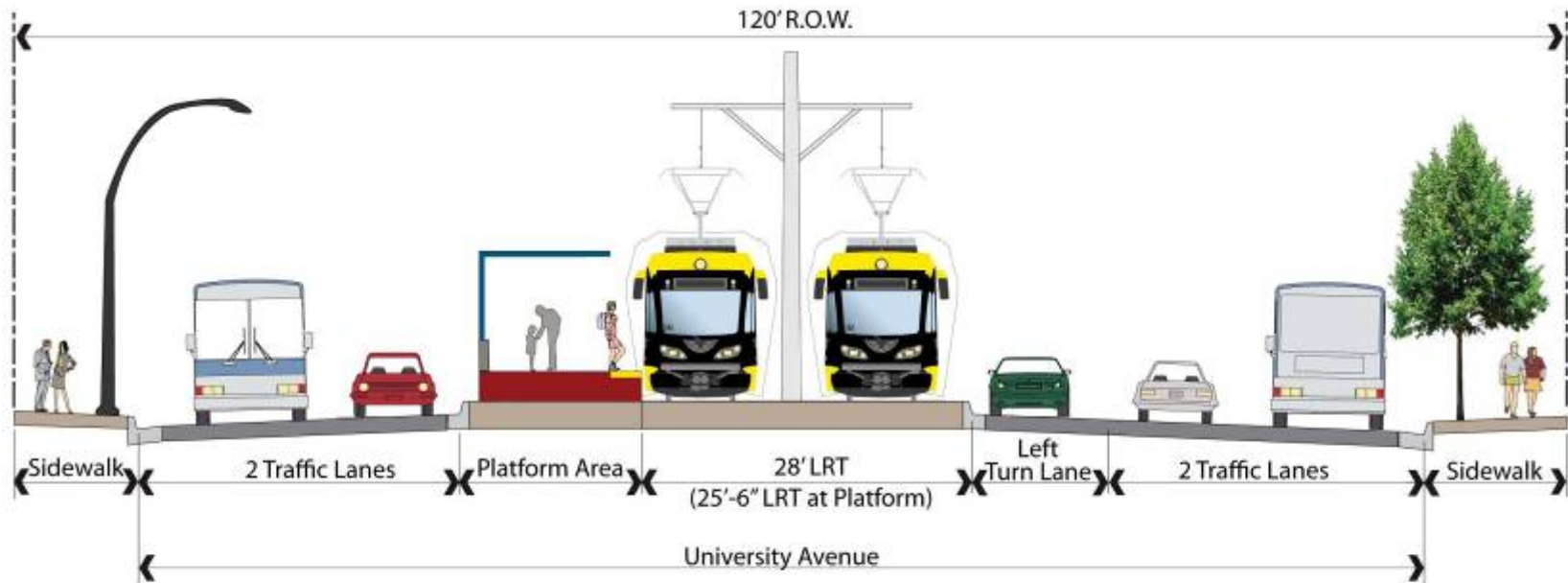
# Sources of Funds

Project Cost: up to \$941 Million



Sept. 2009

# University Avenue Cross Section Showing Changes at a Typical Station



EXISTING TYPICAL CROSS-SECTION THROUGH UNIVERSITY AVENUE - STATION  
Added Sidewalk

## Central Corridor Light Rail Transit

Improving  
mobility

## Outcomes



- Improved mobility for people who depend on transit
- Faster travel times
- Improved dependability
- Higher capacity
- Complements bus routes
- Supports auto-free lifestyles

## Central Corridor Light Rail Transit

Easing  
congestion

## Outcomes



- Traffic congestion in corridor, I-94 and neighboring areas
- Drivers leave autos for LRT
- Higher density housing complements better LRT service
- Five major destinations
- Hiawatha LRT connection for airport and MOA trips

## Central Corridor Light Rail Transit

Strengthening  
our communities

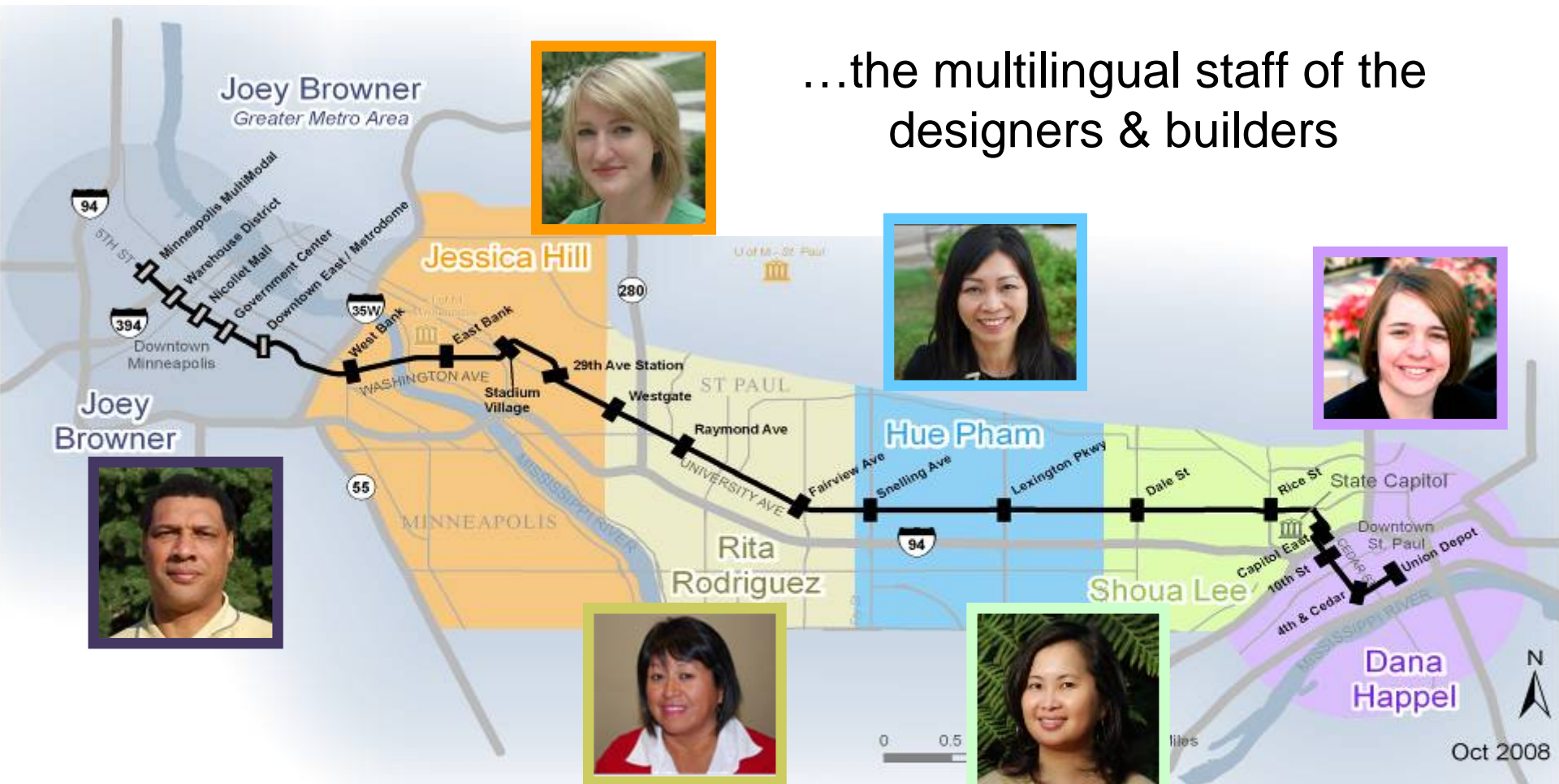
## Outcomes



- Neighborhood station identity
- People “return” to central cities
- Dense, diverse housing
- Business, mixed use investment
- Metro prestige

# Your source for Central Corridor Light Rail Transit information...

...the multilingual staff of the designers & builders



**Joey Browner**  
Downtown Minneapolis and Greater Metro area  
651-602-1953  
joey.browner@metc.state.mn.us

**Jessica Hill**  
29th Ave, Stadium Village, East Bank, West Bank  
U of M Campuses - Minneapolis & St Paul  
651-602-1840  
jessica.hill@metc.state.mn.us

**Rita Rodriguez**  
Fairview, Raymond, and Westgate  
651-602-1805  
rita.rodriguez@metc.state.mn.us

**Hue Pham**  
Snelling and Lexington  
651-602-1559  
hue.pham@metc.state.mn.us

**Shoua Lee**  
Dale, Rice, and Capitol East  
651-602-1014  
shoua.lee@metc.state.mn.us

**Dana Happel**  
Downtown St. Paul  
651-602-1954  
dana.happel@metc.state.mn.us

## More Information

Check out our website:

- [www.centralcorridor.org](http://www.centralcorridor.org)

Contact the Central Corridor Project Office:

- 540 Fairview Avenue North  
St. Paul, MN 55104
- Comment Line: 651-602-1645
- Email: [centralcorridor@metc.state.mn.us](mailto:centralcorridor@metc.state.mn.us)

