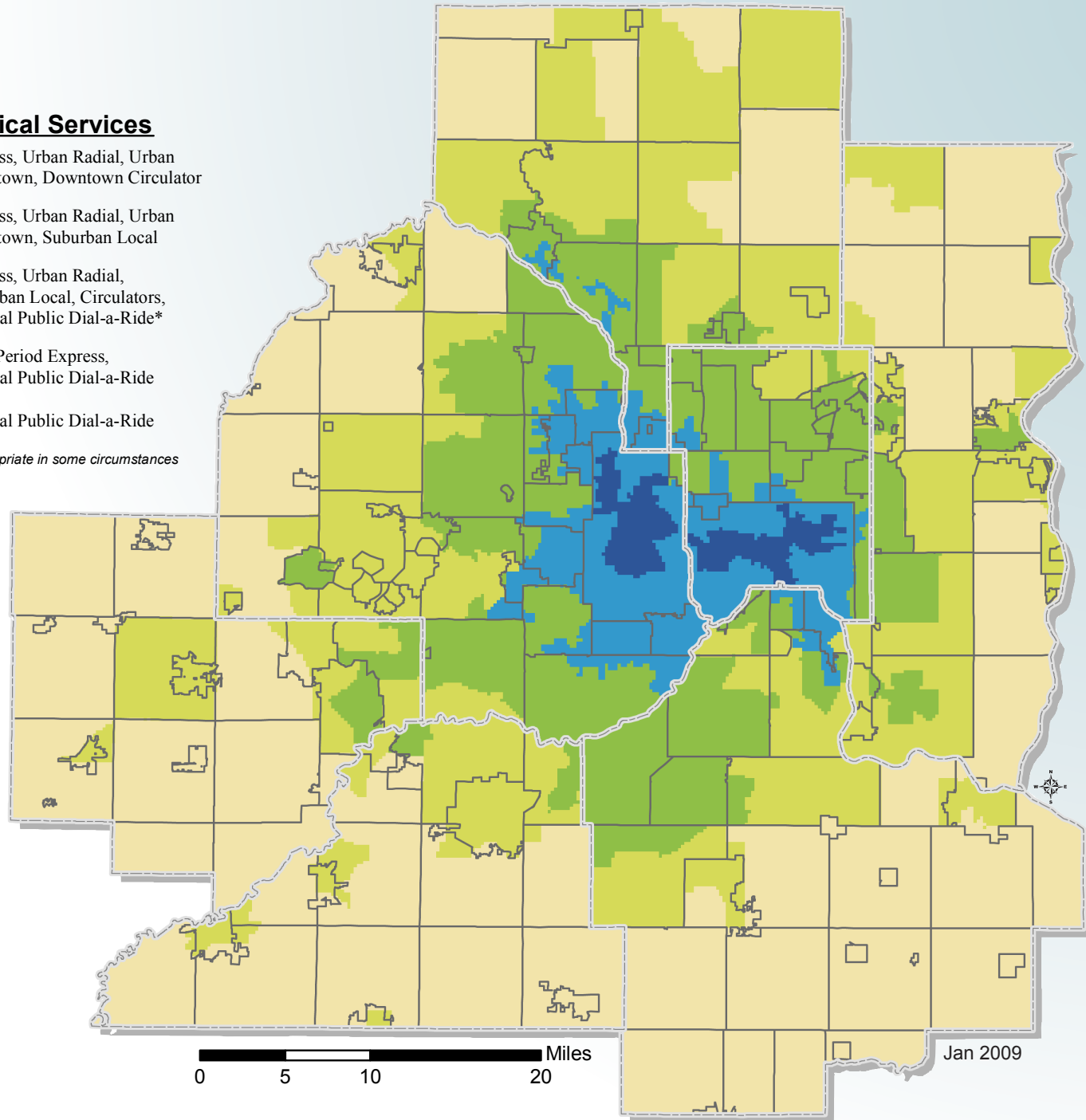


Market Area **Typical Services**

- Area 1** Express, Urban Radial, Urban Crosstown, Downtown Circulator
- Area 2** Express, Urban Radial, Urban Crosstown, Suburban Local
- Area 3** Express, Urban Radial, Suburban Local, Circulators, General Public Dial-a-Ride*
- Area 4** Peak Period Express, General Public Dial-a-Ride
- Area 5** General Public Dial-a-Ride

** Market Area 3 Dial-a-Ride is appropriate in some circumstances*



Jan 2009

- ADA paratransit service follows federal and state regulations in the fixed route service area

- Additional details on market areas and service standards are available in **Appendix G**

- Market area geography was calculated at the census block group level.

