

# **Annual Use Estimate of the Metropolitan Regional Parks System for 2010**

**Based on a four-year average of visitation  
data from 2007 through 2010**

**April 2011**



390 North Robert Street St. Paul, Minnesota 55101

## Metropolitan Council Members

|                    |             |                  |             |
|--------------------|-------------|------------------|-------------|
|                    | Susan Haigh | Chair            |             |
| Roxanne Smith      | District 1  | Edward Reynoso   | District 9  |
| Lona Schreiber     | District 2  | John Đoàn        | District 10 |
| Jennifer Munt      | District 3  | Sandra Rummel    | District 11 |
| Gary Van Eyll      | District 4  | Harry Melander   | District 12 |
| Steven Elkins      | District 5  | Richard Kramer   | District 13 |
| James Brimeyer     | District 6  | Jon Commers      | District 14 |
| Gary L. Cunningham | District 7  | Steven T. Chávez | District 15 |
| Adam Duinick       | District 8  | Wendy Wulff      | District 16 |

**T**he mission of the Metropolitan Council is to develop, in cooperation with local communities, a comprehensive regional planning framework, focusing on transportation, wastewater, parks and aviation systems that guide the efficient growth of the metropolitan area. The Council operates transit and wastewater services and administers housing and other grant programs.

|                      |  |
|----------------------|--|
| General phone        | 651-602-1000   |
| Regional Data Center | 651-602-1140   |
| TTY                  | 651-291-0904   |
| Metro Info Line      | 651-602-1888   |
| E-mail               | <a href="mailto:data.center@metc.state.mn.us">data.center@metc.state.mn.us</a> |
| Council Web site     | <a href="http://www.metrocouncil.org">www.metrocouncil.org</a>                 |

On request, this publication will be made available in alternative formats to people with disabilities. Please call the Metropolitan Council Data Center at 651-602-1140 or TTY 651-291-0904.

Printed on recycled paper with a minimum of 20% post-consumer waste.

Publication No. 78-11-023

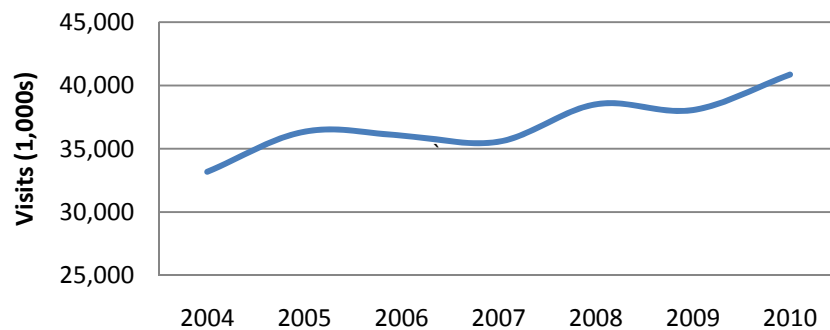
---

---

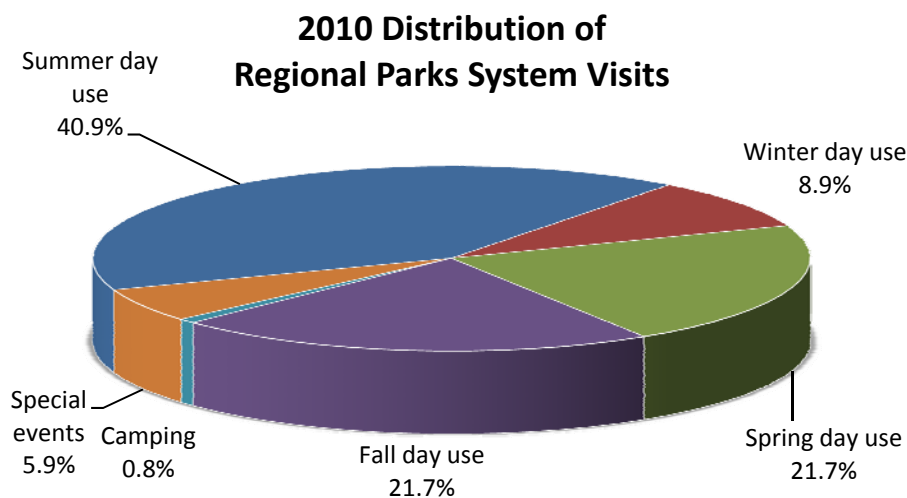
## Executive Summary

- An estimated **40,867,500 visits** were made to the Metropolitan Regional Parks System in 2010, which is an increase of 7.4% from 2009. The increase in visitation rates can be partially attributed to:
  - The increase in popularity of newly opened facilities, such as Silverwood, Big Marine Park Reserve, Dakota Rail Regional Trail and Cedar Lake Farm Regional Park
  - Higher than average annual summer counts at facilities including Como Park, Zoo & Conservatory; Mississippi Gorge Regional Park in Minneapolis and Minnehaha Parkway Regional Trail
  - The reclassification of regional trails in Ramsey County to identify entrance points that had not been captured in previous counts
- Estimated annual visits have increased 23 percent since 2004. A total of 89 park and trail units were sampled in 2010 compared to 73 units sampled in 2004.

### Total Annual Visits: 2004 to 2010



- The following chart indicates the distribution of estimated visits by seasonal day use, camping and special events:



- The five most-visited regional parks, trails and special recreation features in 2010 were:

| <b><i>Park/Reserve/Trail</i></b>                                       | <b><i>2010 Visits</i></b> |
|--|---------------------------|
| 1. Minneapolis Chain of Lakes Regional Park                            | 5,100,800                 |
| 2. Como Regional Park, Zoo and Conservatory Special Recreation Feature | 3,561,700                 |
| 3. Mississippi Gorge Regional Park (Minneapolis & St. Paul)            | 2,181,600                 |
| 4. Minnehaha Parkway Regional Trail                                    | 1,602,800                 |
| 5. Nokomis-Hiawatha Regional Park                                      | 1,431,700                 |

- Fifty-five percent of all estimated visits occurred in regional parks and trails in Minneapolis and St. Paul. This reflects a decrease in the share of visits to those parks and trails in the regional system over time (65.7% share in 2000). This is due primarily to the addition of park and trail facilities and population growth occurring outside these two cities.
- Twenty-four percent of all visits in 2010 were to regional trails and 76 percent were visits to regional parks, park reserves and special recreation features. Although Anoka County Riverfront, Minneapolis Chain of Lakes, and Mississippi Gorge are regional parks, the majority of visits to these parks are for trail use. If the trail visits to these regional parks were included in the trail totals, almost 40 percent of all 2010 visits were to trails.
- Fifty-five percent of all visits to regional parks and trails are considered “local” visits. A local visit is defined as a visit to a park or trail by a person who lives within the jurisdiction of the park agency that owns or operates that park or trail. Conversely, 45 percent of all visits to regional parks and trails are “non-local” visits, which clearly demonstrates that the system serves a regional audience.
- Walking and biking are the top activities in the regional parks system, followed by swimming, jogging, picnicking and relaxing. This information is based on data from the [Metropolitan Council Regional Parks and Trails Survey 2008](#).

## Acknowledgements

The Metropolitan Regional Parks System is owned and managed by 10 county, city or special park district implementing agencies. Each agency is responsible for conducting the annual counts for their Regional Parks System units. Over 3,760 staff hours across agencies were put into the annual use sample counts for 2010, along with significant amounts of staff training and oversight. Without the help of the implementing agencies, the annual use estimate would not be possible.

The agencies and their count supervisors for 2010 are:

Anoka County – Cindy Higgins

City of Bloomington – Mark Morrison

Carver County – Lenny Schmitz

Dakota County – Doug Gross

Minneapolis Park and Recreation Board – Jennifer Ringold

Ramsey County – Jody Yungers

City of Saint Paul – Cindy Morrison

Scott County – Patricia Freeman

Three Rivers Park District – Jon Nauman and Thomas Mercier

Washington County – Lori Meyers

---

### Metropolitan Parks and Open Space Commission

The Metropolitan Parks and Open Space Commission advises the Metropolitan Council on system-wide policy planning issues regarding the Metropolitan Regional Parks System.

Charles Haas, Chair

|                |            |                   |            |
|----------------|------------|-------------------|------------|
| Doug Baines    | District A | Tom Gamec         | District E |
| Robert Moeller | District B | Daniel Shlaferman | District F |
| Richard Jabs   | District C | Vacant            | District G |
| Jeffrey Lee    | District D | Barbara Schmidt   | District H |

---

Report prepared by:  
Jan Youngquist  
Planning Analyst-Parks  
Metropolitan Council

## Contents

|   |   |
|---|---|
| Executive Summary.....                          | i |
| Introduction .....                              | 1 |
| How the annual use estimate is calculated ..... | 1 |

## Tables

|  |    |
|--|----|
| Table 1: 2010 Visitation Estimate .....  | 3  |
| Table 2: Special event counts for 2010.....  | 9  |
| Table 3: Comparison of 2009 and 2010 visitation .....  | 24 |
| Table 4: Comparison of 2009 and 2010 park vs. trail visitation .....                         | 24 |
| Table 5: Most-visited regional parks and trails - 2010 .....                                 | 25 |
| Table 6: Urban parks visitation - 2010.....  | 25 |
| Table 7: Como visitation – park and zoo/conservatory special recreation feature .....        | 25 |
| Table 8: Visitation estimates by agency for operations and maintenance formula purposes..... | 26 |
| Table 9: Regional Parks System units sample counted 2010.....                                | 27 |
| Table 10: Comparison of estimated visits at the agency level from 2004 to 2010 .....         | 28 |
| Table 11: Top activities in the Regional Park System - 2010 .....                            | 29 |
| Table 12: Visitor origin by agency - 2010.....   | 30 |
| Table 13: Local and non-local visits by agency - 2010 .....                                  | 31 |

## Introduction

The Metropolitan Regional Parks System that was sampled for this estimate in 2010 encompassed approximately 54,633 acres of parkland and included 38 regional parks, 12 park reserves, 6 special recreation features and 33 regional trails. These park/trail units are owned and operated by 10 implementing agencies – counties, special park districts and cities. The regional park implementing agencies include:

|                                     |                            |
|-------------------------------------|----------------------------|
| Anoka County                        | Ramsey County              |
| City of Bloomington                 | City of St. Paul           |
| Carver County                       | Scott County               |
| Dakota County                       | Three Rivers Park District |
| Minneapolis Park & Recreation Board | Washington County          |

This report presents annual use estimates for 89 units sampled in the Regional Parks System from data collected in 2007 through 2010. The information is reported by park/trail units for each implementing agency. Some parks and trails have sub-units that are operated by different implementing agencies, so total use for that park or trail is comprised of the sum of individual agency units.

Use estimates are reported in “visits.” One person entering the park represents one visit. Therefore, if a person visits a particular park once each week for a year, that represents 52 visits to that park.

## How the annual use estimate is calculated

The annual use estimate is based on the average of four years (2007 – 2010) of summer counts of bikers, pedestrians, horse-riders, boats, vehicles and charter buses that enter the park through recognized park entrances. People in vehicles and buses are not counted individually. To determine the number of people entering in vehicles or buses, a person-per-vehicle average is multiplied by the number of vehicles or buses in each sample count. The person-per-vehicle averages come from the [Metropolitan Council Regional Parks and Trails Survey 2008](#).

Counts are taken in two-hour samples between Memorial Day and Labor Day. Two-hour samples begin at 8 a.m., 10 a.m., 12 p.m., 2 p.m., 4 p.m. and 6 p.m. The entrances and times are randomly chosen, with the samples split evenly between weekdays and weekends. To accurately estimate summer use, at least 25 samples on weekends and 25 samples on weekdays in each park and trail are necessary, but it is cost-prohibitive to do 50 samples per park and trail every year. Therefore, the samples for the current year and the three previous years are combined to determine the annual use for each park and trail. For each year, at least 16 samples are drawn for each park and trail. The four-year approach results in a minimum of 32 samples on weekends and 32 samples on weekdays, which meets the statistical requirements for estimated visits.

**40,867,500**

Visits to the  
Regional Parks  
System in 2010

**54,633**

Acres of regional parkland

The four-year approach reduces the effect of extreme weather or other anomalies on each park's estimated visitation. It reduces the effects of a temporary closure of a popular facility and from road construction to the facility. The four-year average also somewhat underestimates increased visitation associated with a major new facility such as a swim pond or play structure. By the fourth year of the facility's existence, its visitation is fully represented in the data.

The annual estimate makes no attempt to correct for overestimates for temporary closures or underestimates for facility additions. All agencies in the regional system are adding desirable facilities and experiencing temporary closures of facilities that are being redeveloped. Therefore, it is believed that the four-year average has negligible effects when comparing visitation across agencies.

Summer visitation is calculated by taking the total number of people entering the park during each sample and multiplying it by the number of entrances and time slots that sample represents. Winter, spring and fall seasonal visitation estimates are then calculated from the summer visitation using seasonal multiplier data derived from the [Metropolitan Council Regional Parks and Trails Survey 2008](#).

Camping visits are also added to the annual estimate. A camping visit is defined as a camper in the park for any part of a day, so a family of four who camped one night would be counted as 8 total visits. Special events are also added to the annual use estimate when the attendance was greater than 300 people and the event did not take place during the sample counts. If sample counts occurred during a special event, they were not included in the estimate. Camping and special event data are not averaged across four years since the implementing agencies have records reflecting those types of visits on an annual basis.

**38** Regional Parks

**12** Park Reserves

**6** Special Recreation Features

**33** Regional Trails

### Table 1: 2010 Visitation Estimate

| Agency/Park                          | Summer           | Winter         |                  | Spring/Fall    |                  | Other *              |                             | Total Visits<br>(1,000's) | O & M Grant<br>Adjustments |
|--------------------------------------|------------------|----------------|------------------|----------------|------------------|----------------------|-----------------------------|---------------------------|----------------------------|
|                                      | visits (1,000's) | use multiplier | visits (1,000's) | use multiplier | visits (1,000's) | Camping<br>(1,000's) | Special Events<br>(1,000's) |                           |                            |
| <b>ANOKA COUNTY:</b>                 |                  |                |                  |                |                  |                      |                             |                           |                            |
| Anoka Co. Riverfront RP <sup>1</sup> | 135.8            | 0.245          | 33.2             | 1.054          | 143.1            | 0.0                  | 0.0                         | 312.1                     | Bunker Beach<br>-122.4     |
| Bunker Hills RP                      | 266.7            | 0.178          | 47.5             | 0.957          | 255.3            | 25.9                 | 228.5                       | 823.9                     |                            |
| Central Anoka RT                     | 25.2             | 0.306          | 7.7              | 1.317          | 33.1             | 0.0                  | 0.0                         | 66.0                      |                            |
| Coon Rapids Dam RP                   | 263.8            | 0.178          | 47.0             | 0.957          | 252.4            | 0.0                  | 17.7                        | 580.9                     |                            |
| Lake George RP                       | 136.5            | 0.178          | 24.3             | 0.957          | 130.6            | 0.0                  | 7.6                         | 298.9                     |                            |
| Martin-Island-Linwood Lakes RP       | 64.6             | 0.178          | 11.5             | 0.957          | 61.8             | 0.0                  | 9.3                         | 147.3                     |                            |
| Mississippi River RT                 | 33.2             | 0.306          | 10.2             | 1.317          | 43.7             | 0.0                  | 0.0                         | 87.1                      |                            |
| Rice Creek Chain PR                  | 144.6            | 0.178          | 25.7             | 0.957          | 138.3            | 31.0                 | 55.3                        | 394.9                     |                            |
| Rice Creek North RT                  | 27.8             | 0.306          | 8.5              | 1.317          | 36.6             | 0.0                  | 0.0                         | 72.9                      |                            |
| Rice Creek West RT                   | 148.9            | 0.306          | 45.6             | 1.317          | 196.1            | 0.0                  | 0.0                         | 390.5                     |                            |
| Rum River Central RP                 | 44.7             | 0.178          | 7.9              | 0.957          | 42.7             | 0.0                  | 0.0                         | 95.3                      |                            |
| RP/PR/SRF subtotals                  | 1,056.6          |                | 197.1            |                | 1,024.3          | 56.9                 | 318.3                       | 2,653.2                   |                            |
| RT subtotals                         | 235.0            |                | 71.9             |                | 309.5            | 0.0                  | 0.0                         | 616.4                     |                            |
| Subtotal:                            | 1,291.6          |                | 269.1            |                | 1,333.8          | 56.9                 | 318.3                       | 3,269.6                   | 3,147.2                    |

| Agency/Park                  | Summer           | Winter         |                  | Spring/Fall    |                  | Other *              |                             | Total Visits<br>(1,000's) | O & M Grant<br>Adjustments |
|------------------------------|------------------|----------------|------------------|----------------|------------------|----------------------|-----------------------------|---------------------------|----------------------------|
|                              | visits (1,000's) | use multiplier | visits (1,000's) | use multiplier | visits (1,000's) | Camping<br>(1,000's) | Special Events<br>(1,000's) |                           |                            |
| <b>BLOOMINGTON:</b>          |                  |                |                  |                |                  |                      |                             |                           |                            |
| Bush and Normandale Lakes RP | 259.9            | 0.178          | 46.3             | 0.957          | 248.7            | 0.0                  | 55.5                        | 610.4                     |                            |
| Subtotal:                    | 259.9            |                | 46.3             |                | 248.7            | 0.0                  | 55.5                        | 610.4                     | 610.4                      |

| Agency/Park           | Summer           | Winter         |                  | Spring/Fall    |                  | Other *              |                             | Total Visits<br>(1,000's) | O & M Grant<br>Adjustments |
|-----------------------|------------------|----------------|------------------|----------------|------------------|----------------------|-----------------------------|---------------------------|----------------------------|
|                       | visits (1,000's) | use multiplier | visits (1,000's) | use multiplier | visits (1,000's) | Camping<br>(1,000's) | Special Events<br>(1,000's) |                           |                            |
| <b>CARVER COUNTY:</b> |                  |                |                  |                |                  |                      |                             |                           |                            |
| Baylor RP             | 19.0             | 0.178          | 3.4              | 0.957          | 18.2             | 19.8                 | 6.3                         | 66.7                      |                            |
| Lake Minnewashta RP   | 66.7             | 0.178          | 11.9             | 0.957          | 63.9             | 0.0                  | 4.8                         | 147.4                     |                            |
| Lake Waconia RP       | 38.0             | 0.178          | 6.8              | 0.957          | 36.4             | 0.0                  | 12.1                        | 93.2                      |                            |
| RP/PR/SRF subtotals   | 123.8            |                | 22.0             |                | 118.4            | 19.8                 | 23.2                        | 307.3                     |                            |
| RT subtotals          | 0.0              |                | 0.0              |                | 0.0              | 0.0                  | 0.0                         | 0.0                       |                            |
| Subtotal:             | 123.8            |                | 22.0             |                | 118.4            | 19.8                 | 23.2                        | 307.3                     | 307.3                      |

**Notes:**

All visits are listed in units of 1,000 (i.e., "50.5" is equivalent to 50,500 visits).

RP = Regional Park; PR = Park Reserve; RT = Regional Trail; SRF = Special Recreation Feature

\* OTHER: Camping is in "visitor-days," where each visit is one person in the park for one day. A family of four staying one night would have 8 visitor-days. Special events include events over 300 and any unusual park-specific situations. Special events and situations are detailed in Table 2.

<sup>1</sup> In this park the majority of users are trail users. The multipliers were adjusted to reflect the mix of trail and park use.

### Table 1: 2010 Visitation Estimate

| Agency/Park                 | Summer           |                | Winter           |                | Spring/Fall      |                | Other *              |                             | Total Visits<br>(1,000's) | O & M Grant<br>Adjustments |
|-----------------------------|------------------|----------------|------------------|----------------|------------------|----------------|----------------------|-----------------------------|---------------------------|----------------------------|
|                             | visits (1,000's) | use multiplier | visits (1,000's) | use multiplier | visits (1,000's) | use multiplier | Camping<br>(1,000's) | Special Events<br>(1,000's) |                           |                            |
| <b>DAKOTA COUNTY:</b>       |                  |                |                  |                |                  |                |                      |                             |                           |                            |
| Big Rivers RT               | 47.5             | 0.306          | 14.5             |                | 1.317            | 62.6           | 0.0                  | 0.0                         | 124.6                     |                            |
| Lake Byllesby RP            | 52.9             | 0.178          | 9.4              |                | 0.957            | 50.6           | 23.2                 | 0.0                         | 136.1                     |                            |
| Lebanon Hills RP            | 172.6            | 0.178          | 30.7             |                | 0.957            | 165.2          | 31.9                 | 59.0                        | 459.5                     |                            |
| Miesville Ravine PR         | 36.6             | 0.178          | 6.5              |                | 0.957            | 35.0           | 0.0                  | 0.0                         | 78.1                      |                            |
| Mississippi River RT        | 7.2              | 0.306          | 2.2              |                | 1.317            | 9.5            | 0.0                  | 0.0                         | 18.9                      |                            |
| North Urban RT <sup>C</sup> | 12.9             | 0.306          | 4.0              |                | 1.317            | 17.0           | 0.0                  | 0.0                         | 33.9                      |                            |
| Spring Lake PR              | 32.0             | 0.178          | 5.7              |                | 0.957            | 30.7           | 0.0                  | 13.5                        | 81.9                      |                            |
| RP/PR/SRF subtotals         | 294.1            |                | 52.4             |                | 281.5            |                | 55.1                 | 72.5                        | 755.5                     |                            |
| RT subtotals                | 67.6             |                | 20.7             |                | 89.1             |                | 0.0                  | 0.0                         | 177.4                     |                            |
| Subtotal:                   | 361.7            |                | 73.0             |                | 370.5            |                | 55.1                 | 72.5                        | 932.9                     | 932.9                      |

| Agency/Park                                | Summer           |                | Winter           |                | Spring/Fall      |                | Other *              |                             | Total Visits<br>(1,000's) | O & M Grant<br>Adjustments |
|--|------------------|----------------|------------------|----------------|------------------|----------------|----------------------|-----------------------------|---------------------------|----------------------------|
|  | visits (1,000's) | use multiplier | visits (1,000's) | use multiplier | visits (1,000's) | use multiplier | Camping<br>(1,000's) | Special Events<br>(1,000's) |                           |                            |
| <b>MPLS. PARK &amp; RECREATION BOARD:</b>  |                  |                |                  |                |                  |                |                      |                             |                           |                            |
| Cedar Lake RT                              | 143.6            | 0.306          | 43.9             |                | 1.317            | 189.1          | 0.0                  | 0.0                         | 376.6                     |                            |
| Central Mississippi Riverfront RP          | 585.4            | 0.178          | 104.2            |                | 0.957            | 560.3          | 0.0                  | 181.2                       | 1,431.1                   |                            |
| Columbia Parkway RT                        | 29.8             | 0.306          | 9.1              |                | 1.317            | 39.2           | 0.0                  | 0.0                         | 78.1                      |                            |
| Kenilworth RT <sup>C</sup>                 | 237.1            | 0.306          | 72.5             |                | 1.317            | 312.2          | 0.0                  | 0.0                         | 621.8                     |                            |
| Luce Line RT <sup>C</sup>                  | 39.2             | 0.306          | 12.0             |                | 1.317            | 51.6           | 0.0                  | 0.0                         | 102.7                     |                            |
| Minneapolis Chain-of-Lakes RP <sup>1</sup> | 2,148.8          | 0.245          | 526.5            |                | 1.054            | 2,264.8        | 0.0                  | 160.8                       | 5,100.8                   |                            |
| Minnehaha Parkway RT                       | 604.4            | 0.306          | 184.9            |                | 1.317            | 795.9          | 0.0                  | 17.5                        | 1,602.8                   |                            |
| Minnehaha RP                               | 589.8            | 0.178          | 105.0            |                | 0.957            | 564.4          | 0.0                  | 16.8                        | 1,276.0                   |                            |
| Mississippi Gorge RP                       | 383.8            | 0.306          | 117.5            |                | 1.317            | 505.5          | 0.0                  | 73.0                        | 1,079.8                   |                            |
| Northeast Diagonal RT <sup>B</sup>         | 66.4             | 0.306          | 20.3             |                | 1.317            | 87.5           | 0.0                  | 0.0                         | 174.2                     |                            |
| Nokomis-Hiawatha RP                        | 651.4            | 0.178          | 116.0            |                | 0.957            | 623.4          | 0.0                  | 40.9                        | 1,431.7                   |                            |
| North Mississippi RP                       | 90.5             | 0.178          | 16.1             |                | 0.957            | 86.6           | 0.0                  | 1.5                         | 194.6                     |                            |
| Ridgeway Parkway RT                        | 7.6              | 0.306          | 2.3              |                | 1.317            | 10.0           | 0.0                  | 0.0                         | 20.0                      |                            |
| St. Anthony Parkway RT                     | 72.1             | 0.306          | 22.1             |                | 1.317            | 94.9           | 0.0                  | 0.0                         | 189.0                     |                            |
| Shingle Creek RT <sup>A</sup>              | 46.2             | 0.306          | 14.1             |                | 1.317            | 60.8           | 0.0                  | 0.0                         | 121.1                     |                            |
| Theodore Wirth RP                          | 172.6            | 0.178          | 30.7             |                | 0.957            | 165.2          | 0.0                  | 4.0                         | 372.5                     |                            |
| Victory (Wirth) Memorial Parkway RT        | 226.0            | 0.306          | 69.2             |                | 1.317            | 297.7          | 0.0                  | 2.2                         | 595.1                     |                            |
| RP/PR/SRF subtotals                        | 4,622.4          |                | 1,015.9          |                | 4,770.2          |                | 0.0                  | 478.2                       | 10,886.7                  |                            |
| RT subtotals                               | 1,472.2          |                | 450.5            |                | 1,938.9          |                | 0.0                  | 19.7                        | 3,881.4                   |                            |
| Subtotal:                                  | 6,094.6          |                | 1,466.4          |                | 6,709.1          |                | 0.0                  | 498.0                       | 14,768.1                  | 14,768.1                   |

**Notes:**

All visits are listed in units of 1,000 (i.e., "50.5" is equivalent to 50,500 visits).

RP = Regional Park; PR = Park Reserve; RT = Regional Trail; SRF = Special Recreation Feature

\* OTHER: Camping is in "visitor-days," where each visit is one person in the park for one day. A family of four staying one night would have 8 visitor-days. Special events include events over 300 and any unusual park-specific situations. Special events and situations are detailed in Table 2.

<sup>1</sup> In this park the vast majority of users are trail users. The multipliers were adjusted to reflect the mix of trail and park use.

<sup>A</sup> 1st year sampled

<sup>B</sup> 2nd year sampled

<sup>C</sup> 3rd year sampled

**Table 1: 2010 Visitation Estimate**

| Agency/Park                 | Summer           |                | Winter           |                | Spring/Fall      |                | Other *              |                             | Total Visits<br>(1,000's) | O & M Grant<br>Adjustments |
|-----------------------------|------------------|----------------|------------------|----------------|------------------|----------------|----------------------|-----------------------------|---------------------------|----------------------------|
|                             | visits (1,000's) | use multiplier | visits (1,000's) | use multiplier | visits (1,000's) | use multiplier | Camping<br>(1,000's) | Special Events<br>(1,000's) |                           |                            |
| <b>RAMSEY COUNTY</b>        |                  |                |                  |                |                  |                |                      |                             |                           |                            |
| Bald Eagle-Otter Lake RP    | 124.1            | 0.178          | 22.1             | 0.957          | 118.8            | 0.0            | 39.7                 | 304.8                       |                           |                            |
| Battle Creek RP             | 266.5            | 0.178          | 47.4             | 0.957          | 255.1            | 0.0            | 10.7                 | 579.8                       |                           |                            |
| Birch Lake RT               | 21.2             | 0.306          | 6.5              | 1.317          | 27.9             | 0.0            | 3.5                  | 59.1                        |                           |                            |
| Bruce Vento RT              | 72.9             | 0.306          | 22.3             | 1.317          | 96.0             | 0.0            | 0.6                  | 191.9                       |                           |                            |
| Grass-Vadnais-Snail Lake RP | 272.1            | 0.178          | 48.4             | 0.957          | 260.4            | 0.0            | 4.2                  | 585.1                       |                           |                            |
| Highway 96 RT               | 123.7            | 0.306          | 37.9             | 1.317          | 162.9            | 0.0            | 3.4                  | 327.9                       |                           |                            |
| Keller RP                   | 143.2            | 0.178          | 25.5             | 0.957          | 137.1            | 0.0            | 1.4                  | 307.3                       |                           |                            |
| Long Lake RP                | 254.7            | 0.178          | 45.3             | 0.957          | 243.7            | 0.0            | 31.0                 | 574.7                       |                           |                            |
| Rice Creek North RT         | 88.0             | 0.306          | 26.9             | 1.317          | 115.8            | 0.0            | 0.0                  | 230.7                       |                           |                            |
| Rice Creek West RT          | 59.4             | 0.306          | 18.2             | 1.317          | 78.3             | 0.0            | 1.0                  | 156.9                       |                           |                            |
| Tony Schmidt RP             | 147.3            | 0.178          | 26.2             | 0.957          | 140.9            | 0.0            | 3.0                  | 317.4                       |                           |                            |
| Trout Brook RT              | 29.8             | 0.306          | 9.1              | 1.317          | 39.2             | 0.0            | 0.6                  | 78.8                        |                           |                            |
| RP/PR/SRF subtotals         | 1,208.0          |                | 215.0            |                | 1,156.0          | 0.0            | 90.0                 | 2,669.0                     |                           |                            |
| RT subtotals                | 395.0            |                | 120.9            |                | 520.2            | 0.0            | 9.2                  | 1,045.3                     |                           |                            |
| Subtotal:                   | 1,603.0          |                | 335.9            |                | 1,676.2          | 0.0            | 99.2                 | 3,714.3                     | 3,714.3                   |                            |

| Agency/Park                     | Summer           |                | Winter           |                | Spring/Fall      |                | Other *              |                             | Total Visits<br>(1,000's) | O & M Grant<br>Adjustments |
|---------------------------------|------------------|----------------|------------------|----------------|------------------|----------------|----------------------|-----------------------------|---------------------------|----------------------------|
|                                 | visits (1,000's) | use multiplier | visits (1,000's) | use multiplier | visits (1,000's) | use multiplier | Camping<br>(1,000's) | Special Events<br>(1,000's) |                           |                            |
| <b>CITY OF ST. PAUL</b>         |                  |                |                  |                |                  |                |                      |                             |                           |                            |
| Bruce Vento RT                  | 47.2             | 0.306          | 14.5             | 1.317          | 62.2             | 0.0            | 11.4                 | 135.3                       |                           |                            |
| Cherokee Heights RP             | 134.6            | 0.178          | 24.0             | 0.957          | 128.8            | 0.0            | 3.9                  | 291.2                       | Downhill Ski              |                            |
| Como RP, Zoo & Conservatory SRF | 1,466.7          | 0.178          | 261.1            | 0.957          | 1,403.6          | 0.0            | 430.3                | 3,561.7                     | -1.3                      |                            |
| Hidden Falls-Crosby Farm RP     | 193.6            | 0.178          | 34.5             | 0.957          | 185.3            | 0.0            | 9.8                  | 423.2                       |                           |                            |
| Indian Mounds RP                | 72.5             | 0.178          | 12.9             | 0.957          | 69.3             | 0.0            | 7.4                  | 162.1                       |                           |                            |
| Lilydale-Harriet Island RP      | 235.7            | 0.178          | 42.0             | 0.957          | 225.6            | 0.0            | 319.3                | 822.5                       |                           |                            |
| Mississippi Gorge RP            | 412.9            | 0.306          | 126.4            | 1.317          | 543.8            | 0.0            | 18.6                 | 1,101.7                     |                           |                            |
| Phalen RP                       | 366.4            | 0.178          | 65.2             | 0.957          | 350.6            | 0.0            | 81.1                 | 863.3                       |                           |                            |
| Samuel Morgan RT                | 101.5            | 0.306          | 31.1             | 1.317          | 133.7            | 0.0            | 1.0                  | 267.2                       |                           |                            |
| RP/PR/SRF subtotals             | 2,882.4          |                | 565.9            |                | 2,907.1          | 0.0            | 870.3                | 7,225.7                     |                           |                            |
| RT subtotals                    | 148.7            |                | 45.5             |                | 195.9            | 0.0            | 12.4                 | 402.5                       |                           |                            |
| Subtotal:                       | 3,031.1          |                | 611.4            |                | 3,103.0          | 0.0            | 882.7                | 7,628.2                     | 7,626.9                   |                            |

**Notes:**  
 All visits are listed in units of 1,000 (i.e., "50.5" is equivalent to 50,500 visits).  
 RP = Regional Park; PR = Park Reserve; RT = Regional Trail; SRF = Special Recreation Feature  
 \* OTHER: Camping is in "visitor-days," where each visit is one person in the park for one day. A family of four staying one night would have 8 visitor-days. Special events include events over 300 and any unusual park-specific situations. Special events and situations are detailed in Table 2.

## Table 1: 2010 Visitation Estimate

| Agency/Park                       | Summer           |                | Winter           |                | Spring/Fall      |                | Other *              |                             | Total Visits<br>(1,000's) | O & M Grant<br>Adjustments |
|-----------------------------------|------------------|----------------|------------------|----------------|------------------|----------------|----------------------|-----------------------------|---------------------------|----------------------------|
|                                   | visits (1,000's) | use multiplier | visits (1,000's) | use multiplier | visits (1,000's) | use multiplier | Camping<br>(1,000's) | Special Events<br>(1,000's) |                           |                            |
| <b>SCOTT COUNTY</b>               |                  |                |                  |                |                  |                |                      |                             |                           |                            |
| Cedar Lake Farm RP <sup>B 1</sup> | 24.7             | 0.000          | 0.0              |                | 0.160            | 3.9            | 0.0                  | 0.0                         | 28.6                      |                            |
| Scott County RT                   | 108.6            | 0.306          | 33.2             |                | 1.317            | 143.0          | 0.0                  | 0.0                         | 284.9                     |                            |
| RP/PR/SRF subtotals               | 24.7             |                | 0.0              |                | 3.9              |                | 0.0                  | 0.0                         | 28.6                      |                            |
| RT subtotals                      | 108.6            |                | 33.2             |                | 143.0            |                | 0.0                  | 0.0                         | 284.9                     |                            |
| Subtotal:                         | 133.3            |                | 33.2             |                | 147.0            |                | 0.0                  | 0.0                         | 313.5                     | 313.5                      |

| Agency/Park                        | Summer           |                | Winter           |                | Spring/Fall      |                | Other *              |                             | Total Visits<br>(1,000's) | O & M Grant<br>Adjustments |
|------------------------------------|------------------|----------------|------------------|----------------|------------------|----------------|----------------------|-----------------------------|---------------------------|----------------------------|
|                                    | visits (1,000's) | use multiplier | visits (1,000's) | use multiplier | visits (1,000's) | use multiplier | Camping<br>(1,000's) | Special Events<br>(1,000's) |                           |                            |
| <b>THREE RIVERS - SCOTT COUNTY</b> |                  |                |                  |                |                  |                |                      |                             |                           |                            |
| Cleary Lake RP                     | 103.6            | 0.178          | 18.4             |                | 0.957            | 99.1           | 13.6                 | 2.9                         | 237.6                     |                            |
| Murphy-Hanrehan PR                 | 19.9             | 0.178          | 3.5              |                | 0.957            | 19.0           | 0.8                  | 1.5                         | 44.7                      |                            |
| RP/PR/SRF subtotals                | 123.4            |                | 22.0             |                | 118.1            |                | 14.4                 | 4.4                         | 282.3                     |                            |
| RT subtotals                       | 0.0              |                | 0.0              |                | 0.0              |                | 0.0                  | 0.0                         | 0.0                       |                            |
| Three Rivers - Scott Subtotal:     | 123.4            |                | 22.0             |                | 118.1            |                | 14.4                 | 4.4                         | 282.3                     | 282.3                      |

**Notes:**

All visits are listed in units of 1,000 (i.e., "50.5" is equivalent to 50,500 visits).

RP = Regional Park; PR = Park Reserve; RT = Regional Trail; SRF = Special Recreation Feature

\* OTHER: Camping is in "visitor-days," where each visit is one person in the park for one day. A family of four staying one night would have 8 visitor-days. Special events include events over 300 and any unusual park-specific situations. Special events and situations are detailed in Table 2.

<sup>B</sup> 2nd year sampled

<sup>1</sup> The regional park was open for small portion of the fall and spring and closed for the winter, so the seasonal multipliers have been adjusted to reflect summer and fall use.

**Table 1: 2010 Visitation Estimate**

| Agency/Park  | Summer           |                | Winter           |                | Spring/Fall      |                | Other *              |                             | Total Visits<br>(1,000's) | O & M Grant<br>Adjustments |
|--|------------------|----------------|------------------|----------------|------------------|----------------|----------------------|-----------------------------|---------------------------|----------------------------|
|  | visits (1,000's) | use multiplier | visits (1,000's) | use multiplier | visits (1,000's) | use multiplier | Camping<br>(1,000's) | Special Events<br>(1,000's) |                           |                            |
| <b>THREE RIVERS PARK DISTRICT</b>                            |                  |                |                  |                |                  |                |                      |                             |                           |                            |
| Baker PR   | 144.4            | 0.178          | 25.7             | 0.957          | 138.2            |                | 87.3                 | 16.0                        | 411.6                     |                            |
| Bassett Creek RT <sup>B</sup>                                | 38.4             | 0.306          | 11.8             | 1.317          | 50.6             |                | 0.0                  | 0.0                         | 100.8                     |                            |
| Bryant Lake RP   | 197.4            | 0.178          | 35.1             | 0.957          | 188.9            |                | 0.0                  | 0.2                         | 421.6                     |                            |
| Carver PR  | 107.7            | 0.178          | 19.2             | 0.957          | 103.0            |                | 26.4                 | 19.9                        | 276.2                     |                            |
| Cedar Lake LRT RT  | 169.1            | 0.306          | 51.8             | 1.317          | 222.7            |                | 0.0                  | 0.4                         | 444.0                     |                            |
| Clifton French RP  | 213.2            | 0.178          | 37.9             | 0.957          | 204.0            |                | 0.0                  | 7.8                         | 463.0                     |                            |
| Coon Rapids Dam RP   | 127.9            | 0.178          | 22.8             | 0.957          | 122.4            |                | 0.0                  | 5.5                         | 278.7                     |                            |
| Crow-Hassan PR   | 23.5             | 0.178          | 4.2              | 0.957          | 22.5             |                | 4.9                  | 0.7                         | 55.8                      |                            |
| Dakota Rail RT <sup>B</sup>                                  | 156.2            | 0.000          | 0.0              | 1.317          | 205.7            |                | 0.0                  | 2.0                         | 363.9                     |                            |
| Eagle Lake RP  | 27.3             | 0.178          | 4.9              | 0.957          | 26.1             |                | 0.0                  | 0.0                         | 58.3                      |                            |
| Elm Creek PR   | 325.8            | 0.178          | 58.0             | 0.957          | 311.8            |                | 2.8                  | 118.9                       | 817.2                     |                            |
| Fish Lake RP   | 66.2             | 0.178          | 11.8             | 0.957          | 63.4             |                | 0.0                  | 0.2                         | 141.5                     |                            |
| Gale Woods SRF   | 32.3             | 0.178          | 5.8              | 0.957          | 30.9             |                | 0.0                  | 24.7                        | 93.7                      | Downhill ski<br>-168.7     |
| Hyland Lake PR   | 252.4            | 0.178          | 44.9             | 0.957          | 241.5            |                | 3.8                  | 204.8                       | 747.5                     |                            |
| Lake Independence RT   | 14.4             | 0.306          | 4.4              | 1.317          | 19.0             |                | 0.0                  | 0.0                         | 37.9                      |                            |
| Lake Minnetonka RP   | 126.0            | 0.178          | 22.4             | 0.957          | 120.6            |                | 0.0                  | 4.4                         | 273.4                     |                            |
| Lake Minnetonka Islands RP <sup>1</sup>                      | 65.0             | n/a            | 0.0              | n/a            | 0.0              |                | 0.0                  | 0.0                         | 65.0                      |                            |
| Lake Minnetonka LRT RT                                       | 133.1            | 0.306          | 40.7             | 1.317          | 175.2            |                | 0.0                  | 2.0                         | 351.0                     |                            |
| Lake Rebecca PR  | 78.2             | 0.178          | 13.9             | 0.957          | 74.8             |                | 5.2                  | 6.5                         | 178.7                     |                            |
| Luce Line RT   | 72.1             | 0.306          | 22.1             | 1.317          | 94.9             |                | 0.0                  | 0.0                         | 189.1                     |                            |
| Medicine Lake RT   | 138.5            | 0.306          | 42.4             | 1.317          | 182.4            |                | 0.0                  | 2.0                         | 365.3                     |                            |
| Minnesota River Bluffs LRT RT                                | 112.7            | 0.306          | 34.5             | 1.317          | 148.5            |                | 0.0                  | 0.0                         | 295.7                     |                            |
| Noerenberg Gardens SRF                                       | 27.3             | 0.000          | 0.0              | 0.957          | 26.2             |                | 0.0                  | 0.0                         | 53.5                      |                            |
| North Cedar Lake RT  | 171.6            | 0.306          | 52.5             | 1.317          | 226.0            |                | 0.0                  | 0.0                         | 450.1                     |                            |
| North Mississippi RP   | 21.0             | 0.178          | 3.7              | 0.957          | 20.1             |                | 0.0                  | 6.6                         | 51.4                      |                            |
| Northeast Diagonal RT <sup>B</sup>                           | 18.9             | 0.306          | 5.8              | 1.317          | 24.9             |                | 0.0                  | 0.0                         | 49.6                      |                            |
| Rush Creek RT  | 115.9            | 0.306          | 35.5             | 1.317          | 152.6            |                | 0.0                  | 1.3                         | 305.3                     |                            |
| Shingle Creek RT   | 39.3             | 0.306          | 12.0             | 1.317          | 51.7             |                | 0.0                  | 0.0                         | 103.0                     |                            |
| Silverwood SRF   | 91.5             | 0.178          | 16.3             | 0.957          | 87.6             |                | 0.0                  | 8.7                         | 204.1                     |                            |
| RP/PR/SRF subtotals  | 1,927.1          |                | 326.6            |                | 1,782.0          |                | 130.5                | 432.6                       | 4,591.0                   |                            |
| RT subtotals   | 1,180.2          |                | 313.4            |                | 1,554.4          |                | 0.0                  | 0.0                         | 3,055.7                   |                            |
| Three Rivers Subtotal:                                       | 3,107.3          |                | 639.9            |                | 3,336.4          |                | 130.5                | 432.6                       | 7,646.7                   | 7,478.0                    |
|  |                  |                | 3,107.3          |                |                  |                |                      |                             |                           |                            |
| Three Rivers-Scott & Three Rivers Park<br>District Subtotal: | <b>3,230.7</b>   |                | <b>661.9</b>     |                | <b>3,454.5</b>   |                | <b>144.8</b>         | <b>437.0</b>                | <b>7,929.0</b>            | <b>7,760.3</b>             |

**Notes:**  
**All visits are listed in units of 1,000 (i.e., "50.5" is equivalent to 50,500 visits).**  
 RP = Regional Park; PR = Park Reserve; RT = Regional Trail; SRF = Special Recreation Feature  
 \* OTHER: Camping is in "visitor-days," where each visit is one person in the park for one day. A family of four staying one night would have 8 visitor-days. Special events include events over 300 and any unusual park-specific situations. Special events and situations are detailed in Table 2.  
<sup>1</sup> Lake Minnetonka Islands total annual visitation data is provided from Three Rivers and is not based on the Metropolitan Council sample.  
<sup>B</sup> 2nd year sampled

### Table 1: 2010 Visitation Estimate

| Agency/Park              | Summer           | Winter         |                  | Spring/Fall    |                  | Other *              |                             | Total Visits<br>(1,000's) | O & M Grant<br>Adjustments |
|--------------------------|------------------|----------------|------------------|----------------|------------------|----------------------|-----------------------------|---------------------------|----------------------------|
|                          | visits (1,000's) | use multiplier | visits (1,000's) | use multiplier | visits (1,000's) | Camping<br>(1,000's) | Special Events<br>(1,000's) |                           |                            |
| <b>WASHINGTON COUNTY</b> |                  |                |                  |                |                  |                      |                             |                           |                            |
| Big Marine PR            | 110.6            | 0.178          | 19.7             | 0.957          | 105.9            | 0.0                  | 3.5                         | 239.7                     |                            |
| Cottage Grove Ravine RP  | 28.1             | 0.178          | 5.0              | 0.957          | 26.9             | 0.0                  | 3.5                         | 63.5                      |                            |
| Hardwood Creek RT        | 108.1            | 0.306          | 33.1             | 1.317          | 142.4            | 0.0                  | 0.3                         | 283.8                     |                            |
| Lake Elmo PR             | 217.5            | 0.178          | 38.7             | 0.957          | 208.1            | 27.4                 | 10.6                        | 502.3                     |                            |
| Pine Point RP            | 42.0             | 0.178          | 7.5              | 0.957          | 40.2             | 0.0                  | 1.3                         | 90.9                      |                            |
| Square Lake SRF          | 37.2             | 0.000          | 0.0              | 0.957          | 35.6             | 0.0                  | 2.3                         | 75.0                      |                            |
| St. Croix Bluffs RP      | 56.4             | 0.178          | 10.0             | 0.957          | 54.0             | 15.6                 | 3.0                         | 139.0                     |                            |
| RP/PR/SRF subtotals      | 491.7            |                | 80.9             |                | 470.6            | 43.0                 | 24.2                        | 1,110.4                   |                            |
| RT subtotals             | 108.1            |                | 33.1             |                | 142.4            | 0.0                  | 0.3                         | 283.8                     |                            |
| Subtotal:                | 599.8            |                | 114.0            |                | 613.0            | 43.0                 | 24.5                        | 1,394.3                   | 1,394.3                    |

### REGIONAL TOTALS

| Agency/Park            | Summer           | Winter           | Spring/Fall      | Other *              |                             | Total Visits<br>(1,000's) | O & M Grant<br>Adjustments |
|------------------------|------------------|------------------|------------------|----------------------|-----------------------------|---------------------------|----------------------------|
|                        | visits (1,000's) | visits (1,000's) | visits (1,000's) | Camping<br>(1,000's) | Special Events<br>(1,000's) |                           |                            |
| RP/PR/SRF subtotals    | 13,014.0         | 2,544.1          | 12,880.9         | 319.7                | 2,369.2                     | 31,120.1                  |                            |
| RT subtotals           | 3,715.5          | 1,089.2          | 4,893.4          | 0.0                  | 41.6                        | 9,747.4                   |                            |
| <b>REGIONAL TOTALS</b> | <b>16,729.5</b>  | <b>3,633.2</b>   | <b>17,774.3</b>  | <b>319.7</b>         | <b>2,410.8</b>              | <b>40,867.5</b>           | <b>40,575.1</b>            |

**Notes:**

All visits are listed in units of 1,000 (i.e., "50.5" is equivalent to 50,500 visits).

RP = Regional Park; PR = Park Reserve; RT = Regional Trail; SRF = Special Recreation Feature

\* OTHER: Camping is in "visitor-days," where each visit is one person in the park for one day. A family of four staying one night would have 8 visitor-days. Special events include events over 300 and any unusual park-specific situations. Special events and situations are detailed in Table 2.

## Table 2: Special event counts for 2010

(Note: these events occurred at times that were specifically not sampled to avoid double-counting)

| Agency/Park                           | Date        | Event   | Visits<br>(1,000s) |
|---------------------------------------|-------------|---|--------------------|
| <b>ANOKA COUNTY:</b>                  |             |   |                    |
| <b>Anoka Co. Riverfront RP</b>        |             | <b>None</b>   | <b>-</b>           |
| <b>Bunker Hills RP</b>                |             | <b>TOTAL:</b>   | <b>228.5</b>       |
|                                       | Apr 17      | North Suburban Striders   | 0.4                |
|                                       | May 29      | Veteran's Memorial Day Event                                    | 0.5                |
|                                       | May 30      | Seim/Listberger Wedding Reception                               | 0.3                |
|                                       | May 23      | Baby Angels   | 0.6                |
|                                       | May 31      | Memorial Day Event  | 0.4                |
|                                       | Jun 11      | Grand Opening Event   | 1.9                |
|                                       | Jun 28-30   | Girl Scout Camp   | 0.3                |
|                                       | Jul 2       | Vang Family Reunion   | 0.3                |
|                                       | Jul 12      | Med Rad Company Picnic  | 0.3                |
|                                       | Jul 18      | Pure Romance Family Picnic                                      | 0.3                |
|                                       | Aug 7       | Carpenter's Local 851   | 0.3                |
|                                       | Aug 8       | Emmanuel Christian Center                                       | 0.3                |
|                                       | Aug 15      | Anoka County Employees Club                                     | 0.4                |
|                                       | Aug 21      | Loubert Wedding   | 0.3                |
|                                       | Aug 27      | Uran Wedding  | 0.3                |
|                                       | Aug 28      | Huelscamp Wedding   | 0.3                |
|                                       | Sep 11      | DFL Fall Festival Event   | 0.3                |
|                                       | Sep 12      | Bunker Prairie Festival   | 1.4                |
|                                       | Sep 25      | Alexandra House Walk  | 0.6                |
|                                       | Oct 9       | Beckey Wedding  | 0.3                |
|                                       | May-July    | Natural Resources Workshop                                      | 6.0                |
|                                       | Winter      | Cross Country Ski Team Meets                                    | 1.7                |
|                                       | Summer Long | Bunker Beach Visitation   | 122.4              |
|                                       | Summer Long | Bunker Park Stables Usage (entrance not part of regular counts) | 24.7               |
|                                       | Year Long   | Activity Center Usage (entrance not part of regular counts)     | 47.4               |
|                                       | Year Long   | Archery Center Use (entrance not part of regular counts)        | 16.5               |
| <b>Central Anoka RT</b>               |             | <b>None</b>   | <b>-</b>           |
| <b>Coon Rapids Dam RP</b>             |             | <b>TOTAL:</b>   | <b>17.7</b>        |
|                                       | Apr 17      | Anoka Hennepin Education Foundation                             | 1.0                |
|                                       | May 1       | Randy Bauer Run   | 0.3                |
|                                       | May 3       | Volunteer Planting Event  | 0.4                |
|                                       | May 15      | Adventures Plus Reunion   | 0.7                |
|                                       | May 16      | Kruschke Wedding  | 0.3                |
|                                       | Jan 15      | Trout Opener  | 0.5                |
|                                       | Jun 10      | Concert in the Park   | 2.2                |
|                                       | Jun 17      | Concert in the Park   | 2.2                |
|                                       | Jun 24      | Concert in the Park   | 2.0                |
|                                       | Jun 26      | Du at the Dam   | 0.3                |
|                                       | Jun 30      | Adventures Plus   | 0.3                |
|                                       | Jul 8       | Concert in the Park   | 1.0                |
|                                       | Jul 15      | Concert in the Park   | 1.3                |
|                                       | Jul 22      | Concert in the Park   | 1.6                |
|                                       | Jul 20      | Hortman Wedding   | 0.3                |
|                                       | Jul 29      | Concert in the Park   | 1.6                |
|                                       | Jul 31      | Peak Adventures   | 0.3                |
|                                       | Sep 5       | Twin Cities Hmong Alliance                                      | 0.3                |
|                                       | Sep 10      | Missing Grace   | 0.9                |
|                                       | Sep 26      | St. Stephen's School Marathon                                   | 0.3                |
| <b>Lake George RP</b>                 |             | <b>TOTAL:</b>   | <b>7.6</b>         |
|                                       | May 19      | St Francis High School  | 0.4                |
|                                       | May 29      | St Francis High School  | 0.4                |
|                                       | Jun 26      | YMCA Event  | 0.3                |
|                                       | Jul 3       | Minneman Triathlon  | 0.7                |
|                                       | Jul 10      | YMCA Event  | 0.3                |
|                                       | Jul 24      | YMCA Event  | 0.3                |
|                                       | Dec 11      | Snow Ghosts Snowmobile Testing                                  | 0.3                |
|                                       | Summer Long | YMCA Camps  | 1.7                |
|                                       | Winter      | Snowmobile Use through park                                     | 3.2                |
| <b>Martin-Island-Linwood Lakes RP</b> |             | <b>TOTAL:</b>   | <b>9.3</b>         |
|                                       | Winter      | Snowmobile Use through park                                     | 2.7                |
|                                       | Year Long   | Camp Salie Usage  | 6.6                |
| <b>Mississippi River RT</b>           |             | <b>None</b>   | <b>-</b>           |

## Table 2: Special event counts for 2010

(Note: these events occurred at times that were specifically not sampled to avoid double-counting)

| Agency/Park                      | Date        | Event   | Visits<br>(1,000s) |
|----------------------------------|-------------|---|--------------------|
| <b>ANOKA COUNTY: continued</b>   |             |   |                    |
| <b>Rice Creek Chain PR</b>       |             | <b>TOTAL:</b>                                   | <b>55.3</b>        |
|                                  | Jan 30      | Snow Day  | 0.5                |
|                                  | Apr 24      | Earth Day                                       | 0.5                |
|                                  | Jun 26      | CMA Group                                       | 0.3                |
|                                  | Aug 7       | Centerville Park and Rec Event                  | 0.4                |
|                                  | Sep 11-12   | Hay Days  | 0.6                |
|                                  | Nov 13      | Diva Dash                                       | 0.6                |
|                                  | Winter      | Snowmobile Use through park                     | 2.5                |
|                                  | Summer Long | YMCA Day Camp                                   | 1.2                |
|                                  | Year Long   | Wargo Nature Center Attendance                  | 48.7               |
| <b>Rice Creek North RT</b>       |             | <b>None</b>                                     | -                  |
| <b>Rice Creek West RT</b>        |             | <b>None</b>                                     | -                  |
| <b>Rum River Central RP</b>      |             | <b>None</b>                                     | -                  |
| <b>BLOOMINGTON:</b>              |             |   |                    |
| <b>Bush and Normandale Lakes</b> |             | <b>TOTAL:</b>                                   | <b>55.5</b>        |
|                                  | Jun 12      | Make a Wish Foundation Walk                     | 0.5                |
|                                  | Jun 15      | MN Symphonic Winds Concert                      | 0.4                |
|                                  | Jun 27      | Sandcastles Event                               | 0.4                |
|                                  | Jun 28      | Bandshell rental                                | 0.4                |
|                                  | Jul 3       | Summer Fete                                     | 40.0               |
|                                  | Jul 8       | Monroe Crossing Concert                         | 0.5                |
|                                  | Jul 11      | Bandshell Rental                                | 0.5                |
|                                  | Jul 9       | Movie in the Park                               | 0.3                |
|                                  | Jul 15      | 80's Music Event                                | 2.0                |
|                                  | Jul 17      | Bandshell Rental                                | 0.3                |
|                                  | Jul 22      | Latin Music Event                               | 0.7                |
|                                  | Jul 29      | Blues and Bar-B-Q                               | 2.3                |
|                                  | Aug 5       | Rock Show                                       | 0.5                |
|                                  | Aug 6       | Movie in the Park                               | 0.8                |
|                                  | Aug 7       | Bandshell Rental                                | 0.8                |
|                                  | Aug 8       | Jazz Festival                                   | 0.3                |
|                                  | Aug 14      | American Cancer Society Walk                    | 1.0                |
|                                  | Aug 18      | Bandshell Rental                                | 0.3                |
|                                  | Sep 24      | Iron Girl Duathlon                              | 1.0                |
|                                  | Sep 11      | United Mitochondrial Disease Foundation Walk    | 0.7                |
|                                  | Sep 18      | PKD Foundation Walk                             | 0.4                |
|                                  | Sep 19      | Annual Walk to Live and Breathe                 | 0.5                |
|                                  | Sep 19      | Haiti Mission Project Walk                      | 0.3                |
|                                  | Oct 2       | Bandshell Rental                                | 0.3                |
|                                  | Oct 16      | Pacer Center Run/Walk                           | 0.4                |
| <b>CARVER COUNTY:</b>            |             |   |                    |
| <b>Baylor RP</b>                 |             | <b>TOTAL:</b>                                   | <b>6.3</b>         |
|                                  | Aug 29      | Running Meet                                    | 0.4                |
|                                  | Sep 08      | Running Meet                                    | 1.5                |
|                                  | All year    | Onan Observatory (late evening use)             | 3.9                |
|                                  | All year    | School Groups                                   | 0.5                |
| <b>Lake Minnewashta RP</b>       |             | <b>TOTAL:</b>                                   | <b>4.8</b>         |
|                                  | May 22      | Tonka Waters Girl Scout Camp                    | 0.3                |
|                                  | Jul 04      | Fireworks                                       | 0.8                |
|                                  | Jul 28-31   | Rive Bluff Girl Scout Jamboree Week 1 (410/day) | 1.6                |
|                                  | Aug 4-7     | Rive Bluff Girl Scout Jamboree Week 2 (450/day) | 1.8                |
|                                  | Sep 19      | Tonka Waters Girl Scout Camp - Fall             | 0.3                |
| <b>Lake Waconia RP</b>           |             | <b>TOTAL:</b>                                   | <b>12.1</b>        |
|                                  | Jan 30      | Vintage Snowmobile                              | 4.5                |
|                                  | Jan 31      | Vintage Snowmobile                              | 2.8                |
|                                  | Jun 27      | Triathlon                                       | 1.8                |
|                                  | Jul 04      | 4th of July celebration                         | 3.0                |

## Table 2: Special event counts for 2010

(Note: these events occurred at times that were specifically not sampled to avoid double-counting)

| Agency/Park                                     | Date | Event   | Visits<br>(1,000s) |
|---|------|---|--------------------|
| <b>DAKOTA COUNTY:</b>                           |      |   |                    |
| Big Rivers RT                                   |      | None  | -                  |
| Lake Byllesby RP                                |      | None  | -                  |
| Lebanon Hills RP                                |      | <b>TOTAL:</b>   | <b>59.0</b>        |
| Summer  |      | Adventure Ropes Course  | 1.8                |
| School year                                     |      | VC school groups  | 2.8                |
| All year  |      | Outdoor Education Programs  | 5.0                |
| Feb 6   |      | Trails by Candlelight   | 0.7                |
| Feb 25  |      | School of Environmental Studies Eco-Challenge   | 0.4                |
| Jun 10  |      | School of Environmental Studies Eco-Challenge   | 0.4                |
| Dec 31  |      | NYE Event (cancelled due to weather, estimated attendance would have been 900 - 1,000)        | -                  |
| Year round                                      |      | Camp Sacajawea (day camp and permit only - not counted in regular counts)                     | 47.9               |
| Miesville Ravine PR                             |      | None  | -                  |
| Mississippi River RT                            |      | None  | -                  |
| North Urban RT                                  |      | None  | -                  |
| Spring Lake PR                                  |      | <b>TOTAL:</b>   | <b>13.5</b>        |
| Aug 5   |      | Lifesource Picnic   | 0.3                |
| All Year  |      | Outdoor Education Programs  | 0.8                |
| Year round                                      |      | Spring Lake Youth Camp (day camp and permit only - not counted in regular counts)             | 12.4               |
| <b>MINNEAPOLIS PARK &amp; RECREATION BOARD:</b> |      |   |                    |
| Cedar Lake RT                                   |      | None  | -                  |
| Central Mississippi Riverfront RP               |      | <b>TOTAL</b>  | <b>181.2</b>       |
| Mar 20  |      | Get Lucky & Run Race (split Central Mississippi RP, Mississippi Gorge RP)                     | 1.3                |
| Apr 19  |      | U of Minnesota Law Run / Main Street & Stone Arch   | 0.8                |
| Apr 25  |      | March of Dimes March for Babies (split Central Mississippi RP, Mississippi Gorge RP)          | 3.5                |
| Jun 6   |      | Minneapolis Marathon (split Central Mississippi RP, Mississippi Gorge RP, Minnehaha Pkwy RT ) | 2.0                |
| Jun 7   |      | Concert at Father Hennepin Bluffs   | 0.3                |
| Jun 12  |      | Dog Day 5K (split Central Mississippi RP, Mississippi Gorge RP)                               | 0.2                |
| Jun 19 - 20                                     |      | Stone Arch Festival of the Arts   | 70.0               |
| Jun 20  |      | Solstice River Performance - Stone Arch Bridge  | 1.0                |
| Jun 26  |      | Pacemaker 5000 (split Central Mississippi RP, Mississippi Gorge RP)                           | 0.4                |
| Jul 3   |      | Movie   | 0.6                |
| Jul 4   |      | Mpls Red, White & Boom (split Central Mississippi RP, Mississippi Gorge RP)                   | 15.0               |
| Jul 4   |      | Red White & Boom 1/2 Marathon (split Central Mississippi RP, Mississippi Gorge RP)            | 7.5                |
| Jul 21  |      | Torchlight Run (split Central Mississippi RP, Mississippi Gorge RP)                           | 4.5                |
| Jul 24  |      | Aquatennial Fireworks   | 50.0               |
| Jul 24  |      | Company Picnic- Boom Island   | 2.0                |
| Jul 24  |      | Mississippi River Challenge - Bassett's Creek - Rowing Club                                   | 0.4                |
| Aug 14 - 15                                     |      | TC Polish Festival  | 8.0                |
| Aug 21  |      | Ragnar Relay/Boom Island  | 3.0                |
| Aug 21  |      | Night Owl Classic (split Central Mississippi RP, Mississippi Gorge RP--Mpls & St Paul)        | 0.2                |
| Aug 22  |      | 13.1 Minneapolis Run (split Central Mississippi RP, Mississippi Gorge RP, Minnehaha Pkwy)     | 1.2                |
| Aug 24  |      | Picnic- Boom Island   | 0.7                |
| Aug 29  |      | Downtown Dualthon - (split Central Mississippi RP, Mississippi Gorge RP)                      | 1.5                |
| Aug 10 - 12                                     |      | Oktoberfest - Main St Parkway   | 5.0                |
| Sep 6   |      | Keith Ellison Event   | 0.4                |
| Sep 11  |      | James Page 5K (split Central Mississippi RP, Mississippi Gorge RP)                            | 0.8                |
| Sep 18  |      | Special Olympics 5K (split Central Mississippi RP, Mississippi Gorge RP)                      | 0.5                |
| Sep 26  |      | MS Challenge (split Central Mississippi RP, Mississippi Gorge RP--Mpls & St Paul)             | 0.2                |
| Oct 9   |      | Historic Riverfront 5K Run Walk (split Central Mississippi RP, Mississippi Gorge RP)          | 0.3                |
| Columbia Parkway RT                             |      | None  | -                  |
| Kenilworth RT                                   |      | None  | -                  |
| Luce Line RT                                    |      | None  | -                  |

## Table 2: Special event counts for 2010

(Note: these events occurred at times that were specifically not sampled to avoid double-counting)

| Agency/Park  | Date        | Event  | Visits<br>(1,000s) |
|--|-------------|--|--------------------|
| <b>MINNEAPOLIS PARK &amp; RECREATION BOARD: <i>continued</i></b> |             |  |                    |
| <b>Minneapolis Chain-of-Lakes RP</b>                             |             | <b>TOTAL</b>   | <b>160.8</b>       |
|  | Jan 21 - 24 | Loppet (split Chain of Lakes and Theodore Wirth RP, Wirth Memorial Pkwy) | 0.3                |
|  | Feb 13      | Valentine's Run/Lake Harriet   | 1.0                |
|  | Feb 20      | Red Bull Open Ice Pond Hockey/Lake Calhoun                               | 0.6                |
|  | Mar 6       | Minneapolis Polar Bear Plunge/Lake Calhoun                               | 4.5                |
|  | Mar 13      | Irish 5K/Lake Harriet  | 2.7                |
|  | Apr 18      | Recycle Run/Lake Harriet   | 0.5                |
|  | May 1       | Cystic Fibrosis Walk a Thon/Lake Calhoun                                 | 1.0                |
|  | May 15      | Autism awareness walk  | 0.9                |
|  | May 21      | SW High Concert/Lake Harriet   | 0.3                |
|  | May 24      | SW High Concert/Lake Harriet   | 0.3                |
|  | May 25      | SW High Concert/Lake Harriet   | 0.3                |
|  | May 26      | SW High Concert/Lake Harriet   | 0.3                |
|  | May 28      | Healthy Nations Canoe Event/Lake Calhoun                                 | 0.4                |
|  | May 30      | Outdoor Church Service/LHB   | 0.5                |
|  | May 31      | Concert  | 2.0                |
|  | Jun 1       | Concert  | 0.3                |
|  | Jun 2       | Concert  | 0.3                |
|  | Jun 3       | Concert  | 0.3                |
|  | Jun 4       | Concert  | 0.3                |
|  | Jun 5       | Concert  | 0.8                |
|  | Jun 4       | Barton School - 8th Grade graduation                                     | 0.8                |
|  | Jun 5       | Tour de Cure (split Chain of Lakes, Minnehaha Pkwy, Minnehaha RP)        | 0.3                |
|  | Jun 6       | Concert  | 0.9                |
|  | Jun 7       | Concert  | 0.4                |
|  | Jun 6       | Outdoor Church Service/LHB   | 0.5                |
|  | Jun 8       | Concert  | 0.3                |
|  | Jun 9       | Concert  | 0.4                |
|  | Jun 10      | Concert  | 0.4                |
|  | Jun 11      | Wedding  | 0.3                |
|  | Jun 11      | Concert  | 0.8                |
|  | Jun 12      | Walk for Lupus - Lake Calhoun  | 0.4                |
|  | Jun 12      | Concert  | 0.7                |
|  | Jun 13      | Concert  | 0.3                |
|  | Jun 14      | Concert  | 0.5                |
|  | Jun 13      | Outdoor Church Service/ Lake Harriet Bandshell                           | 0.5                |
|  | Jun 15      | Concert  | 0.7                |
|  | Jun 16      | Concert  | 0.6                |
|  | Jun 17      | Concert  | 0.4                |
|  | Jun 18      | Concert  | 1.0                |
|  | Jun 19      | Kids Against Hunger Walk/ Lake Calhoun                                   | 0.6                |
|  | Jun 19      | Concert  | 0.8                |
|  | Jun 20      | Concert  | 1.5                |
|  | Jun 20      | Outdoor Church Service/ Lake Harriet Bandshell                           | 0.5                |
|  | Jun 21      | Concert  | 0.5                |
|  | Jun 22      | Concert  | 1.1                |
|  | Jun 23      | Concert  | 0.6                |
|  | Jun 24      | Concert  | 1.0                |
|  | Jun 25      | Concert  | 0.7                |
|  | Jun 26      | Concert  | 0.4                |
|  | Jun 27      | Concert  | 0.6                |
|  | Jun 27      | Tri-Loppet (split Chain of Lakes RP, Theodore Wirth RP)                  | 0.1                |
|  | Jun 27      | Outdoor Church Service -   | 0.5                |
|  | Jun 27      | Concert  | 1.0                |
|  | Jun 28      | Concert  | 2.5                |
|  | Jun 29      | Concert  | 1.3                |
|  | Jun 30      | Concert  | 0.6                |
|  | Jul 1       | Concert  | 0.7                |
|  | Jul 2       | Movie  | 2.0                |
|  | Jul 3       | Concert  | 1.2                |
|  | Jul 3       | Concert  | 2.3                |
|  | Jul 4       | Concert  | 2.5                |
|  | Jul 4       | Outdoor Church Service/LHB   | 0.3                |
|  | Jul 6       | Concert  | 1.2                |
|  | Jul 7       | Concert  | 0.9                |
|  | Jul 8       | Concert  | 1.3                |
|  | Jul 9       | Concert  | 0.5                |
|  | Jul 10      | Concert  | 0.7                |
|  | Jul 10      | Concert  | 2.5                |
|  | Jul 11      | Concert  | 1.5                |
|  | Jul 10      | Triathlon (split Chain of Lakes RP, Minnehaha Pkwy, Nokomis-Hiawatha RP, |                    |
|  | Jul 11      | Mississippi Gorge RP--Mpls & St Paul)                                    | 0.5                |
|  | Jul 11      | Outdoor Church Service/LHB   | 0.5                |
|  | Jul 11      | Concert  | 2.2                |
|  | Jul 12      | Concert  | 0.6                |
|  | Jul 13      | Concert  | 1.1                |

## Table 2: Special event counts for 2010

(Note: these events occurred at times that were specifically not sampled to avoid double-counting)

| Agency/Park   | Date   | Event  | Visits<br>(1,000s) |
|---|--------|--|--------------------|
| <b>MINNEAPOLIS PARK &amp; RECREATION BOARD: continued</b> |        |  |                    |
| <b>Minneapolis Chain of Lakes RP, continued</b>           |        |  |                    |
|   | Jul 14 | Concert  | 0.6                |
|   | Jul 15 | Concert  | 0.4                |
|   | Jul 16 | Concert  | 1.5                |
|   | Jul 17 | Concert  | 0.3                |
|   | Jul 18 | Concert  | 1.5                |
|   | Jul 18 | Aquatennial Beach Bash/ Lake Calhoun   | 6.0                |
|   | Jul 18 | Outdoor Church Service/LHB   | 0.5                |
|   | Jul 18 | Concert  | 3.0                |
|   | Jul 19 | Concert  | 0.3                |
|   | Jul 20 | Concert  | 0.3                |
|   | Jul 21 | Concert  | 1.0                |
|   | Jul 22 | Concert  | 0.4                |
|   | Jul 23 | Concert  | 1.0                |
|   | Jul 24 | Concert  | 2.3                |
|   | Jul 25 | Concert  | 0.5                |
|   | Jul 25 | Outdoor Church Services  | 0.5                |
|   | Jul 26 | Concert  | 0.3                |
|   | Jul 27 | Concert  | 0.3                |
|   | Jul 28 | Concert  | 1.1                |
|   | Jul 29 | Concert  | 0.3                |
|   | Jul 30 | Concert  | 0.4                |
|   | Jul 31 | Concert  | 2.6                |
|   | Aug 1  | Concert  | 0.8                |
|   | Aug 1  | Outdoor Church Service / LHB   | 0.5                |
|   | Aug 2  | Concert  | 3.0                |
|   | Aug 1  | Hennepin - Lake Classic  | 0.7                |
|   | Aug 3  | Concert  | 3.0                |
|   | Aug 4  | Concert  | 0.8                |
|   | Aug 5  | Concert  | 1.0                |
|   | Aug 6  | Concert  | 1.2                |
|   | Aug 7  | Movie - Top Gun  | 0.8                |
|   | Aug 7  | Concert  | 0.5                |
|   | Aug 8  | Concert  | 0.8                |
|   | Aug 7  | Hagen Financial Advantage 5K Fun Run / Lake Harriet                              | 0.4                |
|   | Aug 8  | Concert  | 0.7                |
|   | Aug 9  | Concert  | 0.5                |
|   | Aug 8  | Outdoor Church Service   | 0.5                |
|   | Aug 10 | Concert  | 0.3                |
|   | Aug 11 | Concert  | 0.6                |
|   | Aug 12 | Concert  | 0.4                |
|   | Aug 13 | Concert  | 0.5                |
|   | Aug 14 | Concert  | 0.5                |
|   | Aug 15 | Concert  | 0.9                |
|   | Aug 16 | Concert  | 0.3                |
|   | Aug 15 | Outdoor Church Service / LHB   | 0.5                |
|   | Aug 15 | Domestic Violence Awareness Walk/ Lake Calhoun                                   | 0.3                |
|   | Aug 16 | Concert  | 0.3                |
|   | Aug 17 | Concert  | 0.6                |
|   | Aug 18 | Concert  | 0.3                |
|   | Aug 19 | Concert  | 0.4                |
|   | Aug 20 | Concert  | 1.2                |
|   | Aug 21 | Concert  | 1.0                |
|   | Aug 20 | TC Breast Cancer 3-day (split Chain of Lakes, Mississippi Gorge-Mpls & St. Paul) | 1.1                |
|   | Aug 21 | Walk for Food Allergy/ Lake Calhoun  | 0.5                |
|   | Aug 22 | Concert  | 1.2                |
|   | Aug 22 | Outdoor Church Service   | 0.5                |
|   | Aug 22 | Wheels of Italy- Calhoun Executive Lot   | 1.2                |
|   | Aug 23 | Concert  | 7.0                |
|   | Aug 24 | Concert  | 0.3                |
|   | Aug 25 | Concert  | 0.3                |
|   | Aug 26 | Concert  | 0.4                |
|   | Aug 27 | Picnic   | 0.5                |
|   | Aug 27 | Concert  | 1.0                |
|   | Aug 28 | Concert  | 1.1                |
|   | Aug 29 | Concert  | 0.8                |
|   | Aug 29 | Outdoor Church Service - LHB   | 0.5                |
|   | Aug 30 | Concert  | 0.5                |
|   | Aug 31 | Concert  | 0.3                |
|   | Sep 1  | Concert  | 0.4                |
|   | Sep 2  | Concert  | 0.6                |
|   | Sep 3  | Concert  | 1.4                |
|   | Sep 4  | Concert  | 0.8                |
|   | Sep 5  | Concert  | 0.8                |
|   | Sep 5  | Outdoor Church Service - LHB   | 0.5                |

## Table 2: Special event counts for 2010

(Note: these events occurred at times that were specifically not sampled to avoid double-counting)

| Agency/Park   | Date   | Event  | Visits<br>(1,000s) |
|---|--------|--|--------------------|
| <b>MINNEAPOLIS PARK &amp; RECREATION BOARD: continued</b> |        |  |                    |
| <b>Minneapolis Chain of Lakes RP, continued</b>           |        |  |                    |
|   | Sep 11 | Concert  | 2.0                |
|   | Sep 11 | TC Fun and Run Walk - Lake Harriet   | 0.5                |
|   | Sep 12 | C of L 25 K & Harriet Bandshell 5K - Lakes Harriet and Calhoun   | 1.7                |
|   | Sep 18 | Annunciation School Marathon   | 0.5                |
|   | Sep 19 | Minneapolis Tour (split Chain of Lakes, Minnehaha RT, Minnehaha RP, Mississippi Gorge RP, Nokomis- Hiawatha, Theodore Wirth, Wirth Memorial) | 0.5                |
|   | Sep 25 | Made in the Shade walk - Lake Calhoun  | 0.6                |
|   | Sep 25 | Walk to defeat ALS/Harriet   | 2.0                |
|   | Sep 26 | Vision Walk - Lake Harriet   | 0.7                |
|   | Oct 4  | Twin Cities Marathon & TC 10 (split Chain of Lakes, Nokomis-Hiawatha, Minnehaha Pkwy, Mississippi Gorge--Mpls & St Paul)                     | 9.0                |
|   | Oct 9  | City of Lakes Waldorf School Bike-A-Thon / Lake Harriet  | 0.3                |
|   | Oct 16 | MN Teen Challenge Walk-A-Thon/ Lake Harriet  | 1.0                |
|   | Oct 17 | Police Dept. Running With the Law / Lake Harriet   | 0.3                |
|   | Oct 30 | Team Ortho Monster Dash & Half Marathon (split Chain of Lakes, Minnehaha Pkwy)   | 4.0                |
|   | Nov 25 | Drumstick Dash - Lake Harriet  | 0.8                |
|   | Dec 4  | Reindeer Run   | 2.2                |
| <b>Minnehaha Parkway RT</b>                               |        | <b>TOTAL</b>   | <b>17.5</b>        |
|   | Jun 5  | Tour de Cure (split Chain of Lakes, Minnehaha Pkwy, Minnehaha RP)  | 0.3                |
|   | Jun 6  | Minneapolis Marathon (split Central Mississippi RP, Mississippi Gorge RP, Minnehaha Pkwy RT )  | 2.0                |
|   | Jul 10 | Triathlon (split Chain of Lakes RP, Minnehaha Pkwy, Nokomis-Hiawatha RP, Mississippi Gorge RP--Mpls & St Paul)                               | 0.5                |
|   | Aug 22 | 13.1 Minneapolis Run (split Central Mississippi RP, Mississippi Gorge RP, Minnehaha Pkwy)  | 1.2                |
|   | Sep 19 | Minneapolis Tour (split Chain of Lakes, Minnehaha RT, Minnehaha RP, Mississippi Gorge RP, Nokomis- Hiawatha, Theodore Wirth, Wirth Memorial) | 0.5                |
|   | Oct 3  | Twin Cities Marathon & TC 10 (split Chain of Lakes, Nokomis-Hiawatha, Minnehaha Pkwy, Mississippi Gorge--Mpls & St Paul)                     | 9.0                |
|   | Oct 30 | Team Ortho Monster Dash & Half Marathon (split Chain of Lakes, Minnehaha Pkwy)   | 4.0                |
| <b>Minnehaha RP</b>                                       |        | <b>TOTAL</b>   | <b>16.8</b>        |
|   | Apr 24 | Get In Gear 10K & 2K Run/Walk (split--Minnehaha RP & Mississippi Gorge RP--Mpls & St. Paul)  | 2.7                |
|   | May 2  | Walk MS (split--Minnehaha RP & Mississippi Gorge RP--Mpls & St. Paul)  | 1.3                |
|   | May 16 | AIDS Walk (split--Minnehaha RP & Mississippi Gorge RP--Mpls & St. Paul)  | 1.7                |
|   | Jun 5  | Tour de Cure (split Chain of Lakes, Minnehaha Pkwy, Minnehaha RP)  | 0.3                |
|   | Jun 13 | Outdoor Church Service - Falls Bandstand   | 0.3                |
|   | Jun 20 | Outdoor Church Service Falls Bandstand   | 0.3                |
|   | Jun 27 | Svenskarnas  | 1.5                |
|   | Jul 4  | Outdoor Church Service Falls Bandstand   | 0.3                |
|   | Jul 10 | Outdoor Church Service Falls Bandstand   | 0.3                |
|   | Jul 12 | Norway Days  | 0.8                |
|   | Jul 18 | Outdoor Church Service Falls Bandstand   | 0.3                |
|   | Jul 18 | Red Ribbon Ride  | 0.3                |
|   | Jul 25 | Outdoor Church Service Falls Bandstand   | 0.3                |
|   | Aug 1  | Outdoor Church Service Falls Bandstand   | 0.3                |
|   | Aug 8  | Outdoor Church Service Falls Bandstand   | 0.3                |
|   | Aug 22 | Outdoor Church Service Falls Bandstand   | 0.3                |
|   | Aug 29 | Outdoor Church Service Falls Bandstand   | 0.3                |
|   | Aug 12 | Stroll for Epilepsy- Minnehaha RP  | 1.3                |
|   | Aug 14 | Wedding  | 0.4                |
|   | Aug 14 | Wedding Reception  | 0.5                |
|   | Aug 21 | Picnic   | 1.0                |
|   | Sep 19 | Minneapolis Tour (split Chain of Lakes, Minnehaha RT, Minnehaha RP, Mississippi Gorge RP, Nokomis- Hiawatha, Theodore Wirth, Wirth Memorial) | 0.4                |
|   | Sep 25 | NAMI Walk (Split Minnehaha RP, Mississippi Gorge RP)   | 0.8                |
|   | Sep 26 | Women Run the Cities (Split Minnehaha RP, Mississippi Gorge RP--Mpls & St. Paul)   | 0.7                |
|   | Oct 2  | Marathon for Non Public Ed (split Minnehaha RP; Mississippi Gorge RP--Mpls & St Paul)  | 0.2                |

## Table 2: Special event counts for 2010

(Note: these events occurred at times that were specifically not sampled to avoid double-counting)

| Agency/Park   | Date        | Event  | Visits<br>(1,000s) |
|---|-------------|--|--------------------|
| <b>MINNEAPOLIS PARK &amp; RECREATION BOARD: continued</b> |             |  |                    |
| <b>Mississippi Gorge RP</b>                               |             |  | <b>TOTAL</b>       |
|   | Jan 1       | Polar Dash   | 73.0               |
|   | Mar 20      | Get Lucky & Run Race (split Central Mississippi RP, Mississippi Gorge RP)  | 0.7                |
|   | Apr 25      | March of Dimes March for Babies (split Central Mississippi RP, Mississippi Gorge RP)   | 1.3                |
|   | Apr 24      | Get In Gear 10K & 2K Run/Walk (split--Minnehaha RP & Mississippi Gorge RP--Mpls & St. Paul)  | 3.5                |
|   | May 2       | Walk MS (split--Minnehaha RP & Mississippi Gorge RP--Mpls & St. Paul)  | 2.7                |
|   | May 16      | AIDS Walk (split--Minnehaha RP & Mississippi Gorge RP--Mpls & St. Paul)  | 1.3                |
|   | Jun 6       | Minneapolis Marathon (split Central Mississippi RP, Mississippi Gorge RP, Minnehaha Pkwy RT )  | 1.7                |
|   | Jun 12      | Dog Day 5K (split Central Mississippi RP, Mississippi Gorge RP)  | 2.0                |
|   | Jun 26      | Pacemaker 5000 (split Central Mississippi RP, Mississippi Gorge RP)  | 0.2                |
|   | Jul 4       | Mpls Red, White & Boom (split Central Mississippi RP, Mississippi Gorge RP)  | 0.4                |
|   | Jul 4       | Red White & Boom 1/2 Marathon (split Central Mississippi RP, Mississippi Gorge RP)   | 15.0               |
|   | Jul 10      | Triathlon (split Chain of Lakes RP, Minnehaha Pkwy, Nokomis-Hiawatha RP, Mississippi Gorge RP--Mpls & St Paul)                               | 7.5                |
|   | Jul 21      | Torchlight Run (split Central Mississippi RP, Mississippi Gorge RP)  | 0.5                |
|   | Jul 21 - 24 | Wakesurfing Championships  | 4.5                |
|   | Jul 24      | Carifest 2010  | 1.0                |
|   | Jul 24      | Mississippi River Challenge  | 1.5                |
|   | Aug 20      |  | 0.5                |
|   | Aug 21      | TC Breast Cancer 3-day (split Chain of Lakes, Mississippi Gorge-Mpls & St. Paul)   | 1.1                |
|   | Aug 22      | Night Owl Classic (split Central Mississippi RP, Mississippi Gorge RP--Mpls & St Paul)   | 0.2                |
|   | Aug 29      | 13.1 Minneapolis Run (split Central Mississippi RP, Mississippi Gorge RP, Minnehaha Pkwy)  | 1.2                |
|   | Sep 11      | Downtown Dualthon - (split Central Mississippi RP, Mississippi Gorge RP)   | 1.5                |
|   | Sep 18      | James Page 5K (split Central Mississippi RP, Mississippi Gorge RP)   | 0.8                |
|   | Sep 19      | Special Olympics 5K (split Central Mississippi RP, Mississippi Gorge RP)   | 0.5                |
|   | Sep 25      | Minneapolis Tour (split Chain of Lakes, Minnehaha RT, Minnehaha RP, Mississippi Gorge RP, Nokomis- Hiawatha, Theodore Wirth, Wirth Memorial) | 0.4                |
|   | Sep 26      | NAMI Walk (Split Minnehaha RP, Mississippi Gorge RP)   | 0.8                |
|   | Sep 26      | Women Run the Cities (Split Minnehaha RP, Mississippi Gorge RP--Mpls & St. Paul)   | 0.7                |
|   | Sep 26      | MS Challenge (split Central Mississippi RP, Mississippi Gorge RP--Mpls & St Paul)  | 0.2                |
|   | Oct 2       | Marathon for Non Public Ed (split Minnehaha RP; Mississippi Gorge RP--Mpls & St Paul)  | 0.2                |
|   | Oct 3       | Twin Cities Marathon & TC 10 (split Chain of Lakes, Nokomis-Hiawatha, Minnehaha Pkwy, Mississippi Gorge--Mpls & St Paul)                     | 9.0                |
|   | Oct 9       | Historic Riverfront 5K Run Walk (split Central Mississippi RP, Mississippi Gorge RP)   | 0.3                |
|   | Nov 25      | Turkey Day 5K  | 12.0               |
| <b>Northeast Diagonal RT</b>                              |             |  | <b>None</b>        |
| <b>Nokomis-Hiawatha RP</b>                                |             |  | <b>TOTAL</b>       |
|   | Jan 21 - 24 | Pond Hockey  | 40.9               |
|   | Apr 10      | MN Freeze 5K   | 20.0               |
|   | Apr 18      | Live Earth Run for Water   | 0.4                |
|   | May 15      | Adopt Walk   | 0.3                |
|   | May 23      | Crohn's & Colitis Walk   | 0.3                |
|   | May 31      | Brian Craft 5K / Nokomis   | 1.0                |
|   | Jun 5 - 6   | 24hour FANS Run  | 0.6                |
|   | Jun 5       | Lymphoma Walk  | 0.3                |
|   | Jun 20      | Viking Gridiron Gallup   | 0.5                |
|   | Jul 17      | MiracleKids Triathlon  | 0.4                |
|   | Jul 10      | Triathlon (split Chain of Lakes RP, Minnehaha Pkwy, Nokomis-Hiawatha RP, Mississippi Gorge RP--Mpls & St Paul)                               | 1.8                |
|   | Jul 24      | 5K/10K - Boston Scientific Heart of Summer   | 0.5                |
|   | Aug 15      | YWCA Women's Triathlon   | 1.5                |
|   | Sep 19      | Minneapolis Tour (split Chain of Lakes, Minnehaha RT, Minnehaha RP, Mississippi Gorge RP, Nokomis- Hiawatha, Theodore Wirth, Wirth Memorial) | 2.0                |
|   | Sep 18      | Bolder Options Bolder Dash   | 0.4                |
|   | Oct 3       | Twin Cities Marathon & TC 10 (split Chain of Lakes, Nokomis-Hiawatha, Minnehaha Pkwy, Mississippi Gorge--Mpls & St Paul)                     | 0.4                |
|   | Oct 9       | Making Strides Against Breast Cancer Walk  | 9.0                |
| <b>North Mississippi RP</b>                               |             |  | <b>TOTAL</b>       |
|   | Jun 12      | Accessibility, Inc. - Rollin Along the River   | 1.5                |
|   | Sep 12      | Picnic   | 0.5                |
|   |             |  | 1.0                |

## Table 2: Special event counts for 2010

(Note: these events occurred at times that were specifically not sampled to avoid double-counting)

| Agency/Park   | Date | Event  | Visits<br>(1,000s) |
|---|------|--|--------------------|
| <b>MINNEAPOLIS PARK &amp; RECREATION BOARD: continued</b> |      |  |                    |
| Ridgeway Parkway RT                                       |      | None   | -                  |
| St. Anthony Parkway RT                                    |      | None   | -                  |
| <b>Theodore Wirth RP</b>                                  |      | <b>TOTAL</b>   | <b>4.0</b>         |
| Feb 6 - 7   |      | Loppet (split Chain of Lakes and Theodore Wirth RP, Wirth Memorial Pkwy)   | 0.4                |
| May 1   |      | Walk for Animals (Split between Theodore Wirth Park and Wirth Parkway)   | 1.5                |
| Jun 26  |      | Tri-Loppet (split Chain of Lakes RP, Theodore Wirth RP)  | 0.2                |
| Jul 31  |      | 5K Your Way  | 1.2                |
| Sep 19  |      | Minneapolis Tour (split Chain of Lakes, Minnehaha RT, Minnehaha RP, Mississippi Gorge RP, Nokomis- Hiawatha, Theodore Wirth, Wirth Memorial) | 0.4                |
| Sep 18  |      | Trail Loppet   | 0.3                |
| <b>Victory Memorial (Wirth) Parkway RT</b>                |      | <b>TOTAL</b>   | <b>2.2</b>         |
| Feb 6 - 7   |      | Loppet (split Chain of Lakes and Theodore Wirth RP, Wirth Memorial Pkwy)   | 0.3                |
| May 1   |      | Walk for Animals (Split between Theodore Wirth Park and Wirth Parkway)   | 1.5                |
| Sep 19  |      | Minneapolis Tour (split Chain of Lakes, Minnehaha RT, Minnehaha RP, Mississippi Gorge RP, Nokomis- Hiawatha, Theodore Wirth, Wirth Memorial) | 0.4                |
| <b>RAMSEY COUNTY:</b>                                     |      |  |                    |
| <b>Bald Eagle-Otter Lakes RP</b>                          |      | <b>TOTAL</b>   | <b>39.7</b>        |
| May 22  |      | Northern Lakes Run   | 0.5                |
| Jun 13  |      | National MS Society Charity Bike Ride  | 3.5                |
| Aug 21  |      | Fishing for Life Shore line fishing contest  | 0.3                |
| Sep 11  |      | Final Stretch Race Event   | 0.3                |
| Oct 2   |      | Muskie Inc   | 0.3                |
| All Year  |      | Tamarack Nature - Formal program attendee (including nature pre-school, ECFE and volunteers)   | 34.8               |
| <b>Battle Creek RP</b>                                    |      | <b>TOTAL</b>   | <b>10.7</b>        |
| Feb 3   |      | MSHSL Section Meet   | 0.3                |
| Feb 4   |      | MSHSL Section Meet   | 0.3                |
| May 22  |      | Krisine Cooley Wedding Reception   | 0.3                |
| May 29  |      | Eritrean Community Ctr   | 0.4                |
| Jun 5   |      | Kong Moua  | 0.3                |
| Jun 19  |      | Donatelle Plastic's Company Picnic   | 0.5                |
| Jun 20  |      | Thai Vang  | 0.4                |
| Jun 26  |      | Houa Lee   | 0.3                |
| Jul 10  |      | Living World Church  | 0.5                |
| Jul 13  |      | St Paul Fire Fighters  | 0.4                |
| Jul 24  |      | Bao Xiong  | 0.5                |
| Jul 27  |      | Xcel Energy  | 0.3                |
| Aug 15  |      | Amalgamated Transit Union  | 0.5                |
| Aug 16  |      | UAW Ford Retirees  | 0.4                |
| Aug 22  |      | Breast Cancer 3-Day (split Battle Creek RP, Indian Mounds RP)  | 1.6                |
| Aug 21  |      | Anderson Race Management   | 0.3                |
| Aug 21  |      | St Paul Plumbers   | 0.5                |
| Aug 22  |      | Wal Mart Woodbury  | 0.5                |
| Aug 28  |      | Polencheck Joe Wedding   | 0.3                |
| Aug 29  |      | Pipefitters Local 455  | 0.5                |
| Sep 1 & 2   |      | Tri Metro Conference Track Meet  | 0.3                |
| Sep 14  |      | Health East Clinics  | 0.5                |
| Oct 25  |      | Math and Science Academy Track meet  | 0.4                |
| Oct 28  |      | Minnehaha Academy TC Conf Champion race  | 0.4                |
| <b>Birch Lake RT</b>                                      |      | <b>TOTAL</b>   | <b>3.5</b>         |
| Jun 13  |      | National MS Society Charity Bike Ride  | 3.5                |
| <b>Bruce Vento RT</b>                                     |      | <b>TOTAL</b>   | <b>0.6</b>         |
| Aug 21  |      | Breast Cancer 3-Day (split Bruce Vento RT, Grass-Vadnais-Snail Lake RP, Highway 96 RT, Keller RP, Trout Brook RT)                            | 0.6                |
| <b>Grass-Vadnais-Snail Lake RP</b>                        |      | <b>TOTAL</b>   | <b>4.2</b>         |
| Apr 24  |      | Paws for People Walk   | 0.7                |
| May 29  |      | Twin Cities Bike Club  | 0.5                |
| June 14 - 18  |      | U of M   | 0.5                |
| Jul 3   |      | Twin Cities Bike Club  | 0.5                |
| Jul 4   |      | Twin Cities Bike Club  | 0.5                |
| Aug 21  |      | Breast Cancer 3-Day (split Bruce Vento RT, Grass-Vadnais-Snail Lake RP, Highway 96 RT, Keller RP, Trout Brook RT)                            | 0.6                |
| Sep 11  |      | Corval Group   | 0.3                |
| Sep 18  |      | RAGOM  | 0.3                |
| Sep 25  |      | Union Gospel   | 0.3                |

## Table 2: Special event counts for 2010

(Note: these events occurred at times that were specifically not sampled to avoid double-counting)

| Agency/Park                     | Date     | Event  | Visits<br>(1,000s) |
|---------------------------------|----------|--|--------------------|
| <b>RAMSEY COUNTY: continued</b> |          |  |                    |
| <b>Highway 96 RT</b>            |          | <b>TOTAL</b>   | <b>3.4</b>         |
|                                 | Apr 24   | Paws for People Walk   | 0.7                |
|                                 | May 29   | Twin Cities Bike Club  | 0.5                |
|                                 | July 3rd | Twin Cities Bike Club  | 0.5                |
|                                 | Jul 4    | Twin Cities Bike Club  | 0.5                |
|                                 | Aug 21   | Breast Cancer 3-Day (split Bruce Vento RT, Grass-Vadnais-Snail Lake RP,<br>Highway 96 RT, Keller RP, Trout Brook RT) | 0.6                |
|                                 | Sep 18   | RAGOM  | 0.3                |
|                                 | Sep 25   | Union Gospel   | 0.3                |
| <b>Keller RP</b>                |          |  | <b>1.4</b>         |
|                                 | Apr 18   | John Glenn Middle School   | 0.8                |
|                                 | Aug 21   | Breast Cancer 3-Day (split Bruce Vento RT, Grass-Vadnais-Snail Lake RP,<br>Highway 96 RT, Keller RP, Trout Brook RT) | 0.6                |
| <b>Long Lake RP</b>             |          | <b>TOTAL</b>   | <b>31.0</b>        |
|                                 | Feb 6    | Snowshoe Race  | 0.3                |
|                                 | Feb 7    | New Brighton Sportsmen Ice Fishing Contest   | 0.5                |
|                                 | May 23   | church group - Stephen Endrizzi  | 0.4                |
|                                 | May 28   | Irondale Sr Class Picnic   | 0.5                |
|                                 | May 29   | Al-Amal School   | 0.3                |
|                                 | May 30   | Sing Vang  | 0.4                |
|                                 | Jun 2    | Bethlehem Baptist Church   | 0.3                |
|                                 | Jun 5    | Vacation Sports - NB Triathlon   | 0.3                |
|                                 | Jun 7    | Mpls Postal Workers Union  | 0.5                |
|                                 | Jun 10   | Hmong College prep   | 0.5                |
|                                 | Jun 12   | Childrens Cancer Res Fund  | 0.5                |
|                                 | Jun 13   | Moua Vu Family   | 0.4                |
|                                 | Jun 16   | Bethlehem Baptist Church   | 0.3                |
|                                 | Jun 17   | Boston Scientific  | 0.4                |
|                                 | Jun 18   | Asplundh Tree Experts  | 0.5                |
|                                 | Jun 19   | Xai Vang   | 0.4                |
|                                 | Jul 23   | Bethlehem Baptist Church   | 0.3                |
|                                 | Jun 26   | Zer Vang   | 0.4                |
|                                 | Jun 27   | Jane Fust Debruzzi   | 0.4                |
|                                 | Jun 30   | Bethlehem Baptist Church   | 0.3                |
|                                 | Jul 4    | Shaik Ghouse   | 0.3                |
|                                 | Jul 6    | Tibetan Am Foundation  | 0.5                |
|                                 | Jul 7    | Bethlehem Baptist Church   | 0.3                |
|                                 | Jul 10   | Lee Hue  | 0.5                |
|                                 | Jul 14   | Bethlehem Baptist Church   | 0.3                |
|                                 | Jul 17   | TC Carpet - Local 596  | 0.3                |
|                                 | Jul 18   | Doua Yang  | 0.4                |
|                                 | Jul 21   | Bethlehem Baptist Church   | 0.3                |
|                                 | Jul 22   | General Mills  | 0.5                |
|                                 | Jul 24   | David Chang  | 0.5                |
|                                 | Jul 25   | R & D Systems  | 0.5                |
|                                 | Jul 28   | Bethlehem Baptist Church   | 0.3                |
|                                 | Jul 29   | Boston Scientific  | 0.7                |
|                                 | Aug 4    | Bethlehem Baptist Church   | 0.3                |
|                                 | Aug 7    | Lis Sib Sau family picnic  | 0.5                |
|                                 | Aug 8    | Judith Westlee   | 0.3                |
|                                 | Aug 11   | Bethlehem Baptist Church   | 0.3                |
|                                 | Aug 12   | New Brighton Stockyard Days  | 1.0                |
|                                 | Aug 13   | New Brighton Stockyard Days  | 1.0                |
|                                 | Aug 14   | New Brighton Stockyard Days  | 5.0                |
|                                 | Aug 15   | New Brighton Stockyard Days  | 5.0                |
|                                 | Aug 21   | Tria Chang   | 0.3                |
|                                 | Aug 25   | Bethlehem Baptist Church   | 0.3                |
|                                 | Aug 27   | Boston Scientific  | 0.5                |
|                                 | Aug 28   | Shawn Silvera Memorial Run   | 0.4                |
|                                 | Aug 29   | GCC Local 1-M  | 0.3                |
|                                 | Sep 1    | Bethlehem Baptist Church   | 0.3                |
|                                 | Sep 9    | Boston Scientific  | 0.7                |
|                                 | Sep 11   | Northern Lights Greyhound Adoption Foundation  | 0.5                |
|                                 | Sep 17   | MSRA, Blaine Gartner   | 0.5                |
|                                 | Sep 18   | Kim Byong Moon   | 0.5                |
| <b>Rice Creek North RT</b>      |          | <b>None</b>  | <b>-</b>           |
| <b>Rice Creek West RT</b>       |          |  | <b>1.0</b>         |
|                                 | Feb 6    | Snowshoe Race  | 0.3                |
|                                 | Jun 5    | Vacation Sports - NB Triathlon   | 0.3                |
|                                 | Aug 28   | Shawn Silvera Memorial Run   | 0.4                |

## Table 2: Special event counts for 2010

(Note: these events occurred at times that were specifically not sampled to avoid double-counting)

| Agency/Park                                | Date | Event   | Visits<br>(1,000s) |
|--|------|---|--------------------|
| <b>RAMSEY COUNTY: continued</b>            |      |   |                    |
| <b>Tony Schmidt RP</b>                     |      | <b>TOTAL</b>  | <b>3.0</b>         |
| Sep 18                                     |      | Arden Hills Comm Celebration  | 3.0                |
| <b>Trout Brook RT</b>                      |      |   | <b>0.6</b>         |
| Aug 21                                     |      | Breast Cancer 3-Day (split Bruce Vento RT, Grass-Vadnais-Snail Lake RP, Highway 96 RT, Keller RP, Trout Brook RT)         | 0.6                |
| <b>CITY OF ST. PAUL:</b>                   |      |   |                    |
| <b>Bruce Vento RT</b>                      |      | <b>TOTAL</b>  | <b>11.4</b>        |
| Jan 26 - 28                                |      | Winter Carnival Treasure Hunt (5,000 on 1/28 and 2,500 on 1/26 and 1/27)  | 10.0               |
| Apr 14                                     |      | Spring Parks Cleanup total of 400 divided by 1/9 = (listed only here for all sites)                                       | 0.4                |
| Sep 12                                     |      | St. Paul Classic Bike Tour (1/7 each: Hidden Falls, Indian Mounds, Como; Phalen; Miss Gorge -SP, Sam Morgan RT, Vento RT) | 1.0                |
| <b>Cherokee Heights RP</b>                 |      | <b>TOTAL</b>  | <b>3.9</b>         |
| May 30                                     |      | KMOJ Radio  | 0.7                |
| Jul 2-5                                    |      | Taste of MN - Fireworks (500 on 2,3 and 5 and 1,000 on 4th)   | 2.5                |
| Jul 4                                      |      | Parks and Recreation 4th of July Event  | 0.7                |
| <b>Como RP, Zoo &amp; Conservatory SRF</b> |      | <b>TOTAL</b>  | <b>430.3</b>       |
| All Year                                   |      | Como Education events/classes   | 20.4               |
| All Year                                   |      | Music in the Parks Concert Audiences (larger shows listed below)  | 6.8                |
| Winter                                     |      | Como Downhill Ski (Enterprise facility) (cc ski meets and lessons)  | 1.3                |
| Jan-Feb                                    |      | Winter Carnival Events  | 22.9               |
| Jan 17-19                                  |      | Rainforest Revel  | 5.1                |
| Jan 24                                     |      | Winter Carnival Orchid Show   | 1.9                |
| Jan 25                                     |      | Winter Carnival Orchid Show   | 2.5                |
| Jan 30-31                                  |      | Winter Flower Show  | 1.0                |
| Feb 13-16                                  |      | Woo at the Zoo  | 22.0               |
| Feb 28                                     |      | MN Parent Camp Fair   | 4.8                |
| Mar 6-7                                    |      | Daniel Cox Photo Exhibit Opening  | 7.3                |
| Mar 7                                      |      | Medicine for Sick Children Foundation   | 3.0                |
| Mar 21-22                                  |      | Spring Fling  | 4.0                |
| Mar 21-22                                  |      | Spring Flower Show Opening  | 12.5               |
| Apr 22-26                                  |      | Party for the Planet  | 20.7               |
| May 2-3                                    |      | Summer Flower Show Opening  | 14.6               |
| May 9-10                                   |      | Bonsai Show (over two days)   | 16.1               |
| May 12                                     |      | St. Paul Police Patrol Picnic   | 1.7                |
| May 16                                     |      | New Life Family Services Walk/Run   | 0.4                |
| May 16                                     |      | Twin Cities Marathon Kid's Marathon   | 1.5                |
| May 16                                     |      | Vintage Foreign Marque Clubs  | 3.0                |
| May 16-17                                  |      | Plant Conservation Day  | 13.2               |
| May 17                                     |      | Walmart - Kaspszak  | 0.5                |
| May 23                                     |      | Gingerbread Craft Show  | 1.0                |
| May 24                                     |      | Gingerbread Craft Show  | 1.3                |
| May 25                                     |      | Gingerbread Craft Show  | 1.2                |
| May 31                                     |      | Roseville Community Band  | 0.8                |
| Jun 1                                      |      | Prairie Seeds Academy   | 0.5                |
| Jun 2                                      |      | Applebee's - Myers  | 0.4                |
| Jun 3                                      |      | South High School   | 0.4                |
| Jun 6                                      |      | Como Pops   | 0.3                |
| Jun 7                                      |      | American Lung Assoc of MN   | 0.5                |
| Jun 7                                      |      | Q.M.C. Pride Concert  | 0.8                |
| Jun 8                                      |      | Noble Academy   | 0.4                |
| Jun 10                                     |      | Community School of Excellence  | 0.3                |
| Jun 11                                     |      | Dakota Communities Inc picnic   | 0.6                |
| Jun 12                                     |      | Corey Anderson Family Reunion   | 0.3                |
| Jun 13                                     |      | Urban Partnership and Community Development Walk/Run  | 0.5                |
| Jun 13                                     |      | Calhoun Isles Community Band  | 0.3                |
| Jun 16                                     |      | Medalist Concert Band   | 0.3                |
| Jun 18                                     |      | MELSA Summer Reading  | 5.8                |
| Jun 20                                     |      | St. Louis Park Community Band   | 0.3                |
| Jun 20-21                                  |      | Blooming Butterflies Opening  | 28.1               |
| Jun 21                                     |      | Twin Cities Pride - Tretter   | 0.5                |
| Jun 23                                     |      | Como Community Night  | 6.0                |
| Jun 24                                     |      | Northland Insurance Company Picnic  | 0.4                |
| Jun 27                                     |      | St. Anthony Civic Orchestra   | 0.3                |
| Jun 28                                     |      | Brio Brass  | 0.3                |
| Jun 30                                     |      | Whistlepigs String Band   | 0.4                |
| Jul 3                                      |      | Hmong Freedom Celebration - Lao Family of MN setup  | 2.0                |

## Table 2: Special event counts for 2010

(Note: these events occurred at times that were specifically not sampled to avoid double-counting)

| Agency/Park  | Date             | Event   | Visits<br>(1,000s) |
|--|------------------|---|--------------------|
| <b>CITY OF ST. PAUL: continued</b>                   |                  |   |                    |
| <b>Como RP, Zoo &amp; Conservatory SRF continued</b> |                  |   |                    |
|  | Jul 4            | Pops Ensemble Concert   | 0.3                |
|  | Jul 4            | Hmong Freedom Celebration - Lao Family of MN event  | 42.0               |
|  | Jul 5            | Minnesota Sinfonia Concert  | 0.5                |
|  | Jul 5            | Hmong Freedom Celebration - Lao Family of MN event  | 45.0               |
|  | Jul 6            | The Bavarian Musikmeisters  | 0.6                |
|  | Jul 8            | RESOURCE, Inc.  | 0.3                |
|  | Jul 8            | Rosetown Playhouse  | 0.9                |
|  | Jul 9            | Rosetown Playhouse  | 0.9                |
|  | Jul 10           | Rosetown Playhouse  | 0.9                |
|  | Jul 11           | Beasley's Big Band  | 0.3                |
|  | Jul 11           | Pops Ensemble Concert   | 0.3                |
|  | Jul 13           | Twin Cities Youth Symphonies  | 0.6                |
|  | Jul 16           | South Metro Human Services  | 0.3                |
|  | Jul 17           | Preferred One   | 0.3                |
|  | Jul 15           | Rosetown Playhouse  | 0.9                |
|  | Jul 16           | Rosetown Playhouse  | 0.9                |
|  | Jul 17           | Rosetown Playhouse  | 0.9                |
|  | Jul 20           | Rein in Sarcoma   | 0.6                |
|  | Jul 21           | South Washington County Community Band  | 0.3                |
|  | Jul 22           | Thomson Reuters - Kenealy   | 0.3                |
|  | Jul 23           | Sunset Affair   | 0.5                |
|  | Jul 22           | Hillcrest Community Theater   | 0.5                |
|  | Jul 23           | Hillcrest Community Theater   | 0.4                |
|  | Jul 24           | Hillcrest Community Theater   | 0.4                |
|  | Jul 24           | Crossroads Elementary Picnic  | 0.3                |
|  | Jul 29           | Hillcrest Community Theater   | 0.4                |
|  | Jul 30           | Hillcrest Community Theater   | 0.4                |
|  | Jul 31           | Hillcrest Community Theater   | 0.4                |
|  | Aug 1            | Lex-Ham Community Band  | 0.3                |
|  | Aug 4            | Minnesota State Band  | 0.3                |
|  | Aug 8            | John Phillips Sousa Memorial Band   | 0.7                |
|  | Aug 8            | Twin Cities Show Chorus   | 0.3                |
|  | Aug 11           | City of Saint Paul Employee Picnic  | 0.8                |
|  | Aug 11           | Minnesota State Band  | 0.3                |
|  | Aug 16           | Japanese Lantern Lighting Festival  | 5.8                |
|  | Aug 17           | Northstar Barbershop Chorus   | 0.3                |
|  | Aug 18           | Minnesota State Band  | 0.3                |
|  | Aug 22           | Kaposia   | 0.4                |
|  | Aug 22           | Kenwood Symphony Orchestra  | 0.3                |
|  | Aug 23           | Como Park Lutheran Church   | 0.3                |
|  | Aug 26           | Cretin-Derham Hall Picnic   | 0.3                |
|  | Aug 29           | Pops Ensemble Concert Benefit Concert   | 0.3                |
|  | Aug 30           | Johnny Owen Band  | 0.3                |
|  | Sep 12           | St. Paul Classic Bike Tour (1/7 each: Hidden Falls, Indian Mounds, Como; Phalen; Miss Gorge -SP, Sam Morgan RT, Vento RT) | 1.0                |
|  | Sep 12-13        | African Predator Conservation   | 9.5                |
|  | Sep 19           | Free to be Green  | 11.5               |
|  | Sep 20           | Down Syndrome Association   | 5.5                |
|  | Sep 26           | Brain Injury Association Walk   | 1.0                |
|  | Sep 27           | AFSP Walk/Run   | 0.4                |
|  | Oct 3            | Camp Odayin   | 0.5                |
|  | Oct 4            | American Foundation For Suicide Walk/Run  | 0.4                |
|  | Oct 4            | Boy Scouts  | 0.3                |
|  | Oct 4            | Loaves And Fishes   | 0.6                |
|  | Oct 10           | MN Parent Education Resource Fair   | 2.1                |
|  | Oct 10-11        | Wolf Awareness  | 4.4                |
|  | Oct 18           | The Center For Grief, Loss and Transition Walk/Run  | 0.3                |
|  | Oct 17-18, 23-25 | Zoo Boo (5 days)  | 16.0               |
|  | Oct 24           | Concordia University Walk/Run   | 0.3                |
|  | Nov 8            | Wedding Showcase Open House   | 0.3                |
|  | Nov 5-15         | Ikebana Show  | 10.9               |
|  | Nov 14-15        | Orangutan Awareness   | 2.9                |
|  | Nov 22           | The Sporting Life Walk/Run  | 0.5                |
|  | Nov 26           | Charities Challenge   | 0.7                |
|  | Dec 3            | Bouquets Wine Tasting   | 0.4                |
|  | Dec 3-4          | Winter Flower Show Opening  | 2.1                |
|  | Dec 4-5          | Craft Show  | 0.5                |
|  | Dec 3-31         | Last Polaroid Show Photo  | 4.8                |
|  | Dec 31           | Family New Year's Day   | 1.5                |

## Table 2: Special event counts for 2010

(Note: these events occurred at times that were specifically not sampled to avoid double-counting)

| Agency/Park                        | Date             | Event   | Visits<br>(1,000s) |
|------------------------------------|------------------|---|--------------------|
| <b>CITY OF ST. PAUL: continued</b> |                  |   |                    |
| <b>Hidden Falls-Crosby Farm RP</b> |                  |   | <b>9.8</b>         |
|                                    | May 30           | TOTAL   | 0.3                |
|                                    | Jun 12           | Grodahl wedding   | 0.5                |
|                                    | Aug 22           | Bio-blitz   | 3.0                |
|                                    | Sep 12           | Anderson Race Management Walk/Run   | 1.0                |
|                                    | Oct 23-24, 29-31 | St. Paul Classic Bike Tour (1/7 each: Hidden Falls, Indian Mounds, Como; Phalen; Miss Gorge -SP, Sam Morgan RT, Vento RT)         | 5.0                |
|                                    |                  | BareBones Performance (5 days)  |                    |
| <b>Indian Mounds RP</b>            |                  |   | <b>7.4</b>         |
|                                    | May 16           | TOTAL   | 0.6                |
|                                    | Jul 2-5          | Tree climbing championship  | 3.8                |
|                                    | Aug 22           | Taste of MN - Fireworks (2,500 on 7/4 and 750 on 7/2, 3 and 5)  | 1.6                |
|                                    | Sep 12           | Breast Cancer 3-Day (split Battle Creek RP, Indian Mounds RP)   | 1.0                |
|                                    | Sep 25           | St. Paul Classic Bike Tour (7,000 = 1/7 each: Hidden Falls, Indian Mounds, Como; Phalen; Miss Gorge -SP, Sam Morgan RT, Vento RT) | 0.4                |
|                                    |                  | The Ain Dah Yung Center Picnic  |                    |
| <b>Lilydale-Harriet Island RP</b>  |                  |   | <b>319.3</b>       |
|                                    | All year         | Padelford Park Excursions   | 82.0               |
|                                    | All year         | Harriet Island Private Events   | 9.7                |
|                                    | Feb 23           | Maddox Memorial   | 0.5                |
|                                    | Apr 1 - Oct 31   | Fossil Hunting Groups   | 8.1                |
|                                    | Apr 25           | Wishes for the Sky  | 0.5                |
|                                    | May 1            | Wedding   | 0.3                |
|                                    | May 8            | Wedding   | 0.4                |
|                                    | May 20           | Lifetrack Resources   | 0.3                |
|                                    | May 21           | High School Dance   | 0.3                |
|                                    | May 23           | Friends of the Mississippi River  | 0.3                |
|                                    | May 29           | KMOJ  | 0.7                |
|                                    | Jun 5            | ADA Bike Ride   | 0.4                |
|                                    | Jun 11           | Wedding   | 0.3                |
|                                    | Jun 12           | Wedding   | 0.3                |
|                                    | Jun 12           | MADD Walk   | 0.8                |
|                                    | Jun 19           | Wedding   | 0.3                |
|                                    | Jun 26           | Time to Fly Charity Run   | 3.0                |
|                                    | Jun 26           | Church Event  | 1.0                |
|                                    | Jul 2-5          | Taste of Minnesota  | 25.0               |
|                                    | Jul 3            | Charities Challenge Walk  | 0.3                |
|                                    | Jul 16           | Wedding   | 0.3                |
|                                    | Jul 24           | Red Bull  | 95.0               |
|                                    | Jul 25           | Friends of the Mississippi River  | 0.5                |
|                                    | Jul 27           | Wildside Caterers   | 0.3                |
|                                    | Aug 5            | People's Inc  | 0.3                |
|                                    | Aug 6            | Wedding   | 0.3                |
|                                    | Aug 11           | Builders Club Event   | 3.0                |
|                                    | Aug 13-15        | Irish Fair  | 75.0               |
|                                    | Aug 17           | Great River Event   | 0.3                |
|                                    | Aug 20           | Vega Productions  | 1.0                |
|                                    | Aug 21           | Wedding   | 0.3                |
|                                    | Aug 28           | MN Military Appreciation Fund   | 3.0                |
|                                    | Sep 4            | Wedding   | 0.4                |
|                                    | Sep 10           | Wedding   | 0.3                |
|                                    | Sep 16           | Wine Tasting  | 0.3                |
|                                    | Sep 18           | Wedding   | 0.3                |
|                                    | Oct 15           | Wedding   | 0.3                |
|                                    | Oct 16           | Wedding   | 0.3                |
|                                    | Oct 17           | MELSA Run   | 0.3                |
|                                    | Oct 22           | Wedding   | 0.3                |
|                                    | Oct 23           | Wedding   | 0.3                |
|                                    | Oct 23           | Halloween Hustle Run  | 0.5                |
|                                    | Oct 26           | Great River Event   | 0.3                |
|                                    | Oct 28           | Great River Event   | 0.3                |
|                                    | Nov 12           | Educator Training   | 0.3                |
|                                    | Nov 30 - Dec 20  | Actor's Theater - Christmas Carol   | 1.3                |

## Table 2: Special event counts for 2010

(Note: these events occurred at times that were specifically not sampled to avoid double-counting)

| Agency/Park                        | Date           | Event   | Visits<br>(1,000s) |
|------------------------------------|----------------|---|--------------------|
| <b>CITY OF ST. PAUL: continued</b> |                |   |                    |
| <b>Mississippi Gorge RP</b>        |                |   | <b>TOTAL</b>       |
|                                    |                |   | <b>18.6</b>        |
|                                    | Apr 25         | Get In Gear 10K & 2K Run/Walk (split--Minnehaha RP & Mississippi Gorge RP--Mpls & St. Paul)                                       | 2.7                |
|                                    | May 2          | Walk MS (split--Minnehaha RP & Mississippi Gorge RP--Mpls & St. Paul)   | 1.3                |
|                                    | May 17         | AIDS Walk (split--Minnehaha RP & Mississippi Gorge RP--Mpls & St. Paul)   | 1.7                |
|                                    | Jul 11         | Triathlon (split Chain of Lakes RP, Minnehaha Pkwy, Nokomis-Hiawatha RP, Mississippi Gorge RP--Mpls & St Paul)                    | 0.5                |
|                                    | Aug 20         | TC Breast Cancer 3-day (split Minneapolis Chain of Lakes, Mississippi Gorge RP--Mpls & St. Paul)                                  | 1.1                |
|                                    | Aug 21         | Night Owl Classic (split Central Mississippi RP, Mississippi Gorge RP--Mpls & St Paul)  | 0.2                |
|                                    | Sep 12         | St. Paul Classic Bike Tour (7,000 = 1/7 each: Hidden Falls, Indian Mounds, Como; Phalen; Miss Gorge -SP, Sam Morgan RT, Vento RT) | 1.0                |
|                                    | Sep 25         | MS Challenge (split Central Mississippi RP, Mississippi Gorge RP--Mpls & St Paul)   | 0.2                |
|                                    | Sep 26         | Women Run the Cities (Split Minnehaha RP, Mississippi Gorge RP--Mpls & St. Paul)  | 0.7                |
|                                    | Oct 3          | Marathon for Non Public Ed (split Minnehaha RP; Mississippi Gorge RP--Mpls & St Paul)   | 0.2                |
|                                    | Oct 6          | Twin Cities Marathon & TC 10 (split Chain of Lakes, Nokomis-Hiawatha, Minnehaha Pkwy, Mississippi Gorge--Mpls & St Paul)          | 9.0                |
| <b>Phalen RP</b>                   |                |   | <b>TOTAL</b>       |
|                                    |                |   | <b>81.1</b>        |
|                                    | Apr 18         | Final Stretch, Inc.   | 0.5                |
|                                    | Apr 26         | U of M Regatta Event - Lynn Waldorf   | 5.0                |
|                                    | Apr 26         | March of Dimes Walk   | 0.6                |
|                                    | May 2          | BDSRA Walk/Run  | 0.3                |
|                                    | May 17         | Solar Regatta   | 0.3                |
|                                    | May 22         | Ramsey-Washington Metro Watershed   | 1.0                |
|                                    | May 30         | Tuberous Sclerosis Walk/Run   | 0.5                |
|                                    | Jun 13         | Local #323 Picnic   | 0.5                |
|                                    | Jun 17         | Merrill Corporation   | 0.4                |
|                                    | Jun 20         | Anderson Race Walk/Run  | 0.3                |
|                                    | Jun 24         | Music in the Park Concert - MN Sinfonia   | 0.7                |
|                                    | Jun 27         | Ingram picnic   | 0.4                |
|                                    | Jul 10         | Dragon Festival   | 3.0                |
|                                    | Jul 11         | Dragon Festival   | 3.0                |
|                                    | Jul 25         | Paul Stoehr - Union Picnic  | 0.7                |
|                                    | Aug 1          | Carpenters Local 87 - Beedle  | 0.4                |
|                                    | Aug 8          | IBEW #110   | 0.3                |
|                                    | Aug 13         | Epilepsy Foundation of MN Walk  | 0.8                |
|                                    | Aug 15         | Millwright Local 548  | 0.3                |
|                                    | Aug 22         | Vacation Sports Triathlon   | 1.5                |
|                                    | Aug 22         | Wedding   | 0.3                |
|                                    | Sep 12         | St. Paul Classic Bike Tour (7,000 = 1/7 each: Hidden Falls, Indian Mounds, Como; Phalen; Miss Gorge -SP, Sam Morgan RT, Vento RT) | 1.0                |
|                                    | Sep 12         | Vibha Walk  | 0.3                |
|                                    | Sep 13         | India Assoc of MN Festival  | 2.0                |
|                                    | Sep 19         | Sharing Life/The Laura Newmann Foundation Walk  | 0.5                |
|                                    | Sep 25         | Ethiopian Festival  | 1.0                |
|                                    | Sep 26         | Hearing and Service Dogs of MN  | 0.3                |
|                                    | Sep 27         | MMRF  | 2.8                |
|                                    | Oct 3          | Leukemia & Lymphoma Society   | 2.5                |
|                                    | Nov 23 - Jan 1 | Holiday Lights in the Park  | 50.0               |
| <b>Samuel Morgan RT</b>            |                |   | <b>TOTAL</b>       |
|                                    |                |   | <b>1.0</b>         |
|                                    | Sep 12         | St. Paul Classic Bike Tour (7,000 = 1/7 each: Hidden Falls, Indian Mounds, Como; Phalen; Miss Gorge -SP, Sam Morgan RT, Vento RT) | 1.0                |
| <b>SCOTT COUNTY:</b>               |                |   |                    |
| <b>Cedar Lake Farm RP</b>          |                |   | <b>None</b>        |
|                                    |                |   | -                  |
| <b>Scott County RT</b>             |                |   | <b>None</b>        |
|                                    |                |   | -                  |

## Table 2: Special event counts for 2010

(Note: these events occurred at times that were specifically not sampled to avoid double-counting)

| Agency/Park                         | Date       | Event  | Visits<br>(1,000s) |
|-------------------------------------|------------|--|--------------------|
| <b>THREE RIVERS - SCOTT COUNTY:</b> |            |  |                    |
| <b>Cleary Lake RP</b>               |            | <b>TOTAL</b>   | <b>2.9</b>         |
|                                     | Winter     | Snowmobile trail use   | 1.9                |
|                                     | Jun 4      | ISD 721 New Prague-Rec Program   | 0.3                |
|                                     | Jun 11     | Scott Highlands Middle School-General Use  | 0.3                |
|                                     | Sch Yr     | School groups @ park   | 0.4                |
| <b>Murphy-Hanrehan PR</b>           |            | <b>TOTAL</b>   | <b>1.5</b>         |
|                                     | Winter     | Snowmobile trail use   | 1.2                |
|                                     | Year round | Formal program visits not counted in regular sample and not part of other special events | 0.3                |
| <b>THREE RIVERS PARK DISTRICT:</b>  |            |  |                    |
| <b>Baker PR</b>                     |            | <b>TOTAL</b>   | <b>16.0</b>        |
|                                     | Winter     | Snowmobile trail use   | 1.2                |
|                                     | Oct 23     | Baker Boo  | 0.4                |
|                                     | Year round | Formal program visits not counted in regular sample and not part of other special events | 4.7                |
|                                     | Sch Yr     | School groups @ Near-Wilderness Center   | 9.7                |
| <b>Bassett Creek RT</b>             |            | <b>None</b>  | -                  |
| <b>Bryant Lake RP</b>               |            | <b>TOTAL</b>   | <b>0.2</b>         |
|                                     | Year round | Formal program visits not counted in regular sample and not part of other special events | 0.2                |
| <b>Carver PR</b>                    |            | <b>TOTAL</b>   | <b>19.9</b>        |
|                                     | Winter     | Snowmobile trail use   | 1.8                |
|                                     | Apr 2      | Spring Eggstravaganza  | 0.5                |
|                                     | Apr 3      | Spring Eggstravaganza  | 0.4                |
|                                     | Year round | Formal program visits not counted in regular sample and not part of other special events | 5.6                |
|                                     | Sch Yr     | School groups @ nature center  | 11.6               |
| <b>Cedar Lake RT</b>                |            | <b>TOTAL</b>   | <b>0.4</b>         |
|                                     | Jun 5      | American Diabetes Ride   | 0.3                |
|                                     | Year round | Formal program visits not counted in regular sample and not part of other special events | 0.1                |
| <b>Clifton French RP</b>            |            | <b>TOTAL</b>   | <b>7.8</b>         |
|                                     | May 22     | MN Stroke Association-Race   | 0.3                |
|                                     | Year round | Formal program visits not counted in regular sample and not part of other special events | 3.2                |
|                                     | Sch Yr     | School groups @ visitor center   | 4.3                |
| <b>Coon Rapids Dam RP</b>           |            | <b>TOTAL</b>   | <b>5.5</b>         |
|                                     | Year round | Formal program visits not counted in regular sample and not part of other special events | 0.6                |
|                                     | Sch Yr     | School groups @ visitor center   | 4.9                |
| <b>Crow-Hassan PR</b>               |            | <b>TOTAL</b>   | <b>0.7</b>         |
|                                     | Winter     | Snowmobile trail use   | 0.6                |
|                                     | Year round | Formal program visits not counted in regular sample and not part of other special events | 0.1                |
| <b>Dakota Rail RT</b>               |            | <b>None</b>  | <b>2.0</b>         |
|                                     | Feb 27     | Celebrate Greater Mound  | 1.5                |
|                                     | Sep 2      | Westonka Public Schools  | 0.5                |
| <b>Eagle Lake RP</b>                |            | <b>None</b>  | -                  |
| <b>Elm Creek PR</b>                 |            | <b>TOTAL</b>   | <b>118.9</b>       |
|                                     | Winter     | Snowmobile trail use   | 1.7                |
|                                     | Winter     | Winter Recreation area (manufactured snow area)  | 93.8               |
|                                     | May 15     | Williams Syndrome-Race   | 0.3                |
|                                     | Jun 5      | Mathenge-Picnic  | 0.3                |
|                                     | Jul 17     | Gujarti Samaj of MN-Picnic   | 0.3                |
|                                     | Jul 18     | 850 Horizontal Eng-Picnic  | 0.3                |
|                                     | Aug 8      | Grace Fellowship-Picnic  | 0.3                |
|                                     | Aug 22     | Hire a Host-Picnic   | 0.3                |
|                                     | Oct 2      | Doggie Day Expo  | 0.3                |
|                                     | Oct 2      | St Vincent De Paul-Race  | 0.3                |
|                                     | Oct 9      | Autumn Woods Classic-Race  | 1.9                |
|                                     | Oct 10     | Apple Cider Demonstration  | 0.4                |
|                                     | Year round | Formal program visits not counted in regular sample and not part of other special events | 9.2                |
|                                     | Sch Yr     | School groups @ nature center  | 9.5                |

## Table 2: Special event counts for 2010

(Note: these events occurred at times that were specifically not sampled to avoid double-counting)

| Agency/Park                                  | Date       | Event  | Visits<br>(1,000s) |
|--|------------|--|--------------------|
| <b>THREE RIVERS PARK DISTRICT: continued</b> |            |  |                    |
| <b>Fish Lake RP</b>                          |            | <b>None</b>  | <b>0.2</b>         |
|  | Year round | Formal program visits not counted in regular sample and not part of other special events | 0.1                |
|  | Sch Yr     | School groups @ park   | 0.1                |
| <b>Gale Woods</b>                            |            | <b>TOTAL</b>   | <b>24.7</b>        |
|  | May 15     | Jaeger-Reception   | 0.3                |
|  | Apr 9      | Farmyard Fun Days  | 0.3                |
|  | Apr 10     | Spring into Farming  | 0.3                |
|  | Aug 26     | XC Race-Southwest High School  | 0.3                |
|  | Sep 4      | Luebke-Reception   | 0.3                |
|  | Sep 10     | XC Race-Hopkins High School  | 1.5                |
|  | Sep 21     | XC Race-Westonka High School   | 0.4                |
|  | Sep 26     | Stages Theater Company-Barn Use  | 0.5                |
|  | Oct 9      | Celebrate the Harvest  | 0.4                |
|  | Oct 10     | Brakke-Reception   | 0.3                |
|  | Oct 14     | XC Race-Classic Lake   | 0.5                |
|  | Oct 27     | XC Race-Section 6AA  | 0.4                |
|  | Oct 30     | Hegnar-Reception   | 0.3                |
|  | Oct 30     | XC Race-Westonka High School   | 0.3                |
|  | Year round | Formal program visits not counted in regular sample and not part of other special events | 6.6                |
|  | Sch Yr     | School groups @ farm   | 12.0               |
| <b>Hyland Lake PR</b>                        |            | <b>TOTAL</b>   | <b>204.8</b>       |
|  | Winter     | Downhill Ski Area Enterprise Facilities  | 168.7              |
|  | May 1      | Raptor Release   | 2.9                |
|  | Apr 17     | Trail Mix-Race   | 1.0                |
|  | Sep 11     | Target Book Festival   | 7.8                |
|  | Sep 25     | Alzheimers Walk  | 4.0                |
|  | Oct 1      | Chairlift Rides  | 0.7                |
|  | Oct 2      | Chairlift Rides  | 1.0                |
|  | Year round | Formal program visits not counted in regular sample and not part of other special events | 6.1                |
|  | Sch Yr     | School groups @ nature center  | 12.6               |
| <b>Lake Independence RT</b>                  |            | <b>None</b>  | -                  |
| <b>Lake Minnetonka RP</b>                    |            | <b>TOTAL</b>   | <b>4.4</b>         |
|  | Year round | Formal program visits not counted in regular sample and not part of other special events | 0.2                |
|  | Winter     | Snowmobile trail use   | 1.5                |
|  | Sch Yr     | School groups @ visitor center   | 2.7                |
| <b>Lake Minnetonka Islands</b>               |            | <b>None</b>  | -                  |
| <b>Lake Minnetonka LRT RT</b>                |            | <b>None</b>  | <b>2.0</b>         |
|  | May 2      | Wells Fargo 1/2 Marathon   | 2.0                |
| <b>Lake Rebecca PR</b>                       |            | <b>TOTAL</b>   | <b>6.5</b>         |
|  | Winter     | Snowmobile trail use   | 1.0                |
|  | May 23     | Minneapolis Laestadian Church-Picnic   | 0.3                |
|  | Jun 13     | Varela-Picnic  | 0.5                |
|  | Jun 26     | Kopp-General Use   | 0.3                |
|  | Jun 27     | First Apostolic Lutheran-Picnic  | 0.3                |
|  | Jul 24     | Thaokue Inc-Picnic   | 0.4                |
|  | Aug 1      | Living Word Church-Picnic  | 2.0                |
|  | Aug 14     | Mintahoe Catering-Picnic   | 1.0                |
|  | Aug 18     | Woodbridge Church-Picnic   | 0.4                |
|  | Year round | Formal program visits not counted in regular sample and not part of other special events | 0.1                |
|  | Sch Yr     | School groups @ park   | 0.2                |
| <b>Luce Line RT</b>                          |            | <b>None</b>  | -                  |
| <b>Medicine Lake RT</b>                      |            | <b>None</b>  | <b>2.0</b>         |
|  | May 22     | Maple Grove 1/2 Marathon   | 2.0                |
| <b>Minnesota River Bluffs LRT RT</b>         |            | <b>None</b>  | -                  |
| <b>Noerenberg Gardens SRF</b>                |            | <b>None</b>  | -                  |
| <b>North Cedar Lake LRT RT</b>               |            | <b>None</b>  | -                  |

## Table 2: Special event counts for 2010

(Note: these events occurred at times that were specifically not sampled to avoid double-counting)

| Agency/Park                                  | Date | Event  | Visits<br>(1,000s) |
|--|------|--|--------------------|
| <b>THREE RIVERS PARK DISTRICT: continued</b> |      |  |                    |
| <b>North Mississippi RP</b>                  |      | <b>TOTAL</b>   | <b>6.6</b>         |
| Year round                                   |      | Formal program visits not counted in regular sample and not part of other special events | 1.7                |
| Sch Yr                                       |      | School groups @ nature center  | 4.9                |
| <b>Northeast Diagonal RT</b>                 |      | <b>None</b>  | -                  |
| <b>Rush Creek RT</b>                         |      | <b>None</b>  | <b>1.3</b>         |
| Sep 19                                       |      | Purple Ride  | 1.3                |
| <b>Shingle Creek RT</b>                      |      | <b>None</b>  | -                  |
| <b>Silverwood SRF</b>                        |      | <b>TOTAL</b>   | <b>8.7</b>         |
| Mar 13                                       |      | Andrews-Reception  | 0.3                |
| Jul 16                                       |      | Madison-Reception  | 0.3                |
| Jul 31                                       |      | Jeske-Reception  | 0.3                |
| Aug 21                                       |      | Newstrom-Reception   | 0.3                |
| Dec 18                                       |      | Candy Cane Hunt  | 0.3                |
| Year round                                   |      | Formal program visits not counted in regular sample and not part of other special events | 5.9                |
| Sch Yr                                       |      | School groups @ nature center  | 1.3                |
| <b>WASHINGTON COUNTY:</b>                    |      |  |                    |
| <b>Big Marine Park Reserve</b>               |      | <b>TOTAL</b>   | <b>3.5</b>         |
| Jun 01                                       |      | Christ the Redeemer Church Picnic  | 0.3                |
| Jun 09                                       |      | Spanish Immersion Charter School   | 0.3                |
| Jun 17                                       |      | Boys Youth Sports Picnic   | 0.3                |
| Jun 23                                       |      | WBL Extended Day   | 0.4                |
| Jul 12                                       |      | Washington County Fire and Dive Teams  | 0.3                |
| Jul 30                                       |      | Youth Bass Championship  | 0.3                |
| Aug 02                                       |      | NW Family Y  | 0.3                |
| Aug 03                                       |      | NW Family Y  | 0.3                |
| Aug 04                                       |      | NW Family Y  | 0.3                |
| Aug 05                                       |      | NW Family Y  | 0.3                |
| Sep 19                                       |      | BMPR Triathlon   | 0.4                |
| <b>Cottage Grove Ravine RP</b>               |      | <b>TOTAL</b>   | <b>3.5</b>         |
| Winter                                       |      | Snowmobile Use   | 3.5                |
| <b>Hardwood Creek RT</b>                     |      | <b>TOTAL</b>   | <b>0.3</b>         |
| Oct 02                                       |      | Wilson Tool  | 0.3                |
| <b>Lake Elmo PR</b>                          |      | <b>TOTAL</b>   | <b>10.6</b>        |
| Winter                                       |      | Snowmobile use   | 3.5                |
| May 15                                       |      | Oakdale Duathlon   | 0.5                |
| Jun 11                                       |      | Museum Magnet  | 0.3                |
| Jun 20                                       |      | Long Her Family  | 0.3                |
| Jul 11                                       |      | Chao Khang Family  | 0.3                |
| Jul 25                                       |      | New York Mint  | 0.9                |
| Aug 14                                       |      | Paul Yang Family   | 0.3                |
| Aug 22                                       |      | Vang Her Family  | 0.3                |
| Sep 18                                       |      | Woodbury GS Picnic   | 0.5                |
| Sep 11                                       |      | Bluegrass Festival   | 3.0                |
| Oct 24                                       |      | Great Pumkin Chase   | 0.3                |
| Dec 18                                       |      | Solstice Ski/Walk  | 0.4                |
| <b>Pine Point Park RP</b>                    |      | <b>TOTAL</b>   | <b>1.3</b>         |
| May 08                                       |      | MS 60/30   | 1.0                |
| Aug 29                                       |      | Woodbury Days Bike Ride  | 0.3                |
| <b>Square Lake SRF</b>                       |      | <b>TOTAL</b>   | <b>2.3</b>         |
| Jul 24                                       |      | Lumber Jack Days Race  | 1.5                |
| Sep 11                                       |      | Triathlon  | 0.5                |
| Sep 12                                       |      | Triathlon  | 0.3                |
| <b>St. Croix Bluffs RP</b>                   |      | <b>TOTAL</b>   | <b>3.0</b>         |
| May 16                                       |      | Apple Blossom Run  | 0.6                |
| Jun 15                                       |      | Oakland Jr. High Picnic/Service Project  | 0.4                |
| Jun 24                                       |      | USAC   | 0.3                |
| Jul 24                                       |      | First Hmong Assembly of God  | 0.4                |
| Sep 09                                       |      | Cross Country Meet   | 0.4                |
| Sep 14                                       |      | Cross Country Meet   | 0.4                |
| Oct 19                                       |      | Cross Country Meet   | 0.5                |

**Table 3: Comparison of 2009 and 2010 visitation**

| <b>Agency</b>               | <b>2009</b>      | <b>2010</b>      | <b># change</b>  | <b>% change</b> |
|-----------------------------|------------------|------------------|------------------|-----------------|
|                             | <i>(1,000's)</i> | <i>(1,000's)</i> | <i>(1,000's)</i> |                 |
| Anoka                       | 3,280.7          | 3,269.6          | (11.1)           | -0.3%           |
| Bloomington <sup>1</sup>    | 512.6            | 610.4            | 97.8             | 19.1%           |
| Carver                      | 265.5            | 307.3            | 41.8             | 15.7%           |
| Dakota                      | 929.8            | 932.9            | 3.2              | 0.3%            |
| Minneapolis                 | 14,113.0         | 14,768.1         | 655.0            | 4.6%            |
| Ramsey <sup>2</sup>         | 3,057.3          | 3,714.3          | 656.9            | 21.5%           |
| St Paul                     | 7,229.5          | 7,628.2          | 398.7            | 5.5%            |
| Scott County <sup>3</sup>   | 255.1            | 313.5            | 58.4             | 22.9%           |
| Three Rivers (Hennepin Co.) | 6,865.8          | 7,646.7          | 780.9            | 11.4%           |
| Three Rivers (Scott County) | 292.0            | 282.3            | (9.7)            | -3.3%           |
| Washington                  | 1,261.2          | 1,394.3          | 133.0            | 10.5%           |
| <b>Total</b>                | <b>38,062.6</b>  | <b>40,867.5</b>  | <b>2,804.9</b>   | <b>7.4%</b>     |

**Notes:**

<sup>1</sup> The 2009 estimate for regional parks, which is based on an average of 2006-2009 data, included fewer visitors to Bush Lake in the 2006 counts compared with the 2010 counts. The 2010 estimate is based on an average of 2007-2010 data. With the lower numbers from 2006 dropping from the calculation and being replaced with higher numbers in 2010, the 2010 estimate has increased.

<sup>2</sup> Regional trails in Ramsey County were reclassified in 2010 to incorporate entrance points that had not been captured in previous counts

<sup>3</sup> Cedar Lake Farm Regional Park was open only on weekends during the summer and part of the fall in 2009. The park was seasonally open daily in the summer and a portion of the spring and fall of 2010, which resulted in an increase in total visits.

**Table 4: Comparison of 2009 and 2010 park vs. trail visitation**

|                           | <b>2009</b>      | <b>2010</b>      | <b># change</b>  | <b>% change</b> | <b>% of all visits in 2010</b> |
|---------------------------|------------------|------------------|------------------|-----------------|--------------------------------|
|                           | <i>(1,000's)</i> | <i>(1,000's)</i> | <i>(1,000's)</i> |                 |                                |
| Trail Visits <sup>1</sup> | 8,238.3          | 9,747.4          | 1,509.1          | 18.3%           | 24%                            |
| Park/Reserve/SRF Visits   | 29,824.2         | 31,120.1         | 1,295.9          | 4.3%            | 76%                            |
| <b>Total Visits</b>       | <b>38,062.6</b>  | <b>40,867.5</b>  | <b>2,804.9</b>   | <b>7.4%</b>     | <b>100%</b>                    |

**Notes:**

<sup>1</sup> About 80% of all visits to the Minneapolis Chain of Lakes and Anoka County Riverfront RP are trail visits. Mississippi Gorge Regional Park is also more similar to a parkway with a regional trail than a regional park. However, the above trail totals do not include those trail visits.

If Mississippi Gorge, Minneapolis Chain of Lakes and Anoka County Riverfront RP trail visits are included in the regional trail total, **about 16.26 million, or 39.8% of all visits, are trail visits.**

**Table 5: Most-visited regional parks and trails - 2010**

| Rank by visits                    | Park/trail                              | Agency                     | 2010 Visitation<br>(1,000's) | Cumulative percent of total visitation |
|-----------------------------------|---|----------------------------|------------------------------|--|
| 1                                 | Minneapolis Chain-of-Lakes RP           | Minneapolis                | 5,100.8                      | 12.5%                                  |
| 2                                 | Como RP, Zoo & Conservatory SRF         | St. Paul                   | 3,561.7                      | 21.2%                                  |
| 3                                 | Mississippi Gorge RP                    | Minneapolis/St. Paul       | 2,181.6                      | 26.5%                                  |
| 4                                 | Minnehaha Parkway RT                    | Minneapolis                | 1,602.8                      | 30.5%                                  |
| 5                                 | Nokomis-Hiawatha RP                     | Minneapolis                | 1,431.7                      | 34.0%                                  |
| 6                                 | Central Mississippi Riverfront RP       | Minneapolis                | 1,431.1                      | 37.5%                                  |
| 7                                 | Hyland-Bush-Anderson Lakes PR           | Three Rivers/Bloomington   | 1,357.8                      | 40.8%                                  |
| 8                                 | Minnehaha RP                            | Minneapolis                | 1,276.2                      | 43.9%                                  |
| 9                                 | Phalen-Keller RP                        | St. Paul/Ramsey County     | 1,170.5                      | 46.8%                                  |
| 10                                | Lilydale-Harriet Island-Cherokee Hts RP | St. Paul                   | 1,113.7                      | 49.5%                                  |
| 11                                | Coon Rapids Dam RP                      | Anoka County/Three Rivers  | 859.5                        | 51.6%                                  |
| 12                                | Bunker Hills RP                         | Anoka County               | 823.9                        | 53.6%                                  |
| 13                                | Elm Creek PR                            | Three Rivers               | 817.2                        | 55.6%                                  |
| 14                                | Battle Creek/Indian Mounds RP           | Ramsey County/St. Paul     | 741.7                        | 57.4%                                  |
| 15                                | Kenilworth RT                           | Minneapolis                | 621.8                        | 59.0%                                  |
| 16                                | Victory Memorial Parkway RT             | Minneapolis                | 595.1                        | 60.4%                                  |
| 17                                | Grass-Vadnais-Snail Lake RP             | Ramsey County              | 585.1                        | 61.8%                                  |
| 18                                | Long Lake RP                            | Ramsey County              | 574.7                        | 63.2%                                  |
| 19                                | Rice Creek West RT                      | Anoka County/Ramsey County | 547.4                        | 64.6%                                  |
| 20                                | Lake Elmo PR                            | Washington County          | 502.3                        | 65.8%                                  |
| <b>Total</b>                      |   |                            | <b>26,896.6</b>              |  |
| <b>Percent of 2010 Visitation</b> |   |                            | <b>65.8%</b>                 |  |

**Table 6: Urban parks visitation - 2010**

| Agency                                     | 2010 Visitation<br>(1,000's) |
|--|------------------------------|
| Minneapolis Parks Total                    | 14,768.1                     |
| St. Paul Parks Total                       | 7,628.2                      |
| <b>Urban Total</b>                         | <b>22,396.3</b>              |
| <b>Urban Percentage of 2010 visitation</b> | <b>54.8%</b>                 |

**Table 7: Como visitation - park and zoo/conservatory**

| Park Unit                                | 2010 Visitation<br>(1,000's) | 2009<br>%   |
|--|------------------------------|-------------|
| Como Zoo & Conservatory SRF <sup>1</sup> | 2,820.9                      | 79.2%       |
| Como Park (non-zoo/conservatory visits)  | 740.8                        | 20.8%       |
| <b>Como Total</b>                        | <b>3,561.7</b>               | <b>100%</b> |

**Notes:**

<sup>1</sup> Como Zoo & Conservatory Special Recreation Feature estimates are based on visitor interviews conducted in 2008. That data indicated that 79.2% of all Como visitors were primarily visiting the Zoo & Conservatory. Zoo/Conservatory SRF visitors could possibly use Como RP for secondary activities during their visit, so the total use of Como RP is higher than the 20.8% listed for non-zoo/conservatory visits.

**Table 8: Visitation estimates by agency for operations and maintenance funding formula purposes - 2010**

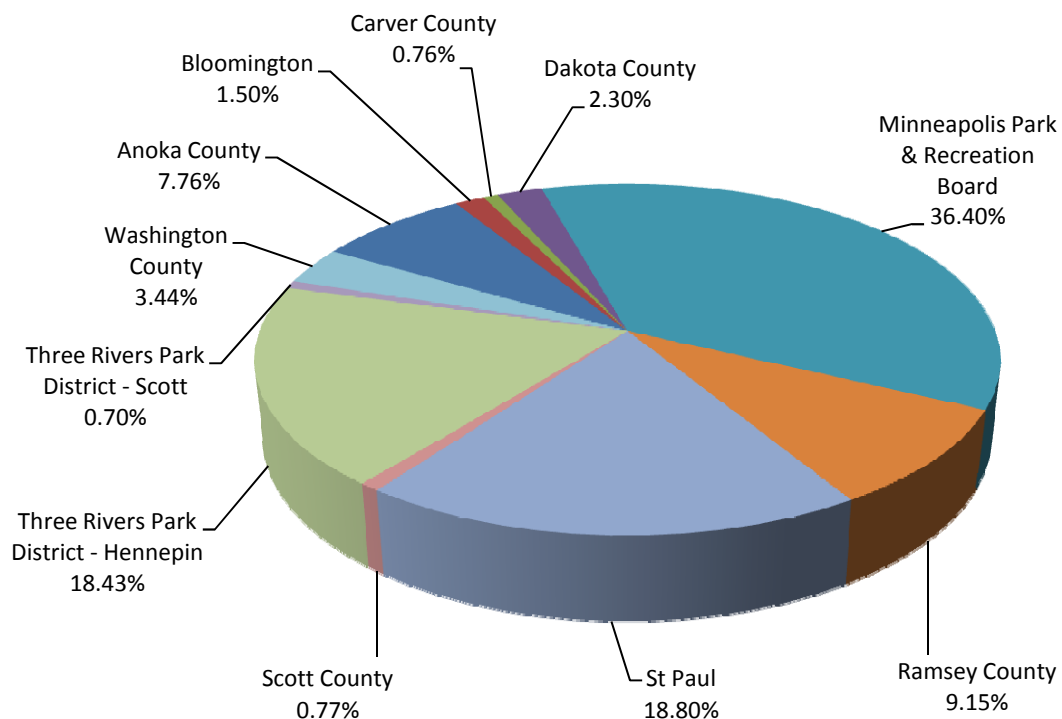
| <b>Agency</b>                                      | <b>2010 Visitation<br/>(1,000's)</b> | <b>Percentage of<br/>total <sup>1</sup></b> |
|--|--------------------------------------|---|
| Anoka County <sup>2,3</sup>                        | 3,147.2                              | 7.76%                                       |
| Bloomington  | 610.4                                | 1.50%                                       |
| Carver County                                      | 307.3                                | 0.76%                                       |
| Dakota County                                      | 932.9                                | 2.30%                                       |
| Minneapolis Park & Recreation Board                | 14,768.1                             | 36.40%                                      |
| Ramsey County                                      | 3,714.3                              | 9.15%                                       |
| St Paul <sup>2</sup>                               | 7,626.9                              | 18.80%                                      |
| Scott County                                       | 313.5                                | 0.77%                                       |
| Three Rivers Park District - Hennepin <sup>2</sup> | 7,478.0                              | 18.43%                                      |
| Three Rivers Park District - Scott                 | 282.3                                | 0.70%                                       |
| Washington County                                  | 1,394.3                              | 3.44%                                       |
| <b>TOTAL</b>                                       | <b>40,575.1</b>                      | <b>100.00%</b>                              |

**Notes:**

<sup>1</sup> Percentages are given to the second decimal point for use in the O&M funding formula.

<sup>2</sup> O&M visitation estimates do not include enterprise facility visitation (Bunker Beach and downhill skiing at Hyland and Como).

<sup>3</sup> Counts prior to 2009 at Bunker Hills Regional Park included Bunker Beach as a defined entrance at the park. Beginning in 2009, Anoka County has been reporting visitation to Bunker Beach based on ticket sales for admission. This visitation is now being reported in Table 2 rather in the base summer visitation. Since Bunker Beach is an enterprise facility and its specific visitation is being reported, the O&M visitation estimates have now been adjusted.



**Table 9: Regional Parks System units sample counted 2010**

| <b>Regional Parks</b> |   | <b>Park Agency</b>           | <b>Regional Trails</b>             |                                  | <b>Park Agency</b>           |
|-----------------------|---|------------------------------|------------------------------------|----------------------------------|------------------------------|
| 1                     | Anoka County Riverfront RP                    | Anoka County                 | 1                                  | Central Anoka RT                 | Anoka County                 |
| 2                     | Bunker Hills RP                               | Anoka County                 | 2                                  | Mississippi River RT (Anoka Co)  | Anoka County                 |
| 3                     | Lake George RP                                | Anoka County                 | 3                                  | Rice Creek North RT              | Anoka County/Ramsey County   |
| 4                     | Martin-Island-Linwood Lakes RP                | Anoka County                 | 4                                  | Rice Creek West RT               | Anoka County/Ramsey County   |
| 5                     | Rum River RP                                  | Anoka County                 | 5                                  | Big Rivers RT                    | Dakota County                |
| 6                     | Coon Rapids Dam RP                            | Anoka County/Three Rivers    | 6                                  | Mississippi River RT (Dakota Co) | Dakota County                |
| 7                     | Baylor RP                                     | Carver County                | 7                                  | North Urban RT                   | Dakota County                |
| 8                     | Lake Minnewashta RP                           | Carver County                | 8                                  | Cedar Lake RT                    | Minneapolis Park & Rec Board |
| 9                     | Lake Waconia RP                               | Carver County                | 9                                  | Columbia Parkway RT              | Minneapolis Park & Rec Board |
| 10                    | Lake Byllesby RP                              | Dakota County                | 10                                 | Kenilworth RT                    | Minneapolis Park & Rec Board |
| 11                    | Lebanon Hills RP                              | Dakota County                | 11                                 | Luce Line RT                     | Minneapolis/Three Rivers     |
| 12                    | Central Mississippi Riverfront RP             | Minneapolis Park & Rec Board | 12                                 | Minnehaha Parkway RT             | Minneapolis Park & Rec Board |
| 13                    | Minneapolis Chain-of-Lakes RP                 | Minneapolis Park & Rec Board | 13                                 | Northeast Diagonal RT            | Minneapolis/Three Rivers     |
| 14                    | Minnehaha RP                                  | Minneapolis Park & Rec Board | 14                                 | Ridgeway Parkway RT              | Minneapolis Park & Rec Board |
| 15                    | Nokomis-Hiawatha RP                           | Minneapolis Park & Rec Board | 15                                 | St. Anthony Parkway RT           | Minneapolis Park & Rec Board |
| 16                    | Theodore Wirth RP                             | Minneapolis Park & Rec Board | 16                                 | Victory Memorial Parkway RT      | Minneapolis Park & Rec Board |
| 17                    | Mississippi Gorge RP                          | Minneapolis/St. Paul         | 17                                 | Birch Lake RT                    | Ramsey County                |
| 18                    | North Mississippi RP                          | Minneapolis/Three Rivers     | 18                                 | Highway 96 RT                    | Ramsey County                |
| 19                    | Bald Eagle-Otter Lake RP                      | Ramsey County                | 19                                 | Trout Brook RT                   | Ramsey County                |
| 20                    | Long Lake RP                                  | Ramsey County                | 20                                 | Bruce Vento RT                   | Ramsey County/St. Paul       |
| 21                    | Snail Lake (Grass-Vadnais-Snail) RP           | Ramsey County                | 21                                 | Samuel Morgan RT                 | St. Paul                     |
| 22                    | Tony Schmidt RP                               | Ramsey County                | 22                                 | Scott County RT                  | Scott County                 |
| 23                    | Battle Creek & Indian Mounds RP               | Ramsey County/St. Paul       | 23                                 | Bassett Creek RT                 | Three Rivers Park District   |
| 24                    | Como RP                                       | St. Paul                     | 24                                 | Cedar Lake LRT RT                | Three Rivers Park District   |
| 25                    | Hidden Falls-Crosby Farm RP                   | St. Paul                     | 25                                 | Dakota Rail RT                   | Three Rivers Park District   |
| 26                    | Lilydale-Harriet Island & Cherokee Heights RP | St. Paul                     | 26                                 | Lake Independence RT             | Three Rivers Park District   |
| 27                    | Phalen-Keller RP                              | St. Paul/Ramsey County       | 27                                 | Lake Minnetonka LRT RT           | Three Rivers Park District   |
| 28                    | Cedar Lake Farm RP                            | Scott County                 | 28                                 | Medicine Lake RT                 | Three Rivers Park District   |
| 29                    | Bryant Lake RP                                | Three Rivers Park District   | 29                                 | Minnesota River Bluffs LRT RT    | Three Rivers Park District   |
| 30                    | Clifton E. French RP                          | Three Rivers Park District   | 30                                 | North Cedar Lake RT              | Three Rivers Park District   |
| 31                    | Eagle Lake RP                                 | Three Rivers Park District   | 31                                 | Rush Creek RT                    | Three Rivers Park District   |
| 32                    | Fish Lake RP                                  | Three Rivers Park District   | 32                                 | Shingle Creek RT                 | Three Rivers Park District   |
| 33                    | Lake Minnetonka Islands RP                    | Three Rivers Park District   | 33                                 | Hardwood Creek RT                | Washington County            |
| 34                    | Lake Minnetonka RP                            | Three Rivers Park District   |                                    |                                  |                              |
| 35                    | Cleary Lake RP                                | Three Rivers/Scott County    |                                    |                                  |                              |
| 36                    | Cottage Grove Ravine RP                       | Washington County            |                                    |                                  |                              |
| 37                    | Pine Point RP                                 | Washington County            |                                    |                                  |                              |
| 38                    | St. Croix Bluffs RP                           | Washington County            |                                    |                                  |                              |
| <b>Park Reserves</b>  |   |                              | <b>Special Recreation Features</b> |                                  |                              |
| 1                     | Rice Creek Chain-of-Lakes PR                  | Anoka County                 | 1                                  | Como Conservatory                | St. Paul                     |
| 2                     | Miesville Ravine PR                           | Dakota County                | 2                                  | Como Zoo                         | St. Paul                     |
| 3                     | Spring Lake PR                                | Dakota County                | 3                                  | Gale Woods                       | Three Rivers Park District   |
| 4                     | Baker PR                                      | Three Rivers Park District   | 4                                  | Noerenberg Gardens SRF           | Three Rivers Park District   |
| 5                     | Carver PR                                     | Three Rivers Park District   | 5                                  | Silverwood SRF                   | Three Rivers Park District   |
| 6                     | Crow-Hassan PR                                | Three Rivers Park District   | 6                                  | Square Lake SRF                  | Washington County            |
| 7                     | Elm Creek PR                                  | Three Rivers Park District   |                                    |                                  |                              |
| 8                     | Lake Rebecca PR                               | Three Rivers Park District   |                                    |                                  |                              |
| 9                     | Hyland-Bush-Anderson L. PR                    | Three Rivers/Bloomington     |                                    |                                  |                              |
| 10                    | Murphy-Hanrehan PR                            | Three Rivers/Scott County    |                                    |                                  |                              |
| 11                    | Big Marine PR                                 | Washington County            |                                    |                                  |                              |
| 12                    | Lake Elmo PR                                  | Washington County            |                                    |                                  |                              |
|                       |   |                              | <b>89</b>                          | <b>TOTAL UNITS</b>               |                              |

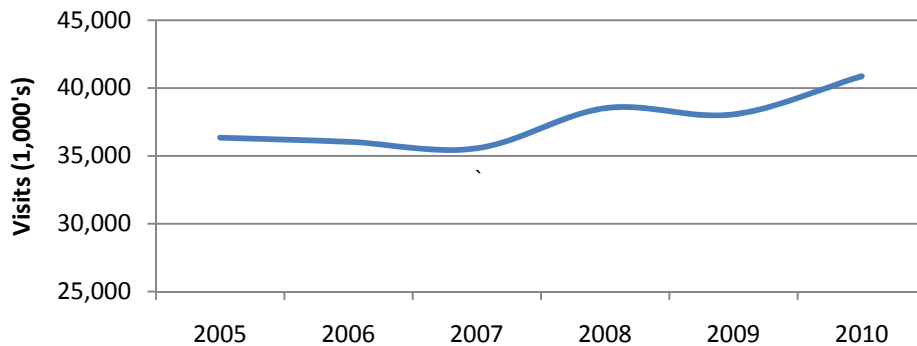
**Table 10: Comparison of estimated visits from 2005 to 2010**

|                                     | Visits in 1,000s per year |                 |                 |                 |                 |                 |
|-------------------------------------|---------------------------|-----------------|-----------------|-----------------|-----------------|-----------------|
|                                     | 2005                      | 2006            | 2007            | 2008            | 2009            | 2010            |
| Anoka County                        | 3,170.6                   | 2,820.5         | 2,943.8         | 3,280.7         | 3,280.7         | 3,269.6         |
| Bloomington                         | 759.9                     | 708.0           | 450.8           | 526.8           | 512.6           | 610.4           |
| Carver County                       | 305.9                     | 305.3           | 271.2           | 265.0           | 265.5           | 307.3           |
| Dakota County                       | 1,047.1                   | 873.7           | 795.0           | 879.6           | 929.8           | 932.9           |
| Mpls Park & Rec. Board              | 14,063.8                  | 13,868.6        | 13,404.4        | 15,442.4        | 14,113.0        | 14,768.1        |
| Ramsey County                       | 3,720.8                   | 3,400.3         | 3,265.9         | 3,286.2         | 3,057.3         | 3,714.3         |
| St. Paul                            | 6,536.2                   | 6,876.4         | 7,196.1         | 6,649.7         | 7,229.5         | 7,628.2         |
| Scott County                        | 44.0                      | 59.6            | 90.2            | 259.9           | 255.1           | 313.5           |
| Three Rivers                        | 5,330.4                   | 5,697.0         | 5,883.9         | 6,472.6         | 6,865.8         | 7,646.7         |
| Three Rivers (Scott County)         | 274.5                     | 296.7           | 258.6           | 302.0           | 292.0           | 282.3           |
| Washington County                   | 1,105.2                   | 1,136.8         | 1,003.8         | 1,158.4         | 1,261.2         | 1,394.3         |
| <b>REGIONAL TOTALS <sup>1</sup></b> | <b>36,358.4</b>           | <b>36,042.9</b> | <b>35,563.7</b> | <b>38,523.3</b> | <b>38,062.5</b> | <b>40,867.5</b> |
| % annual increase                   | -                         | -0.9%           | -1.3%           | 8.3%            | -1.2%           | 7.4%            |

**Notes:**

<sup>1</sup> Visitation estimates for 2005-2007 were adjusted to reflect the seasonal multipliers from the *Metropolitan Council Regional Parks and Trails Survey 2008* so that estimates are comparable across all years. Therefore, the estimates shown in Table 10 will not correspond to the published annual use estimates for 2005-2007.

**Total Annual Visits: 2005 to 2010**



**Table 11: Top activities in the Regional Parks System - 2010**

| Activity                       | % of park activity occasions <sup>1</sup> | # of park activity occasions | % of trail activity occasions | # of trail activity occasions | Total # of activity occasions | % of total visits  |
|--------------------------------|---|------------------------------|-------------------------------|-------------------------------|-------------------------------|--------------------|
|                                |   | 1,000's                      |                               | 1,000's                       | 1,000's                       |                    |
| Walking/hiking                 | 21%                                       | 6,535                        | 30%                           | 2,924                         | 9,459                         | 23%                |
| Biking                         | 10%                                       | 3,112                        | 45%                           | 4,386                         | 7,498                         | 18%                |
| Swimming <sup>3</sup>          | 16%                                       | 4,979                        | 2%                            | 195                           | 5,174                         | 13%                |
| Picnicking                     | 10%                                       | 3,112                        | 0%                            | -                             | 3,112                         | 8%                 |
| Relaxing <sup>2</sup>          | 9%  | 2,801                        | 2%                            | 195                           | 2,996                         | 7%                 |
| Jogging/running                | 5%  | 1,556                        | 10%                           | 975                           | 2,531                         | 6%                 |
| Playground use <sup>3</sup>    | 7%  | 2,178                        | 1%                            | 97                            | 2,276                         | 6%                 |
| Dog-walking                    | 5%  | 1,556                        | 7%                            | 682                           | 2,238                         | 5%                 |
| Sunbathing <sup>3</sup>        | 6%  | 1,867                        | 1%                            | 97                            | 1,965                         | 5%                 |
| Fishing <sup>3</sup>           | 6%  | 1,805                        | 1%                            | 97                            | 1,902                         | 5%                 |
| Boating                        | 4%  | 1,245                        | 0%                            | -                             | 1,245                         | 3%                 |
| Zoo visits (Como)              | 4%  | 1,245                        | 0%                            | -                             | 1,245                         | 3%                 |
| In-line skating                | 2%  | 622                          | 4%                            | 390                           | 1,012                         | 2%                 |
| Camping                        | 2%  | 622                          | 0%                            | -                             | 622                           | 2%                 |
|                                |   | <b>Regional Parks</b>        |                               | <b>Regional Trails</b>        |                               | <b>System-wide</b> |
| <b>2010 system-wide visits</b> |   |                              |                               |                               |                               |                    |
| (in 1,000's of visits)         |   | 31,120.1                     |                               | 9,747.4                       |                               | 40,867.5           |
| % of 2010 visits               |   | 76%                          |                               | 24%                           |                               | 100%               |

**Notes:**

<sup>1</sup> Activity pattern data of regional park and trail visitors was collected in 2008 and published in the *Metropolitan Council Regional Parks and Trails Survey 2008*. The activity patterns were applied to the 2008 visit estimate to generate this table. Visitors could do more than one activity during their visit to a regional park or trail. Each time they participated in an activity, it was considered an activity occasion. Therefore, the total number of activity occasions is greater than the actual number of visits.

<sup>2</sup> "Relaxing" was a general activity on a list of activities that park visitors used to indicate what they did during their park visit. This activity was not specifically defined.

<sup>3</sup> For trail visits, survey respondents indicated that the trails were providing access to these activities. For example, 2% of trail visits provided access to swimming and 1% of trail visits provided access to fishing.

**Table 12: Visitor origin by agency - 2010**

| Agency                                  | Total visits<br>(1,000s) | Number and percent of visits from people who live in the following agency jurisdictions: (in 1,000s) |              |                  |                  |                |                  |                |                 |                               |                      |                |                 |                  |
|---|--------------------------|--|--------------|------------------|------------------|----------------|------------------|----------------|-----------------|-------------------------------|----------------------|----------------|-----------------|------------------|
|   |                          | Anoka<br>County  | Bloomington  | Carver<br>County | Dakota<br>County | Minneapolis    | Ramsey<br>County | St Paul        | Scott<br>County | Three<br>Rivers<br>(Hennepin) | Washington<br>County | Greater<br>MN  | Out of<br>state | Outside<br>of US |
| <b>ANOKA COUNTY</b>                     |                          |  |              |                  |                  |                |                  |                |                 |                               |                      |                |                 |                  |
| Total Visitation                        | <b>3,269.6</b>           | <b>1,854.9</b>   | 8.2          | 4.1              | 32.6             | 134.5          | 644.1            | 77.5           | 4.1             | 232.4                         | 57.1                 | 142.7          | 77.5            | -                |
| Visitation by Percentage                | <b>8.0%</b>              | <b>56.7%</b>   | 0.2%         | 0.1%             | 1.0%             | 4.1%           | 19.7%            | 2.4%           | 0.1%            | 7.1%                          | 1.7%                 | 4.4%           | 2.4%            | 0.0%             |
| <b>BLOOMINGTON</b>                      |                          |  |              |                  |                  |                |                  |                |                 |                               |                      |                |                 |                  |
| Total Visitation                        | <b>610.4</b>             | 4.7  | <b>332.5</b> | 6.2              | 29.7             | 40.6           | 4.7              | 15.6           | 32.8            | 112.4                         | 3.1                  | 6.2            | 20.3            | 1.6              |
| Visitation by Percentage                | <b>1.5%</b>              | 0.8%   | <b>54.5%</b> | 1.0%             | 4.9%             | 6.6%           | 0.8%             | 2.6%           | 5.4%            | 18.4%                         | 0.5%                 | 1.0%           | 3.3%            | 0.3%             |
| <b>CARVER COUNTY</b>                    |                          |  |              |                  |                  |                |                  |                |                 |                               |                      |                |                 |                  |
| Total Visitation                        | <b>307.3</b>             | 2.4  | 4.8          | <b>146.5</b>     | 15.8             | 8.7            | 0.8              | 1.6            | 15.8            | 62.6                          | 0.8                  | 42.0           | 5.5             | -                |
| Visitation by Percentage                | <b>0.8%</b>              | 0.8%   | 1.5%         | <b>47.7%</b>     | 5.2%             | 2.8%           | 0.3%             | 0.5%           | 5.2%            | 20.4%                         | 0.3%                 | 13.7%          | 1.8%            | 0.0%             |
| <b>DAKOTA COUNTY</b>                    |                          |  |              |                  |                  |                |                  |                |                 |                               |                      |                |                 |                  |
| Total Visitation                        | <b>932.9</b>             | 6.9  | 18.3         | 2.3              | <b>600.6</b>     | 51.4           | 18.3             | 105.1          | 9.1             | 33.1                          | 19.4                 | 37.7           | 30.8            | -                |
| Visitation by Percentage                | <b>2.3%</b>              | 0.7%   | 2.0%         | 0.2%             | <b>64.4%</b>     | 5.5%           | 2.0%             | 11.3%          | 1.0%            | 3.5%                          | 2.1%                 | 4.0%           | 3.3%            | 0.0%             |
| <b>MINNEAPOLIS PARK &amp; REC BOARD</b> |                          |  |              |                  |                  |                |                  |                |                 |                               |                      |                |                 |                  |
| Total Visitation                        | <b>14,768.1</b>          | 308.4  | 325.5        | 34.3             | 376.9            | <b>7,709.5</b> | 342.6            | 736.7          | 68.5            | 4,077.5                       | 68.5                 | 119.9          | 565.4           | 34.3             |
| Visitation by Percentage                | <b>36.1%</b>             | 2.1%   | 2.2%         | 0.2%             | 2.6%             | <b>52.2%</b>   | 2.3%             | 5.0%           | 0.5%            | 27.6%                         | 0.5%                 | 0.8%           | 3.8%            | 0.2%             |
| <b>RAMSEY COUNTY</b>                    |                          |  |              |                  |                  |                |                  |                |                 |                               |                      |                |                 |                  |
| Total Visitation                        | <b>3,714.3</b>           | 351.0  | 4.7          | 4.7              | 42.7             | 66.4           | <b>1,992.3</b>   | 839.6          | -               | 90.1                          | 194.5                | 42.7           | 80.6            | 4.7              |
| Visitation by Percentage                | <b>9.1%</b>              | 9.5%   | 0.1%         | 0.1%             | 1.1%             | 1.8%           | <b>53.6%</b>     | 22.6%          | 0.0%            | 2.4%                          | 5.2%                 | 1.1%           | 2.2%            | 0.1%             |
| <b>ST. PAUL</b>                         |                          |  |              |                  |                  |                |                  |                |                 |                               |                      |                |                 |                  |
| Total Visitation                        | <b>7,628.2</b>           | 228.0  | 38.0         | 19.0             | 684.0            | 551.0          | 589.0            | <b>3,847.4</b> | 38.0            | 361.0                         | 560.5                | 256.5          | 418.0           | 38.0             |
| Visitation by Percentage                | <b>18.7%</b>             | 3.0%   | 0.5%         | 0.2%             | 9.0%             | 7.2%           | 7.7%             | <b>50.4%</b>   | 0.5%            | 4.7%                          | 7.3%                 | 3.4%           | 5.5%            | 0.5%             |
| <b>SCOTT COUNTY / THREE RIVERS</b>      |                          |  |              |                  |                  |                |                  |                |                 |                               |                      |                |                 |                  |
| Total Visitation                        | <b>595.8</b>             | -  | 8.9          | 3.9              | 115.4            | 5.9            | 1.0              | 2.0            | <b>412.3</b>    | 15.8                          | 2.0                  | 18.7           | 8.9             | 1.0              |
| Visitation by Percentage                | <b>1.5%</b>              | 0.0%   | 1.5%         | 0.7%             | 19.4%            | 1.0%           | 0.2%             | 0.3%           | <b>69.2%</b>    | 2.6%                          | 0.3%                 | 3.1%           | 1.5%            | 0.2%             |
| <b>THREE RIVERS PARK DISTRICT</b>       |                          |  |              |                  |                  |                |                  |                |                 |                               |                      |                |                 |                  |
| Total Visitation                        | <b>7,646.7</b>           | 470.0  | 175.2        | 374.4            | 95.6             | 820.4          | 71.7             | 63.7           | 127.4           | <b>4,803.1</b>                | 31.9                 | 430.1          | 159.3           | 23.9             |
| Visitation by Percentage                | <b>18.7%</b>             | 6.1%   | 2.3%         | 4.9%             | 1.3%             | 10.7%          | 0.9%             | 0.8%           | 1.7%            | <b>62.8%</b>                  | 0.4%                 | 5.6%           | 2.1%            | 0.3%             |
| <b>WASHINGTON COUNTY</b>                |                          |  |              |                  |                  |                |                  |                |                 |                               |                      |                |                 |                  |
| Total Visitation                        | <b>1,394.3</b>           | 81.1   | 5.3          | -                | 58.2             | 24.7           | 123.4            | 118.1          | 3.5             | 30.0                          | <b>782.6</b>         | 82.8           | 82.8            | 1.8              |
| Visitation by Percentage                | <b>3.4%</b>              | 5.8%   | 0.4%         | 0.0%             | 4.2%             | 1.8%           | 8.8%             | 8.5%           | 0.3%            | 2.1%                          | <b>56.1%</b>         | 5.9%           | 5.9%            | 0.1%             |
| <b>TOTAL VISITATION</b>                 | <b>40,867.5</b>          | <b>3,307.3</b>   | <b>921.3</b> | <b>595.4</b>     | <b>2,051.5</b>   | <b>9,413.2</b> | <b>3,787.9</b>   | <b>5,807.2</b> | <b>711.7</b>    | <b>9,817.9</b>                | <b>1,720.4</b>       | <b>1,179.4</b> | <b>1,449.1</b>  | <b>105.2</b>     |
| <b>TOTAL VISITATION by PERCENTAGE</b>   | <b>100.0%</b>            | <b>8.1%</b>  | <b>2.3%</b>  | <b>1.5%</b>      | <b>5.0%</b>      | <b>23.0%</b>   | <b>9.3%</b>      | <b>14.2%</b>   | <b>1.7%</b>     | <b>24.0%</b>                  | <b>4.2%</b>          | <b>2.9%</b>    | <b>3.5%</b>     | <b>0.3%</b>      |

**NOTES:**

All visits are listed in units of 1,000.

Local visits are defined as visits to a park by visitors who reside in that park agency's jurisdiction. Local visits for each agency are in bold and are highlighted.

Visitor origin data is from the *Metropolitan Council Regional Parks and Trails Survey 2008*. Percentages were adjusted to disregard "unknown" visitor origin and therefore may differ slightly from the survey report

Three Rivers Park District owns and operates two regional parks in Scott County. The amounts shown in this table reflect visits to park and trail units located in Scott County regardless of managing entity.

**Table 13: Local and non-local visits by agency - 2010**

| Agency   | Total visits<br>(1,000s) | Number and percent of visits from people who live in the following agency jurisdictions: (in 1,000s) |                  |                |                |               |
|--|--------------------------|--|------------------|----------------|----------------|---------------|
|  |                          | Local Visits   | Non-Local Visits |                |                |               |
|  |                          |  | Regional         | Greater MN     | Out of state   | Outside of US |
| <b>ANOKA COUNTY</b>                            |                          |  |                  |                |                |               |
| Total Visitation                               | <b>3,269.60</b>          | 1,854.9  | 1,194.5          | 142.7          | 77.5           | -             |
| Visitation by Percentage                       | <b>8.0%</b>              | 56.7%  | 36.5%            | 4.4%           | 2.4%           | 0.0%          |
| <b>BLOOMINGTON</b>                             |                          |  |                  |                |                |               |
| Total Visitation                               | <b>610.36</b>            | 332.5  | 249.8            | 6.2            | 20.3           | 1.6           |
| Visitation by Percentage                       | <b>1.5%</b>              | 54.5%  | 40.9%            | 1.0%           | 3.3%           | 0.3%          |
| <b>CARVER COUNTY</b>                           |                          |  |                  |                |                |               |
| Total Visitation                               | <b>307.27</b>            | 146.5  | 113.24           | 42.0           | 5.5            | -             |
| Visitation by Percentage                       | <b>0.8%</b>              | 47.7%  | 36.9%            | 13.7%          | 1.8%           | 0.0%          |
| <b>DAKOTA COUNTY</b>                           |                          |  |                  |                |                |               |
| Total Visitation                               | <b>932.93</b>            | 600.6  | 263.8            | 37.7           | 30.8           | -             |
| Visitation by Percentage                       | <b>2.3%</b>              | 64.4%  | 28.3%            | 4.0%           | 3.3%           | 0.0%          |
| <b>MINNEAPOLIS PARK &amp; RECREATION BOARD</b> |                          |  |                  |                |                |               |
| Total Visitation                               | <b>14,768.06</b>         | 7,709.5  | 6,339.0          | 119.9          | 565.4          | 34.3          |
| Visitation by Percentage                       | <b>36.1%</b>             | 52.2%  | 42.9%            | 0.8%           | 3.8%           | 0.2%          |
| <b>RAMSEY COUNTY</b>                           |                          |  |                  |                |                |               |
| Total Visitation                               | <b>3,714.28</b>          | 1,992.3  | 1,593.9          | 42.7           | 80.6           | 4.7           |
| Visitation by Percentage                       | <b>9.1%</b>              | 53.6%  | 42.9%            | 1.1%           | 2.2%           | 0.1%          |
| <b>ST. PAUL</b>                                |                          |  |                  |                |                |               |
| Total Visitation                               | <b>7,628.22</b>          | 3,847.4  | 3,068.4          | 256.5          | 418.0          | 38.0          |
| Visitation by Percentage                       | <b>18.7%</b>             | 50.4%  | 40.2%            | 3.4%           | 5.5%           | 0.5%          |
| <b>SCOTT COUNTY / THREE RIVERS</b>             |                          |  |                  |                |                |               |
| Total Visitation                               | <b>595.80</b>            | 412.3  | 154.9            | 18.7           | 8.9            | 1.0           |
| Visitation by Percentage                       | <b>1.5%</b>              | 69.2%  | 26.0%            | 3.1%           | 1.5%           | 0.2%          |
| <b>THREE RIVERS PARK DISTRICT</b>              |                          |  |                  |                |                |               |
| Total Visitation                               | <b>7,646.68</b>          | 4,803.1  | 2,230.3          | 430.1          | 159.3          | 23.9          |
| Visitation by Percentage                       | <b>18.7%</b>             | 62.8%  | 29.2%            | 5.6%           | 2.1%           | 0.3%          |
| <b>WASHINGTON COUNTY</b>                       |                          |  |                  |                |                |               |
| Total Visitation                               | <b>1,394.27</b>          | 782.6  | 444.2            | 82.8           | 82.8           | 1.8           |
| Visitation by Percentage                       | <b>3.4%</b>              | 56.1%  | 31.9%            | 5.9%           | 5.9%           | 0.1%          |
| <b>TOTAL VISITATION</b>                        | <b>40,867.5</b>          | <b>22,481.9</b>  | <b>15,651.8</b>  | <b>1,179.4</b> | <b>1,449.1</b> | <b>105.2</b>  |
| <b>TOTAL VISITATION by PERCENTAGE</b>          | <b>100.0%</b>            | <b>55.0%</b>   | <b>38.3%</b>     | <b>2.9%</b>    | <b>3.5%</b>    | <b>0.3%</b>   |

**NOTES:**

All visits are listed in units of 1,000.

Local visits are defined as visits to a park by visitors who reside in that park agency's jurisdiction. Local visits for each agency are in bold and are highlighted.

Visitor origin data is from the *Metropolitan Council Regional Parks and Trails Survey 2008*. Percentages were adjusted to disregard "unknown" visitor origin and therefore may differ slightly from the survey report