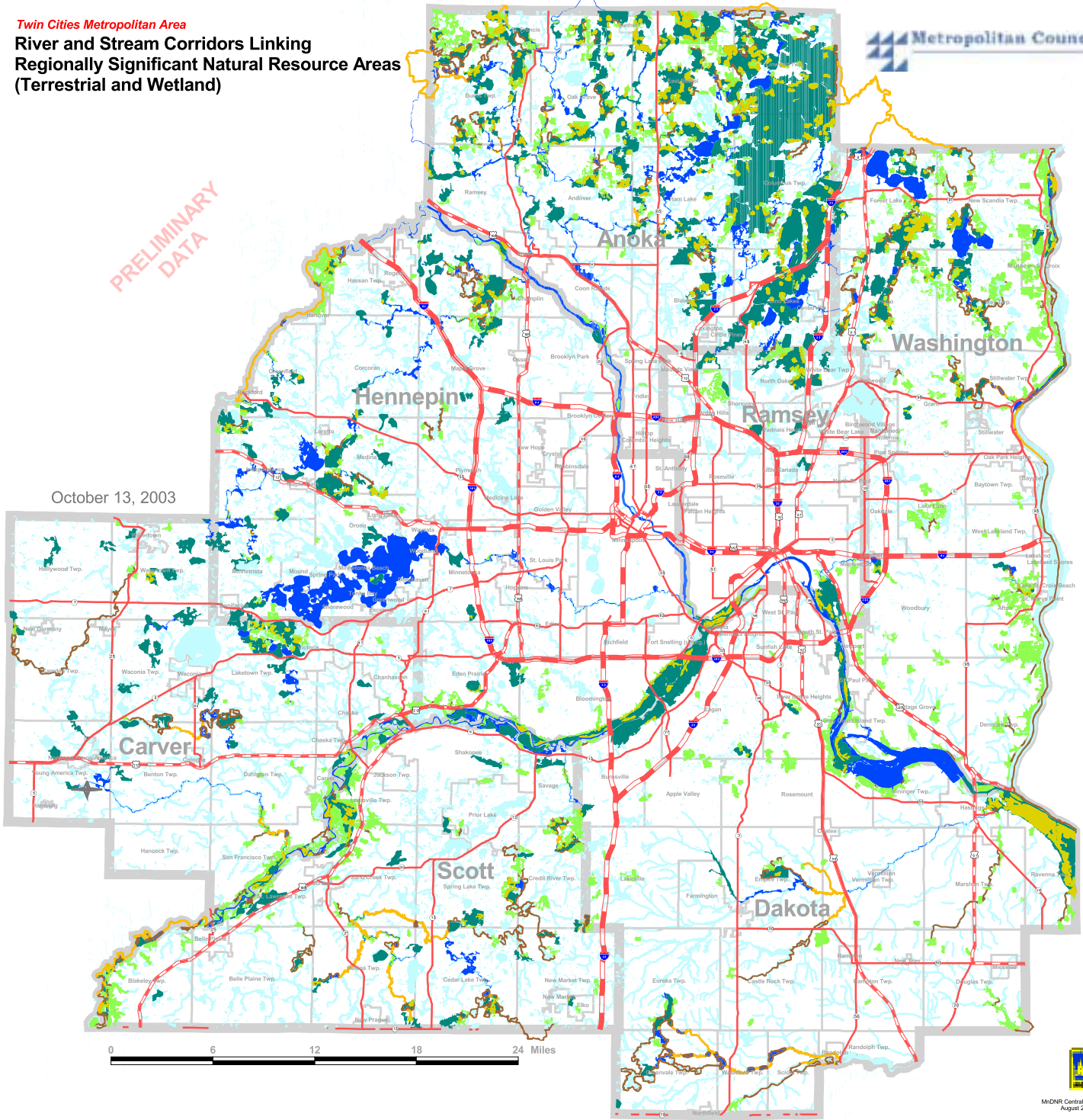


**River and Stream Corridors Linking Regionally Significant Natural Resource Areas (Terrestrial and Wetland)**

PRELIMINARY DATA

October 13, 2003



- River and Stream Corridors**
- Terrestrial Routes
  - Aquatic Routes
  - Sections where routes coincide
- Regionally Significant Natural Resource Areas (RSNRAs)**
- Terrestrial RSNRA
  - Wetland RSNRA
  - Considered as Both Terrestrial and Wetland RSNRA
- Open Water Features (including wetlands)**
- Open Water Features (including wetlands)
- Transportation**
- Interstate Highway
  - Federal Trunk Highway
  - State Trunk Highway
- Boundaries**
- Municipal/Township Boundary
  - County Boundary

**Regionally Significant Natural Resource Areas (RSNRAs)**

The Regionally Significant Natural Resource Areas (RSNRA) are derived from an ecological/GIS modeling process. These areas must meet specific criteria that were established to qualify as regionally significant (e.g. size, shape, connectivity, adjacent land use).

**River and Stream Corridors**

The River and Stream Corridors are shortest-distance paths in and along rivers, streams, lakes, and wetlands that connect at least two Regionally Significant Natural Resource Areas (RSNRA). The corridors consist of Aquatic Routes and Terrestrial Routes. The Aquatic Routes link wetland derived RSNRAs using any open water (streams, rivers, etc.). The Terrestrial Routes link upland derived RSNRAs using natural/semi-natural vegetation cover along the banks and shores of open water.

Copyright, 2002, MnDNR

The data for the modeling process was compiled from several different sources and its completeness or total accuracy cannot be guaranteed. The lack of data for any geographic area shall not be construed to mean that no significant natural features are present. In addition, there may be inaccuracies in the data, of which MnDNR is not aware and will not be held responsible. The data and products have not been ground truthed.



MnDNR Central Region  
August 21, 2002