



Metropolitan Area Water Supply Advisory Committee

Planning Activity Update

May 24, 2007

Presented by Chris Elvrum
Manager, Water Supply Planning



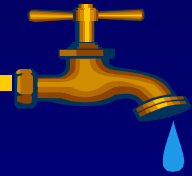
Metropolitan Area Water Supply Advisory Committee Schedule



- March 1, 2007: Phase II activities, drought response, Mississippi River Headwaters, East Metro water quality, water conservation
- May 24, 2007: Phase II activities, EQB reports, water availability analysis, water re-use
- August 23, 2007: State drought response plan, safety/security, conservation toolbox, climate change, City of Ramsey surface water supply
- September 27, 2007: Tentative date
- October 25, 2007: Tentative date, stakeholder workshops
- November 15, 2007: Stakeholder workshop results, cost effectiveness evaluation methods, demand scenarios

Note: Schedule and topics subject to change

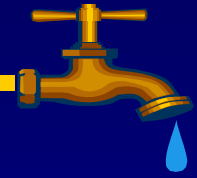
Metropolitan Area Water Supply Advisory Committee Schedule cont.



January/February 2008:	Scenario results/supply options spill response
March/April 2008:	Supply options, data needs/collection process and funding
May/June 2008:	Stakeholder workshops /workshop results, Master Plan scope, funding options
July/August 2008:	Master Plan draft
September/October 2008:	Master Plan review
November 2008:	Master Plan final review

Note: Schedule and topics subject to change

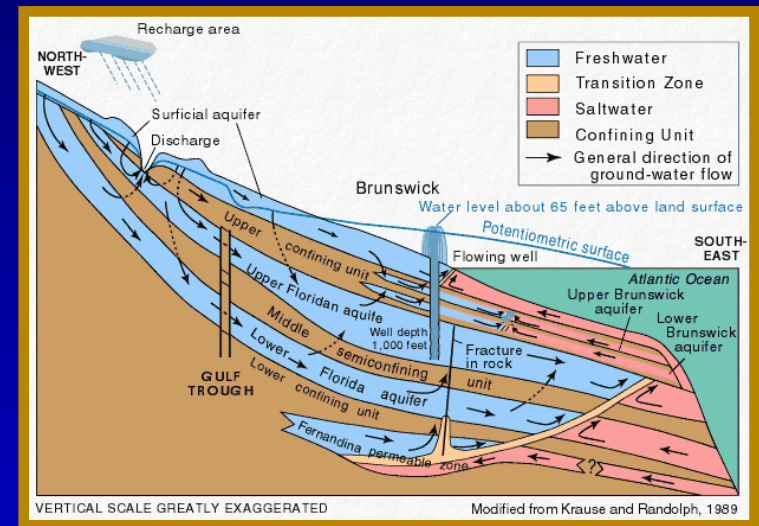
Resource Evaluation/ Data Collection and Analysis



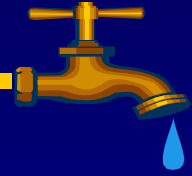
- Conduct resource availability analysis (Consultant)
- Improve data collection and sharing
- Organize a metro-wide mass water level measurement (USGS)
- Hydrogeologic mapping (MGS)

Work Group:

Met Council, DNR, PCA, MDH, Consultants, Dakota and Washington Counties, Minnesota Geological Survey, US Geological Survey



Drought Response/ Mississippi River



- **Revise and update state drought response plan (triggers and responses)**
- **Clarify issues surrounding emergency releases from Mississippi River Headwaters Reservoirs**

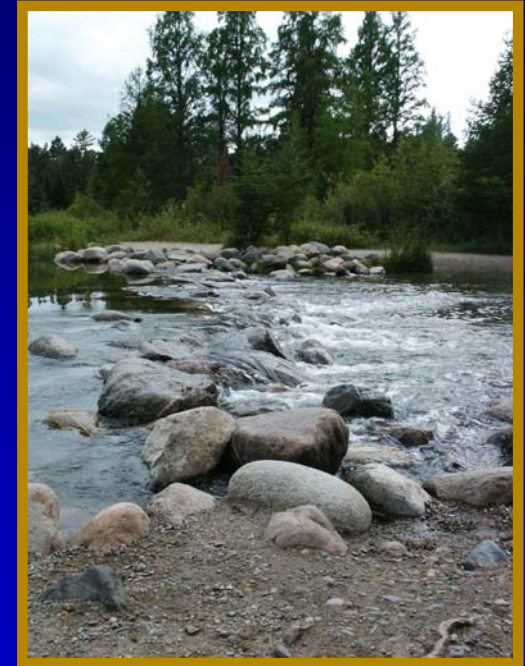


Photo courtesy of Visit Bemidji

Work Group:

Met Council, DNR, US Army Corps of Engineers, St. Paul Regional Water Services, Minneapolis Water Utility, Joint Waters Commission

U.S. Drought Monitor

Minnesota

May 15, 2007

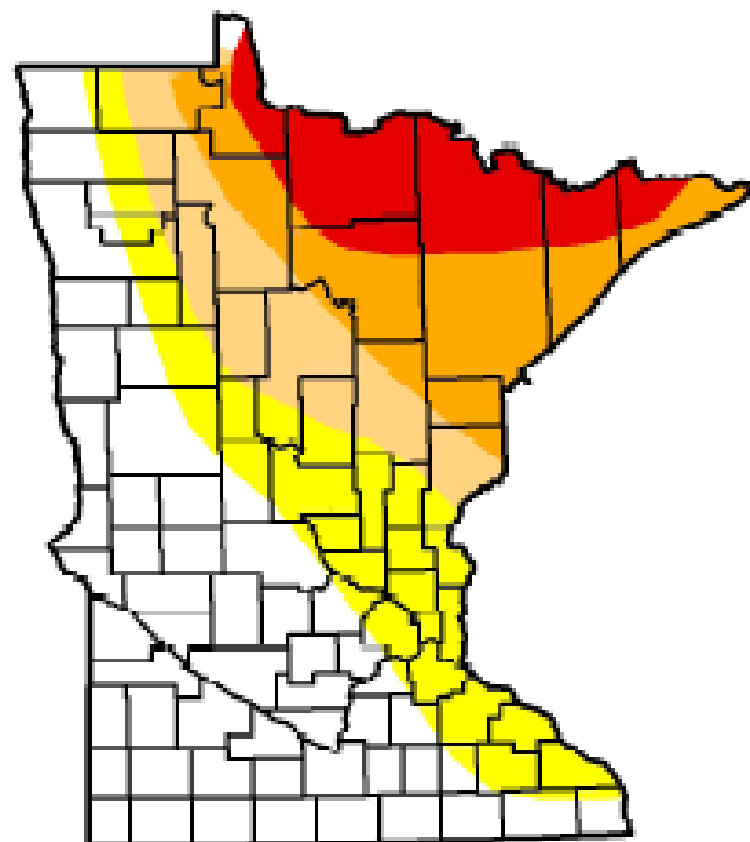
Valid 7 a.m. EST

Drought Conditions (Percent Area)

	None	D0-D4	D1-D4	D2-D4	D3-D4	D4
Current	43.4	56.6	37.8	25.7	11.4	0.0
Last Week (05/08/2007 map)	54.9	45.1	35.9	22.0	11.1	0.0
3 Months Ago (02/20/2007 map)	3.9	96.1	58.8	51.4	40.9	0.0
Start of Calendar Year (01/01/2007 map)	4.0	96.0	58.8	48.1	40.9	0.0
Start of Water Year (10/01/2006 map)	38.9	61.1	56.3	48.1	42.2	0.0
One Year Ago (05/16/2006 map)	100.0	0.0	0.0	0.0	0.0	0.0

Intensity:

- D0 Abnormally Dry
- D1 Drought - Moderate
- D2 Drought - Severe
- D3 Drought - Extreme
- D4 Drought - Exceptional



The Drought Monitor focuses on broad-scale conditions. Local conditions may vary. See accompanying text summary for forecast statements.



Released Thursday, May 17, 2007

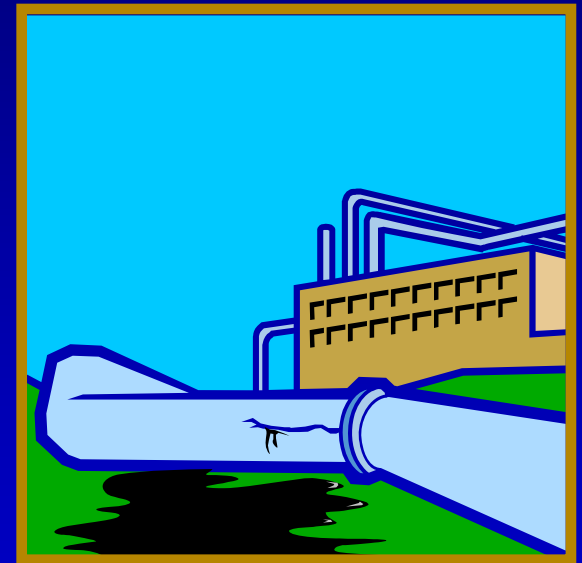
Author: Mark Svoboda, National Drought Mitigation Center

<http://drought.unl.edu/dm>

Mississippi Spill Response



- Assess training and spill response equipment needs
- Evaluate time of travel tools



Work Group:

Mississippi River Defense Network – Met Council, PCA, MDH, DHSEM, St. Paul RWS, St. Cloud, Minneapolis, Hennepin County, Benton County, Xcel Energy

Safety and Security



- Collect and disseminate information on current programs
- Assess the need/benefit for regional programs



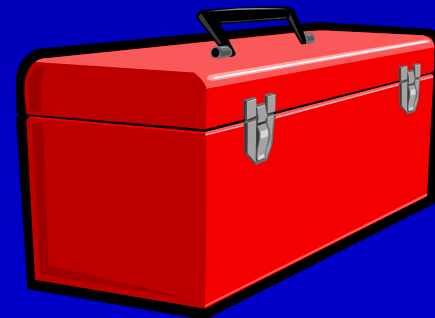
Work Group:

Met Council, MDH, DHSEM, AWWA and SUSA (water utilities),
Hennepin County

Water Conservation Toolbox



- Solicit water supplier/public feedback – July
- Advisory Committee - August
- Update regularly



Future Work Groups/Outreach



- **Funding**
- **Supply alternatives/master plan development**
- **Regional stakeholder workshops fall '07
spring '08**

