



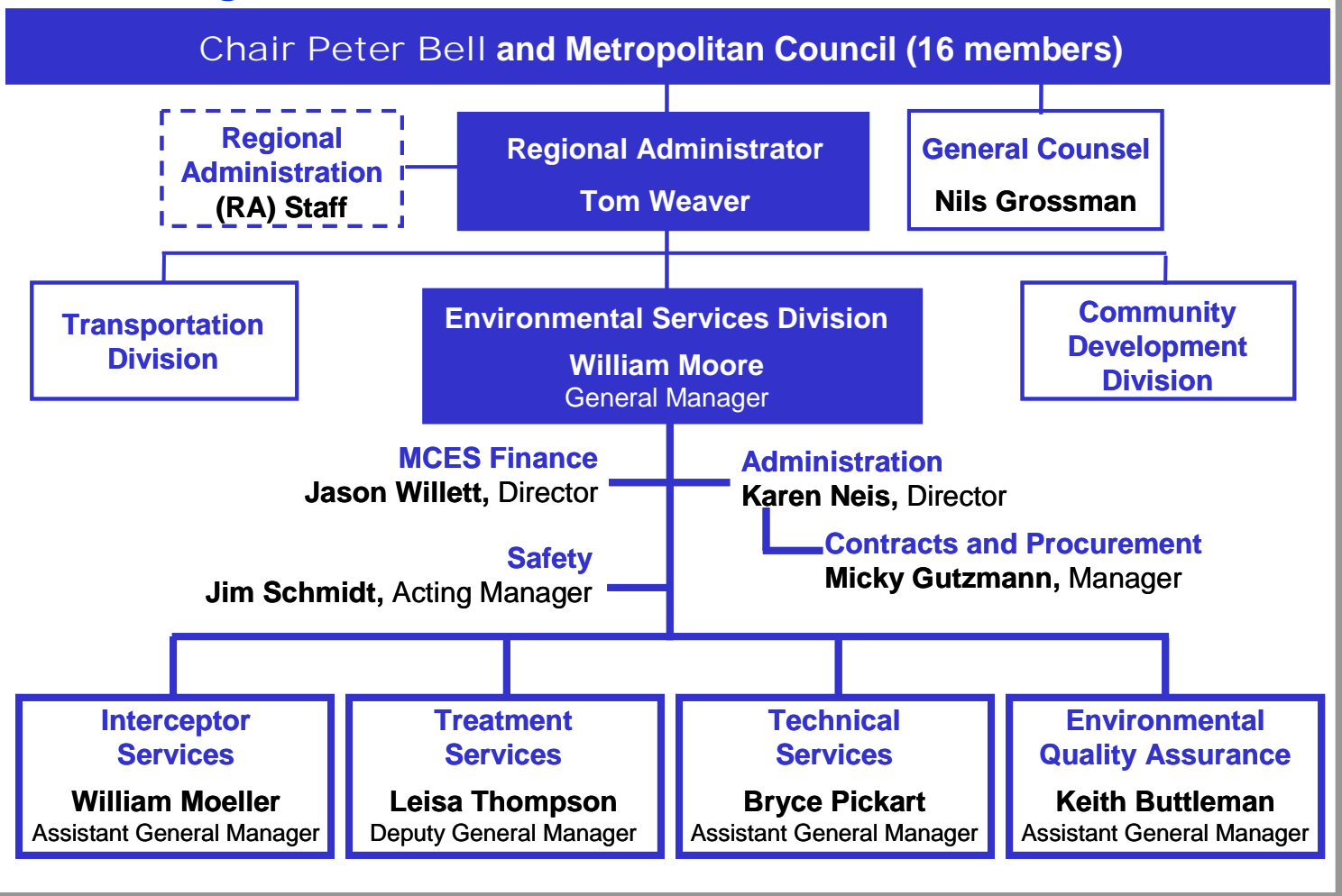
A Profile of Metropolitan Council Environmental Services

Metropolitan Council Environmental Services (MCES) is an operating division of the Metropolitan Council, a regional public agency working for the seven-county metropolitan area. MCES provides cost-effective wastewater service to 104 communities, which comprise 90 percent of the area's population.

Metropolitan Council Environmental Services:

- Operates and maintains approximately 600 miles of regional sewers that collect wastewater from 5,000 miles of sewers owned by 104 communities,
- Has the capacity to treat 372 million gallons of wastewater daily at eight regional treatment plants,
- Continues to achieve near-perfect compliance with federal and state clean water standards,
- Establishes user fees that pay 100 percent of wastewater operations and debt service costs,
- Maintains wastewater service rates consistently below the national average,
- Works with approximately 800 industrial clients to substantially reduce the amount of pollution entering our wastewater collection system,
- Provides water resources monitoring and analysis for the region, and
- Partners with numerous public, private and nonprofit groups committed to a clean environment.

MCES Organization



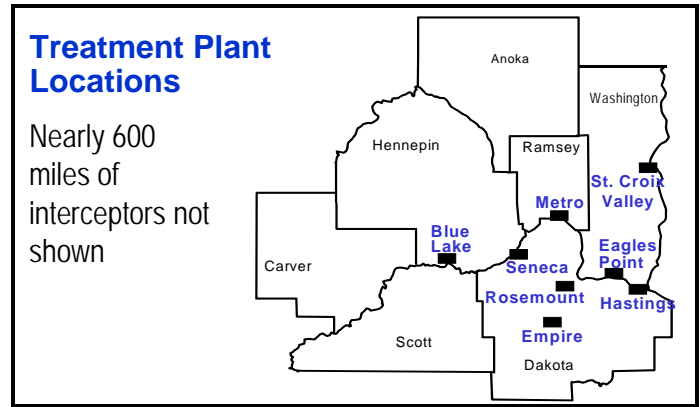
Mission: The mission of Metropolitan Council Environmental Services (MCES) is to provide wastewater services that protect the public health and environment while supporting regional growth.

Services provided by MCES ensure that:

- Sufficient sewer capacity exists to serve planned development,
- Sufficient capital investments are made to preserve water quality in the region,
- Wastewater collection and treatment services are provided in a cost- and quality-competitive manner, and
- Local plans provide for adequate water supply and nonpoint pollution prevention in the region.

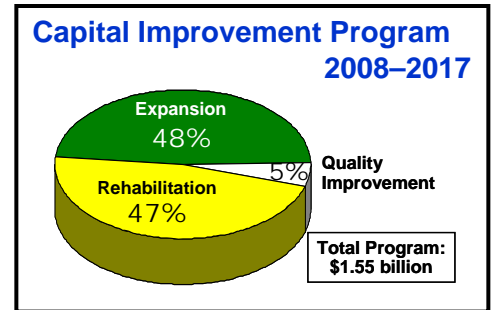
Treatment Plant Operations

MCES's plants perform at high levels of compliance with clean water discharge permits, and in 2007 all eight received performance awards from NACWA; Seneca, St. Croix Valley and Hastings received Platinum Awards for six, 15 and 16 consecutive years respectively of perfect compliance. Wastewater was treated to 99.9% compliance.



Capital Projects

The MCES capital improvement program maintains and improves the quality of the regional wastewater system infrastructure, supports area growth, and meets regulatory obligations. Major projects include the Empire, Blue Lake and Seneca Plant expansions, a new Hastings Area Plant, and multiple interceptor sewer capacity projects.



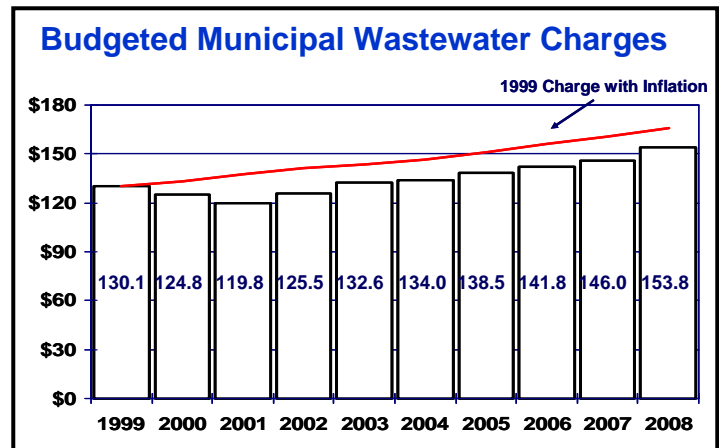
Water Resources

MCES provides water quality monitoring and analysis on the region's lakes and rivers; partners with public, private and nonprofit groups to improve water quality; assists with watershed planning and management; plays an active role in the Legislature-approved Water Supply Advisory Committee. Work is guided by the *2030 Water Resources Management Policy Plan*.



Finance

MCES's financial planning and management keep the organization's rates competitive, while continuing to win awards for superior operation. MCES's wastewater rates continue to be one of the lowest of similar-sized wastewater utilities across the country (NACWA National Survey).



Customer Service

MCES works with and for the citizens of the region in a number of ways, which include partnering on environmental improvement efforts; providing educational programs, surveys and newsletters; conducting meetings and forums; and addressing process-related and industrial odor control issues.



Metropolitan Council Members

Chair:

Peter Bell

Council Members:

Roger Scherer	District 1	Natalie Steffen	District 9
Tony Pistilli	District 2	Kris Sanda	District 10
Mary H. Smith	District 3	Georgeanne Hilker	District 11
Craig Peterson	District 4	Sherry Broecker	District 12
Vacant	District 5	Richard Aguilar	District 13
Peggy Leppik	District 6	Kristin Sersland Beach	District 14
Annette Meeks	District 7	Daniel Wolter	District 15
Lynette Wittsack	District 8	Brian McDaniel	District 16

Council Regional Administrator:

Thomas Weaver

The MCES Management Team
is available to answer your questions and address your needs.

Bill Moore, MCES General Manager

(651) 602-1162 or bill.moore@metc.state.mn.us

Leisa Thompson, Deputy General Manager, Treatment Services

(651) 602-8101 or leisa.thompson@metc.state.mn.us

Keith Buttleman, Assist. General Manager, Environmental Quality Assurance

(651) 602-1015 or keith.buttleman@metc.state.mn.us

Bryce Pickart, Assistant General Manager, Technical Services

(651) 602-1091 or bryce.pickart@metc.state.mn.us

Bill Moeller, Assistant General Manager, Interceptor Services

(651) 602-4504 or bill.moeller@metc.state.mn.us

Karen Neis, Director, Environmental Services Administration

(651) 602-1012 or karen.neis@metc.state.mn.us

Jason Willett, Director, Environmental Services Finance

(651) 602-1196 or jason.willett@metc.state.mn.us

Visit our website to learn more about the Metropolitan Council and MCES.
www.metrocouncil.org/water

Environmental Services



April 2008