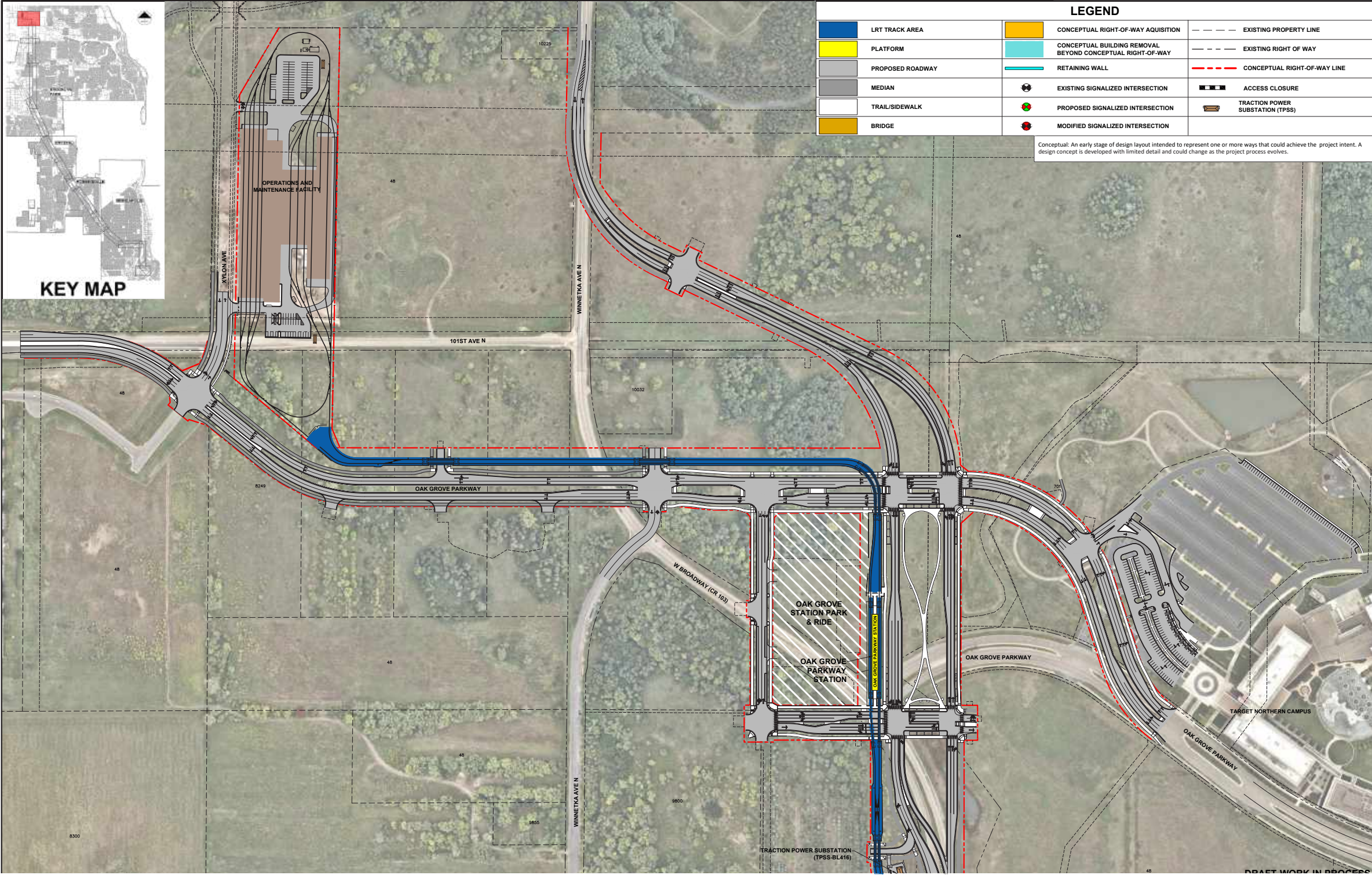


# BROOKLYN PARK

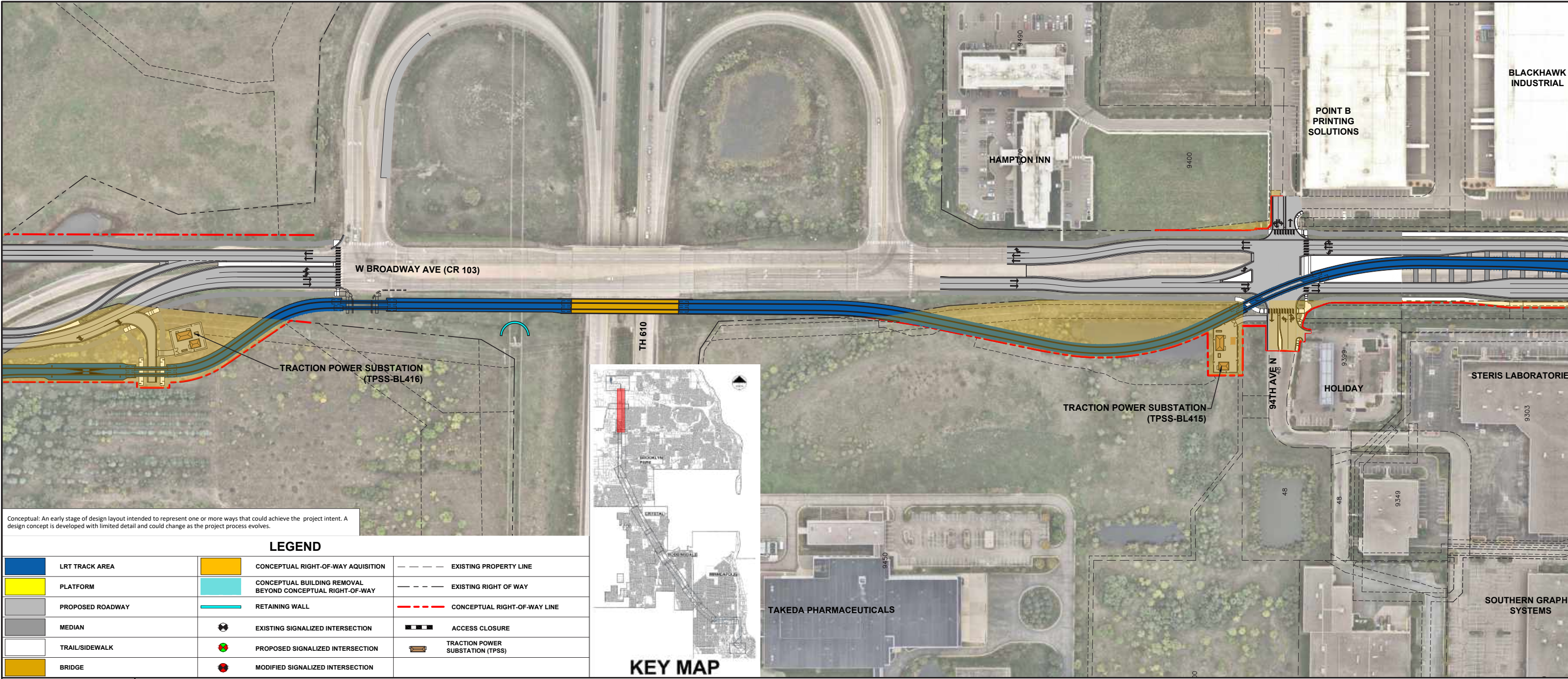
## OAK GROVE STATION AND PARK & RIDE





# BROOKLYN PARK

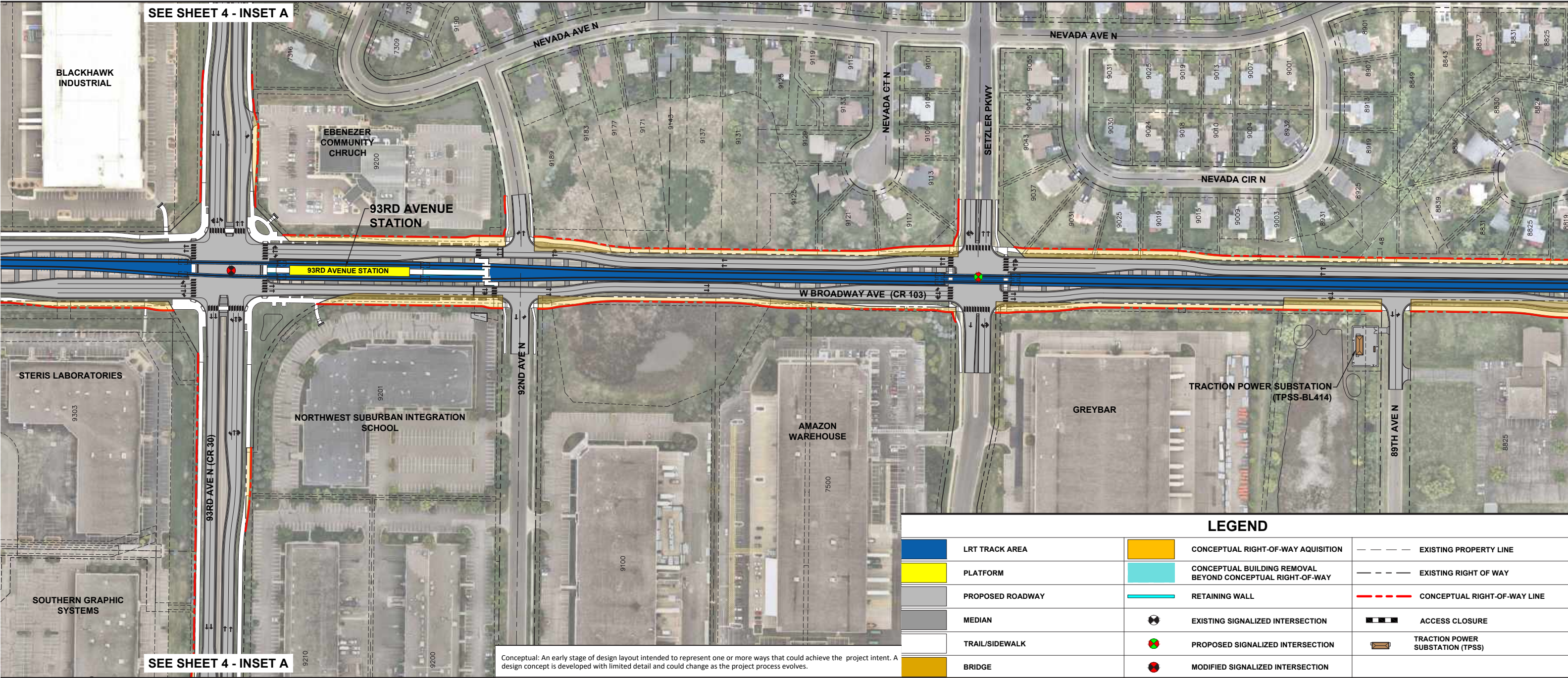
## HWY 610





# BROOKLYN PARK

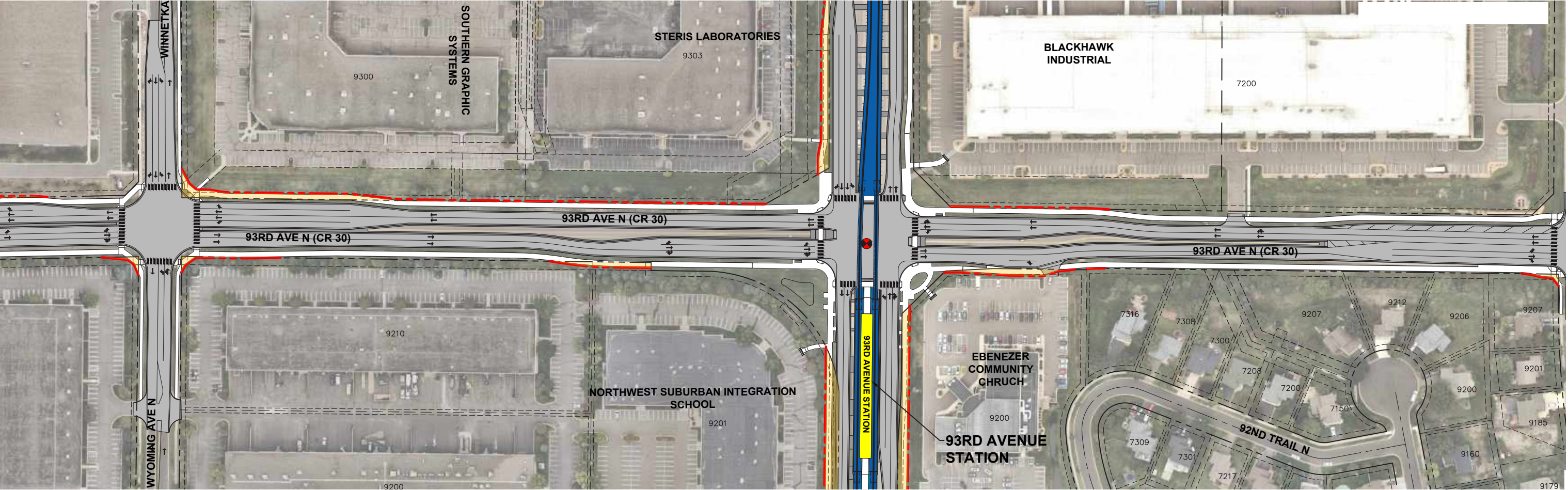
## 93RD AVENUE STATION



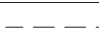

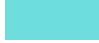
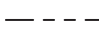








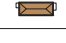






# BROOKLYN PARK

## 93RD AVENUE STATION



LEGEND					
	LRT TRACK AREA		CONCEPTUAL RIGHT-OF-WAY AQUISITION		EXISTING PROPERTY LINE
	PLATFORM		CONCEPTUAL BUILDING REMOVAL BEYOND CONCEPTUAL RIGHT-OF-WAY		EXISTING RIGHT OF WAY
	PROPOSED ROADWAY		RETAINING WALL		CONCEPTUAL RIGHT-OF-WAY LINE
	MEDIAN		EXISTING SIGNALIZED INTERSECTION		ACCESS CLOSURE
	TRAIL/SIDEWALK		PROPOSED SIGNALIZED INTERSECTION		TRACTION POWER SUBSTATION (TPSS)
	BRIDGE		MODIFIED SIGNALIZED INTERSECTION		

Conceptual: An early stage of design layout intended to represent one or more ways that could achieve the project intent. A design concept is developed with limited detail and could change as the project process evolves.

Conceptual: An early stage of design layout intended to represent one or more ways that could achieve the project intent. A design concept is developed with limited detail and could change as the project process evolves.





# BROOKLYN PARK

## 85TH AVENUE TO 89TH AVENUE







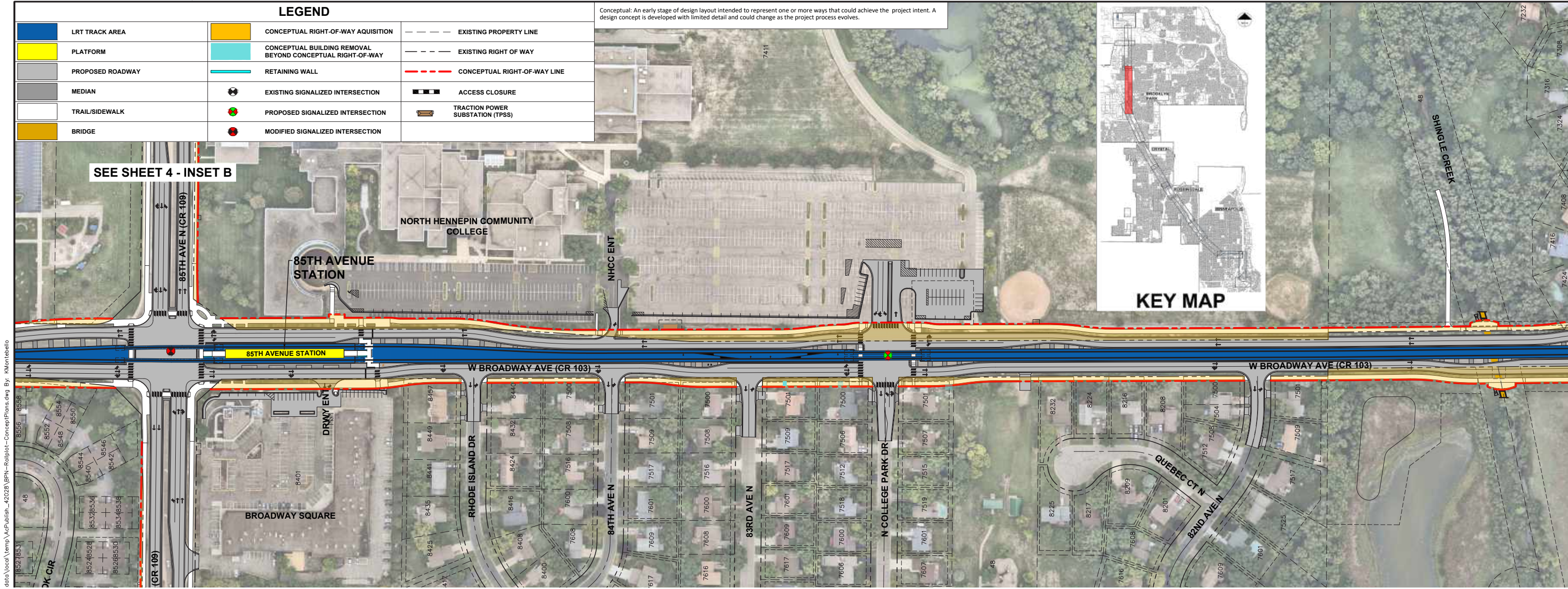
Conceptual: An early stage of design layout intended to represent one or more ways that could achieve the project intent. A design concept is developed with limited detail and could change as the project process evolves.





# BROOKLYN PARK

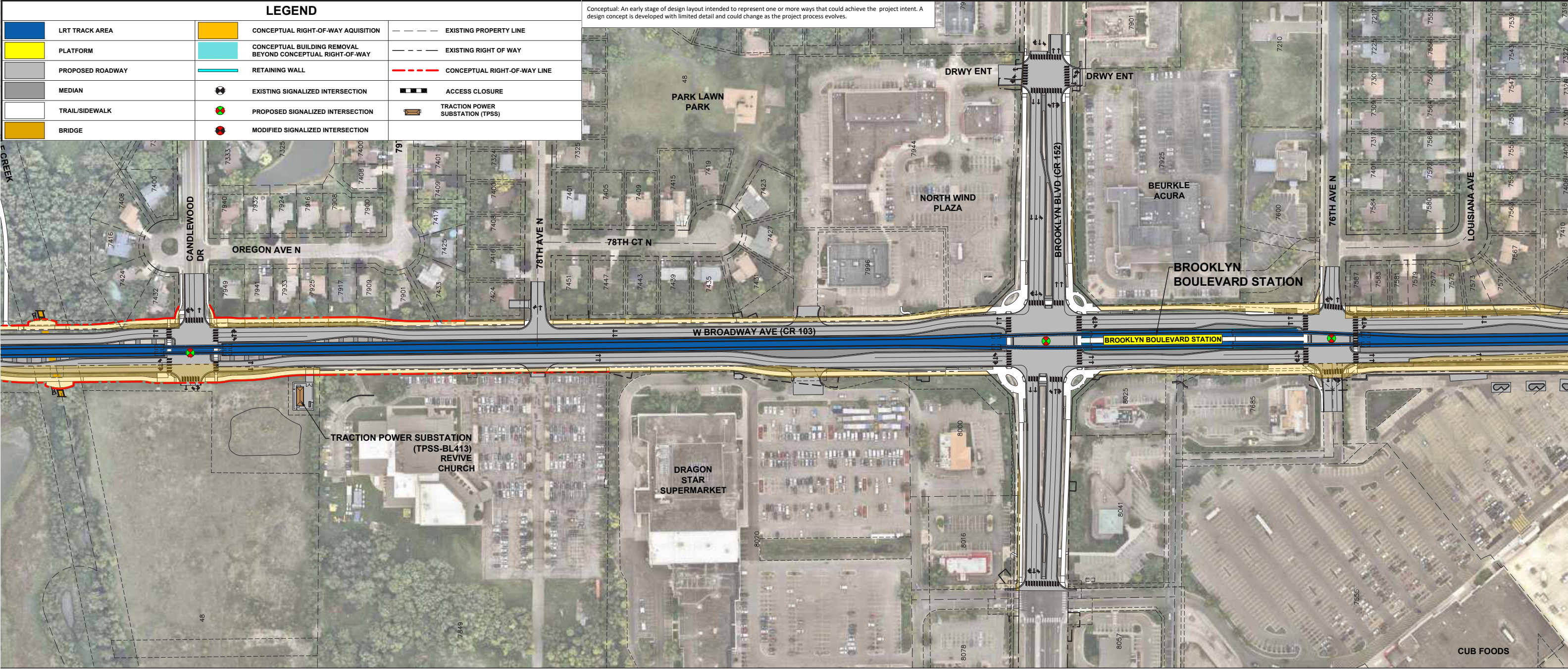
## 85TH AVENUE STATION





# BROOKLYN PARK

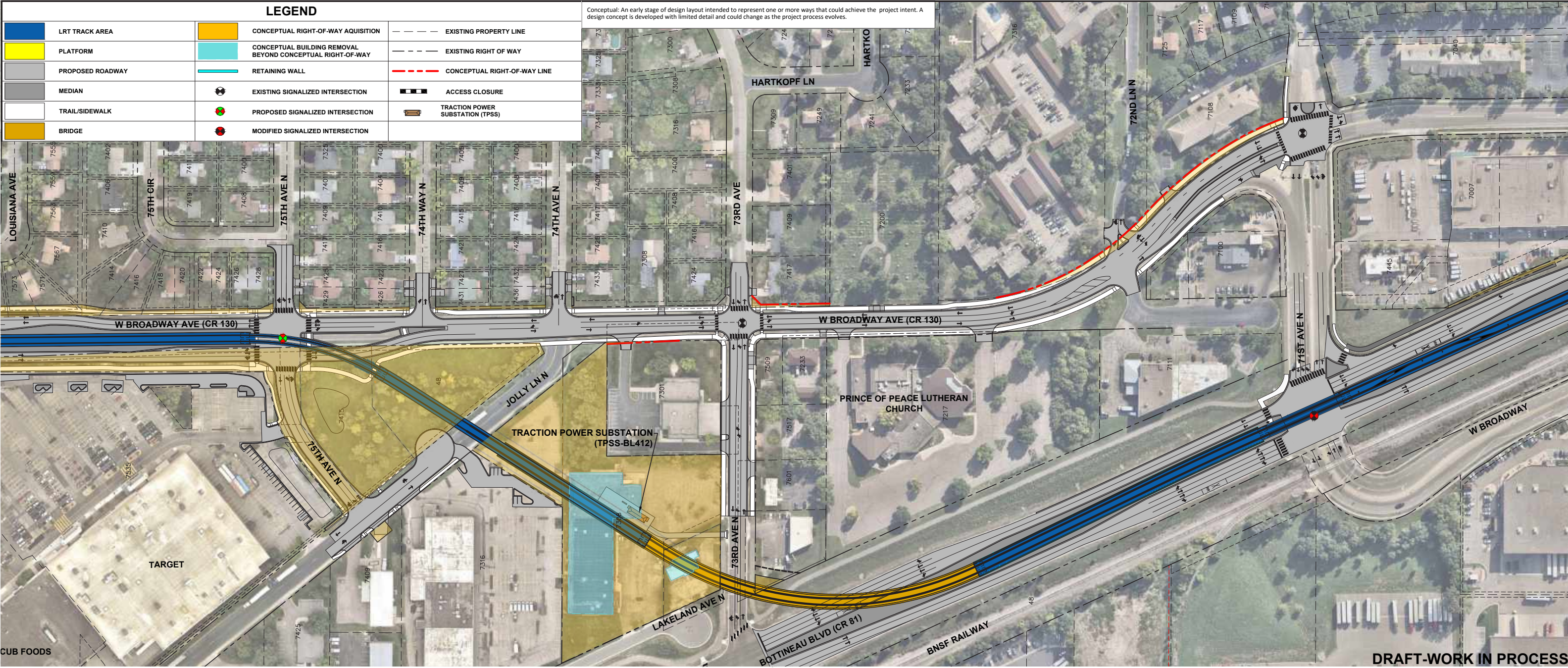
## BROOKLYN BOULEVARD STATION





# BROOKLYN PARK

## WEST BROADWAY AVENUE TO BOTTINEAU BLVD



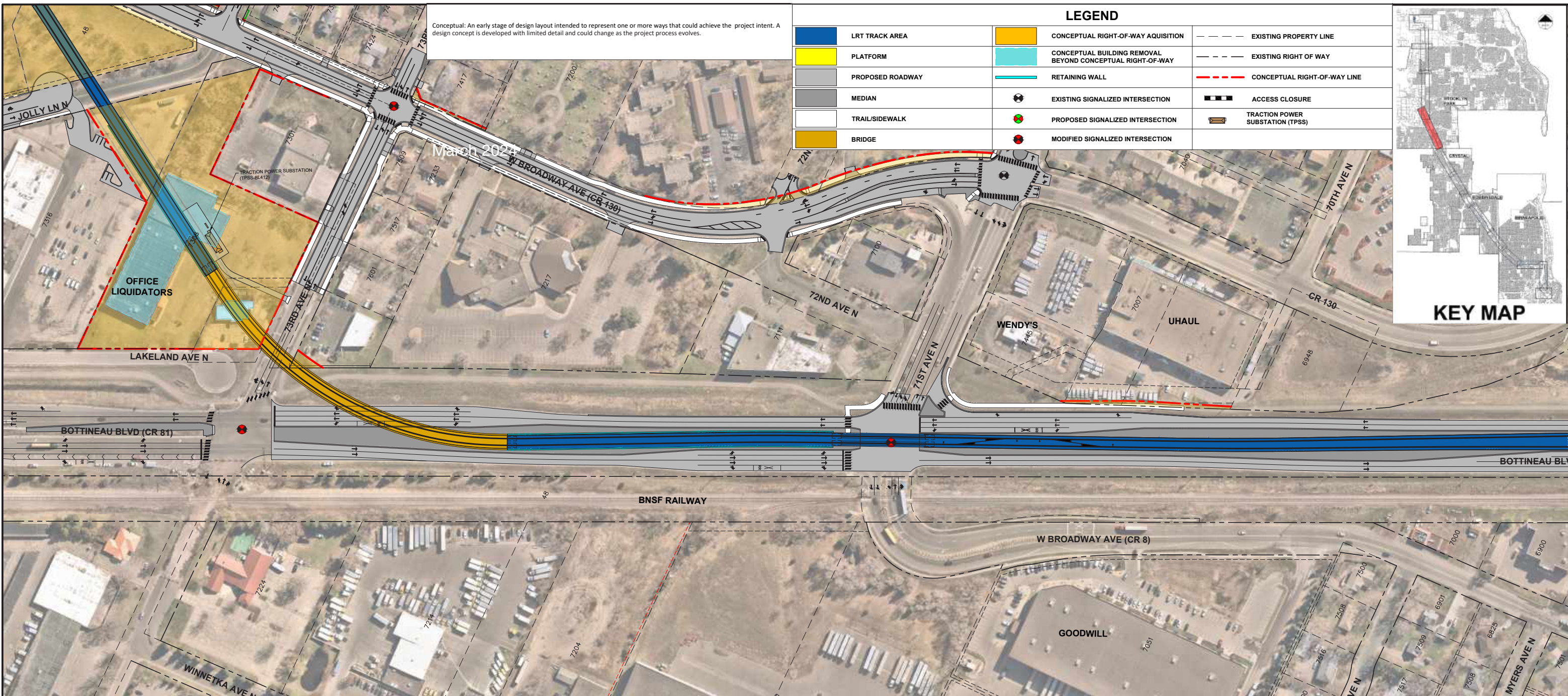
DRAFT-WORK IN PROCESS





# BROOKLYN PARK

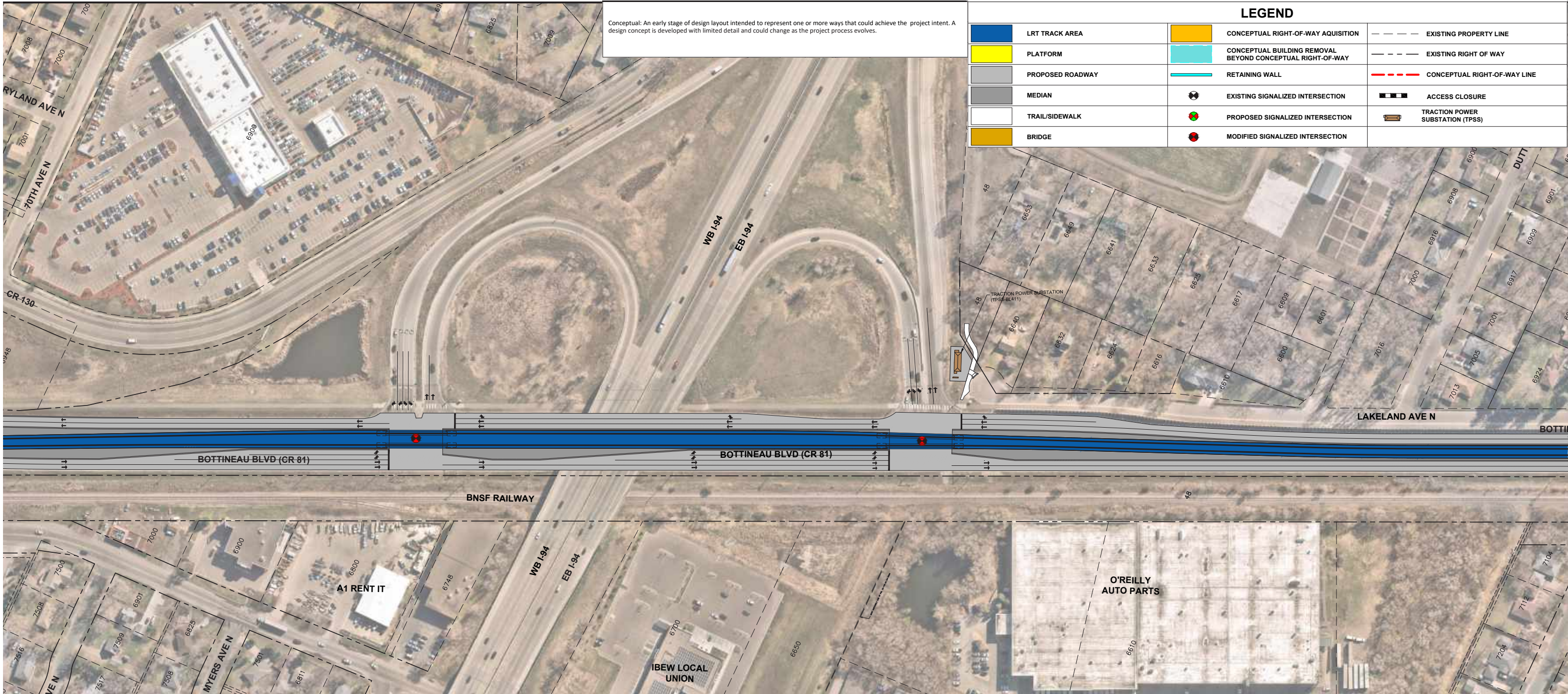
## 71ST AVENUE AND BOTTINEAU BLVD





# BROOKLYN PARK

## I-94





# BROOKLYN PARK

## 63RD AVENUE STATION

