



On-Course

COMPREHENSIVE PLANNING

Metropolitan Land Planning Act (MLPA)

■ Legislative **Findings** & Purpose

- interdependent communities
- individual communities impact region's infrastructure
- growth creates need for public services
- danger of air and water pollution
- danger of water supply shortages

Metropolitan Land Planning Act (MLPA)

■ Legislative Findings & **Purpose**

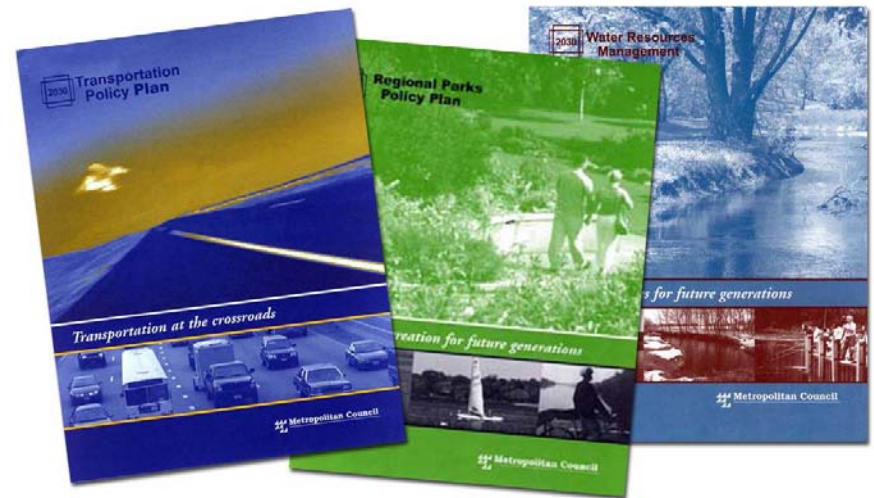
- Protect public health, safety and welfare
- Ensure coordinated, orderly & economic development

Metropolitan Land Planning Act (MLPA)

- M.S. 473.851 to 473.871
- Metropolitan Council's responsibilities
 - Regional plans
 - Process
- Local comprehensive planning
 - Content requirements 473.859
 - Process

Regional Plans

- 2030 Regional Development Framework
- System Plans
 - Transportation
 - Water Resources
 - Parks & Open Space



Local Planning Handbook

- Help cities prepare for comprehensive plan updates due to Council in 2008
 - Sent system statements
 - Created web-based [Local Planning Handbook](#)



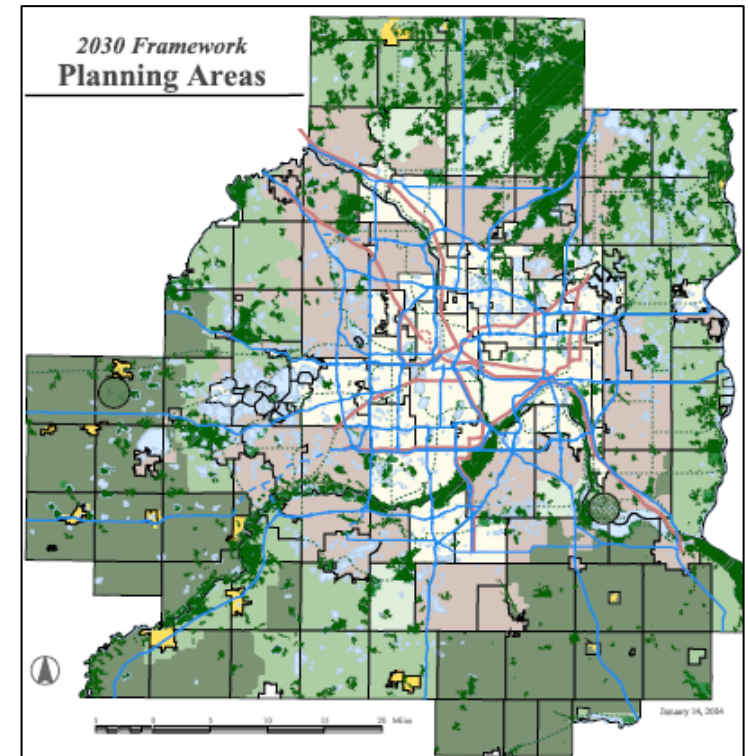
Content Requirements

MS 473.859

- Subd. 1 Foundation
- Subd. 2 Land Use
- Subd. 3 Public facilities
- Subd. 4 Implementation
- Subd. 5 Urbanization & Redevelopment
(Optional)

Content Requirements: Foundation

- Policies & objectives
- Planning area designation for the municipality
- Forecasts for population, household numbers, & employment



Content Requirements: Land Use

- Existing land & water
- Future land use & staging to accommodate forecasted growth
 - Location, intensity & extent
- Housing plan
- Special resources: Solar access, historic preservation, aggregate & Critical Area



Requirements: Public Facilities - Transportation

- Traffic Analysis Zones
- Roads & Highways
- Aviation
- Transit
- Bicycles & Pedestrians



Requirements: Public Facilities – Water Resources

- Wastewater
 - Sewers
 - Septic systems
- Surface water
- Water supply



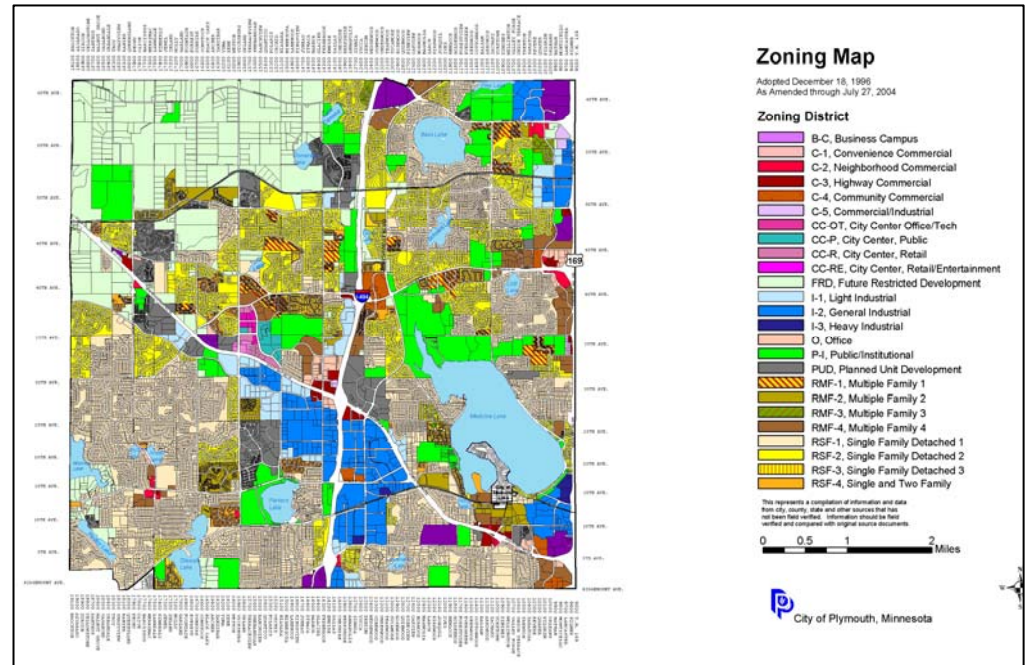
Requirements: Public Facilities – Parks

- Regional Parks
- Regional Trails
- Local parks & open spaces



Requirements: Implementation

- Official Controls
 - Zoning
 - Subdivision
- Capital Improvement Programs
- Housing Implementation Program



Sector Reps = Comp planning contacts

- Patrick Boylan 651-602-1438
- Ann Braden 651-602-1705
- Tom Caswell 651-602-1319
- Robin Caufman 651-602-1457
- Victoria Dupre 651-602-1621
- Denise Engen 651-602-1513
- Bob Mazanac 651-602-1330
- Jim Uttley 651-602-1361