



*On-Course*

The *Bicycle and Pedestrian*  
**Element**  
of your comprehensive plan

**James Andrew**

# Planning for Bicyclists and Pedestrians



Photographs from [www.pedbikeimages.org](http://www.pedbikeimages.org). photos by Dan Burden except where otherwise noted.

# Bicycle and Pedestrian Themes

- Everyone is a pedestrian
- A bicycle is a viable transportation alternative for many trips
- Quality of Life and Physical Health
- Community Demand



# Bicycle and Pedestrian Policies in the *TPP*

## **Policy 15:** Develop and Maintain Efficient Pedestrian and Bicycle Travel Systems –

- Safe
- high-quality,
- continuous
- barrier-free
- integral to the region's transportation system



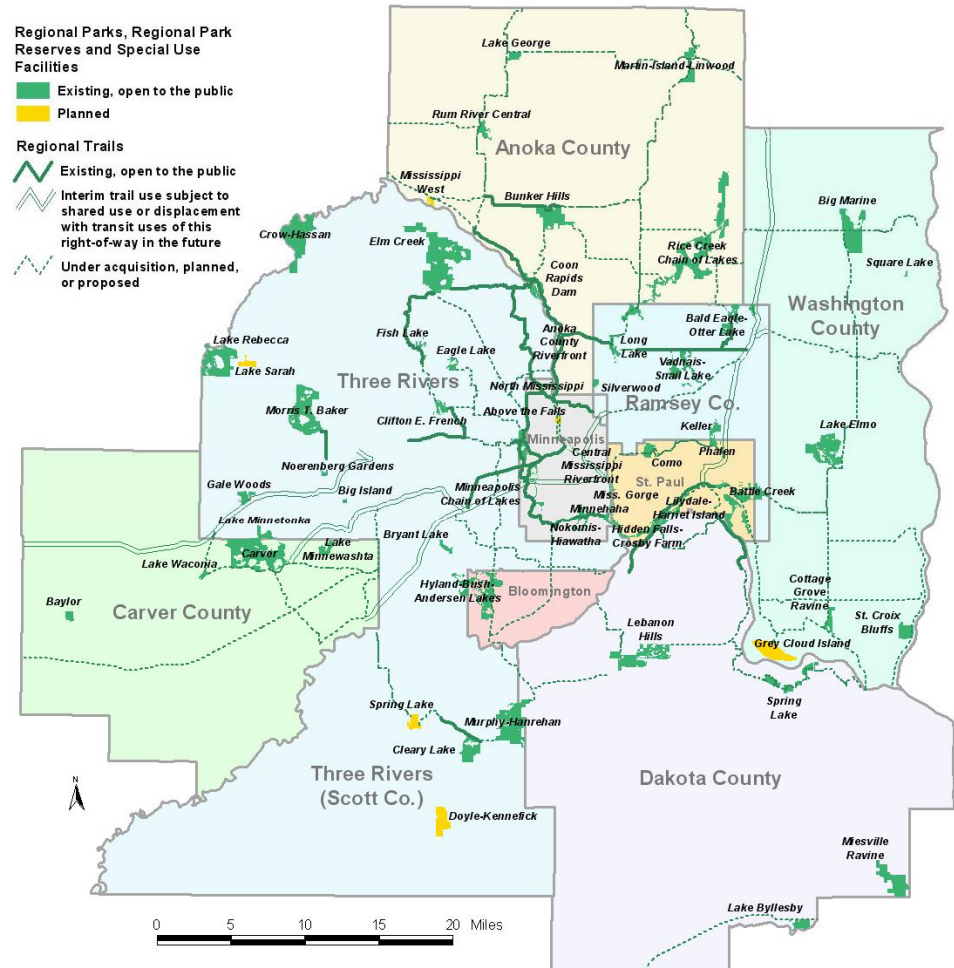
# Bicycles and Pedestrians in the *TPP*

- *TPP* does not include a system map
- Plan locally; trips are short
- *TPP* encourages municipalities to plan for these modes



# Regional Trail System

- Goal: Comprehensive regional trail system
- Identify alignment of regional trails, location of proposed trails
- Also eligible for transportation funding



# Comprehensive Plan Requirements for Federal Funding

- Describes policies & plans for bicycle and pedestrian systems and programs
- Map shows on- and off-road bikeways
- Describes bike and pedestrian access to transit corridors and facilities



# Bicycle & Pedestrian Elements

- Promote safety of pedestrians and bicyclists
- Provide connections to adjacent jurisdictions
- Fill gaps and remove barriers in system
- Serve travel as well as leisure
- Provide facilities to and within high activity nodes (commercial and transit centers)
- Include education programs for motorists, pedestrians and bicyclists

# Pedestrian Plan

## ■ Sidewalks

- ADA
- Maintenance/Snow

## ■ Transit Planning Coordination

- Safety
- Accessibility to destinations

## ■ Roadway projects

- Evaluation criteria
- Landscaping/crossing treatments



# Bicycle Plan

- Coordinate planning among local jurisdictions
- Counties
  - cross-community facilities
  - connections between cities
  - coordinated with park trails
- Transit planning coordination
- Highway and transit project criteria include bicycles



# Funding Priorities in *TPP*

- Funding priority given to projects that
  - serve transportation need
  - serve the largest number of users
  - support compact mixed-use development
  - provide safety and security for users
  - Integrate and connect with other modes
  - fill gaps in regional system
  - are cost-effective

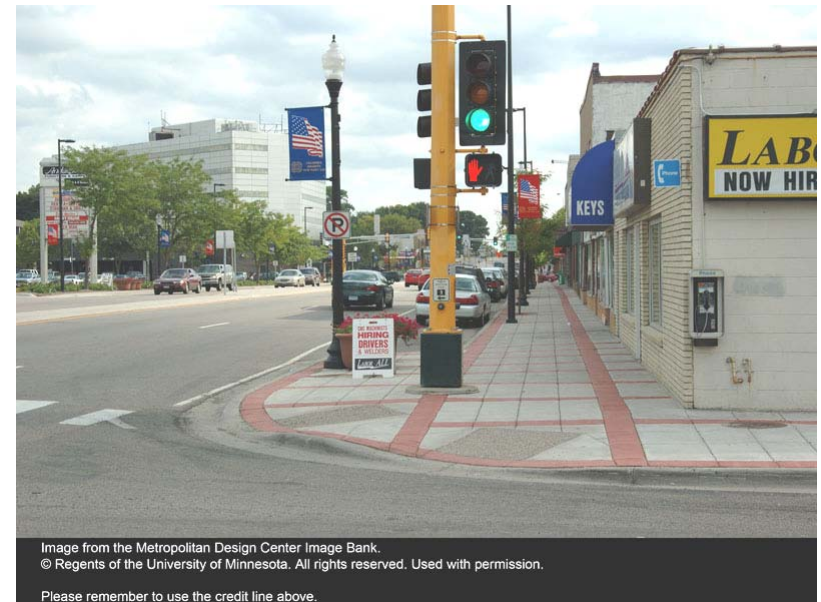


Image from the Metropolitan Design Center Image Bank.  
© Regents of the University of Minnesota. All rights reserved. Used with permission.

Please remember to use the credit line above.

# How to get funding

- Metropolitan Council Biennial Regional Solicitation (Summer 2007)
  - Transportation Enhancements
  - Surface Transportation Program
    - Bike/Walk category
    - Integrate into road projects

# Other funding sources



- Safe Routes to School - *Mn/DOT*  
<http://www.dot.state.mn.us/saferoutes/index.html>
- Non-motorized - Transportation Pilot Program - *TLC*  
<http://www.tlcmnnesota.org/>
- Regional Park Funds - *Metropolitan Council*  
[arne.stefferud@metc.state.mn.us](mailto:arne.stefferud@metc.state.mn.us)
- Trail funds – *DNR*  
<http://www.dnr.state.mn.us/grants/recreation/index.html>

# Other funding sources, cont.



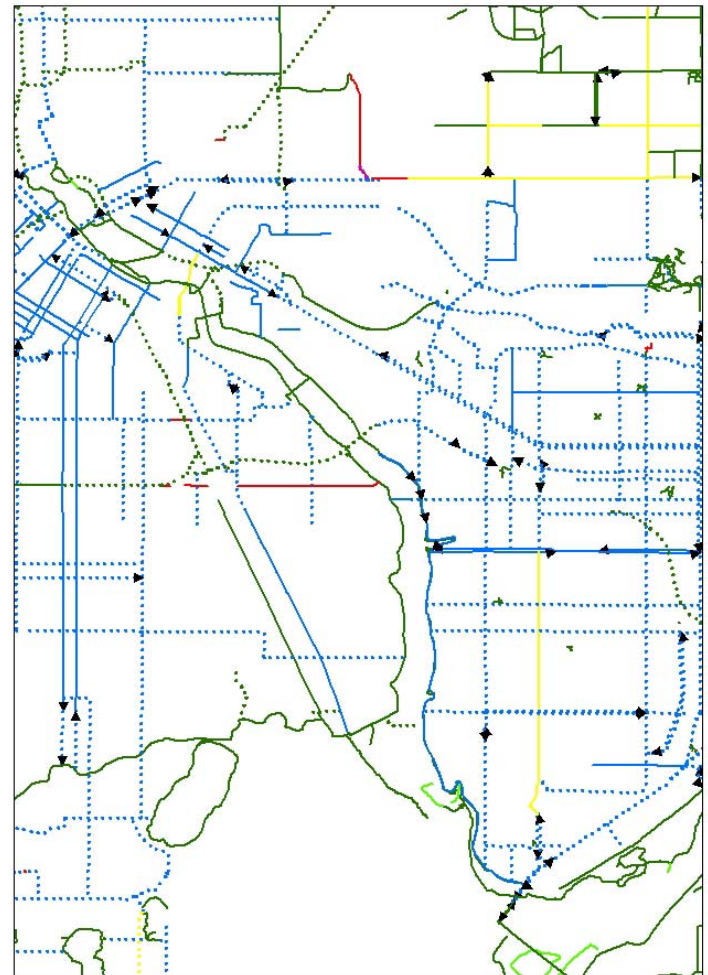
- **Blue Cross Blue Shield Grant Program for Active Communities:**

[http://www.preventionminnesota.com/community\\_funding.cfm](http://www.preventionminnesota.com/community_funding.cfm)

- RFP for planning for active communities – **due April 28.**
- Will provide capital funding in a future RFP

# Metropolitan Council Resources

- Regional map and inventory of on- and off-road bicycle facilities under development
  - base bicycle transportation system map
  - help with coordination between cities and counties and to close gaps in the system



# Other Planning Resources

- Bicycle and Pedestrian Information Center  
[www.pedbikeinfo.org](http://www.pedbikeinfo.org)
- National Center for Bicycling & Walking  
[www.bikewalk.org](http://www.bikewalk.org)
- Mn/DOT Bicycle Planning  
<http://www.dot.state.mn.us/sti/bike.html>
- Mn/DOT Pedestrian Planning  
<http://www.dot.state.mn.us/sti/peds.html>

# Contact Information

- James Andrew, Transportation Planner: 651.602.1721  
[james.andrew@metc.state.mn.us](mailto:james.andrew@metc.state.mn.us)
- Karen Lyons, Senior Planner: 651.602.1703  
[karen.lyons@metc.state.mn.us](mailto:karen.lyons@metc.state.mn.us)
- Darryl Anderson, Mn/DOT Bicycle Coordinator: 651.297.2136  
[darryl.anderson@dot.state.mn.us](mailto:darryl.anderson@dot.state.mn.us)
- Mary Jackson, Mn/DOT Bicycle Facilities Design: 651.282.5317  
[mary.jackson@dot.state.mn.us](mailto:mary.jackson@dot.state.mn.us)
- Kristie Billiar, Mn/DOT Ped/Safe Routes to School Coord: 651.296.5269  
[kristie.billiar@dot.state.mn.us](mailto:kristie.billiar@dot.state.mn.us)
- Kim Lockwood, DNR: 651.259.5621  
[kim.lockwood@dnr.state.mn.us](mailto:kim.lockwood@dnr.state.mn.us)
- Arne Stefferud, Metropolitan Council Regional Parks: 651.602.1360  
[arne.stefferud@metc.state.mn.us](mailto:arne.stefferud@metc.state.mn.us)