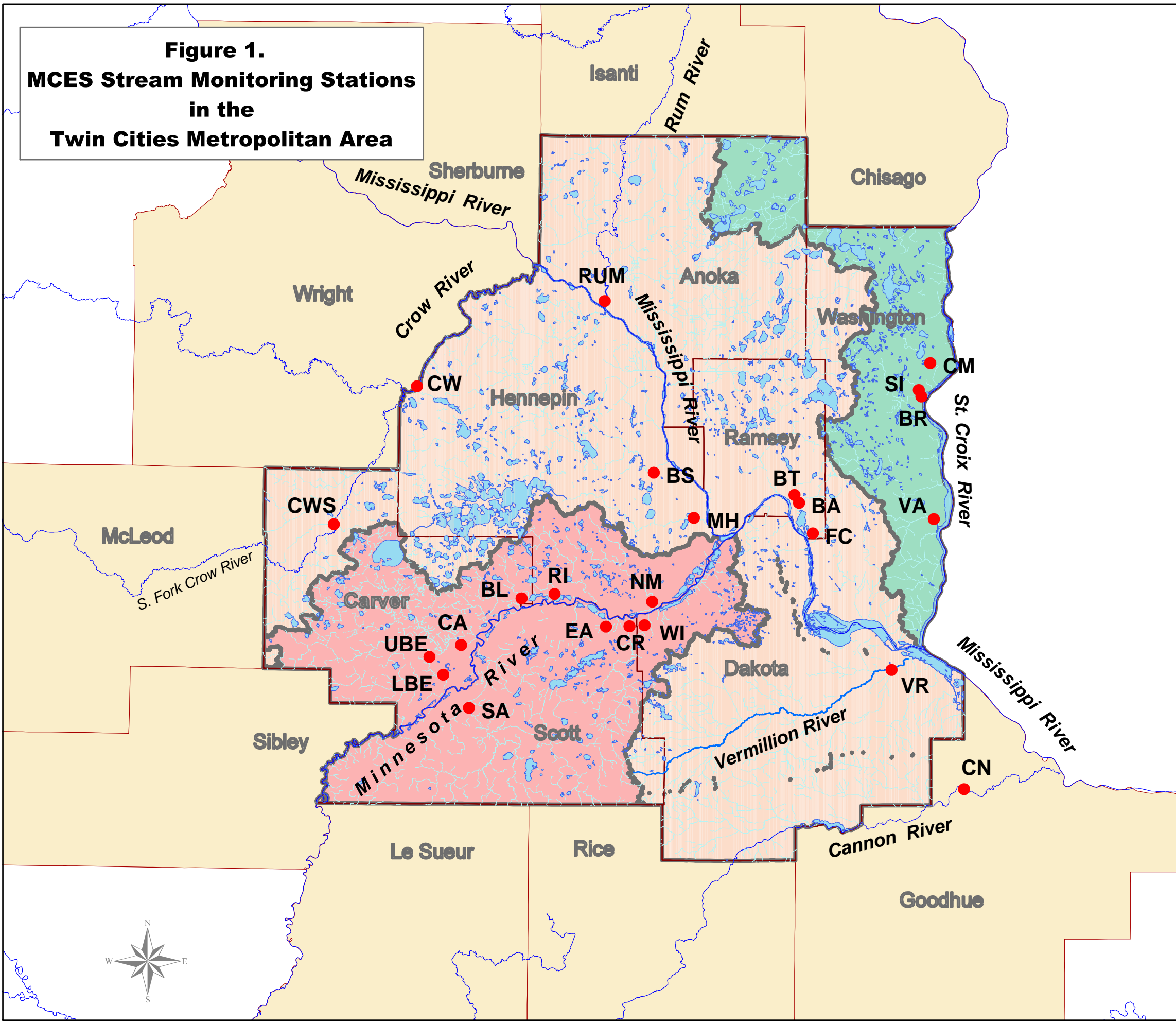


**Figure 1.  
MCES Stream Monitoring Stations  
in the  
Twin Cities Metropolitan Area**



**Map Key**

**Major River Basins**

- Mississippi
- Minnesota
- St. Croix
- Lakes
- Stream Monitoring Sites
- Rivers



**Monitoring Site Lookup Table**

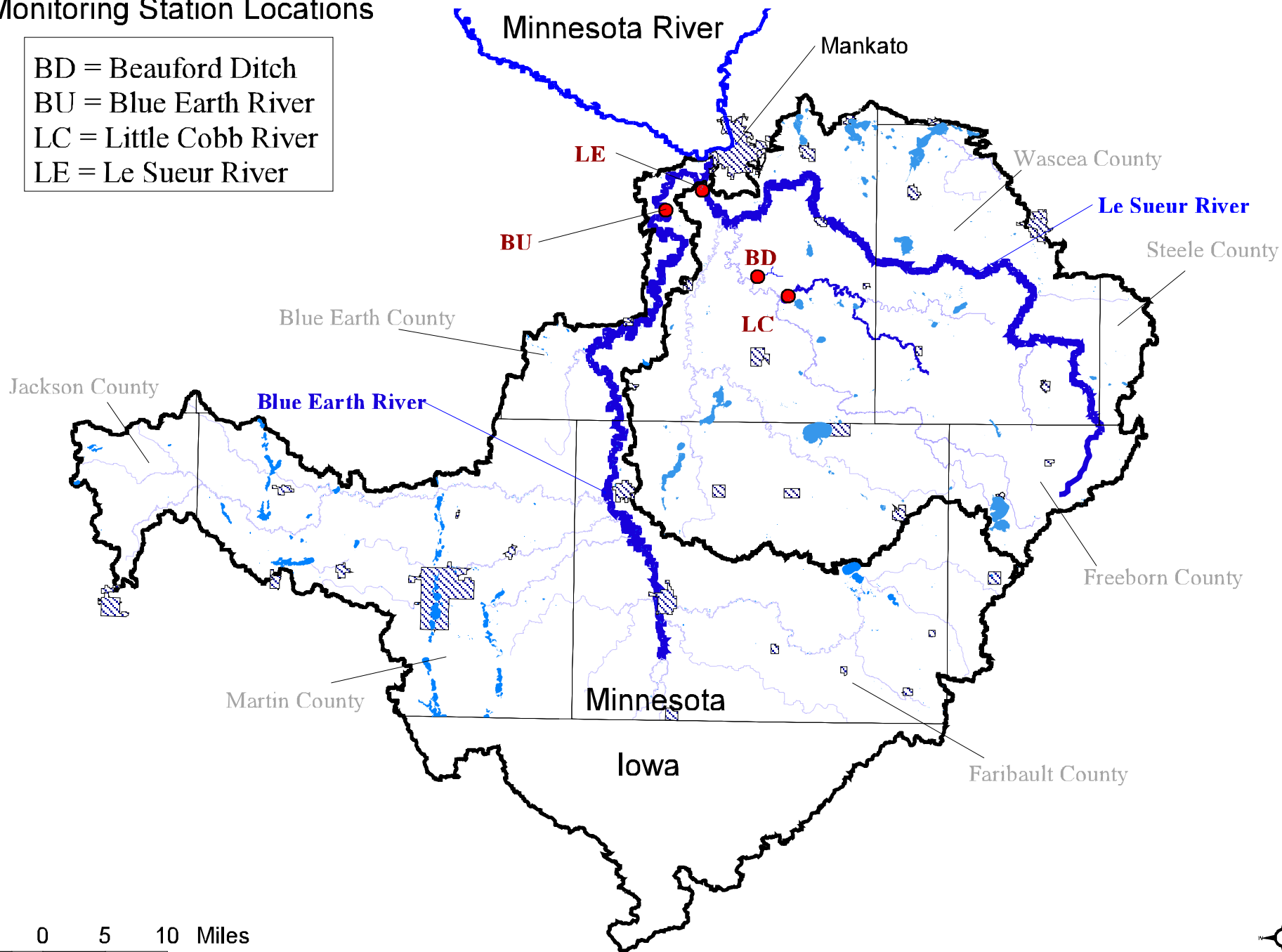
SITE ID	SITE NAME
BA	Battle Creek
BL	Bluff Creek
BR	Browns Creek
BS	Bassett Creek
BT	Beltline Interceptor
CA	Carver Creek
CM	Carnelian-Marine Outlet
CN	Cannon River
CR	Credit River
CW	Crow River
CWS	Crow River South Fork
EA	Eagle Creek
FC	Fish Creek
LBE	Bevens Creek, Lower
MH	Minnehaha Creek
NM	Nine Mile Creek
RI	Riley Creek
RUM	Rum River
SA	Sand Creek
SI	Silver Creek
UBE	Bevens Creek, Upper
VA	Valley Creek
VR	Vermillion River
WI	Willow Creek



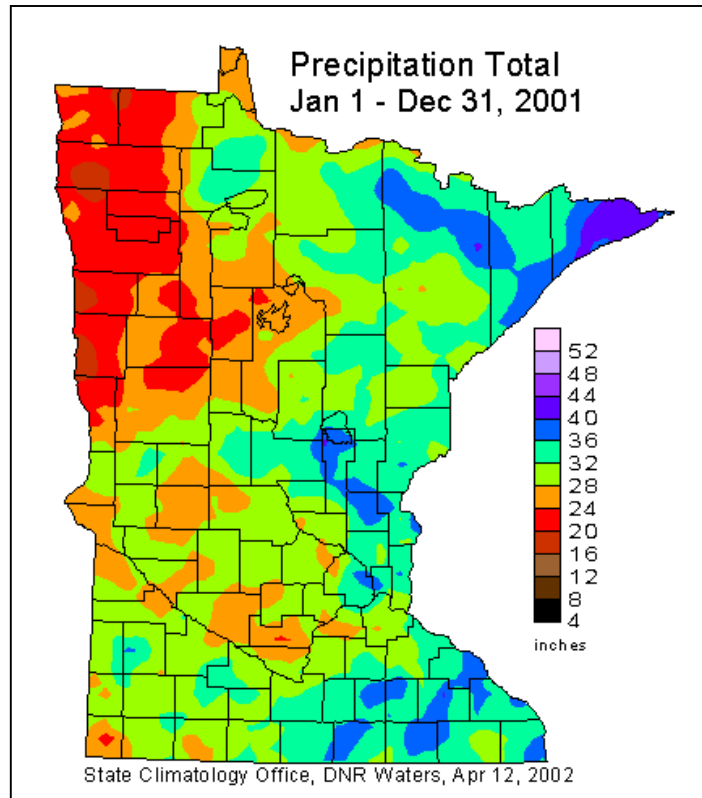
**Figure 2. MCES Stream Monitoring Stations Near Mankato, Minnesota**

**Monitoring Station Locations**

- BD = Beauford Ditch
- BU = Blue Earth River
- LC = Little Cobb River
- LE = Le Sueur River



**Figure 3. Minnesota 2001 Total Precipitation**



**Figure 4. Minnesota 2001 Precipitation Departure From Normal**

