

**Table 1.BL. Bluff Creek Monitoring Station Information**



**Station Address:** 781 Flying Cloud Drive, Chanhassen, MN  
**County:** Carver  
**Major Basin:** Minnesota River Basin  
**Watershed:** Bluff Creek  
**Drainage Area:** 8.9 square miles

**Station Operator:** Metropolitan Council Environmental Services

**Metropolitan Council Environmental Services Contact Information:**

**Contact Person:** Tim Pattock or Mike Ahlf  
**Address:** 2400 Childs Road  
St. Paul, MN 55106  
**Phone:** 651-602-8084 (Tim) or 651-602-8082 (Mike)  
**E-mail:** timothy.pattock@metc.state.mn.us  
mike.ahlf@metc.state.mn.us

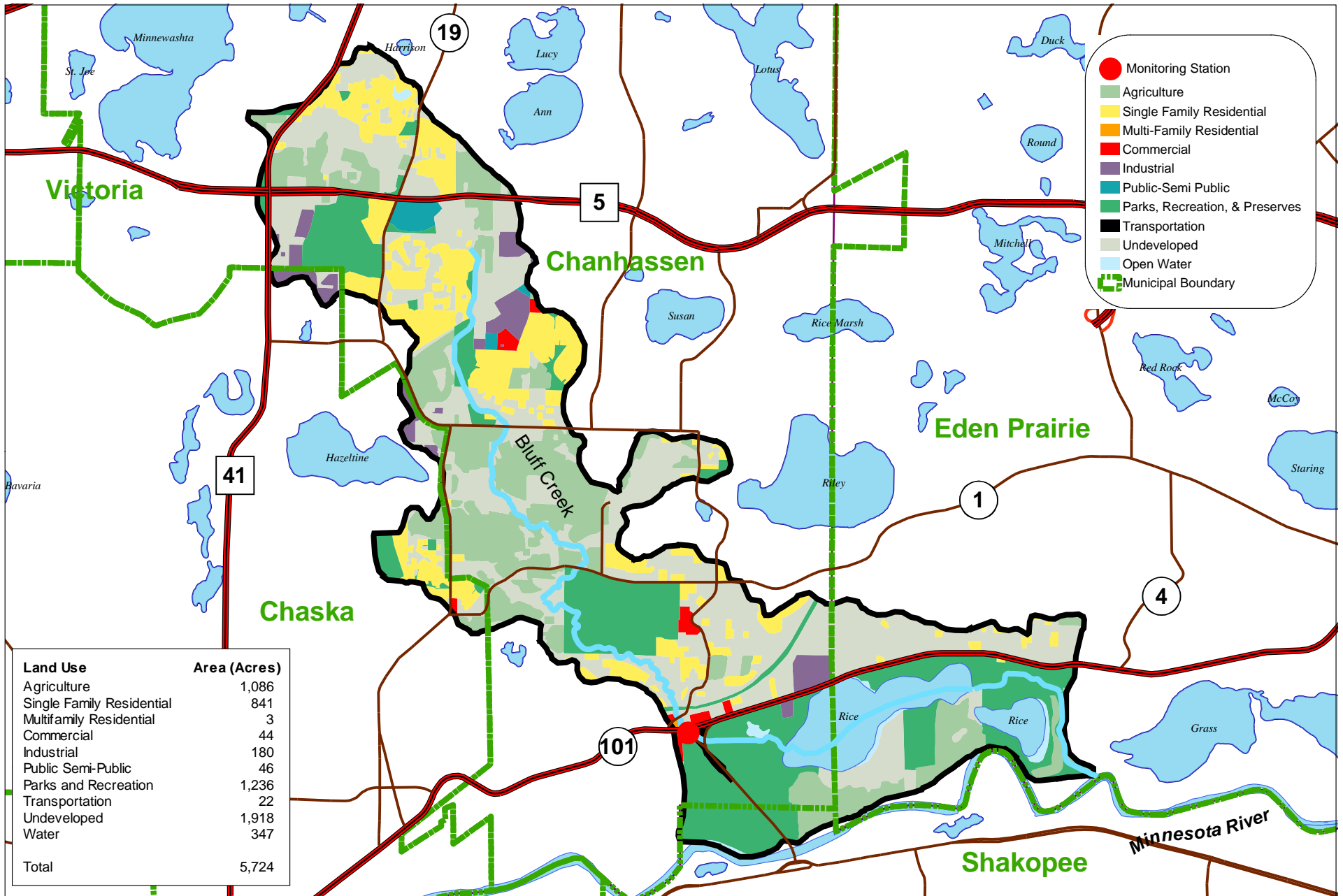
**Watershed District or Watershed Management Organization:**  
Riley-Purgatory-Bluff Creek Watershed District

**Station Overview:** MCES has conducted water quality monitoring of Bluff Creek since 1990. The monitoring station is located in Chanhassen, Minnesota, 3.5 miles upstream from the creek confluence with the Minnesota River. MCES staff maintain the rating curve at this station. High water conditions in Bluff Creek during the spring of 2001 deposited large amounts of gravel in the stream channel near the monitoring site, rendering the monitoring equipment useless and dramatically changing the rating curve.

As a result, very little monitoring data are available for 2001, and 2001 data for the station are not be included in this report. Repairs were made to the monitoring station in late 2001 and the rating curve was re-established, so that the Bluff Creek monitoring station was again functional in 2002. During the 1989-1990 period, MCES also operated a second monitoring station on Bluff Creek near the creek confluence with the Minnesota River (Mile 0.2).

**For additional stream monitoring information and monitoring methods regarding this site, see [www.metrocouncil.org/environment/RiversLakes](http://www.metrocouncil.org/environment/RiversLakes).**

**Figure 1.BL. Bluff Creek Monitoring Station Location and Watershed Characteristics**



0 0.3 0.6 1.2 Miles



**Table 4.BL. Bluff Creek 2001 Macroinvertebrate Monitoring Results and Metrics**

**Monitoring Date 06/06/01**

<b>Class</b>	<b>Order</b>	<b>Family</b>	<b>Common Name</b>	<b>Life Stage</b>	<b>Organism Count</b>
Crustacea	Amphipoda		Scuds		9
Insecta	Coleoptera	Chrysomelidae	Aquatic Leaf Beetles	Larvae	1
Insecta	Coleoptera	Curculionidae	Water Weevils	Adult	1
Insecta	Coleoptera	Dryopidae	Longtoed Water Beetles	Adult	2
Insecta	Coleoptera	Dytiscidae	Predaceous Diving Beetles	Larvae	9
Insecta	Diptera	Chironomidae	Midges	Larvae	4
Insecta	Diptera	Simuliidae	Black Flies	Larvae	10
Insecta	Ephemeroptera	Baetidae	Small Minnow Mayflies	Larvae	72
Insecta	Ephemeroptera	Leptophlebiidae	Pronggills	Larvae	1

**Macroinvertebrate Taxa Metrics**

Total Taxa	9
EPT Taxa	2
% EPT Taxa	22
Diptera Taxa	2
% Diptera Taxa	22
Mean Tolerance Value	4.50

**Macroinvertebrate Organism Metrics**

Total Organisms	109
EPT Individuals	73
% EPT Individuals	67
Diptera Individuals	14
% Diptera Individuals	13
Chironomidae Individuals	4
% Chironomidae Individuals	4

**Water Quality**

**Degree of Organic Pollution**

<b>Hilsenhoff Biotic Index</b>	4.33	Very Good	Possible slight organic pollution
--------------------------------	------	-----------	-----------------------------------