



Transit Oriented Development Update

**Transportation Committee Meeting
December 7, 2015**

Lucy Galbraith, AICP,
Director, Transit Oriented Development

- **Maximize the development impact of transit investments**
 - *Community building*
- **Support regional economic competitiveness**
 - *More customers & employees connected to employment centers*
- **Advance equity**
 - *Affordable housing & good jobs in TODs*
- **Support a 21st century transportation system**
 - *Increase ridership & revenues*



*Blue Line TOD @ 46th Street
Served by Bus Routes
7, 9, 46, 74, 84, 436, 446*



- **Prioritize Resources**
- **Focus on Implementation**
- **Effective Communication**
- **Collaborate with Partners**
- **Coordinate Internally**



NorthStar TOD @ Ramsey Station



○ **Prioritize Resources**

- Existing transitways: Create TOD on Council-owned land
- Future transitways: Joint Development in LRT projects

Started

In progress

○ **Focus on Implementation**

- Public property mapping project
- Share technical resources & expertise on TOD topics

Online in January 2016

Ongoing

○ **Effective Communication**

- Quarterly forums
- Participation in regional TOD activities

3 Forums + MNAPA session

Ongoing

○ **Collaborate with Partners**

- Work with partner jurisdictions on specific projects
- TOD Peer Exchange group

Ongoing

Ongoing

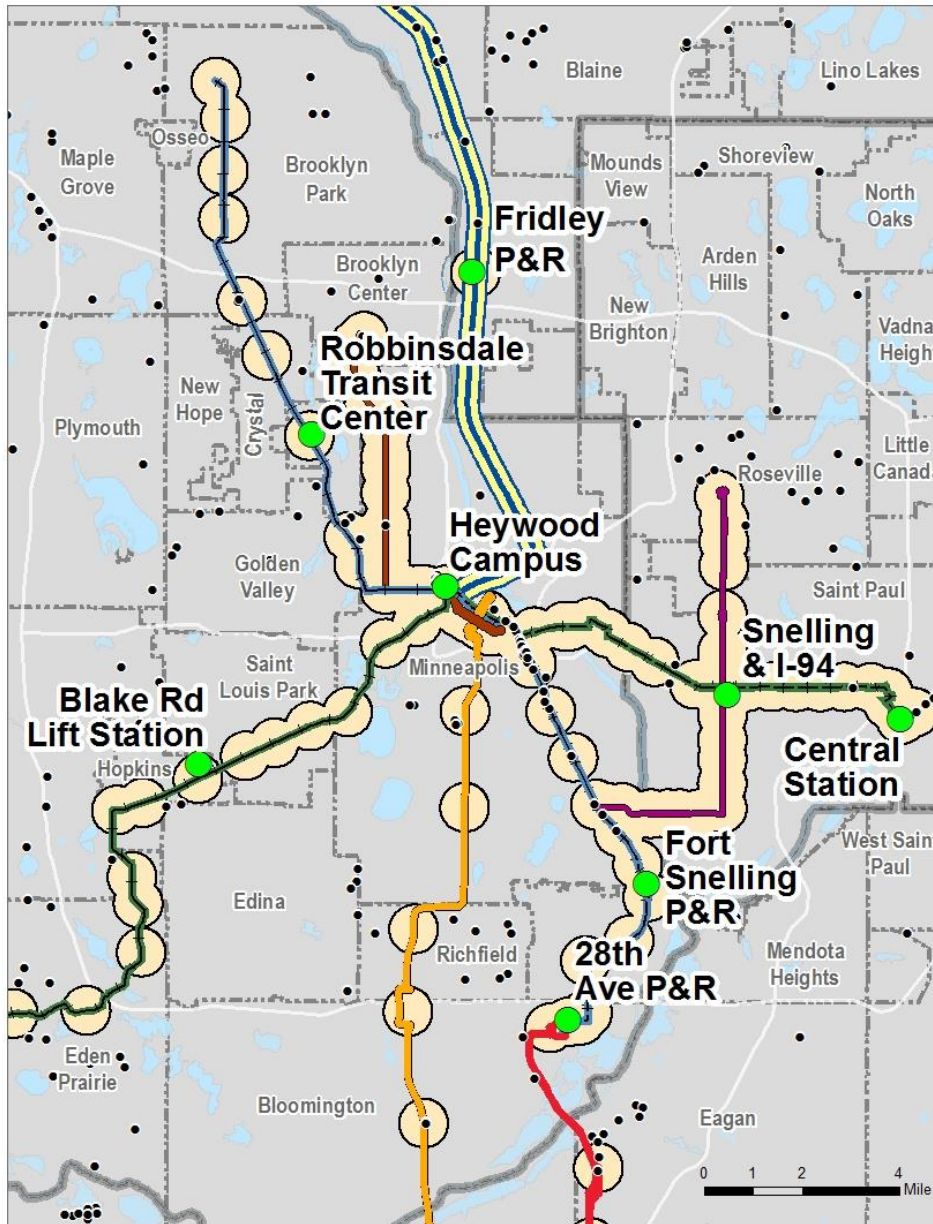
○ **Coordinate Internally**

- Monthly Council staff working group
- Project Office coordination

Ongoing

Ongoing

Strategy 1: TOD on Council-owned land



- Met Council-Owned Parcels
- Sites for Further Analysis

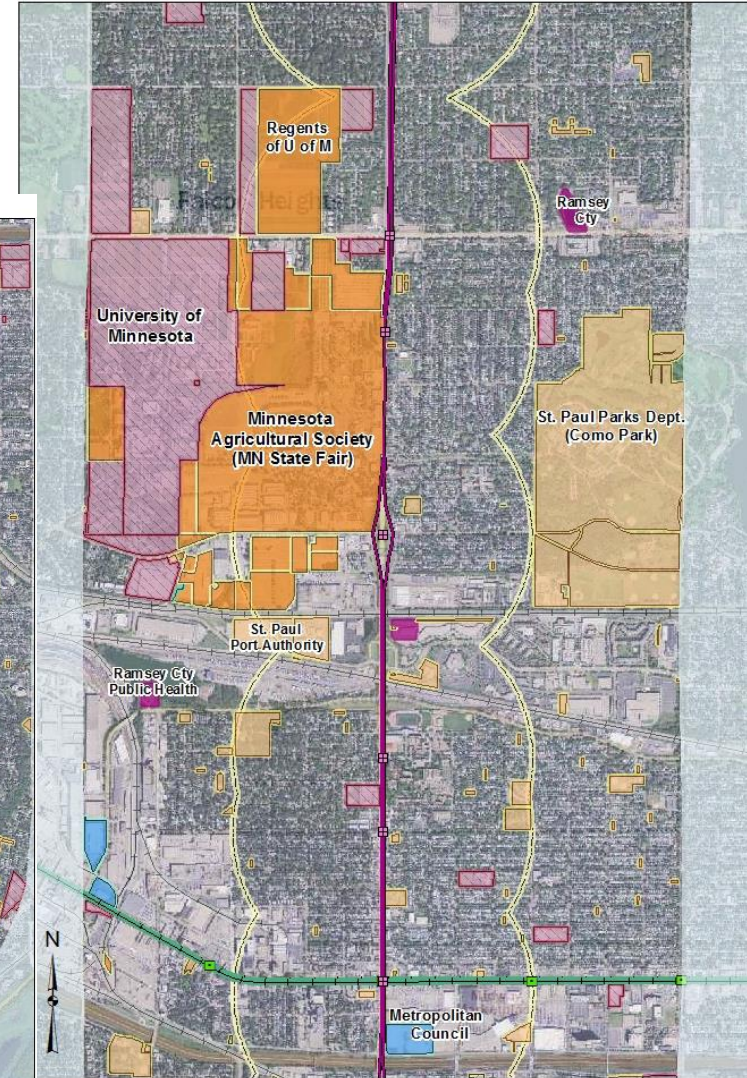
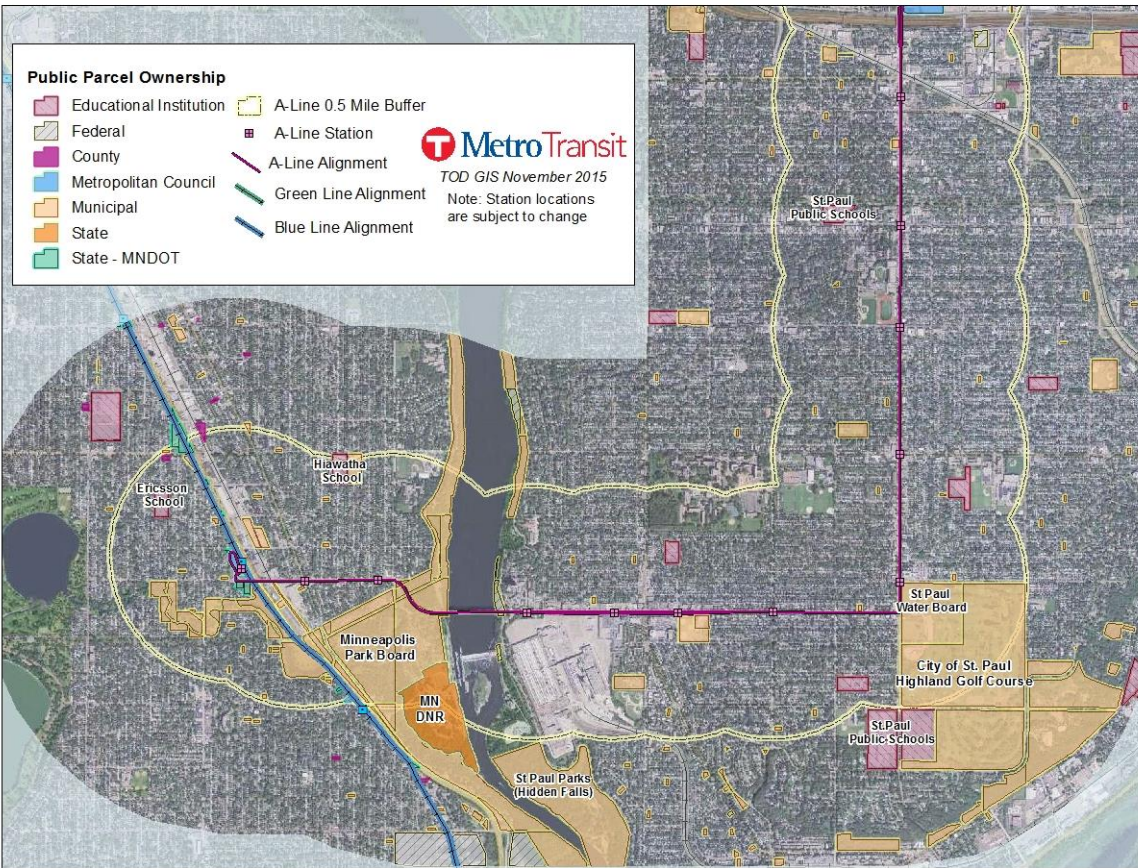
Transitways

- METRO Blue Line/ Extension
- METRO Green Line/ Extension
- METRO Red Line
- METRO Orange Line
- Northstar Line
- A Line BRT
- C Line BRT

— Half Mile Station Area

TOD GIS November 2015

Example: A Line public property maps



- Regional TOD Retreat—Goals, priorities, challenges
 - Biggest barriers: Government systems, silos, policies
 - Public funding priorities: Transit & Placemaking
- Equitable TOD in action—Midtown Exchange
 - Committed partners
 - Funding support
 - Community support
- Jobs & TOD on the A Line
 - BRT value depends on transit quality and corridor identity
 - A Line connects key stakeholders for economic development
 - Corridor group follow-up meeting to plan A Line launch

- Move at least 2 properties into development
- Broaden exploration of JD opportunities along transitways
- Contribute to regional TOD capacity:
 - FTA Gold Line planning grant
 - Childcare Study
 - District parking study
- Continue to strengthen regional TOD community
 - Collaboration internally and externally
 - Stakeholder events on particular topics
- Improve website, expand resources for regional TOD

Advance TOD in all communities, all scales, all transit modes, with aligned Met Council resources.



Questions?

metrotransit.org/tod